

- Well Symbol Legend**
- Oil
 - Abandoned Oil
 - Oil & Gas
 - Aband. Oil & Gas
 - Gas
 - Abandoned Gas
 - Dry Hole
 - Surface Location
 - Location/Permit
 - SWD

- PRODUCING FORMATION LEGEND**
- Hoxbar
 - Morrow
 - Springer
 - Mississippian
 - Woodford
- Allocation %**

△ Type Log in Sec 18-7N-6W

All Well & Production Data is taken from IHS Energy
And is current as of February 2020 as well as forms
1002A, 1003 and 1073 scanned by OCC Imaging

Continental Resources

CD 202000363 ID
Section 32-7N-6W
Increased Density
Mississippi Lime
Grady County, Oklahoma
Production Map

Date: Feb 2020 Author: W.S. Boyd

Data Sheet

Township, Range, Section		Quarter Section	API No.	Operator	Well Name	Total Depth	Completion Date	ProdZoneName	Cum BO	Cum MCFG	Status
6N 6W 4		SW SE SE	3505123920000	CONTINENTAL	STANDRIDGE SS 1-4H	18,548	8/31/2015	SPRINGER	284,279	981,809	OIL
6N 6W 5		NW NE NE	35051239370000	CONTINENTAL	CHESTER 1-32H	18,425	6/20/2015	SPRINGER	392,429	1,061,192	OIL
6N 6W 5		SW SW SE	35051237640000	CONTINENTAL	CUNNINGHAM 1-5H	19,114	5/23/2014	WOODFORD	83,298	3,603,573	GAS
6N 6W 6		SW SW SW	35051228660000	CONTINENTAL	LOWE 2-6	13,527	6/14/2000	SPRG	91,882	3,749,975	GAS
6N 6W 6		N2 SW SW	35051225500000	STRAT LAND	LOWE 1-6	8,260	1/11/1996	HOXBAR		97,592	ABD-GW
6N 6W 6		NWNWSESW	35051205330000	TREPCO	MISER 1-6	13,450	8/3/1976	SPRINGER	182,417	6,227,651	ABD-GW
6N 6W 7		NW NW NW	35051225640100	ARVINE	MCNEILL 1-A7	13,447	10/25/2000	MRRW-SPRG	519	24,818	ABD-GW
6N 6W 7		SWSWSWSW	35051240270000	CONTINENTAL	PUDGE 1-7-6XH	23,485	9/17/2016	MSSP-WDFD	45,365	4,645,635	GAS
6N 6W 7		E2 W2 NE	35051205130000	TREPCO	BRATTON UN 1	13,380	5/4/1976	SPRINGER	207,967	10,790,762	ABD-GW
6N 6W 8		C W2	35051206130000	KAISER-FRANCIS	MCNEIL 1	13,184	5/4/1977	SPRINGER	57,799	5,869,383	GAS
6N 6W 9		NW NE NW	35051236230000	CONTINENTAL	GILL 1-4H	17,922	2/27/2013	WOODFORD	59,611	1,544,191	GAS
6N 6W 9		SE SW SE	35051237150000	CONTINENTAL	SPRAY 1-9H	18,915	1/22/2014	WOODFORD	75,743	1,686,541	OIL
7N 6W 19		NE NE NE	35051239190000	CONTINENTAL	BUSER 1-19-30XH	23,649	6/15/2015	WOODFORD	159,306	8,270,107	GAS
7N 6W 28		SE SW SW	35051237240000	CONTINENTAL	RILEY 1-28H	18,033	12/16/2013	WOODFORD	79,302	2,164,188	OIL
7N 6W 29		SW SW SE	35051235280000	CONTINENTAL	DANA 1-29H	18,545	9/20/2010	WOODFORD	46,389	2,013,662	GAS
7N 6W 29		NESESWSE	35051238390000	CONTINENTAL	HARTLEY 4-29H	17,576	1/26/2015	SPRINGER	129,874	640,785	OIL
7N 6W 29		SW SE SE	35051238770000	CONTINENTAL	HARTLEY 5-29H	17,814	1/17/2015	SPRINGER	217,329	638,571	OIL
7N 6W 31		SE SE SE	35051237230000	CONTINENTAL	KATHRYN 1-31H	19,710	2/25/2014	WOODFORD	17,965	487,828	GAS
7N 6W 31		NESENWSW	35051245520000	CONTINENTAL	KATHRYN 2-31-6XHS	21,190	7/11/2019	SPRINGER	70,605	158,575	OIL
7N 6W 31		NE	35051245790000	CONTINENTAL	KATHRYN 3-31-6XHS	22,449	7/15/2019	SPRINGER / GODDARD	72,222	174,591	OIL
7N 6W 31		SENESENE	35051245670000	CONTINENTAL	KATHRYN 4-31-6XHS	22,702	7/14/2019	SPRINGER / GODDARD	104,414	232,775	OIL
7N 6W 31		SW	35051245510000	CONTINENTAL	PHELPS 1-31-30-19XHS	27,644	9/6/2019	SPRINGER	67,673	272,532	OIL
7N 6W 31		SENWSWNE	35051245780000	CONTINENTAL	PHELPS 2-31-30-19XHS	25,785	7/26/2019	SPRINGER	97,137	354,514	OIL
7N 6W 31		NENESENE	35051245680000	CONTINENTAL	PHELPS 3-31-30-19XHS	25,339	8/3/2019	SPRINGER	89,876	320,634	OIL
7N 6W 31		C SW SW	35051205710000	COTTON PET	VOGEL 1	13,200	3/18/1977	SPRINGER	2,921	116,620	ABD-GW
7N 6W 32		NWNWENW	35051245390000	CONTINENTAL	CHESTER 2-32-5XHS	23,505	6/19/2019	SPRINGER	121,349	400,313	OIL
7N 6W 32		SENWNE	35051245360000	CONTINENTAL	CHESTER 3-32-5XHS	22,830	6/17/2019	SPRINGER	119,705	364,493	GAS
7N 6W 32		NW NW NW	35051238530000	CONTINENTAL	HARTLEY 1-29H	18,350	1/26/2015	SPRINGER	291,403	972,337	OIL
7N 6W 32		NW NW NE	35051238520000	CONTINENTAL	HARTLEY 3-29H	18,453	2/27/2015	SPRINGER	211,209	867,696	OIL
7N 6W 32		SW SW SE	35051235920000	CONTINENTAL	NUNN 1-32H	17,323	7/6/2012	WOODFORD	41,660	1,356,766	OIL

Data Sheet

OCC - Oklahoma Corporation Commission		Multi-Unit	CD 202000343	Location Exception	CD 202000360					
Verified to OCC 1002A, 1073, 1003 and IHS		Location Exception	CD 202000348	Multi-Unit	CD 202000361					
		Multi-Unit	CD 202000353	Location Exception	CD 202000362					
		Location Exception	CD 202000356	Increased Density	CD 202000363					
		Multi-Unit	CD 202000357	Increased Density	CD 202000364					
		Location Exception	CD 202000358	Increased Density	CD 202000365					
		Multi-Unit	CD 202000359	Increased Density	CD 202000366					
Township, Range, Section	Quarter Section	API No.	Operator	Well Name	Total Depth	Completion Date	ProdZoneName	Cum BO	Cum MCFG	Status
7N 6W 33	SE SE SE	35051238510000	CONTINENTAL	JANTZ FAMILY 1-33H	17,551	8/28/2015	SPRINGER	257,552	657,668	OIL
7N 6W 33	SWSWSWNW	35051245290000	CONTINENTAL	JANTZ FAMILY 2-33-4-9XHS	22,100	6/26/2019	SPRINGER	120,363	347,665	OIL
7N 6W 33	E2SESENW	35051245300000	CONTINENTAL	JANTZ FAMILY 3-33-4-9XHS	22,349	6/28/2019	SPRINGER	115,679	307,933	OIL
7N 6W 33	SW SW SE	35051236770000	CONTINENTAL	LUCKY PENNY 1-33H	18,530	7/21/2013	WOODFORD	85,458	1,833,287	OIL
7N 6W 33	NWSWSWNW	35051245270000	CONTINENTAL	NANCY J 2-33-28-21XHS	25,300	7/18/2019	SPRINGER	123,636	273,393	OIL
7N 6W 33	NESESENW	35051245260000	CONTINENTAL	NANCY J 3-33-28 21XHS	25,425	6/25/2019	SPRINGER	132,175	275,535	OIL
7N 6W 34	NW NW NW	35051238080000	CONTINENTAL	NANCY J 1-28H	17,938	9/17/2014	SPRINGER	287,976	829,885	OIL

CD 202000363 ID

35-051-21190

Andover Oil

Shipley 18-1

1320 FSL 1320 FWL/NE of 18-7N-6W

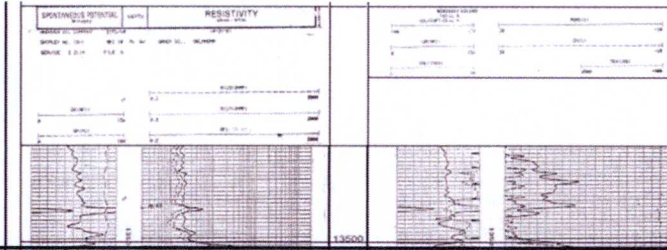
KB 1204

TVD Tops in
5-6N-6W 32-7N-6W

TVD Tops in
Shipley 18-1

14,135

13,935

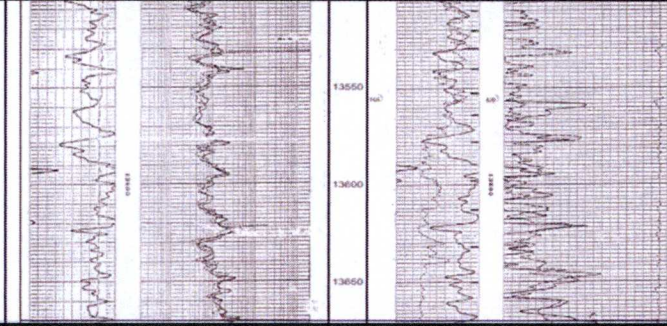


Mississippian

13,502

14,305

14,105

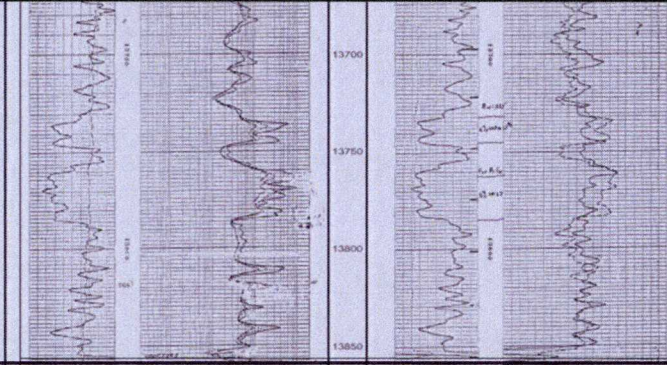


Mississippi Lime

13,670

14,490

14,290



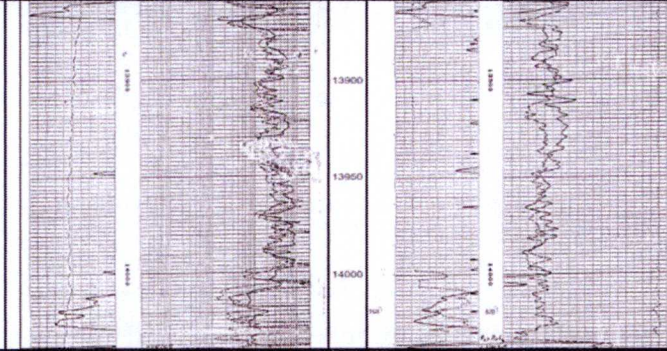
Woodford

13,856

Target
Interval

14,675

14,475



Hunton

14,038

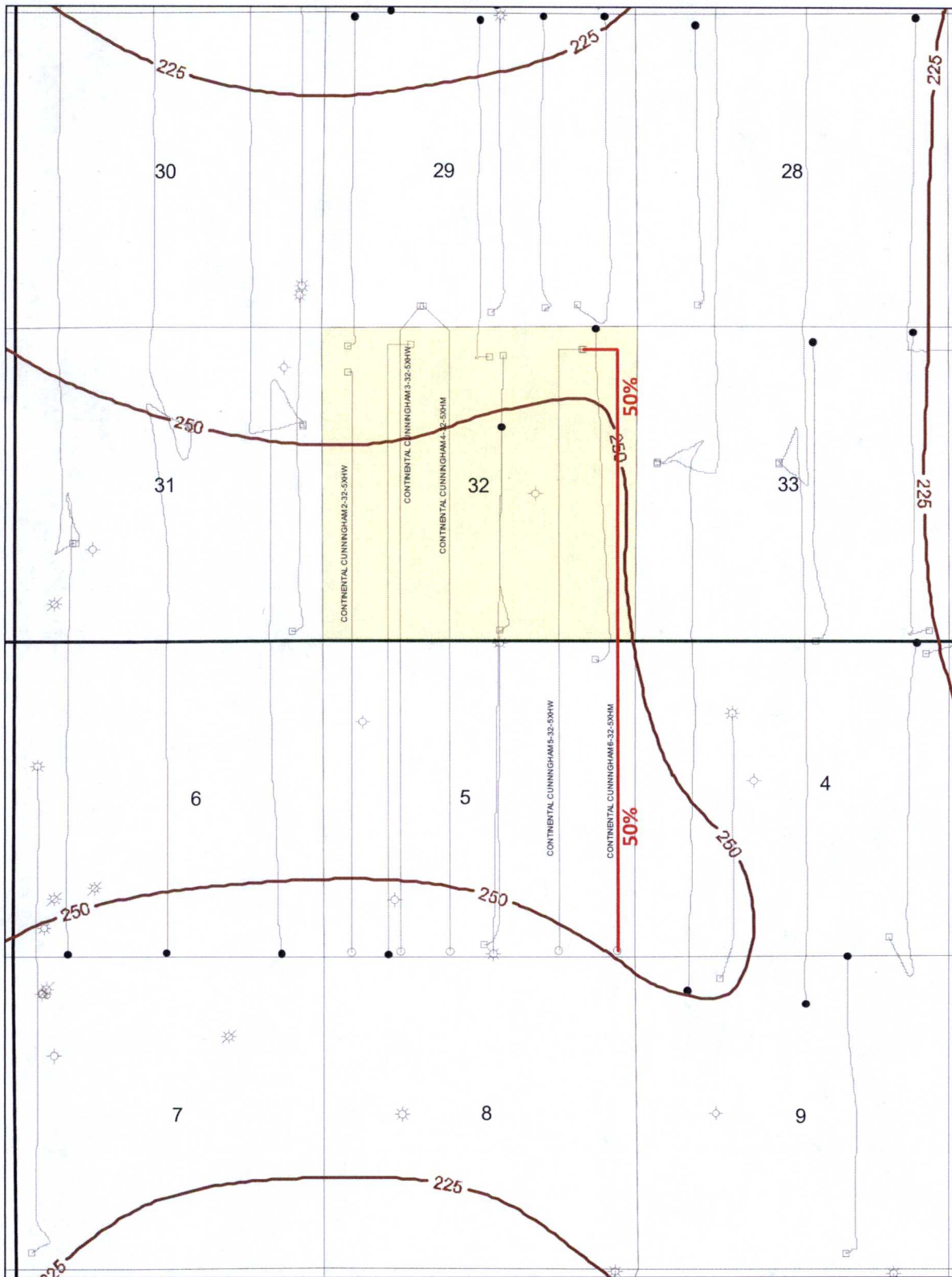


Continental Resources

CD 202000363 ID
Section 32-7N-6W
Increased Density
Mississippi Lime
Grady County Oklahoma
Type Log

Date: Feb 2020

Author: W.S. Boyd



T 7 N

T 6 N

1 inch = 2600 feet

1320 0 1320 2640 3960 ft

Well Symbol Legend

- Oil
- Abandoned Oil
- Oil & Gas
- Aband. Oil & Gas
- ☼ Gas
- ☼ Abandoned Gas
- Dry Hole
- Surface Location
- Location/Permit
- △ SWD

PRODUCING FORMATION LEGEND

- Hoxbar
- Morrow
- Springer
- Mississippian
- Woodford

Allocation %

Taken from a larger regional study

△ Type Log in Sec 18-7N-6W

All Well & Production Data is taken from IHS Energy And is current as of February 2020 as well as forms 1002A, 1003 and 1073 scanned by OCC imaging



Continental Resources

CD 202000363 ID

Section 32-7N-6W

Increased Density

Mississippi Lime

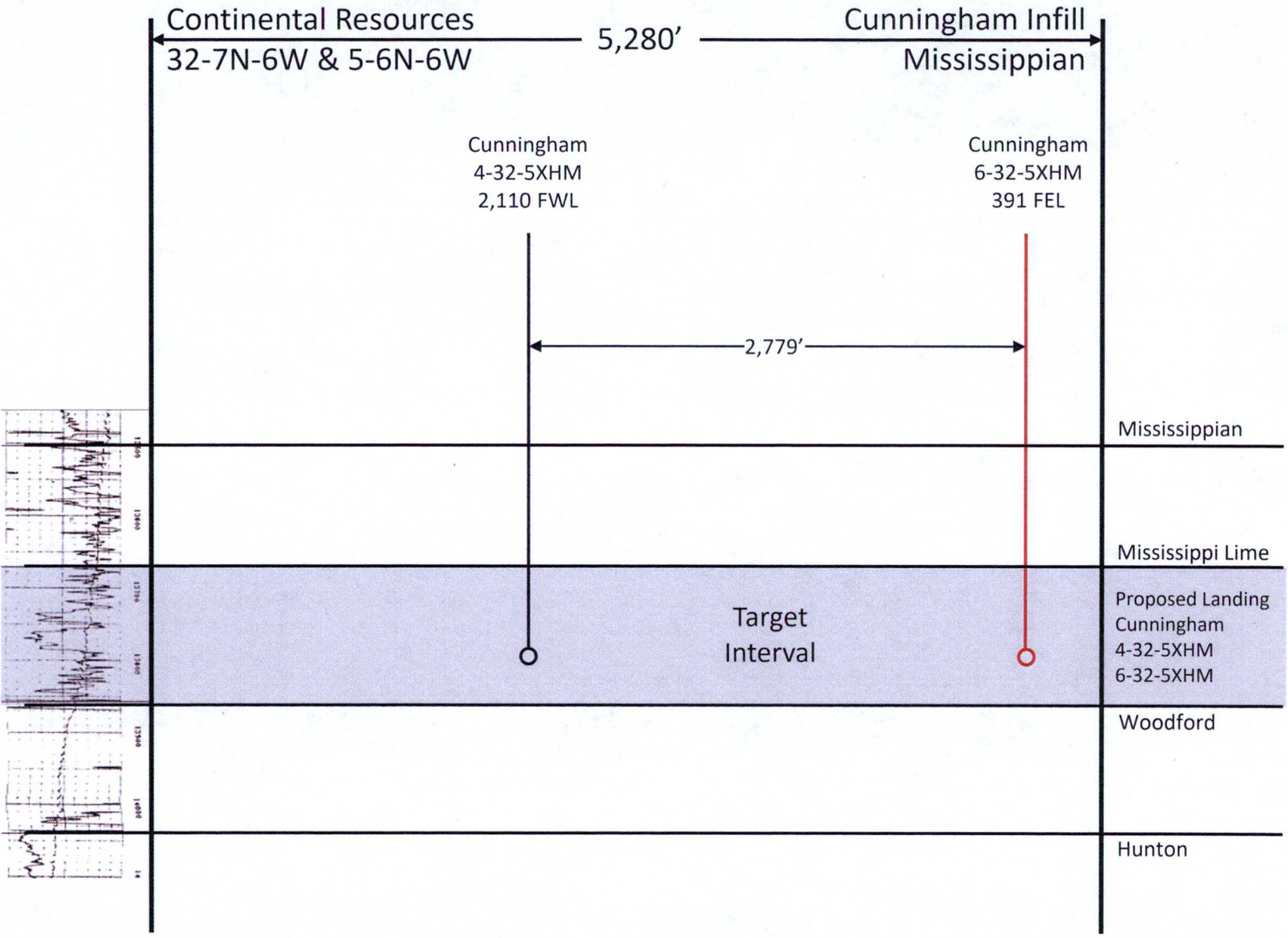
Grady County Oklahoma

Gross Isopach: Mississippian Target Interval

C.I. = 25'

Date: Feb 2020

Author: W.S. Boyd



Continental Resources

CD 202000363 ID
 Section 32-7N-6W
 Increased Density
 Mississippi Lime
 Grady County, Oklahoma
 Well Schematic

Date: Feb 2020
 Author: W.S. Boyd