

Data Sheet

OCC - Oklahoma Corporation Commission		Multi-Unit	CD 202001882							
Verified to OCC 1002A, 1073, 1003 and IHS		Location Exception	CD 202001883							
Township, Range, Section	Quarter Section	API No.	Operator	Well Name	Total Depth	Completion Date	ProdZoneName	Cum BO	Cum MCFG	Status
1N 1W 19	SW SW SW	35049250760000	CONTINENTAL	WARREN 1-30-29XH	17,502	8/24/2016	SYCAMORE	188,754	1,497,297	OIL
1N 1W 27	NENESENW	35049251670000	CONTINENTAL	WILEY 1-27-28XH	19,693	3/24/2018	SCMR-WDFD	222,294	1,041,209	OIL
1N 1W 32	CS2N2SE	35049212720000	PRI PROD	MORROW 1	16,123	10/7/1980	BROMIDE	1,362		ABD-OW
1S 1W 4	NE NE SE	35099202600000	DALE RAYMOND	SAMS 2	90	10/20/1978	ARBUCKLE			ABD-OW
1S 1W 4	SE SE NE	35099202370000	DALE RAYMOND	SHORT 1	90	8/30/1977	ARBUCKLE	2,747		ABD-OW
1S 1W 4	SE SE NE	35099202390000	MASTERS L C	JACOBS 1-A	647	11/1/1977	ARBUCKLE			OIL
1S 1W 4	NE NE SE	35099202150000	UNIVERSAL DRLG	SAM 1	93	7/16/1977	ARBUCKLE	1,849		ABD-OW

Proj. TVD Tops in
1N-1W

Sec 31

Sec 32

TVD Tops in
Morton 1-31

13,160

12,620

Sycamore

13,160

13,416

12,950

Woodford

13,416

Woodford
Target
Interval

13,640

13,175

Hunton

13,640

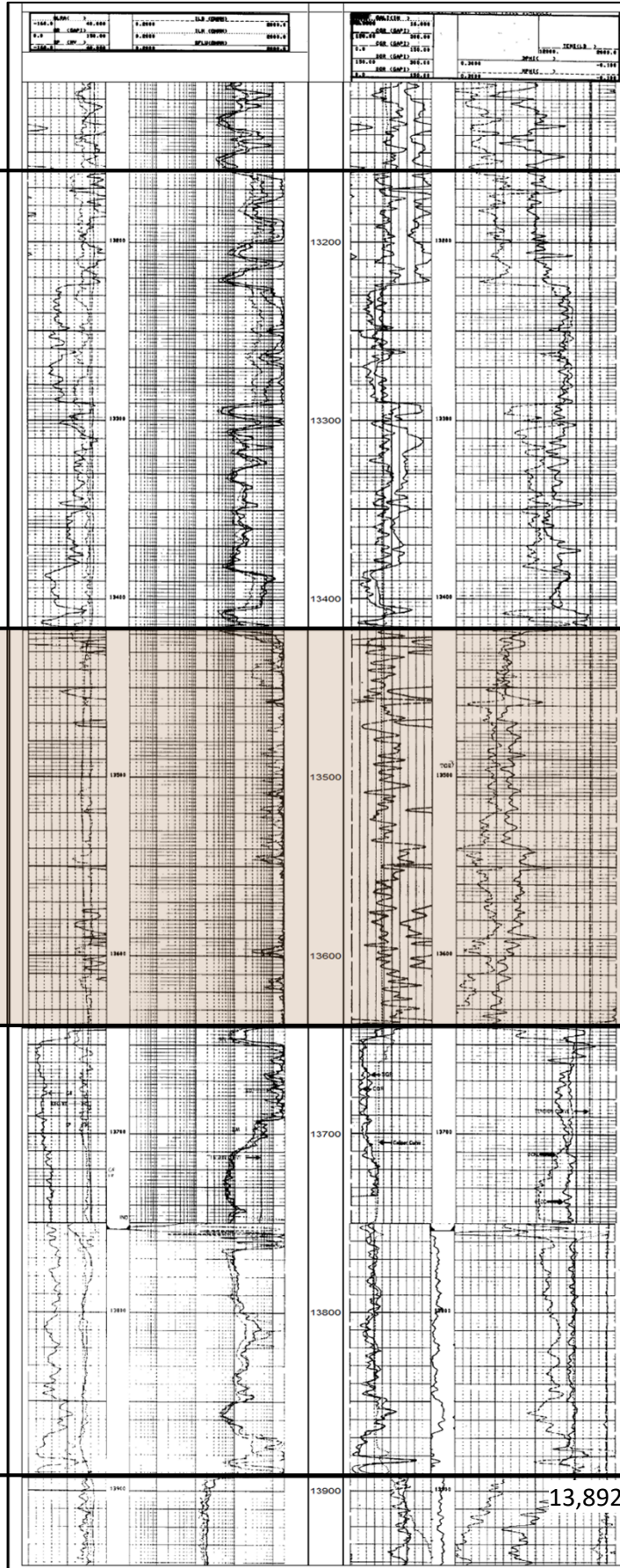
Base Hunton


13,892

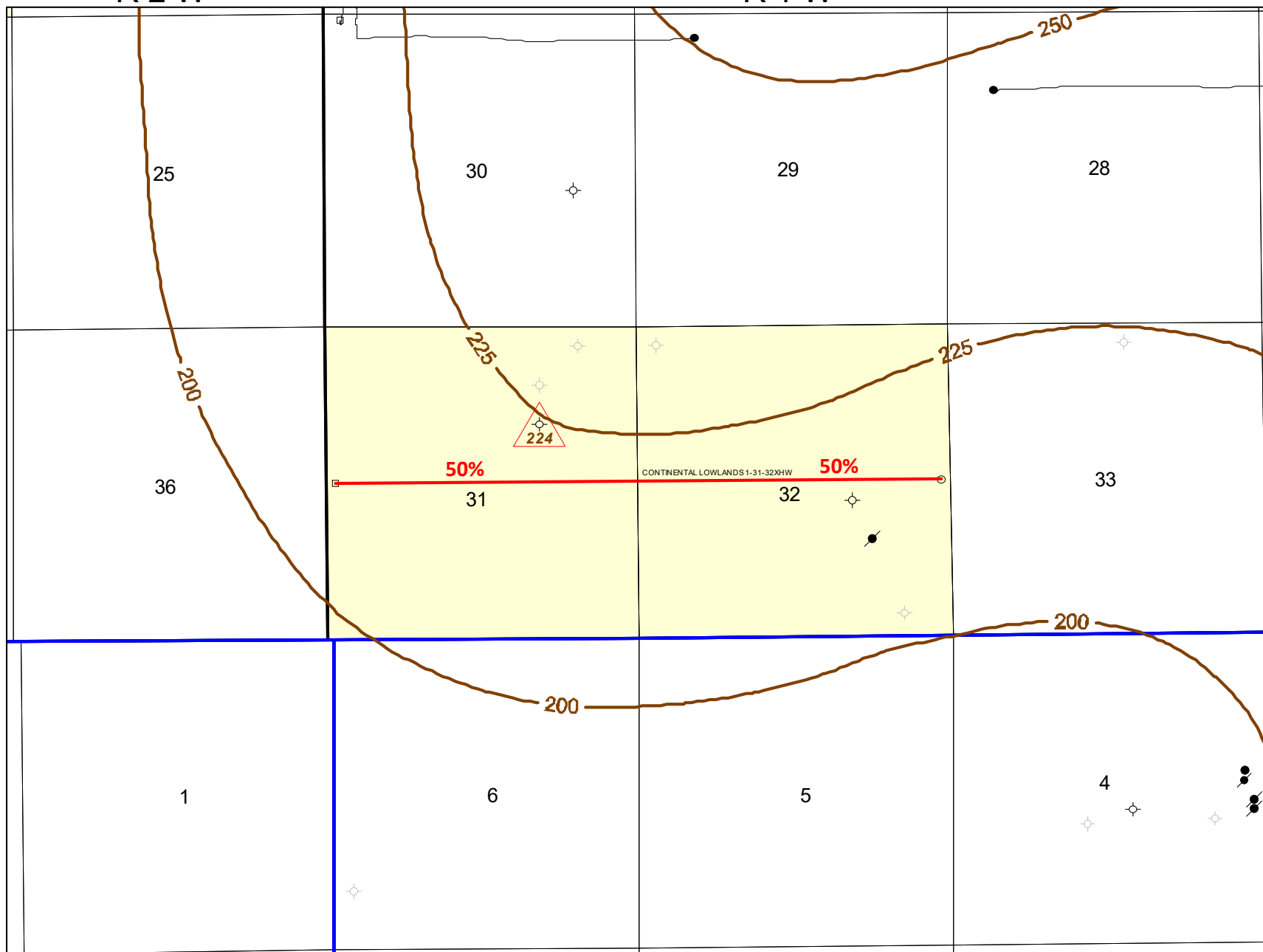
Sylvan

13,425

13,892



	Continental Resources
<p>CD 202001882 MU Lowlands 1-31-32XHW Multi-Unit Woodford Garvin County Oklahoma Type Log</p>	
Date: Nov 2020	Author: W.S. Boyd



T 1 N
T 1 S

Taken from a larger regional study

1 inch = 2600 feet

1320 0 1320 2640 3960 ft



Type Log

Lowlands 1-31-32XHW

Est TMD: 24,100'

Est LL: 10,200'

Only wells penetrating Miss Caney
And deeper/older have data posted.
Gray wells are not deep enough

All Well & Production Data is taken from IHS Energy
And is current as of October 2020 as well as forms
1002A, 1003 and 1073 scanned by OCC imaging

Allocation %

Well Symbol Legend

- Oil
- Abandoned Oil
- Oil & Gas
- Aband. Oil & Gas
- Gas
- Abandoned Gas
- Dry Hole
- Surface Location
- Location/Permit
- SWD



Continental Resources

CD 202001882 MU

**Lowlands 1-31-32XHW
Multi-Unit**

Woodford
Garvin County Oklahoma
Gross Isopach: Woodford

C.I. = 25'