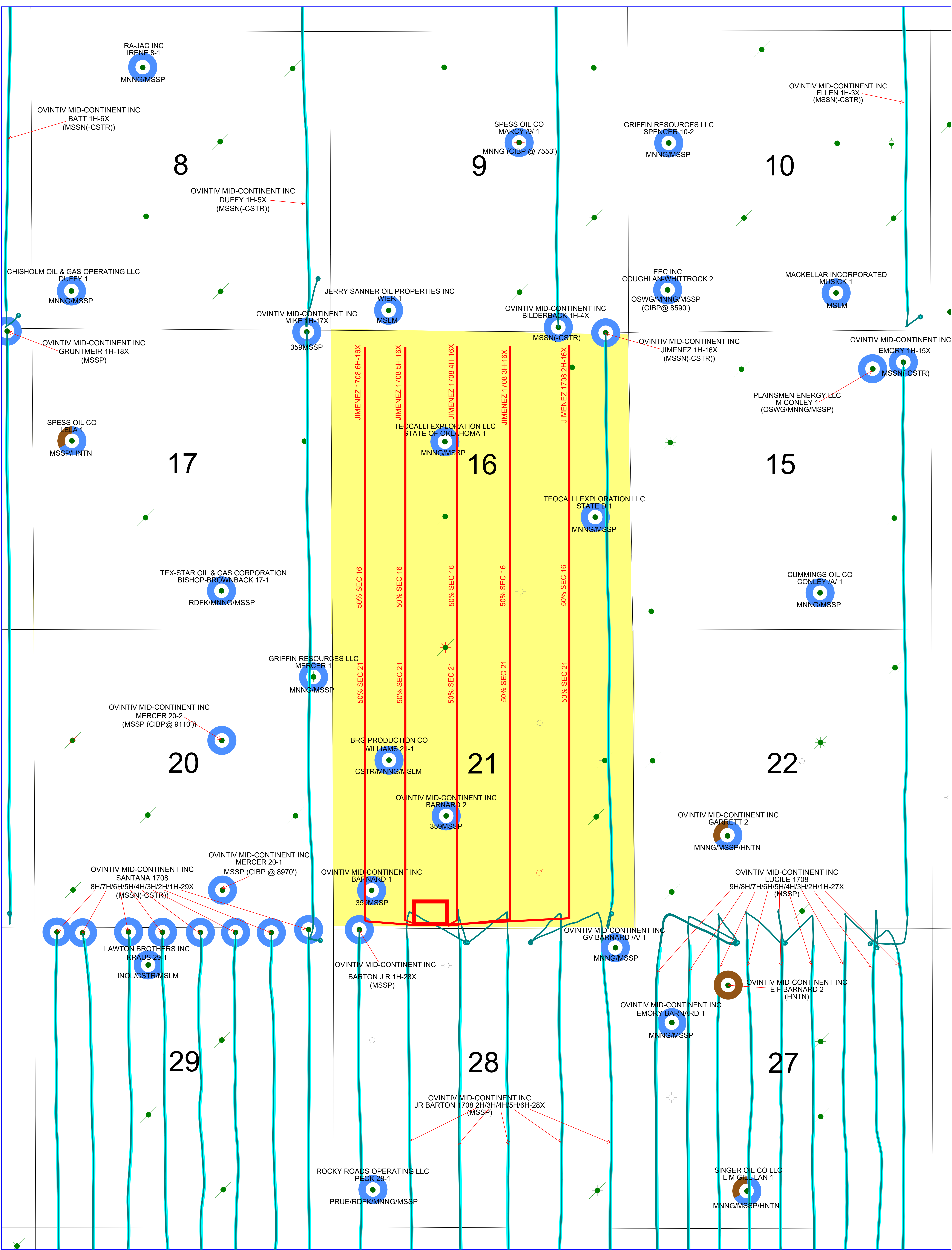
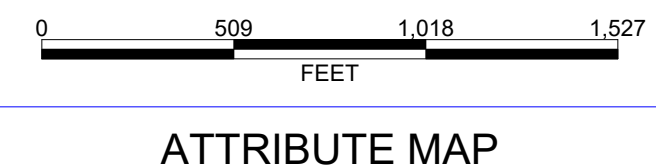


RECEIVED
By Amy Cummings at 2:07 pm, Feb 23, 2021



Jimenez 1708 Infill
16&21-17N-8W
Kingfisher County, OK



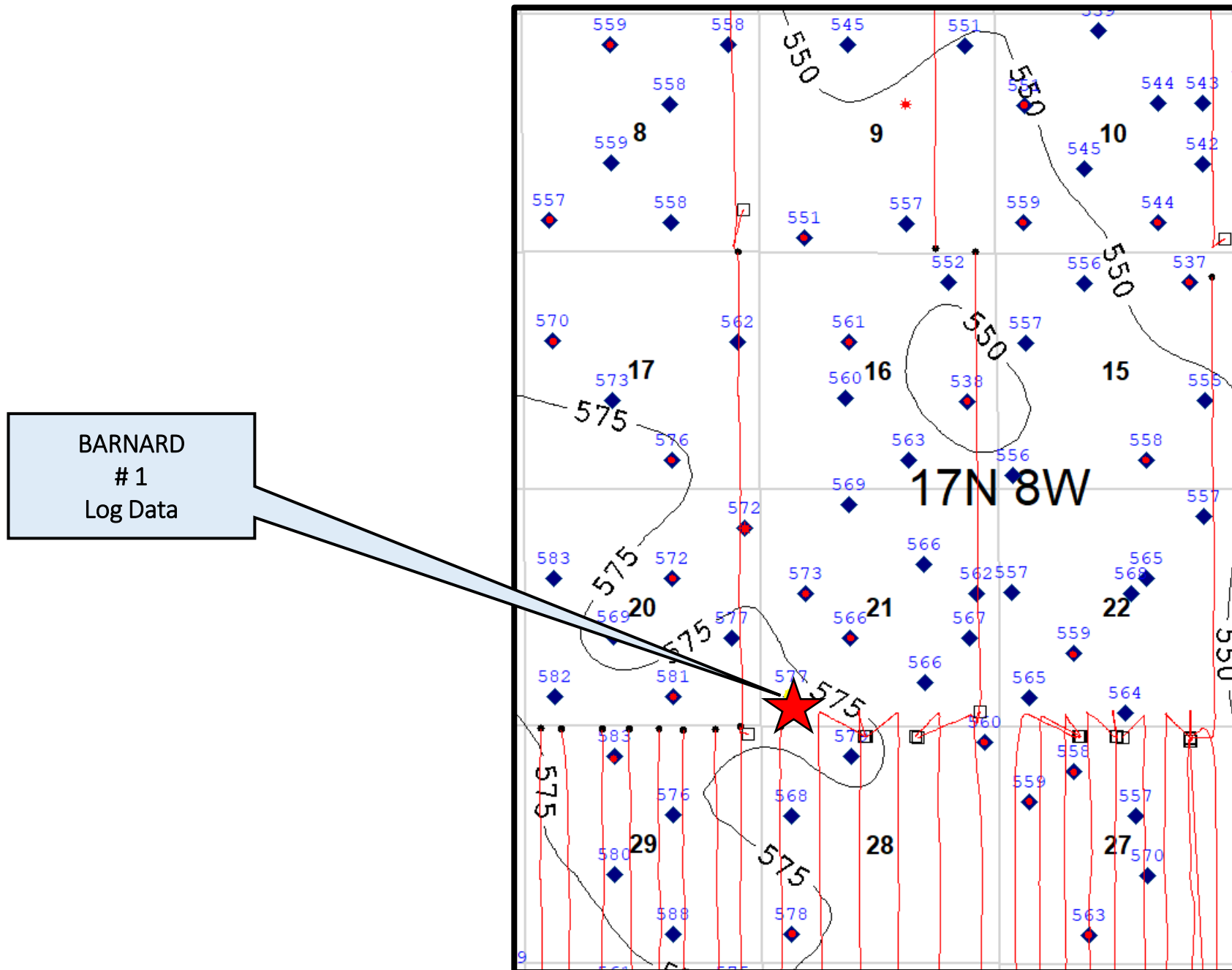
- ATTRIBUTE MAP
- Hunton Oil
 - Hunton Gas
 - Mississippian Oil
 - Mississippian Gas
 - Woodford Oil
 - Woodford Gas

- WELL SYMBOLS
- Abandoned Location - Permit
 - Abandoned Oil and Gas Well
 - Dry Hole, With Show of Gas
 - Dry Hole, With Show of Oil & Gas
 - Dry Hole
 - Gas Well
 - Oil & Gas Well
 - Oil Well
 - Plugged Gas Well
 - Plugged Oil Well
 - Producing

- 2021-0058
- 2021-0059
- 2021-0060
- 2021-0061
- 2021-0062
- 2021-0063
- 2021-0064
- 2021-0065
- 2021-0066
- 2021-0067
- 2021-0068
- 2021-0069
- 2021-0070

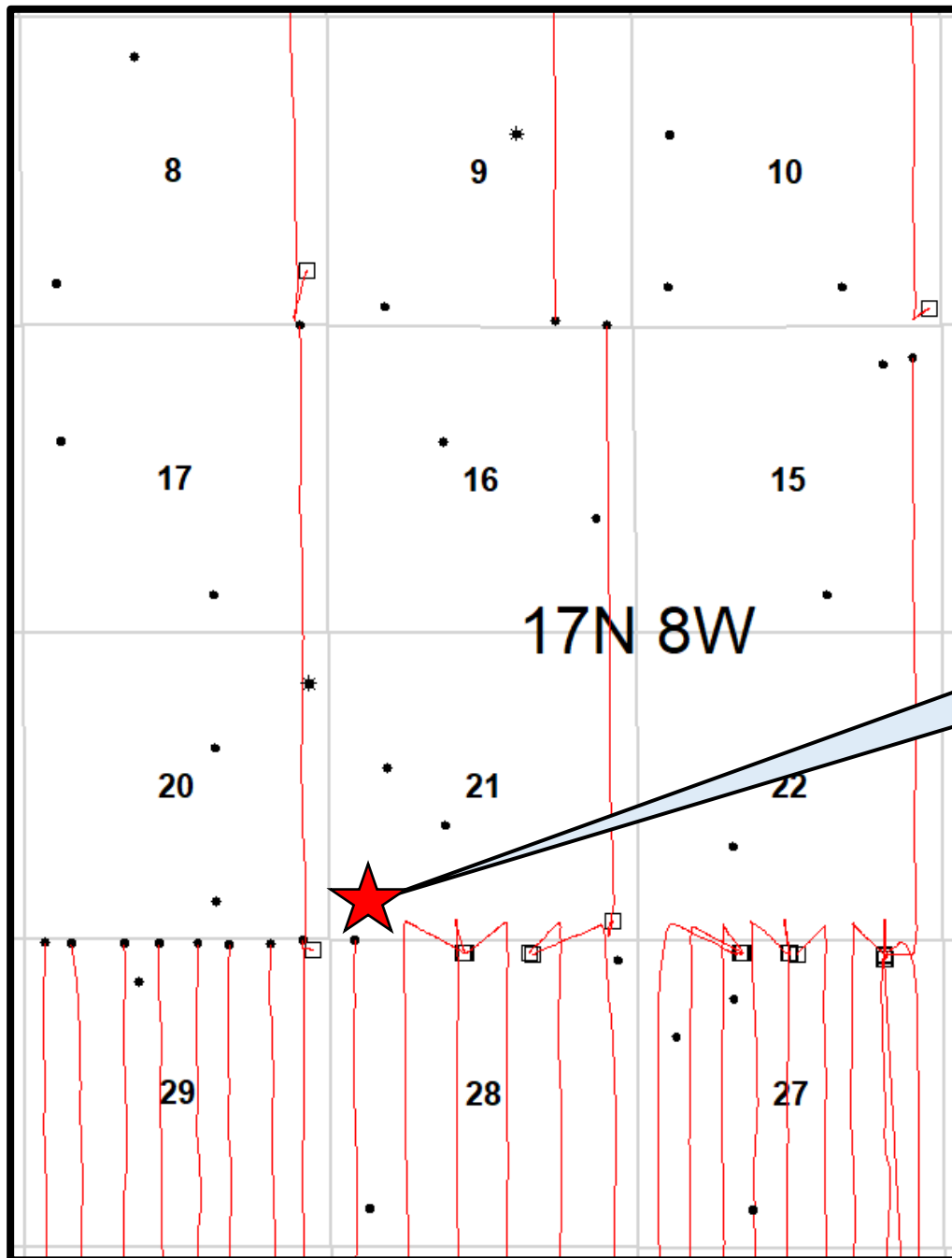
Mississippian (-CSTR) Isopach C.I.= 25'

Jimenez 1708 Infill

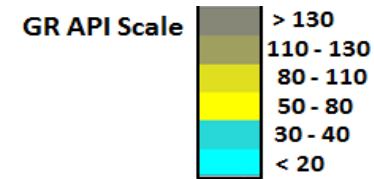


Mississippian (-CSTR)

Jimenez 1708 Infill



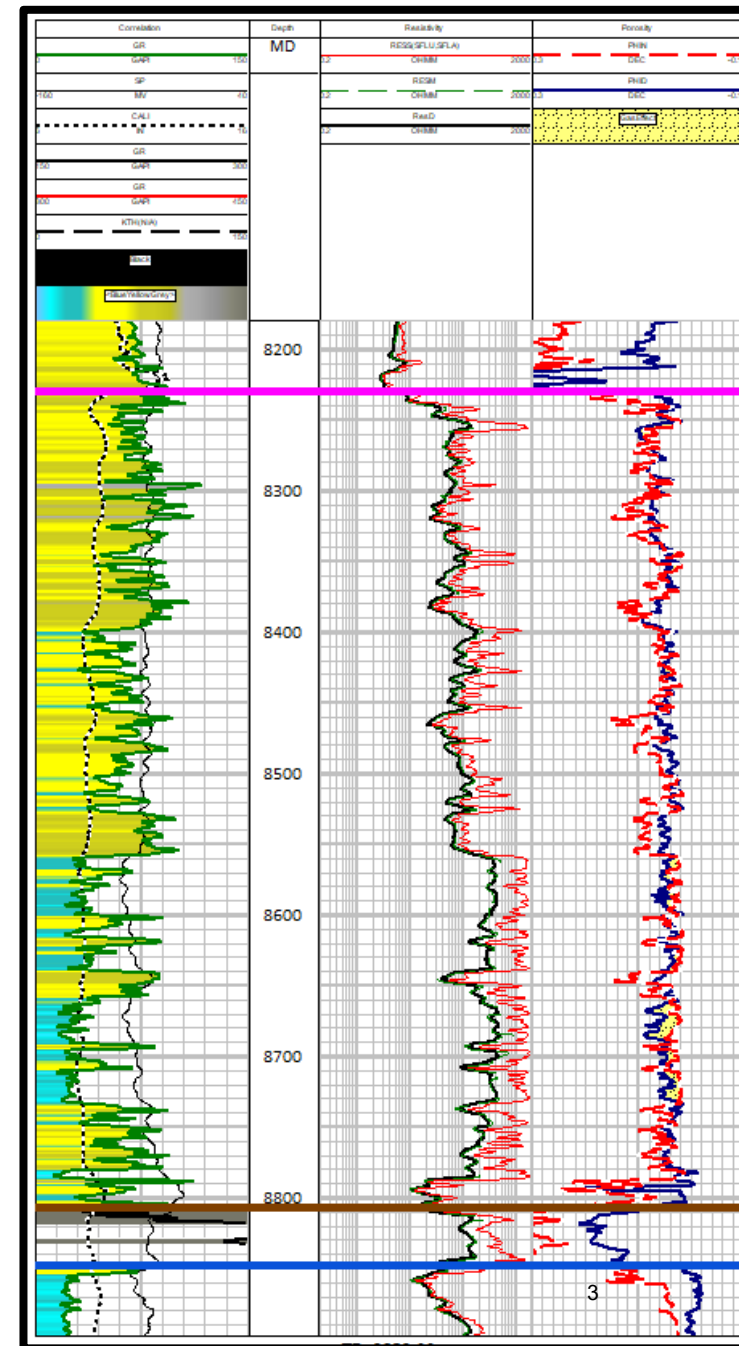
35073233770000
BARNARD 1



Mississippian 8,229'

BARNARD #1 Log Data

Woodford 8,806'
Hunton 8,847'



Volumetric Recovery Calculations
Ovintiv Mid-Continent Inc.
CD# 2021-0058 (Increased Density - 5 additional wells)

*Volumetric calculation of recoverable oil & gas
under 16-17N-8W, Kingfisher Co. (640 acre unit)*

Mississippian (-Cstr)

(1) Original Recoverable Oil & Gas in Place

	Oil (bbl)	Gas (MCF)
Porosity	4.0%	
Water Saturation	40%	
Initial Oil Volume Factor, Boi (RB/STB)	1.50	
Formation Volume Factor (bbl/ac-ft)	124	
Pay thickness (feet)	560	
Unit size (acres)	640	
Original Oil in Place (bbl)	44,493,210	
Recovery Efficiency (% of original oil in place)	10%	
Original recoverable oil in place	4,449,321	
Original recoverable gas in place at 4,000 CF/bbl		17,797,284

(2) Less: Ultimate Recovery by Existing Wells

	Oil (bbl)	Gas (MCF)
<u>Wellname</u>		
Jimenez 1H-16X (50% in sec. 16)	289,000	1,688,000
Total ultimate oil & gas recovery	289,000	1,688,000

(3) Recoverable Oil & Gas Unavailable to Existing Wells

	Oil (bbl)	Gas (MCF)
	4,160,321	16,109,284

Volumetric Recovery Calculations
Ovintiv Mid-Continent Inc.
CD# 2021-0059 (Increased Density - 5 additional wells)

*Volumetric calculation of recoverable oil & gas
under 21-17N-8W, Kingfisher Co. (640 acre unit)*

Mississippian (-Cstr)

(1) Original Recoverable Oil & Gas in Place

	Oil (bbl)	Gas (MCF)
Porosity	4.0%	
Water Saturation	40%	
Initial Oil Volume Factor, Boi (RB/STB)	1.50	
Formation Volume Factor (bbl/ac-ft)	124	
Pay thickness (feet)	560	
Unit size (acres)	640	
Original Oil in Place (bbl)	44,493,210	
Recovery Efficiency (% of original oil in place)	10%	
Original recoverable oil in place	4,449,321	
Original recoverable gas in place at 4,000 CF/bbl		17,797,284

(2) Less: Ultimate Recovery by Existing Wells

		Oil (bbl)	Gas (MCF)
<u>Wellname</u>			
Jimenez 1H-16X	(50% in sec. 21)	289,000	1,688,000
Total ultimate oil & gas recovery		289,000	1,688,000

(3) Recoverable Oil & Gas Unavailable to Existing Wells

	Oil (bbl)	Gas (MCF)
	4,160,321	16,109,284