

**Cheyenne Petroleum Company**

CD 202101057-T  
CD 202101058-T  
CD 202101059-T  
CD 202101060-T

0 2,820  
FEET

POSTED WELL DATA

WELL - CUMOIL (BBLS)  
WELL - CUMGAS (MCF)

ATTRIBUTE MAP

- Deese
- Sycamore
- Woodford
- Springer
- Hunton
- Oil Creek

WELL SYMBOLS

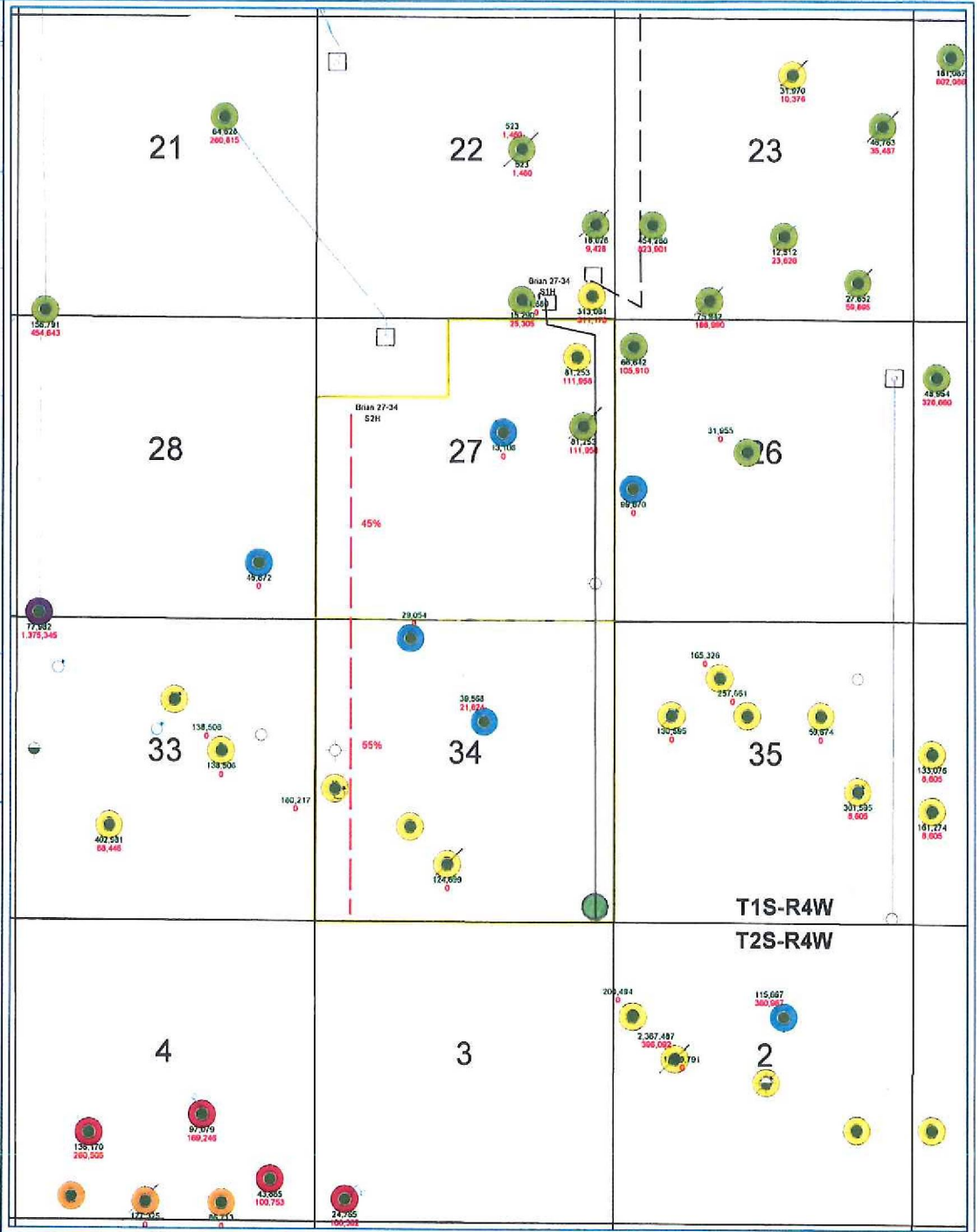
- Oil Well
- Dry Hole
- Dry Hole, With Show of Oil
- Plugged Oil Well
- Injection Well

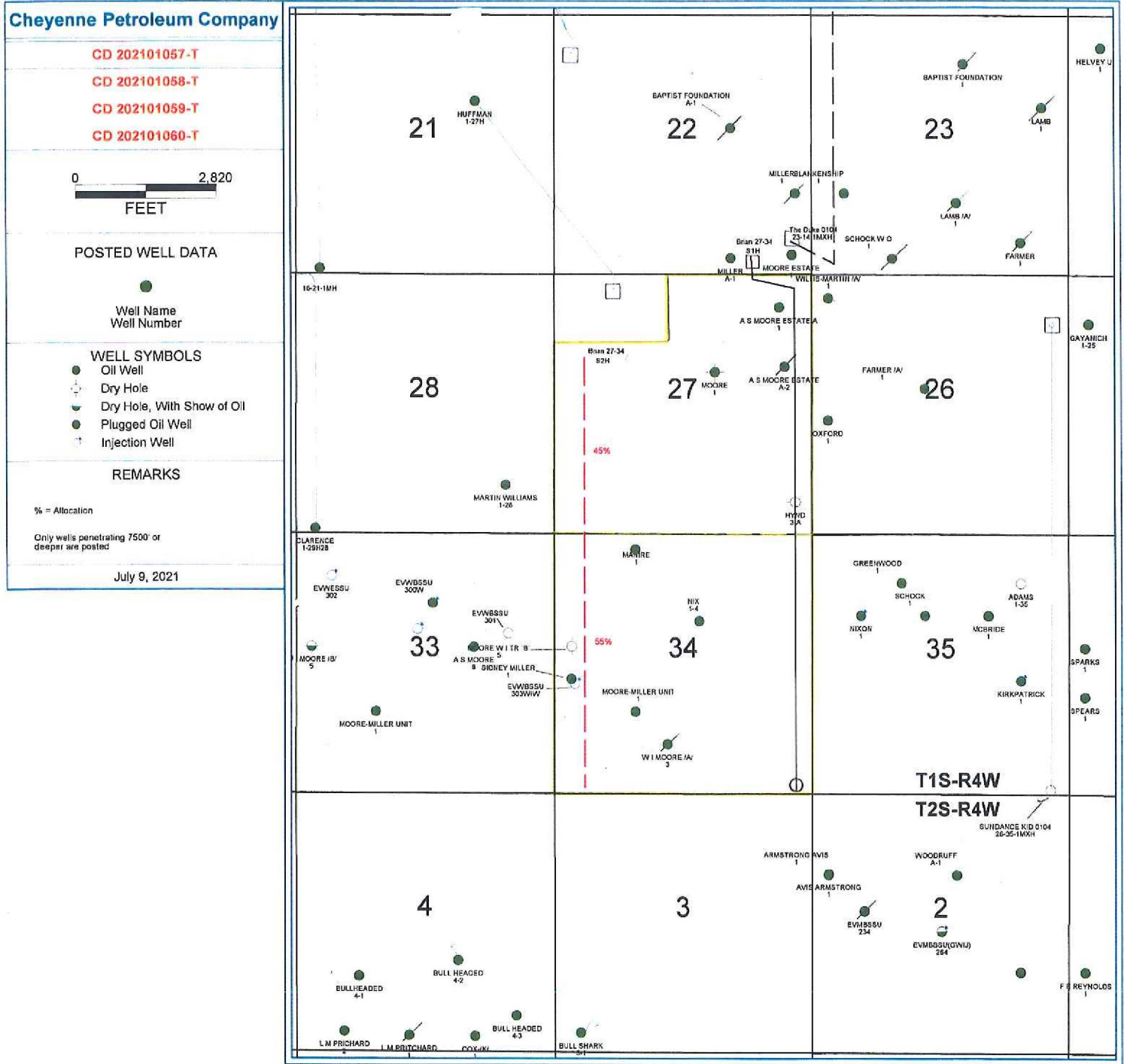
REMARKS

% = Allocation

Only wells penetrating 7500' or deeper are posted

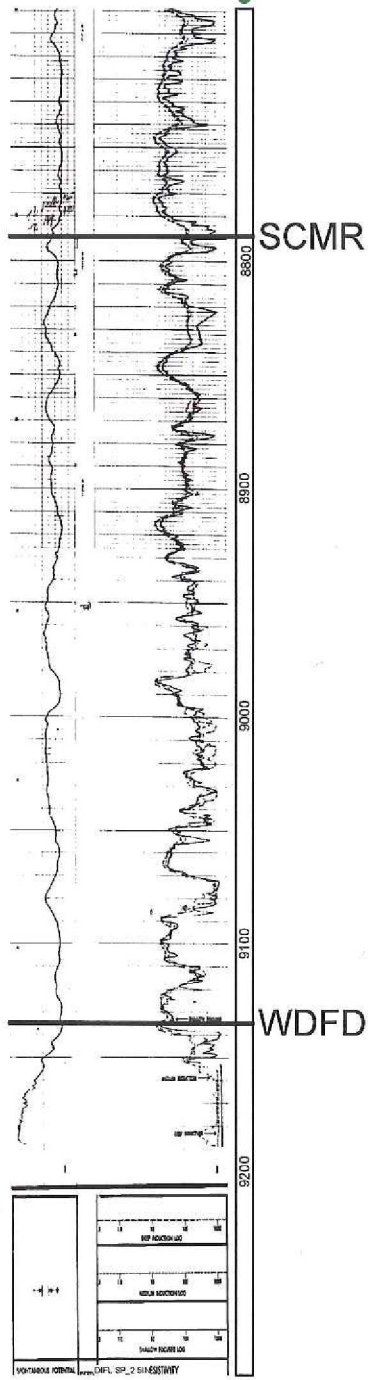
July 9, 2021







JONES L E OPERATING INC  
A S MOORE ESTATE  
A-2  
T1S R4W S27  
SWNESENE



CD# 202101059-T ID

Cheyenne Petroleum Company  
Sec 27-15-4W  
Stephens County, OK

Reservoir Sycamore  
# of Wells Requested 1

Op Name	Well Name	Zone	1st Prod	Status	Cur O Rate	Cur G Rate
Cheyenne	Brian 27-34 S1H	Sycamore	4/11/2021	Producing	769 bopd	1579 MSCFD

Reservoir Parameters		Sycamore
Depth	ft	9,400
Initial P	psi	5,200
P/Z	psi	5,355
Avg Porosity	%	5%
Avg Water Saturation	%	25%
Reservoir Temp	°F	158
Recovery Factor	%	8%
Bo		1.2
Avg Thickness	ft	325
Area	acres	640
Ac-Ft		208,000
Gas-Oil Ratio	cf/bbl	6,000

Calculated Recoverable Original Oil/Gas-In-Place		4,034 MBO	24,206 MMCF
Well	Cum Prod	Oil-Mbo	Gas-MMcf
Brian 27-34 S1H	47	66	66
Total for Section	47	66	66
Unrecoverable Remaining of Original Oi/Gas in place after first Well		3,787 MBO	22,107 MMCF

Well	Oil-Mbo	Gas-MMcf	Allocation	EUR
Brian 27-34 S1H	505	4,283	49%	2,099 MMCF
Total for Section	505	4,283		2,099 MMCF
Unrecoverable Remaining of Original Oi/Gas in place after first Well		3,787 MBO		22,107 MMCF



Cheyenne Petroleum Company  
Sec 34-1S-4W  
Stephens County, OK

CD# 202101060-T ID

Reservoir Sycamore  
# of Wells Requested 1

Op Name	Well Name	Zone	1st Prod	Status	Cur O Rate	Cur G Rate
Cheyenne	Brian 27-34 S1H	Sycamore	4/11/2021	Producing	769 bopd	1579 MSCFD

Reservoir Parameters	Sycamore
Depth	9,400 ft
Initial P	5,200 psi
P/Z	5,355 psi
Avg Porosity	5%
Avg Water Saturation	25%
Reservoir Temp	158 °F
Recovery Factor	8%
Bo	1.2
Avg Thickness	325 ft
Area	640 acres
Ac-Ft	208,000
Gas-Oil Ratio	6,000 cf/bbl

Well	Cum Prod		Rem'g Rsvs		Allocation
	Oil-Mbo	Gas-MMcf	Oil-Mbo	Gas-MMcf	
Brian 27-34 S1H	47	66	505	4,283	51%
Total for Section	47	66	505	4,283	
Unrecoverable Remaining of Original Oi/Gas in place after first Well			3,777 MBO	22,022 MMCF	
Calculated Recoverable Original Oil/Gas-in-Place			4,034 MBO	24,206 MMCF	