

TAMMIE SHIPMAN
 EXHIBIT 1
 C.S.R.
 OFFICIAL REPORTER

9/26/17

NEWFIELD
 Newfield Exploration Mid -Continent

Unnamed 1406 1H-25X

25&36-14N-6W

Canadian County, OK

ATTRIBUTE MAP

- Hunton Oil
- Hunton Gas
- Mississippi Oil
- Mississippi Gas
- Woodford Oil
- Woodford Gas
- Commingled Oil
- Commingled Gas

- WELL SYMBOLS
- X Abandoned Location - Permit
 - Abandoned Oil and Gas Well
 - Dry Hole With Show of Gas
 - Dry Hole With Show of Oil & Gas
 - Dry Hole With Show of Oil
 - Dry Hole
 - Gas Well
 - Oil Well
 - Permit
 - Plugged Gas Well
 - Plugged Oil Well

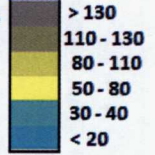
REMARKS

CD# 2017-5480-T SPC
 CD# 2017-5481-T MUH
 CD# 2017-5482-T LE

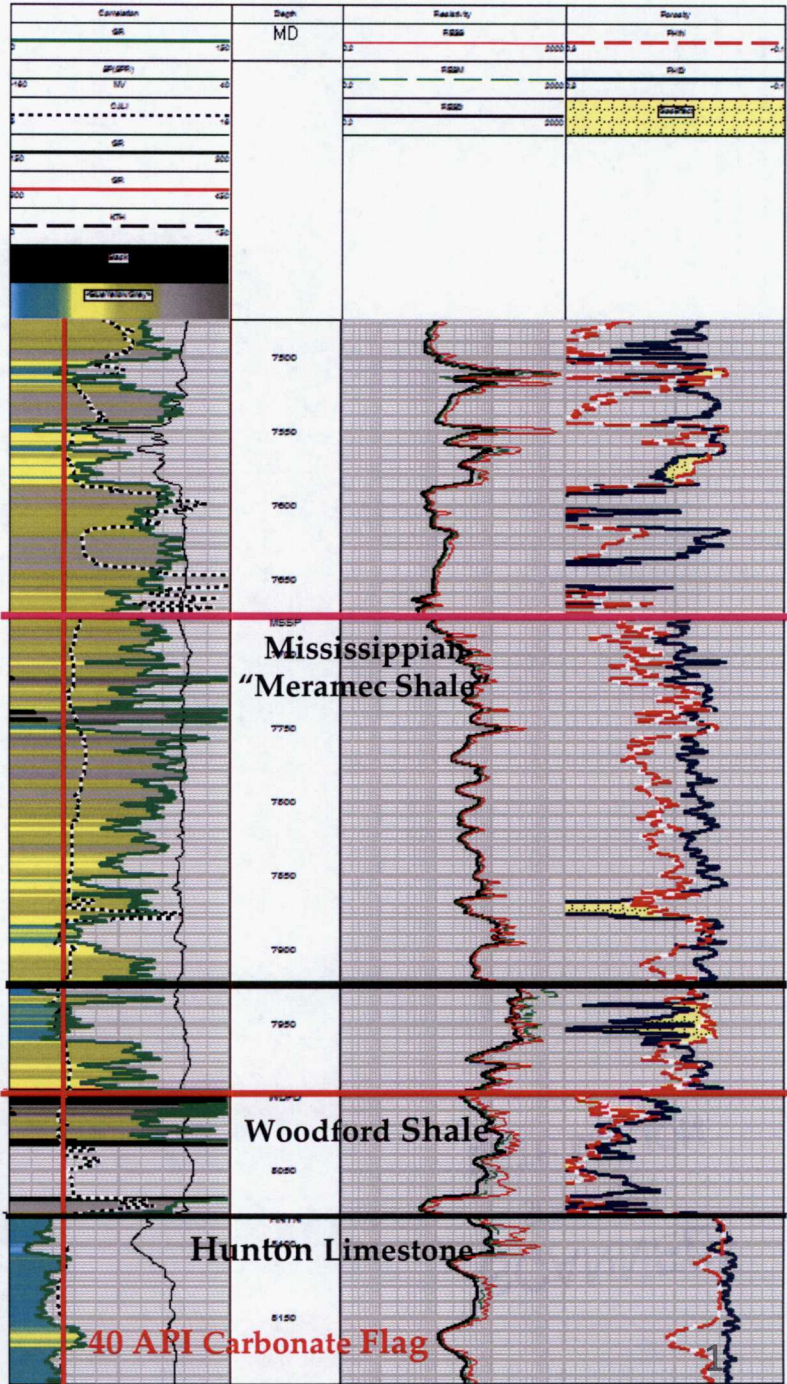
NFX Unnamed 1406 1H-25X Offset Log 25&36-14N6W

35017223570000

GR API Scale



DOMINION OKLAHOMA TEXAS EXPL & PROD
 SNYDER PAUL 24-15
 SW SW SE
 TWP: 14 N - Range: 6 W - Sec. 24



Proposed Depths
 MSSP "MRMC": 7,672'TVD
 Base of MRMC: 7,926'TVD
 WDFD: 7,991'TVD
 HNTN: 8,075'TVD
 MD: 18,361'

TD=8900.00