

Oklahoma Corporation Commission
Oil & Gas Conservation Division
Post Office Box 52000
Oklahoma City, Oklahoma 73152-2000
Rule 165: 10-3-25

Form 1002A

API No.: 35049250440000

Completion Report

Spud Date: April 09, 2015

OTC Prod. Unit No.: 049-216812

Drilling Finished Date: May 14, 2015

1st Prod Date: November 10, 2015

Completion Date: November 10, 2015

Drill Type: HORIZONTAL HOLE

Min Gas Allowable: Yes

Well Name: SHARON MAE 3H-22X

Purchaser/Measurer: NEWFIELD

Location: GARVIN 27 3N 4W
SE NE SE SW
750 FSL 2415 FWL of 1/4 SEC
Latitude: 34.69788 Longitude: -97.60761
Derrick Elevation: 1055 Ground Elevation: 1031

First Sales Date: 11/10/2015

Operator: NEWFIELD EXPLORATION MID-CON INC 20944

1 WILLIAMS CTR STE 1900
TULSA, OK 74172-0162

Completion Type	
X	Single Zone
	Multiple Zone
	Commingled

Location Exception
Order No
637569

Increased Density
Order No
637565
637566

Casing and Cement							
Type	Size	Weight	Grade	Feet	PSI	SAX	Top of CMT
SURFACE	13 3/8	54.5	J-55	1500	1500	805	SURFACE
PRODUCTION	5 1/2	23	P-110	24184	3500	3910	5998

Liner								
Type	Size	Weight	Grade	Length	PSI	SAX	Top Depth	Bottom Depth
There are no Liner records to display.								

Total Depth: 24184

Packer	
Depth	Brand & Type
There are no Packer records to display.	

Plug	
Depth	Plug Type
There are no Plug records to display.	

Initial Test Data										
Test Date	Formation	Oil BBL/Day	Oil-Gravity (API)	Gas MCF/Day	Gas-Oil Ratio Cu FT/BBL	Water BBL/Day	Pumpin or Flowing	Initial Shut-In Pressure	Choke Size	Flow Tubing Pressure
Nov 25, 2015	WOODFORD	1097	52.4	6599	6015	1592	FLOWING	1400	32	

Completion and Test Data by Producing Formation										
Formation Name: WOODFORD			Code: 319WDFD			Class: OIL				
Spacing Orders				Perforated Intervals						
Order No	Unit Size			From			To			
606602	640			13853			24038			
367970	640									
637568	MULTIUNIT									
Acid Volumes				Fracture Treatments						
32,729 GALS 15% HCL				10,812,930 # PROPPANT 176,821 BLWTR						

Formation	Top
MISSISSIPPIAN	13209
SYCAMORE	13357
WOODFORD	13555

Were open hole logs run? No
Date last log run:
Were unusual drilling circumstances encountered? No
Explanation:

Other Remarks
OCC: FLE ORDER HAS NOT BEEN ISSUED. WE HAVE ACCEPTED OPERATORS DATA AS SUBMITTED. IRREGULAR SECTION.

Lateral Holes
Sec: 22 TWP: 3N RGE: 4W County: GARVIN NE NE NE NW 52 FNL 2524 FWL of 1/4 SEC Depth of Deviation: 13280 Radius of Turn: 692 Direction: 5 Total Length: 10380 Measured Total Depth: 24184 True Vertical Depth: 13215 End Pt. Location From Release, Unit or Property Line: 52

FOR COMMISSION USE ONLY
Status: Accepted
1131733

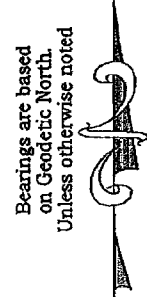
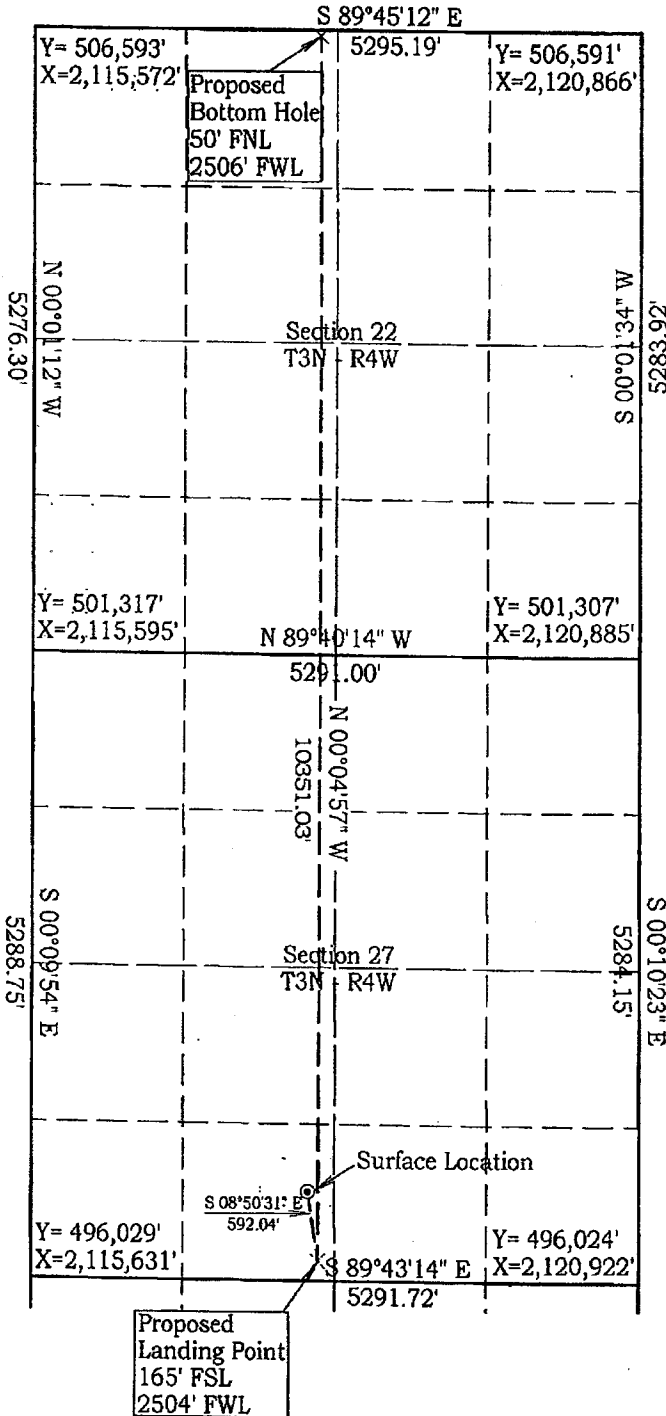
API 049-25044

Permit Plat

M & M Land Surveying, Inc.

520 "E" Street NW. Ardmore, OK. 73401
Office 580-226-0446 Mobile 580-221-4999 Fax 580-226-7158

Company Name: Newfield Exploration Mid-Continent, Inc. Lease Name: Sharon Mae #3H-22X
Section 27 Township 3 North Range 4 West County Garvin Oklahoma
Surface Location 750' FSL - 2415' FWL Elevation 1031'



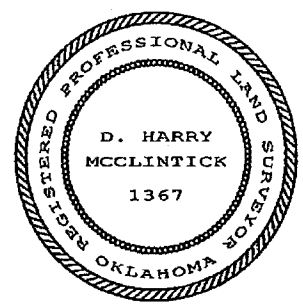
Scale: 1" = 1500'
Invoice # 15047
Date 2/4/15

Coordinates were derived from GPS RTK methods and are only accurate within ±10 feet
Location NAD 27 Oklahoma South
Surface Location
Latitude: 34.69781°
Longitude: 97.60730°
Y= 496,777'
X = 2,118,040'

D. Harry McClintick 2/4/15

D. Harry McClintick, R.P.L.S. # 1367, CA # 3093

This location has been staked according to the best official survey records available to us, but its accuracy is not guaranteed. Please review this plat and notify us immediately of any discrepancy.



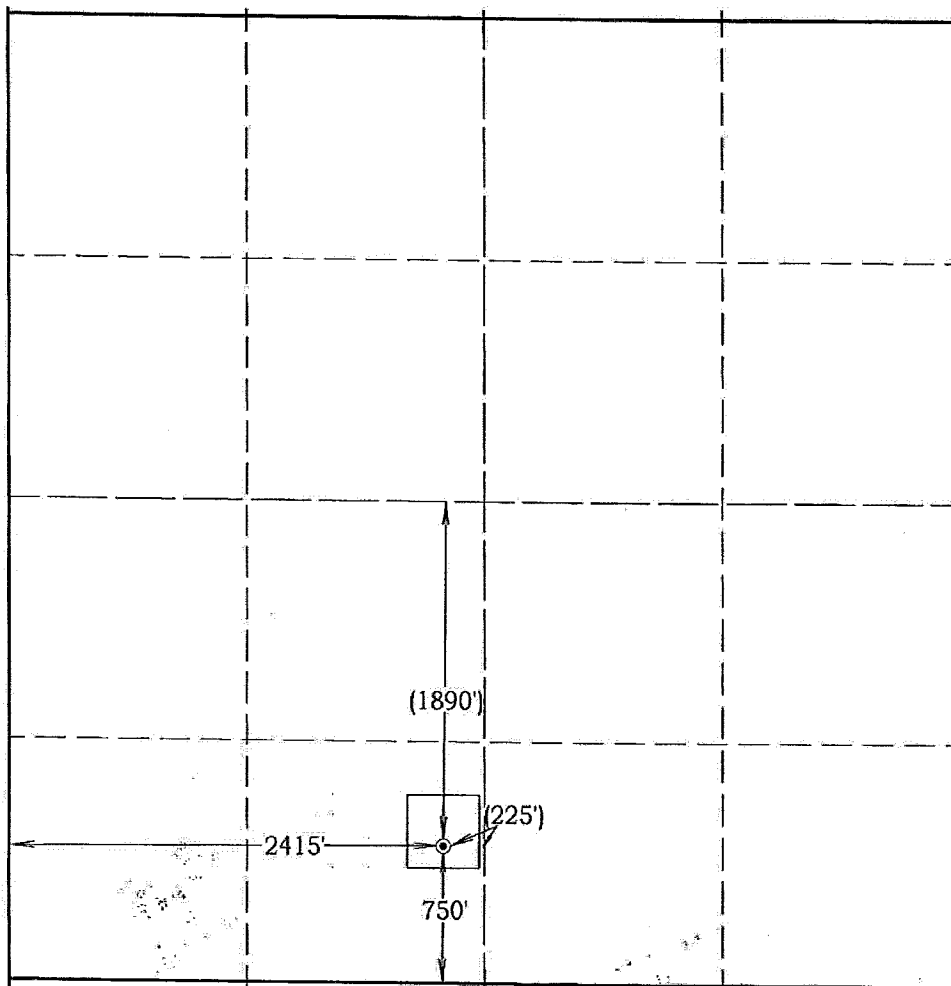
Well Location Plat

M & M Land Surveying, Inc.

520 "E" Street NW. Ardmore, OK. 73401
 Office 580-226-0446 Mobile 580-221-4999 Fax 580-226-7158

Company Name: Newfield Exploration Mid-Continent, Inc. Lease Name: Sharon Mae #3H-22X
 Section 27 Township 3 North Range 4 West County Garvin Oklahoma
 Surface Location 750' FSL - 2415' FWL Elevation 1031' Good Location? Yes

Topography
Location fell in pasture
±200' North of creek.



Bearings are based on Geodetic North. Unless otherwise noted



Scale: 1" = 1000'
 Invoice #15047
 Date 2/4/15

Elevations of Proposed Pad Corners

NW/C - 1030'
 NE/C - 1031'
 SE/C - 1033'
 SW/C - 1033'

Coordinates were derived from GPS RTK methods and are only accurate within ±10 feet

Location GPS NAD 27

Oklahoma South
 Surface Location
 Latitude: 34.69781°
 Longitude: 97.60730°
 Y= 496,777'
 X = 2,118,040'

Location NAD 83

Surface Location
 Latitude: 34.69788°
 Longitude: 97.60761°

Best Accessibility to Location
From the Northwest

Distance & Direction From From the Jct. of SH. #76 and the Garvin and Stephens county line, go 1.7 miles North on SH. #76, then 1 mile West and .5 miles South on County Roads to the Highway or Town Northwest corner of the Southwest quarter of Section 27.

CERTIFICATE:

I, D. Harry McClintick, a Registered Land Surveyor in the state of Oklahoma, do hereby certify that the above described Well Location was surveyed and staked on the ground as shown.


 D. Harry McClintick, R.P.L.S. # 1367, CA # 3093

This location has been staked according to the best official survey records available to us, but its accuracy is not guaranteed. Please review this plat and notify us immediately of any discrepancy.

The distances shown in parenthesis () are calculated distances based on the quarter section being 2640' and have not been measured.

