

Oklahoma Corporation Commission
Oil & Gas Conservation Division
Post Office Box 52000
Oklahoma City, Oklahoma 73152-2000
Rule 165: 10-3-25

Form 1002A

API No.: 35153235740000

Completion Report

Spud Date: March 15, 2016

OTC Prod. Unit No.: 153-217456

Drilling Finished Date: April 22, 2016

1st Prod Date: June 03, 2016

Completion Date: May 18, 2016

Drill Type: HORIZONTAL HOLE

Min Gas Allowable: Yes

Well Name: RANDALL 15-20-20 1H

Purchaser/Measurer: DCP MIDSTREAM

Location: WOODWARD 22 20N 20W
NE NW NE NW
225 FNL 1780 FWL of 1/4 SEC
Latitude: 36.2023419 Longitude: -99.3224268
Derrick Elevation: 2196 Ground Elevation: 2171

First Sales Date: 06/03/2016

Operator: TAPSTONE ENERGY LLC 23467

100 E MAIN ST
OKLAHOMA CITY, OK 73104-2509

Completion Type	
X	Single Zone
	Multiple Zone
	Commingled

Location Exception
Order No
653711

Increased Density
Order No
There are no Increased Density records to display.

Casing and Cement							
Type	Size	Weight	Grade	Feet	PSI	SAX	Top of CMT
SURFACE	9 5/8	36	J-55	1491	1100	692	SURFACE
PRODUCTION	7	26	P-110	11100	2440	910	1300

Liner								
Type	Size	Weight	Grade	Length	PSI	SAX	Top Depth	Bottom Depth
LINER	4 1/2	13.5	P-110	6092	0	140	10783	16875

Total Depth: 16875

Packer	
Depth	Brand & Type
There are no Packer records to display.	

Plug	
Depth	Plug Type
There are no Plug records to display.	

Initial Test Data										
Test Date	Formation	Oil BBL/Day	Oil-Gravity (API)	Gas MCF/Day	Gas-Oil Ratio Cu FT/BBL	Water BBL/Day	Pumpin or Flowing	Initial Shut-In Pressure	Choke Size	Flow Tubing Pressure
Jun 03, 2016	MISSISSIPPIAN	384	50	2088	5438	3564	FLOWING		44/64	950

Completion and Test Data by Producing Formation			
Formation Name: MISSISSIPPIAN	Code: 359MSSP	Class: OIL	
Spacing Orders		Perforated Intervals	
Order No	Unit Size	From	To
650533	640	12037	12176
Acid Volumes		Fracture Treatments	
9,500 GALLONS 15% HCL		198,936 BARRELS, 6,003,540 POUNDS PROPPANT	

Formation	Top
BASE HEEBNER	6609
TONKAWA	6967
COTTAGE GROVE	7420
HOGSHOOTER	7666
OSWEGO LIMESTONE	8076
ATOKA	8802
MISSISSIPPIAN	9602

Were open hole logs run? Yes
Date last log run: April 24, 2016
Was H2S Encountered? Yes Depth Encountered: 11729
Were unusual drilling circumstances encountered? No
Explanation:

Other Remarks
WELL WAS COMPLETED USING OPEN HOLE PACKERS FROM 16,875' TO STAGE TOOL @ 12,176'. COMPLETION WAS THROUGH CEMENTED LINER FROM 12,176' TO TOP PERFORATION @ 12,037'.

Lateral Holes

Sec: 15 TWP: 20N RGE: 22W County: WOODWARD

NW NE NE NW

196 FNL 1992 FWL of 1/4 SEC

Depth of Deviation: 11276 Radius of Turn: 976 Direction: 5 Total Length: 4623

Measured Total Depth: 16875 True Vertical Depth: 11729 End Pt. Location From Release, Unit or Property Line: 196

FOR COMMISSION USE ONLY

1133729

Status: Accepted

API NO. 35-153-23574
 OTC PROD. UNIT NO. 153217456

PLEASE TYPE OR USE BLACK INK ONLY
 NOTE:

Attach copy of original 1002A if recompletion or reentry.

OKLAHOMA CORPORATION COMMISSION
 Oil & Gas Conservation Division
 Post Office Box 52000
 Oklahoma City, Oklahoma 73152-2000
 Rule 165.10-3-25

RECEIVED

Form 1002A Rev. 2009

JUN 10 2016

ORIGINAL
 AMENDED (Reason)

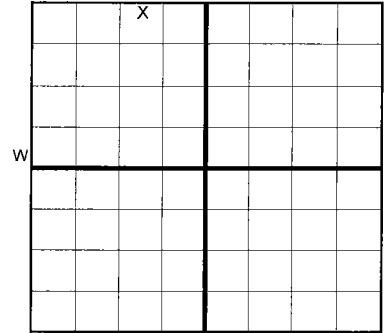
COMPLETION REPORT

TYPE OF DRILLING OPERATION
 STRAIGHT HOLE DIRECTIONAL HOLE HORIZONTAL HOLE
 SERVICE WELL
 If directional or horizontal, see reverse for bottom hole location.

SPUD DATE 3/15/2016
 DRLG FINISHED DATE 4/22/2016
 DATE OF WELL COMPLETION 5/18/2016
 1st PROD DATE 6/3/2016
 RECOMP DATE

COUNTY Woodward SEC 22 TWP 20N RGE 20W
 LEASE NAME Randall 15-20-20 WELL NO. 1H
 NE 1/4 NW 1/4 NE 1/4 NW 1/4 ENL OF 1/4 SEC 225' FWL OF 1/4 SEC 1,780'
 ELEVATIO N Derrick 2,196' Ground 2,171' Latitude (if known) 36.2023419 Longitude (if known) -99.3224268
 OPERATOR NAME Tapstone Energy, LLC OTC/OCC OPERATOR NO. 23467
 ADDRESS PO Box 1608
 CITY Oklahoma City STATE OK ZIP 73101-1608

OKLAHOMA CORPORATION COMMISSION



LOCATE WELL

COMPLETION TYPE
 SINGLE ZONE X
 MULTIPLE ZONE
 COMMINGLED
 LOCATION EXCEPTION ORDER INCREASED DENSITY ORDER NO.
 Application Date 653711 F.O.
 Application Date 650990 (Interim)

CASING & CEMENT (Form 1002C must be attached)								
TYPE	SIZE	WEIGHT	GRADE	FEET	PSI	SAX	TOP OF CMT	
CONDUCTOR								
SURFACE	9 5/8"	36	J-55	1,491'	1,100	692	Surface	
INTERMEDIATE	7"	26	P-110	11,100'	2,440	910	1,300'(Calc)	
PRODUCTION								
LINER	4 1/2"	13.5#	P-110	10,783-16,875'		140	10,783'	
							TOTAL DEPTH	16,875'

PACKER @ BRAND & TYPE PLUG @ TYPE PLUG @ TYPE
 PACKER @ BRAND & TYPE PLUG @ TYPE PLUG @ TYPE

COMPLETION & TEST DATA BY PRODUCING FORMATION 359 M55P

FORMATION	Mississippian						
SPACING & SPACING ORDER NUMBER	640 Acre - 650533						Monitor Report to Fran Focus
CLASS: Oil, Gas, Dry, Inj, Disp, Comm Disp, Svc	Oil						
PERFORATED INTERVALS	12,037-16,875' -12176	see remarks both partially cemented/partial open hole packers					
ACID/VOLUME	9,500 gal 15% HCL						
FRACTURE TREATMENT (Fluids/Prop Amounts)	198,936 bbl 6,003,540# Proppant						

Min Gas Allowable (165:10-17-7) OR Oil Allowable (165:10-13-3) Gas Purchaser/Measurer DCP Midstream First Sales Date 6/3/2016

INITIAL TEST DATA	
INITIAL TEST DATE	6/3/2016
OIL-BBL/DAY	384
OIL-GRAVITY (API)	50.0
GAS-MCF/DAY	2088
GAS-OIL RATIO CU FT/BBL	5438
WATER-BBL/DAY	3564
PUMPING OR FLOWING	Flowing
INITIAL SHUT-IN PRESSURE	
CHOKE SIZE	44/64
FLOW TUBING PRESSURE	950

AS SUBMITTED

A record of the formations drilled through, and pertinent remarks are presented on the reverse. I declare that I have knowledge of the contents of this report and am authorized by my organization to make this report, which was prepared by me or under my supervision and direction, with the data and facts stated herein to be true, correct, and complete to the best of my knowledge and belief.

SIGNATURE: *Bryan Rother* NAME (PRINT OR TYPE): Bryan Rother DATE: 6/9/2016 PHONE NUMBER: 405-702-1600
 ADDRESS: PO Box 1608 CITY: Oklahoma City STATE: OK ZIP: 73101-1608 EMAIL ADDRESS: brother@tapstoneenergy.com

PLEASE TYPE OR USE BLACK INK ONLY
FORMATION RECORD

Give formation names and tops, if available, or descriptions and thickness of formations drilled through. Show intervals cored or drillstem tested.

LEASE NAME Randall 15-20-20 WELL NO. 1H

NAMES OF FORMATIONS	TOP
Base Heebner	6,609'
Tonkawa	6,967'
Cottage Grove	7,420'
Hogshooter	7,666'
Oswego Limestone	8,076'
Atoka	8,802'
Mississippian	9,602'

FOR COMMISSION USE ONLY

ITD on file YES NO

APPROVED _____ DISAPPROVED _____

2) Reject Codes _____

Were open hole logs run? yes no

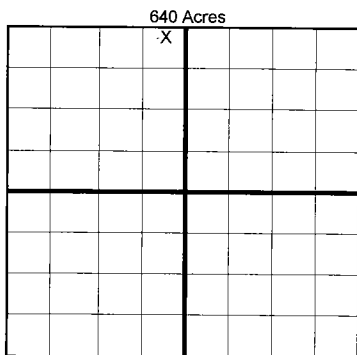
Date Last log was run 4/24/2016

Was CO₂ encountered? yes no at what depths? _____

Was H₂S encountered? yes no at what depths? 11,729' TVD

Were unusual drilling circumstances encountered? yes no
If yes, briefly explain below _____

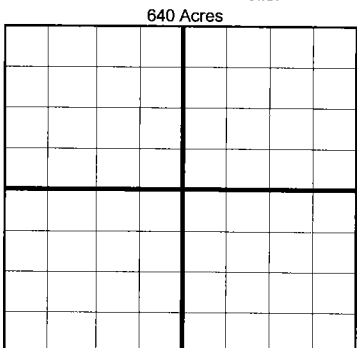
Other remarks: Well was completed using open hole packers from 16,875' to stage tool @ 12,176'. Completion was through cemented liner from 12,176' to top perforation @ 12,037'.



If more than three drainholes are proposed, attach a separate sheet indicating the necessary information.

Direction must be stated in degrees azimuth. Please note, the horizontal drainhole and its end point must be located within the boundaries of the lease or spacing unit.

Directional surveys are required for all drainholes and directional wells.



BOTTOM HOLE LOCATION FOR DIRECTIONAL HOLE

SEC	TWP	RGE	COUNTY			
Spot Location	1/4	1/4	1/4	Feet From 1/4 Sec Lines	FSL	FWL
Measured Total Depth	True Vertical Depth		BHL From Lease, Unit, or Property Line:			

BOTTOM HOLE LOCATION FOR HORIZONTAL HOLE: (LATERALS)

LATERAL #1

SEC	TWP	RGE	COUNTY			
15	20N	22W	Woodward			
Spot Location	NE 1/4	NE 1/4	NW 1/4	Feet From 1/4 Sec Lines	FNL 196'	FWL 1,992'
Depth of Deviation	11,276'	Radius of Turn	976'	Direction	5 48	Total Length 4,623'
Measured Total Depth	16,875'	True Vertical Depth	11,729	BHL From Lease, Unit, or Property Line: 196'		

LATERAL #2

SEC	TWP	RGE	COUNTY			
Spot Location	1/4	1/4	1/4	Feet From 1/4 Sec Lines	FSL	FWL
Depth of Deviation	Radius of Turn		Direction		Total Length	
Measured Total Depth	True Vertical Depth		BHL From Lease, Unit, or Property Line:			

LATERAL #3

SEC	TWP	RGE	COUNTY			
Spot Location	1/4	1/4	1/4	Feet From 1/4 Sec Lines	FSL	FWL
Depth of Deviation	Radius of Turn		Direction		Total Length	
Measured Total Depth	True Vertical Depth		BHL From Lease, Unit, or Property Line:			

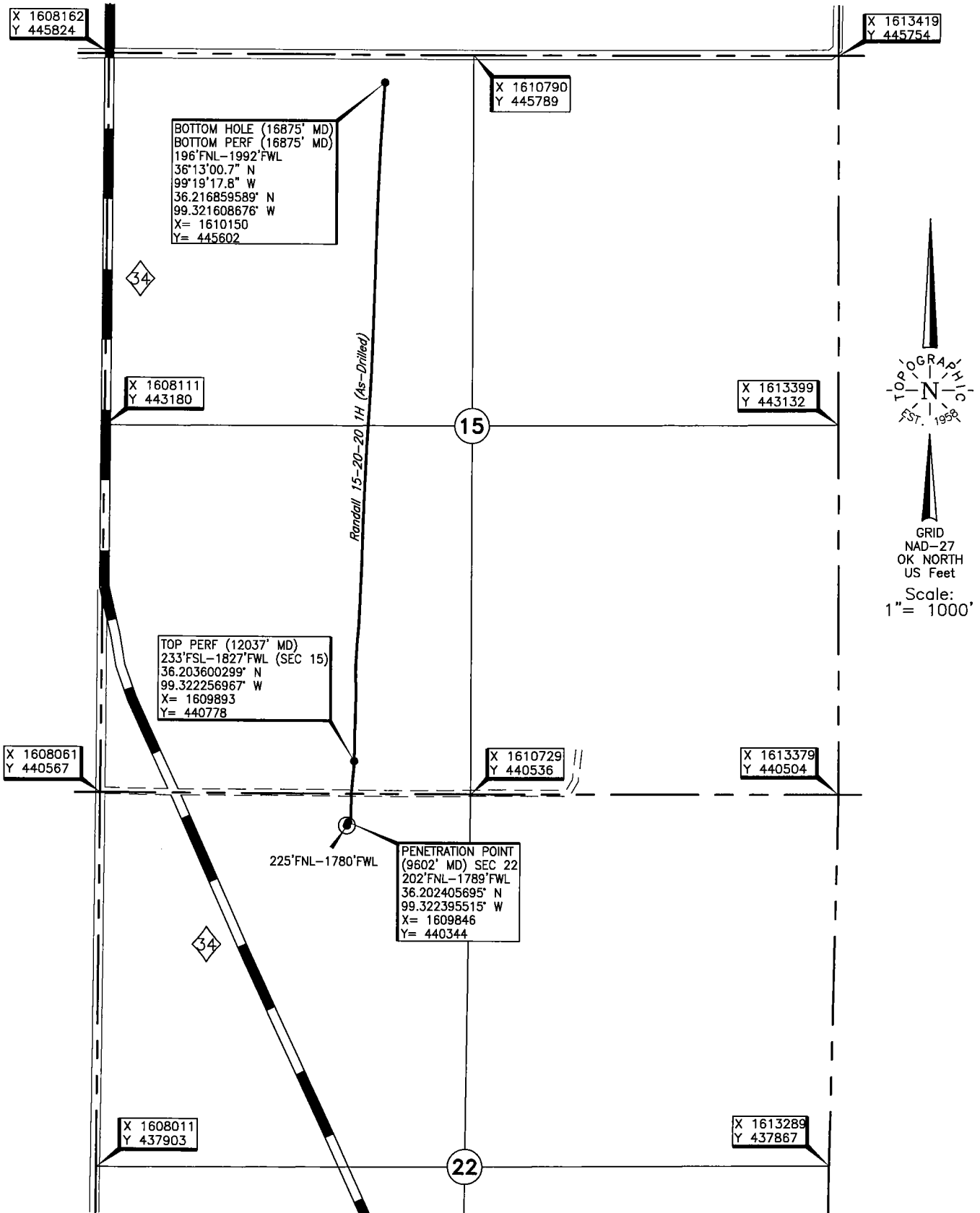
TOPOGRAPHIC LAND SURVEYORS OF OKLAHOMA

6709 NORTH CLASSEN BLVD., OKLA. CITY, OKLA. 73116 * LOCAL (405) 843-4847 * OUT OF STATE (800) 654-3219
 Certificate of Authorization No. 1293. LS

WOODWARD

County, Oklahoma

225'FNL-1780'FWL Section 22 Township 20N Range 20W I.M.



Operator: TAPSTONE ENERGY

Lease Name: RANDALL 15-20-20

Well No.: 1H

ELEVATION:
2171' Gr. at Stake

Topography & Vegetation Loc. fell in rolling grass pasture, SE Cor. of pad is ±35' NW of NE-SW pipeline