

Oklahoma Corporation Commission
Oil & Gas Conservation Division
Post Office Box 52000
Oklahoma City, Oklahoma 73152-2000
Rule 165: 10-3-25

Form 1002A

API No.: 35073252240000

Completion Report

Spud Date: February 20, 2016

OTC Prod. Unit No.: 0342

Drilling Finished Date: March 06, 2016

1st Prod Date: May 01, 2016

Completion Date: April 14, 2016

Drill Type: HORIZONTAL HOLE

Well Name: EAST HENNESSEY UNIT 235H

Purchaser/Measurer:

Location: KINGFISHER 20 19N 6W
SW SW SW SE
265 FSL 2407 FEL of 1/4 SEC
Latitude: 36.1027343 Longitude: 97.861610699
Derrick Elevation: 0 Ground Elevation: 1161

First Sales Date:

Operator: HINKLE OIL & GAS INC 21639

5600 N MAY AVE STE 295
OKLAHOMA CITY, OK 73112-4275

Completion Type	
X	Single Zone
	Multiple Zone
	Commingled

Location Exception
Order No
There are no Location Exception records to display.

Increased Density
Order No
There are no Increased Density records to display.

Casing and Cement							
Type	Size	Weight	Grade	Feet	PSI	SAX	Top of CMT
CONDUCTOR	16			100		10	SURFACE
SURFACE	9 5/8	36	J-55	460		300	SURFACE
PRODUCTION	7	26	P-110	7048		280	5497

Liner								
Type	Size	Weight	Grade	Length	PSI	SAX	Top Depth	Bottom Depth
LINER	4 1/2	11.6	P-110	5787	0	0	6911	12698

Total Depth: 12699

Packer	
Depth	Brand & Type
There are no Packer records to display.	

Plug	
Depth	Plug Type
There are no Plug records to display.	

Initial Test Data										
Test Date	Formation	Oil BBL/Day	Oil-Gravity (API)	Gas MCF/Day	Gas-Oil Ratio Cu FT/BBL	Water BBL/Day	Pumpin or Flowing	Initial Shut-In Pressure	Choke Size	Flow Tubing Pressure
Jun 09, 2016	MISSISSIPPI SOLID	389	38.5	209	537	867	FLOWING		OPEN	170

Completion and Test Data by Producing Formation			
Formation Name: MISSISSIPPI SOLID	Code: 351MSSSD	Class: OIL	
Spacing Orders		Perforated Intervals	
Order No	Unit Size	From To	
61709	UNIT	There are no Perf. Intervals records to display.	
Acid Volumes		Fracture Treatments	
222,768 GALLONS 15% HCL		306,368 BARRELS SLICK WATER, 3,940,400 POUNDS 30/50 SAND	

Formation	Top
COTTAGE GROVE	5685
CHECKERBOARD	6076
CLEVELAND	6113
BIG LIME	6245
2ND OSWEGO	6303
3RD OSWEGO	6341
4TH OSWEGO	6385
VERDIGRIS	6467
PINK LIME	6585
MISSISSIPPI	6585
RED FORK	6614
MANNING	6747

Were open hole logs run? No

Date last log run:

Were unusual drilling circumstances encountered? No

Explanation:

Other Remarks
OCC - THIS WELL IS AN OPEN HOLE COMPLETION FROM BOTTOM OF 7" CASING AT 7,048' TO TERMINUS AT 12,643'. THE 4 1/2" LINER IS NOT CEMENTED. THE WELL IS WITHIN THE UNIT BOUNDARIES AT A LEGAL DISTANCE.

Lateral Holes

Sec: 29 TWP: 19N RGE: 6W County: KINGFISHER

SE SE SE SW

167 FSL 45 FEL of 1/4 SEC

Depth of Deviation: 7056 Radius of Turn: 690 Direction: 181 Total Length: 4897

Measured Total Depth: 12643 True Vertical Depth: 7440 End Pt. Location From Release, Unit or Property Line: 167

FOR COMMISSION USE ONLY

1133730

Status: Accepted

API NO. **073-25224**
 OTC PROD. UNIT NO. **Merge #0342**

PLEASE TYPE OR USE BLACK INK ONLY
 NOTE:

Attach copy of original 1002A
 if recompletion or reentry.

OKLAHOMA CORPORATION COMMISSION
 Oil & Gas Conservation Division
 Post Office Box 52000
 Oklahoma City, Oklahoma 73152-2000
 Rule 165:10-3-25

RECEIVED

Form 1002A
 Rev. 2009

JUN 13 2016

OKLAHOMA CORPORATION COMMISSION
 640 Acres

ORIGINAL
 AMENDED (Reason)

COMPLETION REPORT

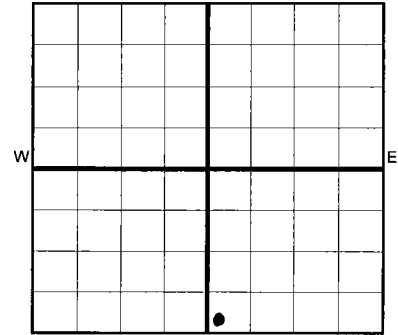
TYPE OF DRILLING OPERATION

STRAIGHT HOLE DIRECTIONAL HOLE HORIZONTAL HOLE

SERVICE WELL

If directional or horizontal, see reverse for bottom hole location.

COUNTY	Kingfisher	SEC	20	TWP	19N	RGE	06W	SPUD DATE	2/20/2016
LEASE NAME	East Hennessey Unit			WELL NO.	235H			DRLG FINISHED DATE	3/6/2016
SW 1/4 SW 1/4 SW 1/4 SE 1/4	FSL OF 1/4 SEC	265'	FEL OF 1/4 SEC	240'			DATE OF WELL COMPLETION	4/14/2016	
ELEVATION N Derrick	Ground	1161'	Latitude (if known)	36.1027343			1st PROD DATE	5/1/2016	
OPERATOR NAME	Hinkle Oil & Gas, Inc.			OTC/OCC OPERATOR NO.	21639				
ADDRESS	5600 N. May Avenue, Suite 295								
CITY	Oklahoma City	STATE	OK	ZIP	73112				



COMPLETION TYPE

SINGLE ZONE
 MULTIPLE ZONE
 Application Date _____
 COMMINGLED
 Application Date _____
 LOCATION
 EXCEPTION ORDER
 INCREASED DENSITY
 ORDER NO. _____

CASING & CEMENT (Form 1002C must be attached)

TYPE	SIZE	WEIGHT	GRADE	FEET	PSI	SAX	TOP OF CMT	
CONDUCTOR	16"			100'		10 yds	Surface	
SURFACE	9 5/8"	36#	J55	460'		300	Surface	
INTERMEDIATE								
PRODUCTION	7"	26#	P110	7048'		280	5497' (Calc)	
LINER	4 1/2"	11.6#	P110	6911'-12,698'		FS		
							TOTAL DEPTH	12,699'

PACKER @ _____ BRAND & TYPE _____ PLUG @ _____ TYPE _____ PLUG @ _____ TYPE _____
 PACKER @ _____ BRAND & TYPE _____ PLUG @ _____ TYPE _____ PLUG @ _____ TYPE _____

COMPLETION & TEST DATA BY PRODUCING FORMATION

35L MESSD

FORMATION	Mississippian Solid								<i>Reported to Frac Focus</i>
SPACING & SPACING ORDER NUMBER	61709 (unit)								
CLASS: Oil, Gas, Dry, Inj, Disp, Comm Disp, Svc	Oil								
PERFORATED INTERVALS	7001'-12,698' (OH) <i>open hole</i>								
ACID/VOLUME									
FRACTURE TREATMENT (Fluids/Prop Amounts)	222768 G. 15% HCL 306368 Bbl. SI. Wtr 3940400# 30/50 Sd								

Min Gas Allowable (165:10-17-7)

Gas Purchaser/Measurer

OR

First Sales Date

Oil Allowable (165:10-13-3)

INITIAL TEST DATA

INITIAL TEST DATE	6/9/2016				
OIL-BBL/DAY	389				
OIL-GRAVITY (API)	38.5				
GAS-MCF/DAY	209				
GAS-OIL RATIO CU FT/BBL	537				
WATER-BBL/DAY	867				
PUMPING OR FLOWING	Flowing				
INITIAL SHUT-IN PRESSURE	N/A				
CHOKE SIZE	Open				
FLOW TUBING PRESSURE	170				

AS SUBMITTED

A record of the formations drilled through, and pertinent remarks are presented on the reverse. I declare that I have knowledge of the contents of this report and am authorized by my organization to make this report, which was prepared by me or under my supervision and direction, with the data and facts stated herein to be true, correct, and complete to the best of my knowledge and belief.

<i>B. A. Hinkle</i>	Bruce A. Hinkle	6/9/2016	405-848-0924
SIGNATURE	NAME (PRINT OR TYPE)	DATE	PHONE NUMBER
5600 N. May Avenue, Suite 295	Oklahoma City OK 73112		Laurahinkle@hoagi.com
ADDRESS	CITY STATE ZIP		EMAIL ADDRESS

PLEASE TYPE OR USE BLACK INK ONLY
FORMATION RECORD

Give formation names and tops, if available, or descriptions and thickness of formations drilled through. Show intervals cored or drillstem tested.

NAMES OF FORMATIONS	TOP
Cottage Grove	5685' TVD
Checkerboard	6076'
Cleveland	6113'
Big Lime	6245'
2nd Oswego	6303'
3rd Oswego	6341'
4th Oswego	6385'
Verdigris	6467'
Pink Lime	6585'
Mississippi	6585'
Red Fork	6614'
Manning	6747'

LEASE NAME East Hennessey Unit WELL NO. 235H

FOR COMMISSION USE ONLY

ITD on file YES NO

APPROVED _____ DISAPPROVED _____

2) Reject Codes _____

Were open hole logs run? ___ yes no

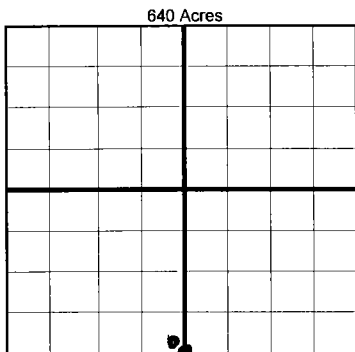
Date Last log was run _____

Was CO₂ encountered? ___ yes no at what depths? _____

Was H₂S encountered? ___ yes no at what depths? _____

Were unusual drilling circumstances encountered? ___ yes no
If yes, briefly explain below _____

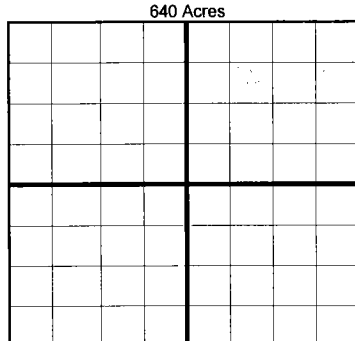
Other remarks: *OCC - This well is an open hole completion from bottom of 7" casing at 7048' to terminus at 12643'. The 4 1/2" liner is not cemented*



If more than three drainholes are proposed, attach a separate sheet indicating the necessary information.

Direction must be stated in degrees azimuth. Please note, the horizontal drainhole and its end point must be located within the boundaries of the lease or spacing unit.

Directional surveys are required for all drainholes and directional wells.



BOTTOM HOLE LOCATION FOR DIRECTIONAL HOLE

SEC	TWP	RGE	COUNTY				
Spot Location	1/4	1/4	1/4	1/4	Feet From 1/4 Sec Lines	FSL	FWL
Measured Total Depth	True Vertical Depth		BHL From Lease, Unit, or Property Line:				

BOTTOM HOLE LOCATION FOR HORIZONTAL HOLE: (LATERALS)

LATERAL #1

SEC	TWP	RGE	COUNTY				
Spot Location	SE	SE	SW	Kingfisher	167 FSL	45	EEL 2640'
Depth of Deviation	7056'	Radius of Turn	690'	Direction	181 South	Total Length	4897'
Measured Total Depth	True Vertical Depth		BHL From Lease, Unit, or Property Line: 167				
	12,643'		7440'				

LATERAL #2

SEC	TWP	RGE	COUNTY				
Spot Location	1/4	1/4	1/4	1/4	Feet From 1/4 Sec Lines	FSL	FWL
Depth of Deviation	Radius of Turn		Direction		Total Length		
Measured Total Depth	True Vertical Depth		BHL From Lease, Unit, or Property Line:				

LATERAL #3

SEC	TWP	RGE	COUNTY				
Spot Location	1/4	1/4	1/4	1/4	Feet From 1/4 Sec Lines	FSL	FWL
Depth of Deviation	Radius of Turn		Direction		Total Length		
Measured Total Depth	True Vertical Depth		BHL From Lease, Unit, or Property Line:				