

Oklahoma Corporation Commission
Oil & Gas Conservation Division
Post Office Box 52000
Oklahoma City, Oklahoma 73152-2000
Rule 165: 10-3-25

Form 1002A

API No.: 35073252230000

Completion Report

Spud Date: February 03, 2016

OTC Prod. Unit No.: 0342

Drilling Finished Date: February 20, 2016

1st Prod Date: May 04, 2016

Completion Date: April 12, 2016

Drill Type: HORIZONTAL HOLE

Well Name: EAST HENNESSEY UNIT 234H

Purchaser/Measurer:

Location: KINGFISHER 20 19N 6W
SW SW SW SE
265 FSL 2387 FEL of 1/4 SEC
Latitude: 36.1027341 Longitude: 97.861542576
Derrick Elevation: 0 Ground Elevation: 1161

First Sales Date:

Operator: HINKLE OIL & GAS INC 21639

5600 N MAY AVE STE 295
OKLAHOMA CITY, OK 73112-4275

Completion Type	
X	Single Zone
	Multiple Zone
	Commingled

Location Exception	
Order No	
There are no Location Exception records to display.	

Increased Density	
Order No	
There are no Increased Density records to display.	

Casing and Cement							
Type	Size	Weight	Grade	Feet	PSI	SAX	Top of CMT
CONDUCTOR	16			100		10	SURFACE
SURFACE	9 5/8	36	J-55	460		300	SURFACE
PRODUCTION	7	26	P-110	7085		285	5505

Liner								
Type	Size	Weight	Grade	Length	PSI	SAX	Top Depth	Bottom Depth
LINER	4 1/2	11.6	P-110	5973	0	0	6918	12891

Total Depth: 12893

Packer	
Depth	Brand & Type
There are no Packer records to display.	

Plug	
Depth	Plug Type
There are no Plug records to display.	

Initial Test Data										
Test Date	Formation	Oil BBL/Day	Oil-Gravity (API)	Gas MCF/Day	Gas-Oil Ratio Cu FT/BBL	Water BBL/Day	Pumpin or Flowing	Initial Shut-In Pressure	Choke Size	Flow Tubing Pressure
Jun 09, 2016	MISSISSIPPI SOLID	163	37.9	65	398	1244	FLOWING		OPEN	165

Completion and Test Data by Producing Formation			
Formation Name: MISSISSIPPI SOLID	Code: 351MSSSD	Class: OIL	
Spacing Orders		Perforated Intervals	
Order No	Unit Size	From To	
61709	UNIT	There are no Perf. Intervals records to display.	
Acid Volumes		Fracture Treatments	
227,136 GALLONS 15% HCL		292,224 BARRELS SLICK WATER, 3,868,100 POUNDS 30/50 SAND	

Formation	Top
CHECKERBOARD	6053
CLEVELAND	6084
BIG LIME	6244
2ND OSWEGO	6314
3RD OSWEGO	6340
4TH OSWEGO	6385
VERDIGRIS	6472
PINK LIME	6583
RED FORK	6583
MANNING	6739
MISSISSIPPI	6984

Were open hole logs run? No

Date last log run:

Were unusual drilling circumstances encountered? No

Explanation:

Other Remarks
OCC - THIS WELL IS AN OPEN HOLE COMPLETION FROM BOTTOM OF THE 7" CASING AT 7,085' TO TERMINUS AT 12,893'. THE 4 1/2" LINER IS NOT CEMENTED. THE WELL IS WITHIN THE UNIT BOUNDARY AT A LEGAL DISTANCE.

Lateral Holes

Sec: 17 TWP: 19N RGE: 6W County: KINGFISHER

SE SE SE SW

5 FSL 2 FEL of 1/4 SEC

Depth of Deviation: 7087 Radius of Turn: 658 Direction: 359 Total Length: 5148

Measured Total Depth: 12893 True Vertical Depth: 7422 End Pt. Location From Release, Unit or Property Line: 5

FOR COMMISSION USE ONLY

1133731

Status: Accepted

API NO. 073-25223
 OTC PROD UNIT NO. Merge #0342

PLEASE TYPE OR USE BLACK INK ONLY
 NOTE:

Attach copy of original 1002A
 if recompletion or reentry.

OKLAHOMA CORPORATION COMMISSION
 Oil & Gas Conservation Division
 Post Office Box 52000
 Oklahoma City, Oklahoma 73152-2000
 Rule 165:10-3-25

RECEIVED

Form 1002A
 Rev. 2009

JUN 13 2016

OKLAHOMA CORPORATION COMMISSION

ORIGINAL
 AMENDED (Reason)

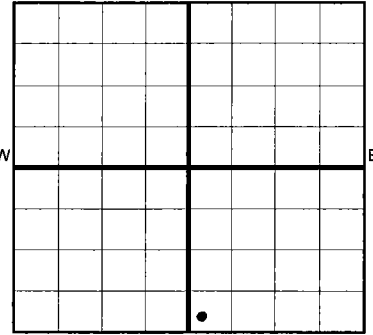
COMPLETION REPORT

TYPE OF DRILLING OPERATION
 STRAIGHT HOLE DIRECTIONAL HOLE HORIZONTAL HOLE
 SERVICE WELL

SPUD DATE 2/3/2016
 DRLG FINISHED DATE 2/20/2016
 DATE OF WELL COMPLETION 4/12/2016
 1st PROD DATE 5/4/2016

If directional or horizontal, see reverse for bottom hole location.

COUNTY	Kingfisher	SEC	20	TWP	19N	RGE	06W	DATE OF WELL COMPLETION	4/12/2016
LEASE NAME	East Hennessey Unit			WELL NO.	234H		1st PROD DATE	5/4/2016	
SW 1/4	SW 1/4	SW 1/4	SE 1/4	FSL OF 1/4 SEC	265'	FEL DF 1/4 SEC	2387'	RECOMP DATE	
ELEVATIO N Derrick	Ground	1161'	Latitude (if known)	36.1027341		Longitude (if known)	97.861542576		
OPERATOR NAME	Hinkle Oil & Gas, Inc.			OTC/OCC OPERATOR NO.	21639				
ADDRESS	5600 N. May Avenue, Suite 295								
CITY	Oklahoma City	STATE	OK	ZIP	73112				



COMPLETION TYPE

SINGLE ZONE
 MULTIPLE ZONE
 COMMINGLED
 LOCATION
 EXCEPTION ORDER
 INCREASED DENSITY
 ORDER NO.

CASING & CEMENT (Form 1002C must be attached)

TYPE	SIZE	WEIGHT	GRADE	FEET	PSI	SAX	TOP OF CMT	
CONDUCTOR	16"			100'		10 yds	Surface	
SURFACE	9 5/8"	36#	J55	460'		300	Surface	
INTERMEDIATE								
PRODUCTION	7"	26#	P110	7085'		285	5505' (Calc)	
LINER	4 1/2"	11.6#	P110	6918'-12,891'		FS		
							TOTAL DEPTH	12,893'

PACKER @ _____ BRAND & TYPE _____ PLUG @ _____ TYPE _____ PLUG @ _____ TYPE _____
 PACKER @ _____ BRAND & TYPE _____ PLUG @ _____ TYPE _____ PLUG @ _____ TYPE _____

COMPLETION & TEST DATA BY PRODUCING FORMATION *351 MSSSD*

FORMATION	Mississippian Solid						<i>Reported to Frac Focus</i>
SPACING & SPACING ORDER NUMBER	61709 (unit)						
CLASS: Oil, Gas, Dry, Inj, Disp, Comm Disp, Svc	Oil						
PERFORATED INTERVALS	7038'-12,892' (OH) <i>open hole</i>						
ACID/VOLUME							
FRACTURE TREATMENT (Fluids/Prop Amounts)	227136 G. 15% HCL 292224 Bbl. Sl. Wtr 3868100# 30/50 Sd						

Min Gas Allowable (165:10-17-7)

Gas Purchaser/Measurer

OR
 Oil Allowable (165:10-13-3)

First Sales Date

INITIAL TEST DATA

INITIAL TEST DATE	6/9/2016					
OIL-BBL/DAY	163					
OIL-GRAVITY (API)	37.9					
GAS-MCF/DAY	65					
GAS-OIL RATIO CU FT/BBL	398					
WATER-BBL/DAY	1244					
PUMPING OR FLOWING	Flowing					
INITIAL SHUT-IN PRESSURE	N/A					
CHOKE SIZE	Open					
FLOW TUBING PRESSURE	165					

AS SUBMITTED

A record of the formations drilled through, and pertinent remarks are presented on the reverse. I declare that I have knowledge of the contents of this report and am authorized by my organization to make this report, which was prepared by me or under my supervision and direction, with the data and facts stated herein to be true, correct, and complete to the best of my knowledge and belief.

<i>B. A. Hinkle</i> SIGNATURE	Bruce A. Hinkle NAME (PRINT OR TYPE)	6/9/2016 DATE	405-848-0924 PHONE NUMBER
5600 N. May Avenue, Suite 295 ADDRESS	Oklahoma City OK 73112 CITY STATE ZIP	Laurahinkle@hoagi.com EMAIL ADDRESS	

PLEASE TYPE OR USE BLACK INK ONLY
FORMATION RECORD

Give formation names and tops, if available, or descriptions and thickness of formations drilled through. Show intervals cored or drillstem tested.

NAMES OF FORMATIONS	TOP
	TVD
Checkerboard	6053'
Cleveland	6084'
Big Lime	6244'
2nd Oswego	6314'
3rd Oswego	6340'
4th Oswego	6385'
Verdigris	6472'
Pink Lime	6583'
Red Fork	6583'
Manning	6739'
Mississippi	6984'

LEASE NAME East Hennessey Unit WELL NO. 234H

FOR COMMISSION USE ONLY

ITD on file YES NO

APPROVED _____ DISAPPROVED _____

2) Reject Codes _____

Were open hole logs run? _____ yes no

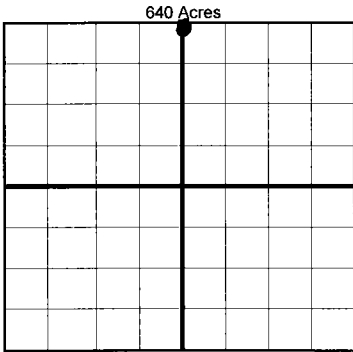
Date Last log was run _____

Was CO₂ encountered? _____ yes no at what depths? _____

Was H₂S encountered? _____ yes no at what depths? _____

Were unusual drilling circumstances encountered? _____ yes no
If yes, briefly explain below

Other remarks: *OCC - This well is an open hole completion from bottom of the 7" casing at 7085' to terminals at 12893'. The 4 1/2" liner is not cemented.*



BOTTOM HOLE LOCATION FOR DIRECTIONAL HOLE

SEC	TWP	RGE	COUNTY				
Spot Location	1/4	1/4	1/4	1/4	Feet From 1/4 Sec Lines	FSL	FWL
Measured Total Depth	True Vertical Depth		BHL From Lease, Unit, or Property Line:				

BOTTOM HOLE LOCATION FOR HORIZONTAL HOLE: (LATERALS)

LATERAL #1

SEC	TWP	RGE	COUNTY				
Spot Location	SE 1/4	SE 1/4	SW 1/4	SW 1/4	Feet From 1/4 Sec Lines	ENE 4	FEL 2640
Depth of Deviation	7087'	Radius of Turn	658'	Direction	359 North	Total Length	5148'
Measured Total Depth	12,893'	True Vertical Depth	7422'	BHL From Lease, Unit, or Property Line: 45			

LATERAL #2

SEC	TWP	RGE	COUNTY				
Spot Location	1/4	1/4	1/4	1/4	Feet From 1/4 Sec Lines	FSL	FWL
Depth of Deviation	Radius of Turn		Direction		Total Length		
Measured Total Depth	True Vertical Depth		BHL From Lease, Unit, or Property Line:				

LATERAL #3

SEC	TWP	RGE	COUNTY				
Spot Location	1/4	1/4	1/4	1/4	Feet From 1/4 Sec Lines	FSL	FWL
Depth of Deviation	Radius of Turn		Direction		Total Length		
Measured Total Depth	True Vertical Depth		BHL From Lease, Unit, or Property Line:				

If more than three drainholes are proposed, attach a separate sheet indicating the necessary information.

Direction must be stated in degrees azimuth. Please note, the horizontal drainhole and its end point must be located within the boundaries of the lease or spacing unit.

Directional surveys are required for all drainholes and directional wells.

