

Oklahoma Corporation Commission
Oil & Gas Conservation Division
Post Office Box 52000
Oklahoma City, Oklahoma 73152-2000
Rule 165: 10-3-25

Form 1002A

API No.: 35049250670001

Completion Report

Spud Date: December 11, 2015

OTC Prod. Unit No.: 049-217399

Drilling Finished Date: January 11, 2016

1st Prod Date: April 16, 2016

Completion Date: April 16, 2016

Drill Type: HORIZONTAL HOLE

Min Gas Allowable: Yes

Well Name: PARKS 3H-31X

Purchaser/Measurer: NEWFIELD

Location: GARVIN 7 2N 3W
SW NW NE NW
341 FNL 1339 FWL of 1/4 SEC
Latitude: 34.66571 Longitude: -97.55841
Derrick Elevation: 1191 Ground Elevation: 1163

First Sales Date: 04/16/2016

Operator: NEWFIELD EXPLORATION MID-CON INC 20944

1 WILLIAMS CTR STE 1900
TULSA, OK 74172-0162

Completion Type	
X	Single Zone
	Multiple Zone
	Commingled

Location Exception
Order No
There are no Location Exception records to display.

Increased Density
Order No
There are no Increased Density records to display.

Casing and Cement							
Type	Size	Weight	Grade	Feet	PSI	SAX	Top of CMT
CONDUCTOR	20	94	J-55	112		27	SURFACE
SURFACE	9 5/8	40	K-55	1500	1500	410	SURFACE
PRODUCTION	5 1/2	20	P-110	22795	440	3395	SURFACE

Liner								
Type	Size	Weight	Grade	Length	PSI	SAX	Top Depth	Bottom Depth
There are no Liner records to display.								

Total Depth: 22800

Packer	
Depth	Brand & Type
There are no Packer records to display.	

Plug	
Depth	Plug Type
There are no Plug records to display.	

Initial Test Data										
Test Date	Formation	Oil BBL/Day	Oil-Gravity (API)	Gas MCF/Day	Gas-Oil Ratio Cu FT/BBL	Water BBL/Day	Pumpin or Flowing	Initial Shut-In Pressure	Choke Size	Flow Tubing Pressure
Apr 28, 2016	WOODFORD	1144	46	1743	1524	1718	FLOWING	1900	34	

Completion and Test Data by Producing Formation										
Formation Name: WOODFORD			Code: 319WDFD			Class: OIL				
Spacing Orders				Perforated Intervals						
Order No	Unit Size			From			To			
648978	UNIT			12600			22655			
Acid Volumes				Fracture Treatments						
38,100 GALS 15% HCL				11,022,360 # PROPPANT, 226,038 BLWTR						

Formation	Top
CANEY	12084
SYCAMORE	12368
WOODFORD	12520

Were open hole logs run? No

Date last log run:

Were unusual drilling circumstances encountered? No

Explanation:

Other Remarks
IRREGULAR SECTION.

Lateral Holes
Sec: 31 TWP: 3N RGE: 3W County: GARVIN
NW NE NE NW
74 FNL 2274 FWL of 1/4 SEC
Depth of Deviation: 10817 Radius of Turn: 759 Direction: 5 Total Length: 10110
Measured Total Depth: 22800 True Vertical Depth: 12228 End Pt. Location From Release, Unit or Property Line: 74

FOR COMMISSION USE ONLY
Status: Accepted
1133584

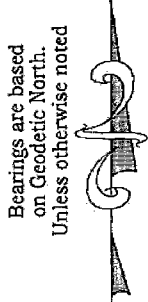
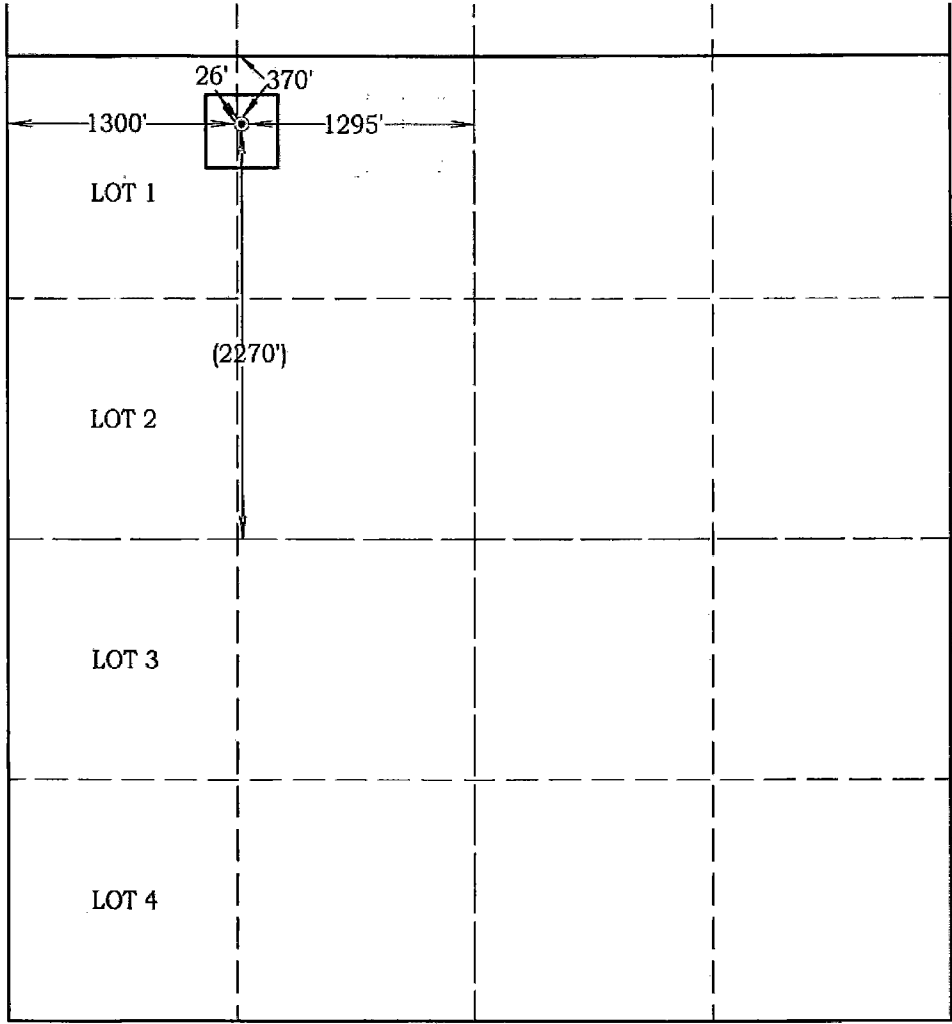
Well Location Plat

M & M Land Surveying, Inc.

520 "E" Street NW. Ardmore, OK. 73401
Office 580-226-0446 Mobile 580-221-4999 Fax 580-226-7158

Company Name: Newfield Exploration Mid-Continent, Inc. Lease Name: Parks #3H-31X
 Section 7 Township 2 North Range 3 West County Garvin Oklahoma
 Surface Location 370' FNL - 1300' FWL Elevation 1163' Good Location? Yes Topography _____

Location fell in pasture and scattered brush, ±260' South of a drain.



Scale: 1" = 1000'
 Invoice #15202
 Date 5/26/15
 Elevations of Proposed Pad Corners
 NW/C - 1149'
 NE/C - 1149'
 SE/C - 1170'
 SW/C - 1170'

Coordinates were derived from GPS RTK methods and are only accurate within ±10 feet

Location GPS NAD 27
 Oklahoma South
 Surface Location
 Latitude: 34.66555°
 Longitude: 97.55824°
 Y= 485,100'
 X = 2,132,839'

Location NAD 83
 Surface Location
 Latitude: 34.66563°
 Longitude: 97.55854°

Best Accessibility to Location From the North or West

Distance & Direction From From the Jct. of SH. #29 & SH. #76 North, go 1 mile East on S.H. #29, then 2.7 miles North, then 1 mile East on county roads to a lease road South along the West line of Section 6.
 Highway or Town _____

CERTIFICATE:

I, D. Harry McClintick, a Registered Land Surveyor in the state of Oklahoma, do hereby certify that the above described Well Location was surveyed and staked on the ground as shown.

D. Harry McClintick
 D. Harry McClintick, R.P.L.S. # 1367, CA # 3093

This location has been staked according to the best official survey records available to us, but its accuracy is not guaranteed. Please review this plat and notify us immediately of any discrepancy.

The distances shown in parenthesis () are calculated distances based on the quarter section being 2640' and have not been measured.

