

Oklahoma Corporation Commission  
 Oil & Gas Conservation Division  
 Post Office Box 52000  
 Oklahoma City, Oklahoma 73152-2000  
 Rule 165: 10-3-25

Form 1002A

API No.: 35049250740000

**Completion Report**

Spud Date: January 14, 2016

OTC Prod. Unit No.: 049-217406

Drilling Finished Date: February 07, 2016

1st Prod Date: April 25, 2016

Completion Date: April 25, 2016

**Drill Type: HORIZONTAL HOLE**

Min Gas Allowable: Yes

Well Name: PARKS 2H-31XR

Purchaser/Measurer: NEWFIELD

Location: GARVIN 7 2N 3W  
 SW NW NE NW  
 341 FNL 1379 FWL of 1/4 SEC  
 Latitude: 34.66571 Longitude: -97.5583  
 Derrick Elevation: 1191 Ground Elevation: 1163

First Sales Date: 04/25/2016

Operator: NEWFIELD EXPLORATION MID-CON INC 20944

1 WILLIAMS CTR STE 1900  
 TULSA, OK 74172-0162

Completion Type	
X	Single Zone
	Multiple Zone
	Commingled

Location Exception
Order No
There are no Location Exception records to display.

Increased Density
Order No
There are no Increased Density records to display.

Casing and Cement							
Type	Size	Weight	Grade	Feet	PSI	SAX	Top of CMT
CONDUCTOR	20	94	J-55	112		27	SURFACE
SURFACE	9 5/8	40	K-55	1505	1500	395	SURFACE
PRODUCTION	5 1/2	20	P-110	23055		3700	425

Liner								
Type	Size	Weight	Grade	Length	PSI	SAX	Top Depth	Bottom Depth
There are no Liner records to display.								

**Total Depth: 23055**

Packer	
Depth	Brand & Type
There are no Packer records to display.	

Plug	
Depth	Plug Type
There are no Plug records to display.	

Initial Test Data										
Test Date	Formation	Oil BBL/Day	Oil-Gravity (API)	Gas MCF/Day	Gas-Oil Ratio Cu FT/BBL	Water BBL/Day	Pumpin or Flowing	Initial Shut-In Pressure	Choke Size	Flow Tubing Pressure
May 08, 2016	WOODFORD	914	48.7	2455	2686	1352	FLOWING	2200	44	497

Completion and Test Data by Producing Formation										
Formation Name: WOODFORD			Code: 319WDFD			Class: OIL				
<b>Spacing Orders</b>				<b>Perforated Intervals</b>						
<b>Order No</b>	<b>Unit Size</b>			<b>From</b>			<b>To</b>			
648978	UNIT			12750			22910			
<b>Acid Volumes</b>				<b>Fracture Treatments</b>						
37,300 GALS 15% HCL				232,774 # PROPPANT, 10,972,036 BLWTR						

Formation	Top
CANEY	11996
SYCAMORE	12400
WOODFORD	12506

Were open hole logs run? No

Date last log run:

Were unusual drilling circumstances encountered? No

Explanation:

Other Remarks
IRREGULAR SECTION.

Lateral Holes
Sec: 31 TWP: 3N RGE: 3W County: GARVIN
NW NW NE NW
51 FNL 1335 FWL of 1/4 SEC
Depth of Deviation: 12013 Radius of Turn: 764 Direction: 360 Total Length: 10188
Measured Total Depth: 23055 True Vertical Depth: 12478 End Pt. Location From Release, Unit or Property Line: 51

FOR COMMISSION USE ONLY
Status: Accepted
1133647

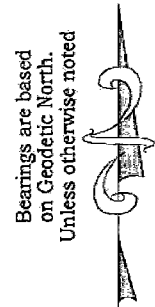
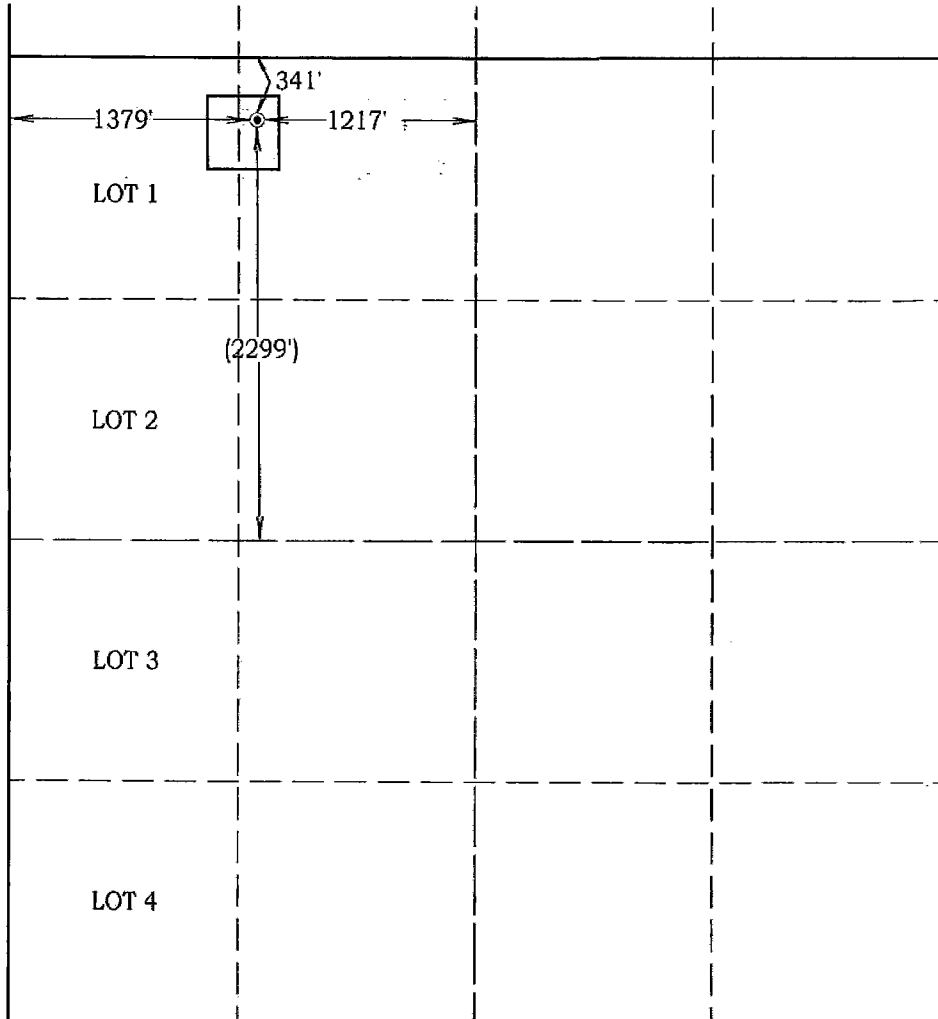
# Well Location Plat

## M & M Land Surveying, Inc.

520 "E" Street NW. Ardmore, OK. 73401  
Office 580-226-0446 Mobile 580-221-4999 Fax 580-226-7158

Company Name: Newfield Exploration Mid-Continent, Inc. Lease Name: Parks #2H-31XR  
 Section 7 Township 2 North Range 3 West County Garvin Oklahoma  
 Surface Location 341' FNL - 1379' FWL Elevation 1163' Good Location? Yes Topography \_\_\_\_\_

Location fell on existing pad. \_\_\_\_\_  
 \_\_\_\_\_  
 \_\_\_\_\_



Scale: 1" = 1000'  
 Invoice #15502  
 Date 12/17/15  
 Elevations of Proposed Pad Corners

NW/C - N/A  
 NE/C - N/A  
 SE/C - N/A  
 SW/C - N/A

**Coordinates were derived from GPS RTK methods and are only accurate within ±10 feet**

**Location GPS NAD 27 Oklahoma South Surface Location**  
 Latitude: 34.66563°  
 Longitude: 97.55797°  
 Y= 485,129'  
 X = 2,132,918'

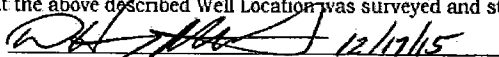
**Location NAD 83 Surface Location**  
 Latitude: 34.66571°  
 Longitude: 97.55829°  
 Y= 485,170'  
 X = 2,101,321'

Best Accessibility to Location From the North or West

Distance & Direction From From the Jct. of SH. #29 & SH. #76 North, go 1 mile East on S.H. #29, then 2.7 miles North, then 1 mile East on county roads to a lease road South along the West line of Section 6  
 Highway or Town \_\_\_\_\_

### CERTIFICATE:

I, D. Harry McClintick, a Registered Land Surveyor in the state of Oklahoma, do hereby certify that the above described Well Location was surveyed and staked on the ground as shown.

  
 D. Harry McClintick, R.P.L.S. # 1367, CA # 3093

This location has been staked according to the best official survey records available to us, but its accuracy is not guaranteed. Please review this plat and notify us immediately of any discrepancy.

The distances shown in parenthesis ( ) are calculated distances based on the quarter section being 2640' and have not been measured.

