

Oklahoma Corporation Commission
Oil & Gas Conservation Division
Post Office Box 52000
Oklahoma City, Oklahoma 73152-2000
Rule 165: 10-3-25

Form 1002A

API No.: 35017248790000

Completion Report

Spud Date: February 07, 2016

OTC Prod. Unit No.: 017-217551

Drilling Finished Date: March 21, 2016

1st Prod Date: May 25, 2016

Completion Date: May 25, 2016

Drill Type: HORIZONTAL HOLE

Well Name: HANSEN 14-14N-9W 1H

Purchaser/Measurer:

Location: CANADIAN 14 14N 9W
SE SW SW SE
245 FSL 2120 FEL of 1/4 SEC
Derrick Elevation: 1399 Ground Elevation: 1369

First Sales Date:

Operator: DEVON ENERGY PRODUCTION CO LP 20751

333 W SHERIDAN AVE
OKLAHOMA CITY, OK 73102-5010

Completion Type	
X	Single Zone
	Multiple Zone
	Commingled

Location Exception	
Order No	
647654	

Increased Density	
Order No	
There are no Increased Density records to display.	

Casing and Cement							
Type	Size	Weight	Grade	Feet	PSI	SAX	Top of CMT
CONDUCTOR	20"	94#	J-55	65		8	SURFACE
SURFACE	13 3/8"	54.5#	K-55	1500		899	SURFACE
INTERMEDIATE	9 5/8"	40#	HCP-110	9254		675	6680
PRODUCTION	5 1/2"	23#	P-110EC	15474		1945	7200

Liner								
Type	Size	Weight	Grade	Length	PSI	SAX	Top Depth	Bottom Depth
There are no Liner records to display.								

Total Depth: 15484

Packer	
Depth	Brand & Type
10285	BAKER PACKER

Plug	
Depth	Plug Type
15391	PLUG BACK DEPTH
9900	CEMENT PLUG

Initial Test Data										
Test Date	Formation	Oil BBL/Day	Oil-Gravity (API)	Gas MCF/Day	Gas-Oil Ratio Cu FT/BBL	Water BBL/Day	Pumpin or Flowing	Initial Shut-In Pressure	Choke Size	Flow Tubing Pressure
Jun 02, 2016	MISSISSIPPIAN	403		2538	6298	1320	PUMPING		26	1524

Completion and Test Data by Producing Formation										
Formation Name: MISSISSIPPIAN			Code: 359MSSP			Class: OIL				
Spacing Orders				Perforated Intervals						
Order No	Unit Size			From			To			
637977	640			10750			15294			
Acid Volumes				Fracture Treatments						
238 BBLS OF ACID				299,590 BBLS OF FLUID						
				12,840,320 LBS OF SAND						

Formation	Top
MISSISSIPPIAN	10397

Were open hole logs run? Yes
Date last log run: March 03, 2016

Were unusual drilling circumstances encountered? No
Explanation:

Other Remarks
OCC: FLE ORDER HAS NOT BEEN ISSUED. WE HAVE ACCEPTED OPERATORS DATA AS SUBMITTED. IRREGULAR SECTION.

Lateral Holes
Sec: 14 TWP: 14N RGE: 9W County: CANADIAN NE NW NW NE 51 FNL 2113 FEL of 1/4 SEC Depth of Deviation: 10307 Radius of Turn: 363 Direction: 1 Total Length: 4814 Measured Total Depth: 15484 True Vertical Depth: 10545 End Pt. Location From Release, Unit or Property Line: 51

FOR COMMISSION USE ONLY
Status: Accepted
1133707

TOPOGRAPHIC LAND SURVEYORS OF OKLAHOMA

6709 NORTH CLASSEN BLVD., OKLA. CITY, OKLA. 73116 * LOCAL (405) 843-4847 * OUT OF STATE (800) 654-3219

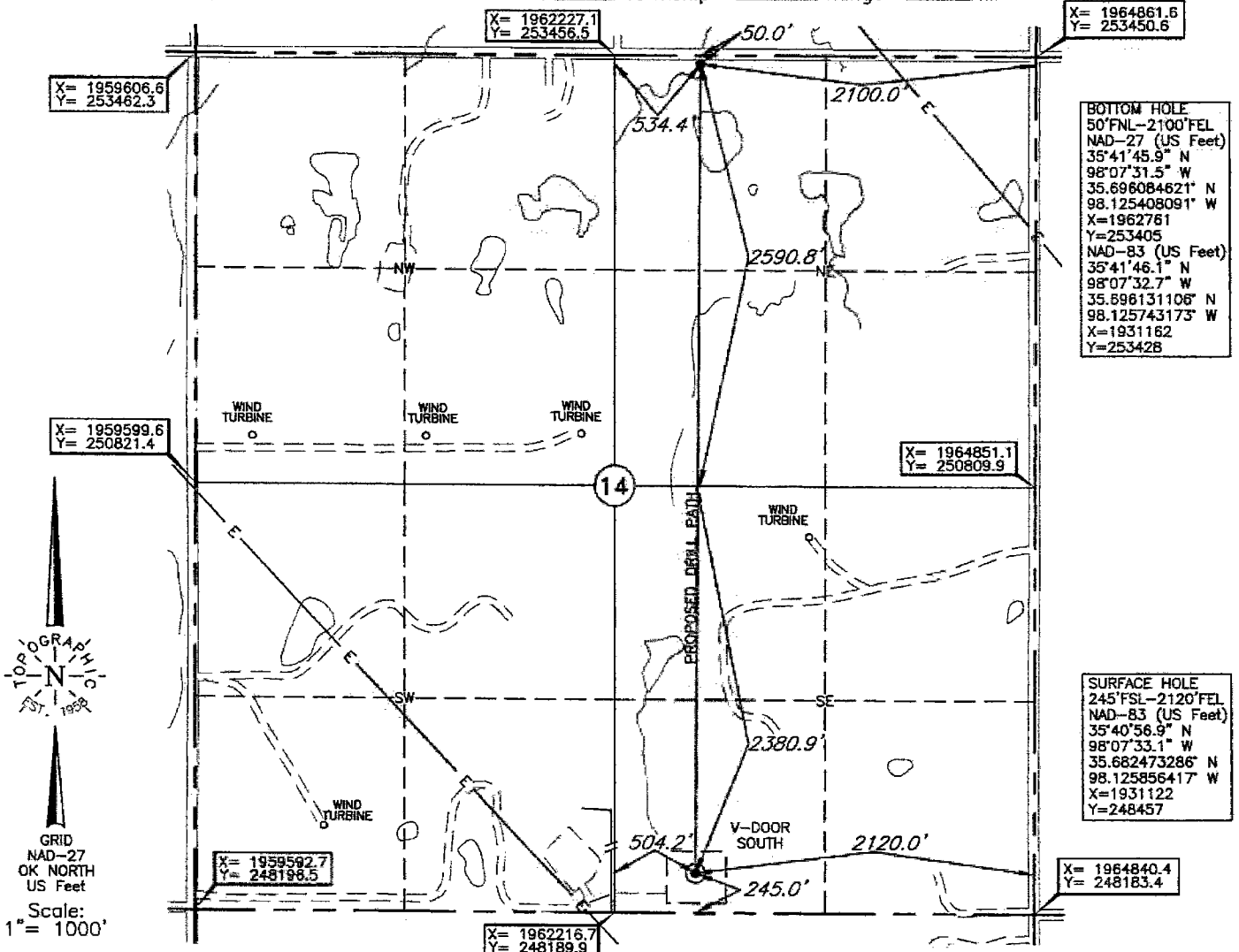
Certificate of Authorization No. 1293 LS

CANADIAN

County, Oklahoma

API 017-24879

245°FSL - 2120°FEL Section 14 Township 14N Range 9W I.M.



BOTTOM HOLE
 50°FNL-2100°FEL
 NAD-27 (US Feet)
 35°41'45.9" N
 98°07'31.5" W
 35.696084621" N
 98.125408091" W
 X=1962761
 Y=253405
 NAD-83 (US Feet)
 35°41'46.1" N
 98°07'32.7" W
 35.696131106" N
 98.125743173" W
 X=1931162
 Y=253428

SURFACE HOLE
 245°FSL-2120°FEL
 NAD-83 (US Feet)
 35°40'56.9" N
 98°07'33.1" W
 35.682473286" N
 98.125856417" W
 X=1931122
 Y=248457

BOTTOM HOLE AND DRILL PATH INFORMATION
 PROVIDED BY OPERATOR LISTED, NOT SURVEYED.

NOTE:
 The information shown herein is for construction purposes ONLY.

Operator: DEVON ENERGY PRODUCTION CO., LP

Lease Name: HANSEN 14-14N-9W

Well No.: 1H **ELEVATION:** 1369' Gr. at Stake

Topography & Vegetation Loc. fell in sloping pasture

Good Drill Site? Yes Reference Stakes or Alternate Location
 Stakes Set None

Best Accessibility to Location From West off county road
 Distance & Direction
 from Hwy Jct or Town From Kingfisher-Canadian County Line and Calumet Road, go ±3.0 mi South
 to the SE Cor. of Sec. 14-T14N-R9W

This information was gathered with a GPS receiver with ±1 foot horiz./vert. accuracy

DATUM: NAD-27
 LAT: 35°40'56.7"N
 LONG: 98°07'31.9"W
 LAT: 35.682426417° N
 LONG: 98.125521565° W
 STATE PLANE
 COORDINATES: (US Feet)
 ZONE: OK NORTH
 X: 1962721
 Y: 248434

Date of Drawing: Dec. 23, 2015
 Invoice # 254989 Date Staked: Dec. 21, 2015 AC

CERTIFICATE:

I, T. Wayne Fisch an Oklahoma Licensed Land Surveyor and an authorized agent of Topographic Land Surveyors of Oklahoma, do hereby certify to the information shown herein

T. Wayne Fisch
 Oklahoma Lic. No. 1378

