

Oklahoma Corporation Commission
 Oil & Gas Conservation Division
 Post Office Box 52000
 Oklahoma City, Oklahoma 73152-2000
 Rule 165: 10-3-25

Form 1002A

API No.: 35049250620001

Completion Report

Spud Date: November 29, 2015

OTC Prod. Unit No.: 049-217400

Drilling Finished Date: February 01, 2016

1st Prod Date: April 20, 2016

Completion Date: April 20, 2016

Drill Type: HORIZONTAL HOLE

Min Gas Allowable: Yes

Well Name: PARKS 5H-31X

Purchaser/Measurer: NEWFIELD

Location: GARVIN 30 3N 3W
 NW SW SE SE
 412 FSL 1222 FEL of 1/4 SEC
 Latitude: 34.69682 Longitude: -97.54961
 Derrick Elevation: 1185 Ground Elevation: 1155

First Sales Date: 04/20/2016

Operator: NEWFIELD EXPLORATION MID-CON INC 20944

1 WILLIAMS CTR STE 1900
 TULSA, OK 74172-0162

Completion Type	
X	Single Zone
	Multiple Zone
	Commingled

Location Exception
Order No
There are no Location Exception records to display.

Increased Density
Order No
There are no Increased Density records to display.

Casing and Cement							
Type	Size	Weight	Grade	Feet	PSI	SAX	Top of CMT
CONDUCTOR	20	94	J-55	114		27	SURFACE
SURFACE	9 5/8	40	K55	1525	500	395	SURFACE
PRODUCTION	5 1/2	23	P-110	21967		3270	SURFACE

Liner								
Type	Size	Weight	Grade	Length	PSI	SAX	Top Depth	Bottom Depth
There are no Liner records to display.								

Total Depth: 21967

Packer	
Depth	Brand & Type
There are no Packer records to display.	

Plug	
Depth	Plug Type
There are no Plug records to display.	

Initial Test Data										
Test Date	Formation	Oil BBL/Day	Oil-Gravity (API)	Gas MCF/Day	Gas-Oil Ratio Cu FT/BBL	Water BBL/Day	Pumpin or Flowing	Initial Shut-In Pressure	Choke Size	Flow Tubing Pressure
May 12, 2015	WOODFORD	1126	48.1	2491	2212	1690	FLOWING	1900	32	

Completion and Test Data by Producing Formation										
Formation Name: WOODFORD			Code: 319WDFD			Class: OIL				
Spacing Orders				Perforated Intervals						
Order No	Unit Size			From			To			
648978	UNIT			12455			21874			
Acid Volumes				Fracture Treatments						
34,400 GALS 15% HCL				10,228,080 # PROPPANT 205,798 BLWTR						

Formation	Top
CANEY	11630
SYCAMORE	11808
WOODFORD	11994

Were open hole logs run? No

Date last log run:

Were unusual drilling circumstances encountered? No

Explanation:

Other Remarks
IRREGULAR SECTION.

Lateral Holes
Sec: 6 TWP: 2N RGE: 3W County: GARVIN
SW NW SE SE
856 FSL 1262 FEL of 1/4 SEC
Depth of Deviation: 11590 Radius of Turn: 783 Direction: 181 Total Length: 9737
Measured Total Depth: 21967 True Vertical Depth: 12222 End Pt. Location From Release, Unit or Property Line: 856

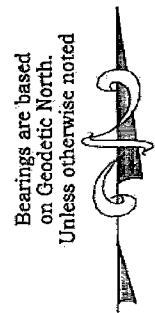
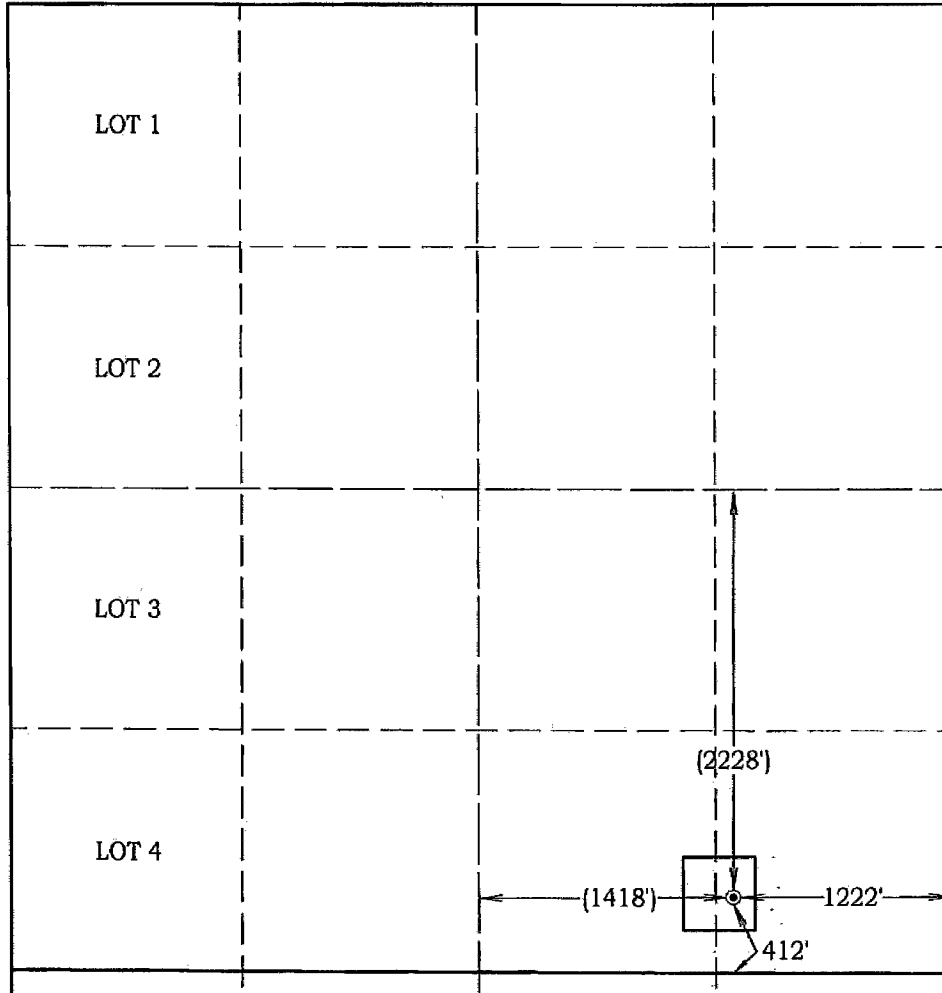
FOR COMMISSION USE ONLY
Status: Accepted
1133627

Well Location Plat

M & M Land Surveying, Inc.

520 "E" Street NW. Ardmore, OK. 73401
 Office 580-226-0446 Mobile 580-221-4999 Fax 580-226-7158

Company Name: Newfield Exploration Mid-Continent, Inc. Lease Name: Parks #5H-31X
 Section 30 Township 3 North Range 3 West County Garvin Oklahoma
 Surface Location 412' FSL - 1222' FEL Elevation 1155' Good Location? Yes Topography Location fell on existing pad.



Scale: 1" = 1000'
 Invoice #15406
 Date 10/07/15
 Elevations of Proposed Pad Corners
 NW/C - N/A
 NE/C - N/A
 SE/C - N/A
 SW/C - N/A

Coordinates were derived from GPS RTK methods and are only accurate within ±10 feet

Location GPS NAD 27
 Oklahoma South
 Surface Location
 Latitude: 34.69669°
 Longitude: 97.54923°
 Y= 496,443'
 X = 2,135,496'

Location NAD 83
 Surface Location
 Latitude: 34.69677°
 Longitude: 97.54954°
 Y= 496,486'
 X = 2,103,900'

Best Accessibility to Location
From the North

Distance & Direction From From the intersection of SH. #76 North and the Stephens and Garvin County line, go .7 miles North on S.H. #76, then 4.1 miles East and North on a winding county Highway or Town road to the Northeast corner of section 30.

CERTIFICATE:

I, D. Harry McClintick, a Registered Land Surveyor in the state of Oklahoma, do hereby certify that the above described Well Location was surveyed and staked on the ground as shown.

[Signature]
 D. Harry McClintick, R.P.L.S. # 1367, CA # 3093

This location has been staked according to the best official survey records available to us, but its accuracy is not guaranteed. Please review this plat and notify us immediately of any discrepancy.

The distances shown in parenthesis () are calculated distances based on the quarter section being 2640' and have not been measured.

