

Oklahoma Corporation Commission
 Oil & Gas Conservation Division
 Post Office Box 52000
 Oklahoma City, Oklahoma 73152-2000
 Rule 165: 10-3-25

Form 1002A

API No.: 35147207240001

Completion Report

Spud Date: September 10, 1976

OTC Prod. Unit No.: 147-001459

Drilling Finished Date: September 12, 1976

Amended

1st Prod Date:

Amend Reason: TERMINATED INJECTION / CHANGED TO PRODUCER

Completion Date: October 08, 1976

Recomplete Date: September 01, 2016

Drill Type: STRAIGHT HOLE

Well Name: EMMA CW-3

Purchaser/Measurer:

Location: WASHINGTON 18 29N 14E
 C SW SE
 660 FSL 660 FWL of 1/4 SEC
 Derrick Elevation: 817 Ground Elevation: 812

First Sales Date:

Operator: FINNEY KYLER A dba FINNEY OIL CO 23134
 PO BOX 87
 402685 W 100 RD
 WANN, OK 74083-0087

Completion Type	
X	Single Zone
	Multiple Zone
	Commingled

Location Exception
Order No
There are no Location Exception records to display.

Increased Density
Order No
There are no Increased Density records to display.

Casing and Cement							
Type	Size	Weight	Grade	Feet	PSI	SAX	Top of CMT
CONDUCTOR	8 1/4	21	NEW	50	75	10	SURFACE
PRODUCTION	4 1/2	10.5	NEW	1249	500	150	SURFACE

Liner								
Type	Size	Weight	Grade	Length	PSI	SAX	Top Depth	Bottom Depth
There are no Liner records to display.								

Total Depth: 1250

Packer	
Depth	Brand & Type
There are no Packer records to display.	

Plug	
Depth	Plug Type
There are no Plug records to display.	

Initial Test Data										
Test Date	Formation	Oil BBL/Day	Oil-Gravity (API)	Gas MCF/Day	Gas-Oil Ratio Cu FT/BBL	Water BBL/Day	Pumpin or Flowing	Initial Shut-In Pressure	Choke Size	Flow Tubing Pressure
Sep 01, 2016	BARTLESVILLE	1	34			100	PUMPING			

Completion and Test Data by Producing Formation										
Formation Name: BARTLESVILLE			Code: 404BRVL			Class: OIL				
Spacing Orders				Perforated Intervals						
Order No		Unit Size		From			To			
There are no Spacing Order records to display.				1188			1198			
Acid Volumes				Fracture Treatments						
200 GALLONS				1,000 POUNDS FRAC SAND						

Formation	Top
ALTAMONT LIME	587
PINK LIME	696
OSWEGO LIME	841
BARTLESVILLE SAND	1182

Were open hole logs run? No
Date last log run: September 20, 1976

Were unusual drilling circumstances encountered? No
Explanation:

Other Remarks
THIS WELL WAS COMPLETED AS AN INJECTION WELL IN 1976. WATER WAS INJECTED AT DEPTHS 1,188' - 1,198'. IT IS NO LONGER USED AS AN INJECTION WELL. IT IS BEING PRODUCED FOR OIL FROM THE SAME DEPTHS OF 1,188' - 1,198'. NO OTHER PERFORATIONS EXIST IN THIS WELL. NO OTHER FORMATIONS HAVE BEEN COMPLETED IN THIS WELL.

FOR COMMISSION USE ONLY	
Status: Accepted	1135043

RECEIVED

Form 1002A Rev. 2009

NOV 10 2016

OKLAHOMA CORPORATION COMMISSION

API NO. 14720724
OTC PROD. UNIT NO. 14700459

PLEASE TYPE OR USE BLACK INK ONLY
NOTE:

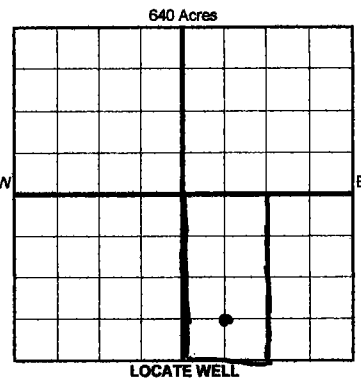
Attach copy of original 1002A if recompletion or reentry.

OKLAHOMA CORPORATION COMMISSION
Oil & Gas Conservation Division
Post Office Box 52000
Oklahoma City, Oklahoma 73152-2000
Rule 165:10-3-25

ORIGINAL
 AMENDED (Reason) Terminated injection/changed to producer COMPLETION REPORT

TYPE OF DRILLING OPERATION
 STRAIGHT HOLE DIRECTIONAL HOLE HORIZONTAL HOLE
 SERVICE WELL

SPUD DATE 9-10-76
DRLG FINISHED DATE 9-12-76



DATE OF WELL COMPLETION 10-8-76
1st PROD DATE (9-1-16)
RECOMP DATE
COUNTY Washington SEC 18 TWP 29N RGE 14E
LEASE NAME Emma
WELL NO. CW-3
1/4 C 1/4 SW 1/4 SE 1/4 FSL OF 1/4 SEC 660 FWL OF 1/4 SEC 660
ELEVATIO N Derrick 817 Ground 812 Latitude (if known) Longitude (if known)
OPERATOR NAME Finney Oil Company OTC/OCC OPERATOR NO. 23134
ADDRESS 402685 W. 100 Rd.
CITY Wann STATE OK ZIP 74083

COMPLETION TYPE
 SINGLE ZONE
 MULTIPLE ZONE
Application Date
 COMMINGLED
Application Date
LOCATION
EXCEPTION ORDER
INCREASED DENSITY
ORDER NO.

CASING & CEMENT (Form 1002C must be attached)

TYPE	SIZE	WEIGHT	GRADE	FEET	PSI	SAX	TOP OF CMT
CONDUCTOR							
SURFACE	8 1/4	21	New	50	75	10	surface
INTERMEDIATE							
PRODUCTION	4 1/2	10.5	New	1249	500	150	surface
LINER							
TOTAL DEPTH							1250

PACKER @ _____ BRAND & TYPE _____ PLUG @ _____ TYPE _____ PLUG @ _____ TYPE _____
PACKER @ _____ BRAND & TYPE _____ PLUG @ _____ TYPE _____ PLUG @ _____ TYPE _____

COMPLETION & TEST DATA BY PRODUCING FORMATION 404 BRVL

FORMATION	Bartlesville						
SPACING & SPACING ORDER NUMBER	None						
CLASS: Oil, Gas, Dry, Inj, Disp, Comm Disp, Svc	Oil						
PERFORATED INTERVALS	1188-1198						
ACID/VOLUME	200 gal						
FRACTURE TREATMENT (Fluids/Prop Amounts)	#1000 Fax Sand						

Min Gas Allowable (165:10-17-7) OR Gas Purchaser/Measurer First Sales Date
 Oil Allowable (165:10-13-3)

INITIAL TEST DATA

INITIAL TEST DATE	9-1-16						
OIL-BBL/DAY	1 BBL						
OIL-GRAVITY (API)	34						
GAS-MCF/DAY							
GAS-OIL RATIO CU FT/BBL							
WATER-BBL/DAY	100						
PUMPING OR FLOWING	Pumping						
INITIAL SHUT-IN PRESSURE							
CHOKE SIZE							
FLOW TUBING PRESSURE							

AS SUBMITTED

A record of the formations drilled through, and pertinent remarks are presented on the reverse. I declare that I have knowledge of the contents of this report and am authorized by my organization to make this report, which was prepared by me or under my supervision and direction, with the data and facts stated herein to be true, correct, and complete to the best of my knowledge and belief.

Kyle Finney SIGNATURE
402685 W. 100 Rd ADDRESS
Wann CITY
OK STATE
74083 ZIP

Kyler Finney NAME (PRINT OR TYPE)
11-7-16 DATE
(918) 440-8878 PHONE NUMBER
kfinney@finneyoilco.com EMAIL ADDRESS

PLEASE TYPE OR USE BLACK INK ONLY
FORMATION RECORD

Give formation names and tops, if available, or descriptions and thickness of formations drilled through. Show intervals cored or drillstem tested.

LEASE NAME Emma WELL NO. CW-3

NAMES OF FORMATIONS	TOP
Altamont Lime	587
Pink Lime	696
Oswego Lime	841
Bartlesville Sand	1182

FOR COMMISSION USE ONLY

ITD on file YES NO

APPROVED _____ DISAPPROVED _____

2) Reject Codes _____

Were open hole logs run? yes no

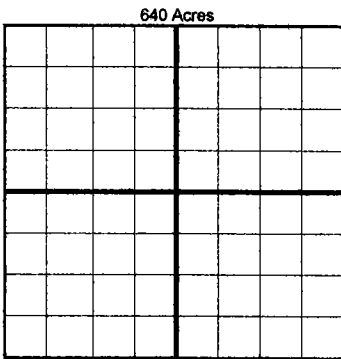
Date Last log was run 9-20-76

Was CO₂ encountered? yes no at what depths? _____

Was H₂S encountered? yes no at what depths? _____

Were unusual drilling circumstances encountered? yes no
If yes, briefly explain below _____

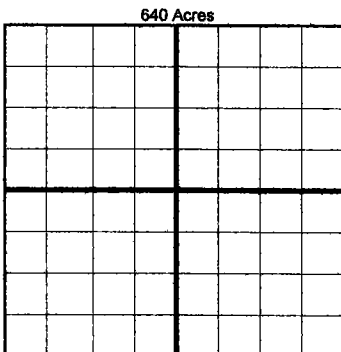
Other remarks: This well was completed as an injection well in 1976. Water was injected at depths 1188-1198. It is no longer used as an injection well. It is being produced for oil from the same depths of 1188-1198. No other perforations exist in this well. No other formations have been completed in this well.



If more than three drainholes are proposed, attach a separate sheet indicating the necessary information.

Direction must be stated in degrees azimuth. Please note, the horizontal drainhole and its end point must be located within the boundaries of the lease or spacing unit.

Directional surveys are required for all drainholes and directional wells.



BOTTOM HOLE LOCATION FOR DIRECTIONAL HOLE

SEC	TWP	RGE	COUNTY
Spot Location			
1/4	1/4	1/4	1/4
Measured Total Depth		True Vertical Depth	BHL From Lease, Unit, or Property Line:

BOTTOM HOLE LOCATION FOR HORIZONTAL HOLE: (LATERALS)

LATERAL #1

SEC	TWP	RGE	COUNTY
Spot Location			
1/4	1/4	1/4	1/4
Depth of Deviation	Radius of Turn	Direction	Total Length
Measured Total Depth		True Vertical Depth	BHL From Lease, Unit, or Property Line:

LATERAL #2

SEC	TWP	RGE	COUNTY
Spot Location			
1/4	1/4	1/4	1/4
Depth of Deviation	Radius of Turn	Direction	Total Length
Measured Total Depth		True Vertical Depth	BHL From Lease, Unit, or Property Line:

LATERAL #3

SEC	TWP	RGE	COUNTY
Spot Location			
1/4	1/4	1/4	1/4
Depth of Deviation	Radius of Turn	Direction	Total Length
Measured Total Depth		True Vertical Depth	BHL From Lease, Unit, or Property Line: