

Oklahoma Corporation Commission  
Oil & Gas Conservation Division  
Post Office Box 52000  
Oklahoma City, Oklahoma 73152-2000  
Rule 165: 10-3-25

Form 1002A

API No.: 35019261820000

**Completion Report**

Spud Date: September 04, 2015

OTC Prod. Unit No.: 019-218287

Drilling Finished Date: November 08, 2015

1st Prod Date: January 26, 2017

Completion Date: January 26, 2017

**Drill Type: HORIZONTAL HOLE**

Min Gas Allowable: Yes

Well Name: PAGE 5-15H10

Purchaser/Measurer: CROSS TIMBERS ENERGY

Location: CARTER 15 4S 3E  
SW SW NE NE  
1080 FNL 1190 FEL of 1/4 SEC  
Derrick Elevation: 0 Ground Elevation: 714

First Sales Date: 01/26/2017

Operator: XTO ENERGY INC 21003

810 HOUSTON ST  
FORT WORTH, TX 76102-6203

Completion Type	
X	Single Zone
	Multiple Zone
	Commingled

Location Exception	
Order No	
661617	

Increased Density	
Order No	
643853	

Casing and Cement							
Type	Size	Weight	Grade	Feet	PSI	SAX	Top of CMT
CONDUCTOR	20	104	J-55	103			SURFACE
SURFACE	9 5/8	36	J-55	2003		520	SURFACE
PRODUCTION	5 1/2	23	P-110	17970		1955	8690

Liner								
Type	Size	Weight	Grade	Length	PSI	SAX	Top Depth	Bottom Depth
There are no Liner records to display.								

**Total Depth: 17970**

Packer	
Depth	Brand & Type
There are no Packer records to display.	

Plug	
Depth	Plug Type
There are no Plug records to display.	

Initial Test Data

Test Date	Formation	Oil BBL/Day	Oil-Gravity (API)	Gas MCF/Day	Gas-Oil Ratio Cu FT/BBL	Water BBL/Day	Pumpin or Flowing	Initial Shut-In Pressure	Choke Size	Flow Tubing Pressure
Feb 14, 2017	WOODFORD	300	51	1373	4576	2063	FLOWING	3200	22	2150

**Completion and Test Data by Producing Formation**

Formation Name: WOODFORD

Code: 319WDFD

Class: OIL

**Spacing Orders**

Order No	Unit Size
262751	640

**Perforated Intervals**

From	To
12850	17825

**Acid Volumes**

78,624 GALLONS

**Fracture Treatments**

40 STAGES - 380,450 BTW, 1,235,880 POUNDS 100 MESH, 8,212,860 POUNDS 40/70

Formation	Top
WOODFORD	12691

Were open hole logs run? No

Date last log run:

Were unusual drilling circumstances encountered? No

Explanation:

**Other Remarks**

IRREGULAR SECTION

**Lateral Holes**

Sec: 10 TWP: 4S RGE: 3E County: CARTER

NW NW NE NE

44 FNL 1015 FEL of 1/4 SEC

Depth of Deviation: 12050 Radius of Turn: 583 Direction: 1 Total Length: 5005

Measured Total Depth: 17970 True Vertical Depth: 11539 End Pt. Location From Release, Unit or Property Line: 44

**FOR COMMISSION USE ONLY**

1136044

Status: Accepted

RECEIVED

Form 1002A Rev. 2009

FEB 22 2017

OKLAHOMA CORPORATION COMMISSION

API NO. 019-26182
OTC PROD. UNIT NO. 019-218287

PLEASE TYPE OR USE BLACK INK ONLY
NOTE:

Attach copy of original 1002A if recompletion or reentry.

OKLAHOMA CORPORATION COMMISSION
Oil & Gas Conservation Division
Post Office Box 52000
Oklahoma City, Oklahoma 73152-2000
Rule 165:10-3-25

ORIGINAL
AMENDED (Reason)

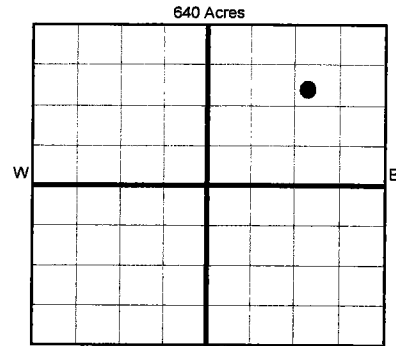
COMPLETION REPORT

TYPE OF DRILLING OPERATION

STRAIGHT HOLE
DIRECTIONAL HOLE
HORIZONTAL HOLE

If directional or horizontal, see reverse for bottom hole location.

Form with fields: COUNTY (Carter), SEC (15), TWP (4S), RGE (3E), LEASE NAME (Page), WELL NO. (5-15H10), SPUD DATE (9/4/2015), DATE OF WELL COMPLETION (1/26/2017), DATE OF 1st PROD DATE (1/26/2017), RECOMP DATE, OPERATOR NAME (XTO Energy Inc.), ADDRESS (210 Park Avenue, Suite 2350), CITY (Oklahoma City), STATE (Oklahoma), ZIP (73102)



LOCATE WELL

COMPLETION TYPE

Form with fields: SINGLE ZONE (checked), MULTIPLE ZONE, COMMINGLED, LOCATION (66167FD, 643782), EXCEPTION ORDER NO. (643853)

CASING & CEMENT (Form 1002C must be attached)

Table with columns: TYPE, SIZE, WEIGHT, GRADE, FEET, PSI, SAX, TOP OF CMT. Rows include CONDUCTOR, SURFACE, INTERMEDIATE, PRODUCTION, LINER.

PACKER @ BRAND & TYPE PLUG @ TYPE PLUG @ TYPE
PACKER @ BRAND & TYPE PLUG @ TYPE PLUG @ TYPE

TOTAL DEPTH 17,970

COMPLETION & TEST DATA BY PRODUCING FORMATION

Table with columns: FORMATION, SPACING & SPACING ORDER NUMBER, CLASS, PERFORATED INTERVALS, ACID/VOLUME, FRACTURE TREATMENT. Includes handwritten notes like '319WDFD' and 'Reported to Frac Focus'.

Min Gas Allowable (165:10-17-7)

Gas Purchaser/Measurer Cross Timbers Energy
First Sales Date 1/26/2017

INITIAL TEST DATA

Table with columns: INITIAL TEST DATE, OIL-BBL/DAY, OIL-GRAVITY (API), GAS-MCF/DAY, GAS-OIL RATIO CU FT/BBL, WATER-BBL/DAY, PUMPING OR FLOWING, INITIAL SHUT-IN PRESSURE, CHOKE SIZE, FLOW TUBING PRESSURE.

AS SUBMITTED

A record of the formations drilled through, and pertinent remarks are presented on the reverse. I declare that I have knowledge of the contents of this report and am authorized by my organization to make this report, which was prepared by me or under my supervision and direction, with the data and facts stated herein to be true, correct, and complete to the best of my knowledge and belief.

Signature: Debbie Waggoner
NAME (PRINT OR TYPE): Debbie Waggoner
DATE: 2/17/2017
PHONE NUMBER: 405-319-3243
ADDRESS: 210 Park Avenue, Suite 2350
CITY: Oklahoma City
STATE: Ok
ZIP: 73102
EMAIL ADDRESS: debbie\_waggoner@xtoenergy.com

PLEASE TYPE OR USE BLACK INK ONLY  
FORMATION RECORD

Give formation names and tops, if available, or descriptions and thickness of formations drilled through. Show intervals cored or drillstem tested.

LEASE NAME \_\_\_\_\_ PAGE \_\_\_\_\_ WELL NO. 5-15H10

NAMES OF FORMATIONS	TOP
WOODFORD	12691' MD 12449' TVD

FOR COMMISSION USE ONLY

ITD on file  YES  NO

APPROVED \_\_\_\_\_ DISAPPROVED \_\_\_\_\_

2) Reject Codes

\_\_\_\_\_

\_\_\_\_\_

\_\_\_\_\_

\_\_\_\_\_

Were open hole logs run? \_\_\_\_\_ yes  no

Date Last log was run \_\_\_\_\_

Was CO<sub>2</sub> encountered? \_\_\_\_\_ yes  no at what depths? \_\_\_\_\_

Was H<sub>2</sub>S encountered? \_\_\_\_\_ yes  no at what depths? \_\_\_\_\_

Were unusual drilling circumstances encountered? \_\_\_\_\_ yes  no

If yes, briefly explain below

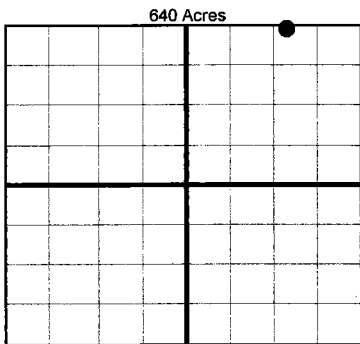
Other remarks: Irregular Section

\_\_\_\_\_

\_\_\_\_\_

\_\_\_\_\_

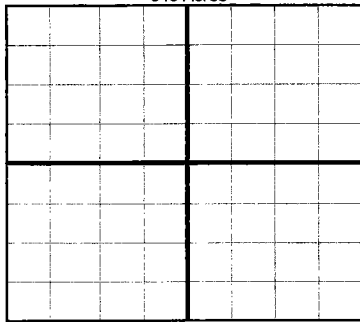
\_\_\_\_\_



If more than three drainholes are proposed, attach a separate sheet indicating the necessary information.

Direction must be stated in degrees azimuth. Please note, the horizontal drainhole and its end point must be located within the boundaries of the lease or spacing unit.

Directional surveys are required for all drainholes and directional wells.



BOTTOM HOLE LOCATION FOR DIRECTIONAL HOLE

SEC	TWP	RGE	COUNTY				
Spot Location	1/4	1/4	1/4	1/4	Feet From 1/4 Sec Lines	FNL	FEL
Measured Total Depth	True Vertical Depth		BHL From Lease, Unit, or Property Line:				

BOTTOM HOLE LOCATION FOR HORIZONTAL HOLE: (LATERALS)

LATERAL #1

SEC	TWP	RGE	COUNTY					
10	4S	3E	Carter					
Spot Location	NW 1/4	NW 1/4	NE 1/4	NE 1/4	Feet From 1/4 Sec Lines	FNL 44'	FEL 1015'	
Depth of Deviation	12,050'		Radius of Turn	582.5'	Direction	1.6°	Total Length	5005.0'
Measured Total Depth	17970'		True Vertical Depth	11539'		BHL From Lease, Unit, or Property Line: 44' FNL & 1015' FEL		

LATERAL #2

SEC	TWP	RGE	COUNTY			
Spot Location	1/4	1/4	1/4	Feet From 1/4 Sec Lines	FSL	FWL
Depth of Deviation	Radius of Turn		Direction	Total Length		
Measured Total Depth	True Vertical Depth		BHL From Lease, Unit, or Property Line:			

LATERAL #3

SEC	TWP	RGE	COUNTY			
Spot Location	1/4	1/4	1/4	Feet From 1/4 Sec Lines	FSL	FWL
Depth of Deviation	Radius of Turn		Direction	Total Length		
Measured Total Depth	True Vertical Depth		BHL From Lease, Unit, or Property Line:			