

Oklahoma Corporation Commission  
Oil & Gas Conservation Division  
Post Office Box 52000  
Oklahoma City, Oklahoma 73152-2000  
Rule 165: 10-3-25

Form 1002A

API No.: 35043234820000

**Completion Report**

Spud Date: November 05, 2016

OTC Prod. Unit No.: 043-218169

Drilling Finished Date: December 05, 2016

1st Prod Date: January 05, 2017

Completion Date: January 01, 2017

**Drill Type: HORIZONTAL HOLE**

Well Name: CHERRY MASH 8-1H

Purchaser/Measurer: ENABLE

Location: DEWEY 8 16N 15W  
N2 SE SW SE  
437 FSL 1650 FEL of 1/4 SEC  
Derrick Elevation: 23 Ground Elevation: 1781

First Sales Date: 01/11/2017

Operator: CARRERA ENERGY LLC 23514  
PO BOX 5036  
901 W MISSOURI AVE  
MIDLAND, TX 79704-5036

Completion Type	
X	Single Zone
	Multiple Zone
	Commingled

Location Exception	
Order No	
655592	

Increased Density	
Order No	
There are no Increased Density records to display.	

Casing and Cement							
Type	Size	Weight	Grade	Feet	PSI	SAX	Top of CMT
CONDUCTOR	16	65	H-40	123			SURFACE
SURFACE	9.625	36	J-55	1515		480	SURFACE
PRODUCTION	7.0	29	HCP	12442		1055	7624

Liner								
Type	Size	Weight	Grade	Length	PSI	SAX	Top Depth	Bottom Depth
LINER	4.5	11.6	HCP	5453	0	420	11357	16810

**Total Depth: 16816**

Packer	
Depth	Brand & Type
11520	ARROW AS1X

Plug	
Depth	Plug Type
There are no Plug records to display.	

Initial Test Data
-------------------

Test Date	Formation	Oil BBL/Day	Oil-Gravity (API)	Gas MCF/Day	Gas-Oil Ratio Cu FT/BBL	Water BBL/Day	Pumpin or Flowing	Initial Shut-In Pressure	Choke Size	Flow Tubing Pressure
Jan 12, 2017	MISSISSIPPI LIME	63	52.9	4377	69476	120	FLOWING	5000	11/64	4680
Feb 22, 2017	MISSISSIPPI LIME	83	54.99	6259	75410	511	FLOWING		15/64	3850

#### Completion and Test Data by Producing Formation

Formation Name: MISSISSIPPI LIME

Code: 351MSSLM

Class: GAS

#### Spacing Orders

Order No	Unit Size
93523	640
585396	640

#### Perforated Intervals

From	To
12469	16697

#### Acid Volumes

1,495 BARRELS 15% HCL

#### Fracture Treatments

305,153 BARRELS SLICK WATER, 2,264,760 POUNDS  
100 MESH, 5,884,400 POUNDS 40/70

Formation	Top
HEEBNER HS	7020
DOUGLAS SAND	7050
TONKAWA HS	7475
TONKAWA SAND	7702
AVANT	8106
COTTAGE GROVE	8228
HOGSHOOTER	8436
CHECKERBOARD	8740
CLEVELAND	8830
BIG LIME	8915
OSWEGO	9156
PINK LIME	9502
RED FORK	9628
INOLA	9750
ATOKA	10000
MERAMEC	10081
CHESTER	10983

Were open hole logs run? No

Date last log run:

Were unusual drilling circumstances encountered? No

Explanation:

#### Other Remarks

PER OPERATOR, PRODUCES SOME H2S, SAW NONE ON DRILLING. OCC - THIS DOCUMENT IS ACCEPTED BASED ON THE DATA SUBMITTED  
THE FINAL LOCATION EXCEPTION HAS NOT BEEN ISSUED.

#### Lateral Holes

Sec: 8 TWP: 16N RGE: 15W County: DEWEY

NE NW NW NE

165 FNL 1981 FWL of 1/4 SEC

Depth of Deviation: 11478 Radius of Turn: 482 Direction: 356 Total Length: 4686

Measured Total Depth: 16816 True Vertical Depth: 12094 End Pt. Location From Release, Unit or Property Line: 165

## FOR COMMISSION USE ONLY

1136051

Status: Accepted

# RECEIVED

Form 1002A  
Rev. 2009

API NO. **35 043 23482**  
OTC PROD. UNIT NO. **043218169**

PLEASE TYPE OR USE BLACK INK ONLY  
NOTE:

Attach copy of original 1002A  
if recompletion or reentry.

OKLAHOMA CORPORATION COMMISSION  
Oil & Gas Conservation Division  
Post Office Box 52000  
Oklahoma City, Oklahoma 73152-2000  
Rule 165:10-3-25

FEB 27 2017

OKLAHOMA CORPORATION  
COMMISSION

☒ ORIGINAL  
☐ AMENDED (Reason) \_\_\_\_\_

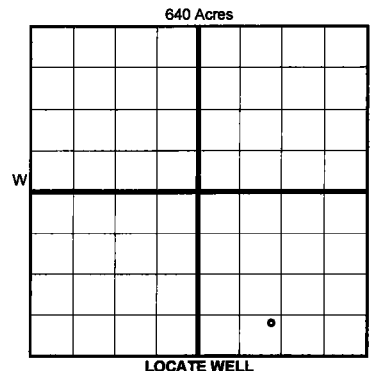
### COMPLETION REPORT

#### TYPE OF DRILLING OPERATION

☐ STRAIGHT HOLE ☐ DIRECTIONAL HOLE ☒ HORIZONTAL HOLE  
☐ SERVICE WELL

If directional or horizontal, see reverse for bottom hole location.

COUNTY <b>Dewey</b>	SEC <b>8</b>	TWP <b>16N</b>	RGE <b>15W</b>	SPUD DATE <b>11-5-2016</b>
LEASE NAME <b>Cherry Mash</b>				DRLG FINISHED DATE <b>12-5-2016</b>
WELL NO. <b>8-1H</b>				DATE OF WELL COMPLETION <b>1-1-2017</b>
N2 1/4 SE 1/4 SW 1/4 SE 1/4 FSL OF 1/4 SEC <b>437</b> (FEET) OF 1/4 SEC <b>1650</b>				1st PROD DATE <b>1-5-2017</b>
ELEVATIO N Derrick <b>23</b> Ground <b>1781</b>				RECOMP DATE
Latitude (if known) <b>35.870974801°N</b>				Longitude (if known) <b>98.814887596°W</b>
OPERATOR NAME <b>Carrera Energy, LLC</b>				OTC/OCC OPERATOR NO. <b>23514</b>
ADDRESS <b>901 Missouri</b>				
CITY <b>Midland,</b>		STATE <b>Texas</b>		ZIP <b>79701</b>



#### COMPLETION TYPE

<input checked="" type="checkbox"/> SINGLE ZONE
<input type="checkbox"/> MULTIPLE ZONE
Application Date
<input type="checkbox"/> COMMINGLED
Application Date
LOCATION EXCEPTION ORDER <b>655592 IO</b>
INCREASED DENSITY ORDER NO.

#### CASING & CEMENT (Form 1002C must be attached)

TYPE	SIZE	WEIGHT	GRADE	FEET	PSI	SAX	TOP OF CMT
CONDUCTOR	16	65	H-40	123			surface
SURFACE	9.625	36	J-55	1515		480	surface
INTERMEDIATE							
PRODUCTION	7.0	29	HCP	12442		1055	7624 CBL
LINER	4.5	11.6	HCP	11357-16810		420	11357 circ
						TOTAL DEPTH	16,816

PACKER @ **11,520** BRAND & TYPE **Atow AS1X** PLUG @ \_\_\_\_\_ TYPE \_\_\_\_\_  
PACKER @ \_\_\_\_\_ BRAND & TYPE \_\_\_\_\_ PLUG @ \_\_\_\_\_ TYPE \_\_\_\_\_

#### COMPLETION & TEST DATA BY PRODUCING FORMATION

FORMATION	<b>Mississippian Lime</b>								
SPACING & SPACING ORDER NUMBER	<b>640 ac_93523 &amp; 585396</b>								
CLASS: Oil, Gas, Dry, Inj, Disp, Comm Disp, Svc	<b>Gas</b>								
PERFORATED INTERVALS	<b>16,697-12,469</b>								
ACID/VOLUME	<b>15% HCL 1495 bbls</b>								
FRACTURE TREATMENT (Fluids/Prop Amounts)	<b>305,153 bbls slick wtr</b>								
	<b>2,264,760 lbs 100 msh</b>								
	<b>5,884,400 lbs 40/70</b>								

*Reported To FracFacts*

☒ Min Gas Allowable (165:10-17-7)  
OR  
☐ Oil Allowable (165:10-13-3)

Gas Purchaser/Measurer  
First Sales Date

Enable  
1-11-2017

#### INITIAL TEST DATA

INITIAL TEST DATE	<b>1-12-2017</b>	<b>2-22-2017</b>				
OIL-BBL/DAY	<b>63</b>	<b>83</b>				
OIL-GRAVITY ( API)	<b>52.9° @ 60°F</b>	<b>54.99° @ 60°F</b>				
GAS-MCF/DAY	<b>4377</b>	<b>6259</b>				
GAS-OIL RATIO CU FT/BBL	<b>69476 / 1</b>	<b>75.410 / 1</b>				
WATER-BBL/DAY	<b>120</b>	<b>511</b>				
PUMPING OR FLOWING	<b>Flowing</b>	<b>Flowing</b>				
INITIAL SHUT-IN PRESSURE	<b>5000 psi</b>					
CHOKE SIZE	<b>11/64</b>	<b>15/64</b>				
FLOW TUBING PRESSURE	<b>4680 psi</b>	<b>3850 psi</b>				

**AS SUBMITTED**

A record of the formations drilled through, and pertinent remarks are presented on the reverse. I declare that I have knowledge of the contents of this report and am authorized by my organization to make this report, which was prepared by me or under my supervision and direction, with the data and facts stated herein to be true, correct, and complete to the best of my knowledge and belief.

*Richard L. Wright*  
SIGNATURE  
701 Missouri  
ADDRESS  
Midland,  
CITY  
Texas 79701  
STATE  
ZIP  
2-23-2017 432 695 6970  
DATE  
PHONE NUMBER  
rwright@carreraenergy.com  
EMAIL ADDRESS

PLEASE TYPE OR USE BLACK INK ONLY  
FORMATION RECORD

Give formation names and tops, if available, or descriptions and thickness of formations drilled through. Show intervals cored or drillstem tested.

NAMES OF FORMATIONS	TOP
Heebner HS	7,020
Douglas Sand	7,050
Tonkawa HS	7,475
Tonkawa Sand	7,702
Avant	8,106
Cottage Grove	8,228
Hogshooter	8,436
Checkerboard	8,740
Cleveland	8,830
Big Lime	8,915
Oswego	9,156
Pink Lime	9,502
Red Fork	9,628
Inola	9,750
Atoka	10,000
Chester	10,983
Meramec	10,081

LEASE NAME Cherry Mash

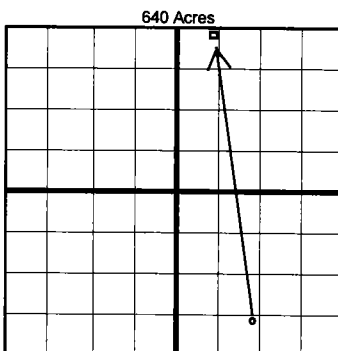
WELL NO. 8-1H

FOR COMMISSION USE ONLY	
ITD on file	<input type="checkbox"/> YES <input type="checkbox"/> NO
APPROVED	DISAPPROVED
2) Reject Codes	

Were open hole logs run?	yes <input type="checkbox"/> no <input checked="" type="checkbox"/>	
Date Last log was run		
Was CO <sub>2</sub> encountered?	yes <input type="checkbox"/> no <input checked="" type="checkbox"/>	at what depths? <u>Per Richard Wright</u>
Was H <sub>2</sub> S encountered?	yes <input type="checkbox"/> no <input checked="" type="checkbox"/>	at what depths? <u> </u>
Were unusual drilling circumstances encountered?	yes <input type="checkbox"/> no <input checked="" type="checkbox"/>	
If yes, briefly explain below		

Other remarks:

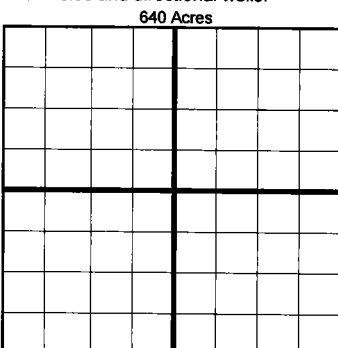
Per operator produces some H<sub>2</sub>S saw none on drilling.



If more than three drainholes are proposed, attach a separate sheet indicating the necessary information.

Direction must be stated in degrees azimuth. Please note, the horizontal drainhole and its end point must be located within the boundaries of the lease or spacing unit.

Directional surveys are required for all drainholes and directional wells.



BOTTOM HOLE LOCATION FOR DIRECTIONAL HOLE

SEC	TWP	RGE	COUNTY
Spot Location	1/4	1/4	1/4
Measured Total Depth	True Vertical Depth	BHL From Lease, Unit, or Property Line:	

BOTTOM HOLE LOCATION FOR HORIZONTAL HOLE: (LATERALS)

LATERAL #1			
SEC	TWP	RGE	COUNTY
8	16N	15W	Dewey
Spot Location	NE 1/4	NW 1/4	NE 1/4
Depth of Deviation	11,478	Radius of Turn	482' 10"
Measured Total Depth	16,816	True Vertical Depth	12,094 avg
Direction	355.89°	Total Length	4686.21'
BHL From Lease, Unit, or Property Line: 165.4' FNL & 1980.6 FEL			

LATERAL #2

SEC	TWP	RGE	COUNTY
Spot Location	1/4	1/4	1/4
Depth of Deviation		Radius of Turn	
Measured Total Depth		True Vertical Depth	
BHL From Lease, Unit, or Property Line:			

LATERAL #3

SEC	TWP	RGE	COUNTY
Spot Location	1/4	1/4	1/4
Depth of Deviation		Radius of Turn	
Measured Total Depth		True Vertical Depth	
BHL From Lease, Unit, or Property Line:			

