

Oklahoma Corporation Commission
Oil & Gas Conservation Division
Post Office Box 52000
Oklahoma City, Oklahoma 73152-2000
Rule 165: 10-3-25

Form 1002A

API No.: 35093250340001

Completion Report

Spud Date: August 30, 2016

OTC Prod. Unit No.: 093-218183

Drilling Finished Date: September 28, 2016

1st Prod Date: December 15, 2016

Completion Date: November 02, 2016

Drill Type: HORIZONTAL HOLE

Min Gas Allowable: Yes

Well Name: SNICKERS 17-1H

Purchaser/Measurer: TARGA MIDSTREAM

Location: MAJOR 17 20N 16W
S2 S2 SE SW
165 FSL 1980 FWL of 1/4 SEC
Derrick Elevation: 23 Ground Elevation: 1697

First Sales Date: 12/30/2016

Operator: CARRERA ENERGY LLC 23514
PO BOX 5036
901 W MISSOURI AVE
MIDLAND, TX 79704-5036

Completion Type		Location Exception		Increased Density	
X	Single Zone	Order No		Order No	
	Multiple Zone	658767		There are no Increased Density records to display.	
	Commingled				

Casing and Cement							
Type	Size	Weight	Grade	Feet	PSI	SAX	Top of CMT
CONDUCTOR	16	65	H	123			SURFACE
SURFACE	9.625	36	J	710			SURFACE
PRODUCTION	9.0	29	HCP	9540		865	6168

Liner								
Type	Size	Weight	Grade	Length	PSI	SAX	Top Depth	Bottom Depth
LINER	4.5	11.6	HCP	5601	0	435	9314	14915

Total Depth: 14851

Packer		Plug	
Depth	Brand & Type	Depth	Plug Type
9314	ARROW AWSIII	14759	LDG COLLAR

Initial Test Data

Test Date	Formation	Oil BBL/Day	Oil-Gravity (API)	Gas MCF/Day	Gas-Oil Ratio Cu FT/BBL	Water BBL/Day	Pumpin or Flowing	Initial Shut-In Pressure	Choke Size	Flow Tubing Pressure
Dec 31, 2016	MISSISSIPPIAN (MERAMEC-OSAGE)	135	44.4	1609	11919	2525	JET PUMPING	3350	128/64	
Jan 26, 2017	MISSISSIPPIAN (MERAMEC-OSAGE)	176	44.4	1419	8062	2577	JET PUMPING	3350	128/64	

Completion and Test Data by Producing Formation

Formation Name: MISSISSIPPIAN(MERAMEC-OSAGE)

Code: 359MNMCO

Class: GAS

Spacing Orders

Order No	Unit Size
80607	640
142459	640

Perforated Intervals

From	To
10326	14740

Acid Volumes

686 BARRELS 15% HCL

Fracture Treatments

310,389 BARRELS LOAD, 2,319,080 POUNDS 100 MESH, 5,816,400 POUNDS 40/70 MESH
--

Formation	Top
COTTAGE GROVE	6942
BIG LIME	7445
OSWEGO	7487
CHESTER	8251
MERAMEC	9333
OSAGE MISSISSIPPI	9441

Were open hole logs run? No

Date last log run: October 21, 2016

Were unusual drilling circumstances encountered? No

Explanation:

Other Remarks

There are no Other Remarks.

Lateral Holes

Sec: 17 TWP: 20N RGE: 16W County: MAJOR

NE NW NE NW

187 FNL 1955 FWL of 1/4 SEC

Depth of Deviation: 9581 Radius of Turn: 474 Direction: 359 Total Length: 4906

Measured Total Depth: 14851 True Vertical Depth: 10225 End Pt. Location From Release, Unit or Property Line: 187

FOR COMMISSION USE ONLY

1136052

Status: Accepted

SIGNATURE		NAME (PRINT OR TYPE)		DATE	PHONE NUMBER
Richard L. Wright		Richard L. Wright		2-16-2017	432 695 6970
ADDRESS		CITY	STATE	ZIP	EMAIL ADDRESS
901 Missouri,		Midland,	Texas	79701	rwright@carreraenergy.com

PLEASE TYPE OR USE BLACK INK ONLY
FORMATION RECORD

Give formation names and tops, if available, or descriptions and thickness of formations drilled through. Show intervals cored or drillstem tested.

NAMES OF FORMATIONS	TOP
Cottage Grove	6942
Big Lime	7445
Oswego	7487
Chester	8251
Meramec	9333
Osage Miss	9441

LEASE NAME Snickers

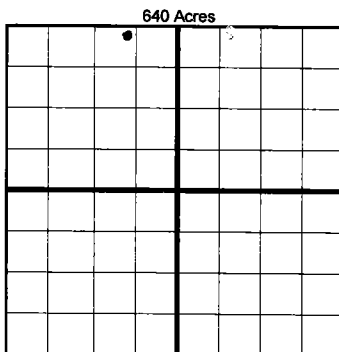
WELL NO. 17-1H

FOR COMMISSION USE ONLY	
ITD on file <input type="checkbox"/> YES <input type="checkbox"/> NO	
APPROVED _____	DISAPPROVED _____
2) Reject Codes	

Were open hole logs run?	yes <input type="checkbox"/> no <input checked="" type="checkbox"/>
Date Last log was run	<u>10-21-2016</u>
Was CO ₂ encountered?	yes <input type="checkbox"/> no <input checked="" type="checkbox"/> at what depths? _____
Was H ₂ S encountered?	yes <input type="checkbox"/> no <input checked="" type="checkbox"/> at what depths? _____
Were unusual drilling circumstances encountered?	yes <input type="checkbox"/> no <input checked="" type="checkbox"/>
If yes, briefly explain below	

Per Richard Wright

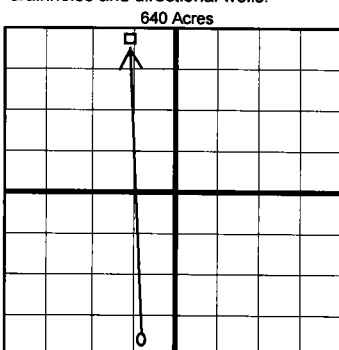
Other remarks:



If more than three drainholes are proposed, attach a separate sheet indicating the necessary information.

Direction must be stated in degrees azimuth.
Please note, the horizontal drainhole and its end point must be located within the boundaries of the lease or spacing unit.

Directional surveys are required for all drainholes and directional wells.



BOTTOM HOLE LOCATION FOR DIRECTIONAL HOLE

SEC	TWP	RGE	COUNTY
17	20N	16W	Major
Spot Location		Feet From 1/4 Sec Lines	
NE 1/4	NW 1/4	NE 1/4	NW 1/4
Measured Total Depth		True Vertical Depth	
14,851		10,225	
		BHL From Lease, Unit, or Property Line:	
		187 FNL & 1954 FWL	

BOTTOM HOLE LOCATION FOR HORIZONTAL HOLE: (LATERALS)

Per LE Exhibit's

SEC	TWP	RGE	COUNTY
17	20N	16W	Major
Spot Location		Feet From 1/4 Sec Lines	
NE 1/4	NW 1/4	NE 1/4	NW 1/4
Depth of Deviation		Radius of Turn	
9,581		474 10° build	
Measured Total Depth		True Vertical Depth	
14,851		10,225	
		BHL From Lease, Unit, or Property Line:	
		187 FNL & 1954 FWL	

LATERAL #2

SEC	TWP	RGE	COUNTY
17	20N	16W	Major
Spot Location		Feet From 1/4 Sec Lines	
NE 1/4	NW 1/4	NE 1/4	NW 1/4
Depth of Deviation		Radius of Turn	
Measured Total Depth		True Vertical Depth	
		BHL From Lease, Unit, or Property Line:	

LATERAL #3

SEC	TWP	RGE	COUNTY
17	20N	16W	Major
Spot Location		Feet From 1/4 Sec Lines	
NE 1/4	NW 1/4	NE 1/4	NW 1/4
Depth of Deviation		Radius of Turn	
Measured Total Depth		True Vertical Depth	
		BHL From Lease, Unit, or Property Line:	

EMAIL ADDRESS _____