

Oklahoma Corporation Commission
Oil & Gas Conservation Division
Post Office Box 52000
Oklahoma City, Oklahoma 73152-2000
Rule 165: 10-3-25

Form 1002A

API No.: 35153235910000

Completion Report

Spud Date: November 23, 2016

OTC Prod. Unit No.: 153-218329

Drilling Finished Date: December 31, 2016

1st Prod Date: February 23, 2017

Completion Date: January 21, 2017

Drill Type: HORIZONTAL HOLE

Min Gas Allowable: Yes

Well Name: MARILYN 14-20-20 1H

Purchaser/Measurer: ENABLE

Location: WOODWARD 23 20N 20W
NW NE NE NW
200 FNL 2025 FWL of 1/4 SEC
Latitude: 36.2024164 Longitude: -99.30358015
Derrick Elevation: 2166 Ground Elevation: 2141

First Sales Date: 02/23/2017

Operator: TAPSTONE ENERGY LLC 23467

100 E MAIN ST
OKLAHOMA CITY, OK 73104-2509

Completion Type	
X	Single Zone
	Multiple Zone
	Commingled

Location Exception	
Order No	
659008	

Increased Density	
Order No	
There are no Increased Density records to display.	

Casing and Cement							
Type	Size	Weight	Grade	Feet	PSI	SAX	Top of CMT
SURFACE	9 5/8	36	J-55	1480	1000	691	SURFACE
PRODUCTION	7	26	L-80	11108	2550	280	6300

Liner								
Type	Size	Weight	Grade	Length	PSI	SAX	Top Depth	Bottom Depth
LINER	4 1/2	15.1	L-80	6101	9500	100	10809	16910

Total Depth: 16910

Packer	
Depth	Brand & Type
10763	BAKER HORNET

Plug	
Depth	Plug Type
There are no Plug records to display.	

Initial Test Data

Test Date	Formation	Oil BBL/Day	Oil-Gravity (API)	Gas MCF/Day	Gas-Oil Ratio Cu FT/BBL	Water BBL/Day	Pumpin or Flowing	Initial Shut-In Pressure	Choke Size	Flow Tubing Pressure
Feb 27, 2017	MISSISSIPPIAN	249		2322	9325	2608	FLOWING		36/64	1275

Completion and Test Data by Producing Formation

Formation Name: MISSISSIPPIAN

Code: 359MSSP

Class: OIL

Spacing Orders

Order No	Unit Size
658420	640

Perforated Intervals

From	To
12019	12170

Acid Volumes

27,972 GALLONS 15% HCL

Fracture Treatments

204,363 BARRELS, 6,016,305 POUNDS PROPPANT

Formation	Top
BASE HEEBNER	6482
TONKAWA	6930
COTTAGE GROVE	7400
HOGSHOOTER	7642
OSWEGO LIMESTONE	8040
ATOKA	8758
MISSISSIPPIAN	9502

Were open hole logs run? Yes

Date last log run: December 02, 2016

Was H2S Encountered? Yes

Depth Encountered: 11693

Were unusual drilling circumstances encountered? No

Explanation:

Other Remarks

THE WELL WAS COMPLETED USING OPEN HOLE PACKERS WITH NO CEMENT BEHIND THE LINER FROM 12,170' - 16,910'. THE HEEL OF THE LATERAL WAS CEMENTED FROM 10,809' - 12,170'. THE CEMENTED SECTION WAS PERFORATED AND COMPLETED FROM 12,019' - 12,170'. OCC - THIS DOCUMENT IS ACCEPTED BASED ON THE DATA SUBMITTED THE FINAL LOCATION EXCEPTION HAS NOT BEEN ISSUED.

Lateral Holes

Sec: 14 TWP: 20N RGE: 20W County: WOODWARD

NW NE NE NW

198 FNL 2251 FWL of 1/4 SEC

Depth of Deviation: 6382 Radius of Turn: 850 Direction: 7 Total Length: 4668

Measured Total Depth: 16910 True Vertical Depth: 11694 End Pt. Location From Release, Unit or Property Line: 198

FOR COMMISSION USE ONLY

1136053

Status: Accepted

RECEIVED

Form 1002A Rev. 2009

FEB 27 2017

OKLAHOMA CORPORATION COMMISSION

API NO. 35-153-23591
OTC PROD. UNIT NO. 153218329

PLEASE TYPE OR USE BLACK INK ONLY
NOTE:

Attach copy of original 1002A if recompletion or reentry.

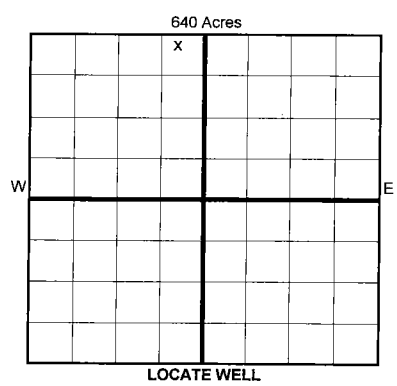
OKLAHOMA CORPORATION COMMISSION
Oil & Gas Conservation Division
Post Office Box 52000
Oklahoma City, Oklahoma 73152-2000
Rule 165:10-3-25

ORIGINAL
 AMENDED (Reason)

COMPLETION REPORT

TYPE OF DRILLING OPERATION
 STRAIGHT HOLE DIRECTIONAL HOLE HORIZONTAL HOLE
 SERVICE WELL

SPUD DATE 11/23/2016
DRLG FINISHED DATE 12/31/2016
DATE OF WELL COMPLETION 1/21/2017
1st PROD DATE 2/23/2017
RECOMP DATE
WELL NO. 1H
FNL OF 1/4 SEC 200'
FWL OF 1/4 SEC 2025'
Longitude (if known) -99.30358015



WOODWARD COUNTY SEC 23 TWP 20N RGE 20W
LEASE NAME MARILYN 14-20-20
ELEVATION N Derrick 2,166' Ground 2,141'
Latitude (if known) 36.2024164
OPERATOR NAME Tapstone Energy, LLC
ADDRESS PO Box 1608
CITY Oklahoma City STATE OK ZIP 73101-1608

COMPLETION TYPE
 SINGLE ZONE
 MULTIPLE ZONE
Application Date
 COMMINGLED
Application Date
LOCATION EXCEPTION ORDER 659008 (Interim)
INCREASED DENSITY ORDER NO.

CASING & CEMENT (Form 1002C must be attached)

TYPE	SIZE	WEIGHT	GRADE	FEET	PSI	SAX	TOP OF CMT
CONDUCTOR							
SURFACE	9 5/8"	36	J-55	1,480'	1000	691	SURFACE
INTERMEDIATE	7"	26	L-80	11,108'	2,550	280	6,300'(EST)
PRODUCTION							
LINER	4 1/2"	15.1	L-80	10,809'-16,910'	9,500	100	10,809'
							16,910'

*see remarks

PACKER @ 10,763' BRAND & TYPE BKR HORNE PLUG @ TYPE PLUG @ TYPE
PACKER @ BRAND & TYPE PLUG @ TYPE PLUG @ TYPE

COMPLETION & TEST DATA BY PRODUCING FORMATION 359MSSP

FORMATION	MISSISSIPPIAN
SPACING & SPACING ORDER NUMBER	640 ac - 658420
CLASS: Oil, Gas, Dry, Inj, Disp, Comm Disp, Svc	Oil
PERFORATED INTERVALS	12,019'-16,910' 12170 Openhole see remarks
ACID/VOLUME	27,972 gal-15% HCL
FRACTURE TREATMENT (Fluids/Prop Amounts)	204,363 Bbls 6,016,305# Prop

Reported to Frac Focus

Min Gas Allowable (165:10-17-7) OR Gas Purchaser/Measurer ENABLE
 Oil Allowable (165:10-13-3) First Sales Date 2/23/2017

INITIAL TEST DATA

INITIAL TEST DATE	2/27/2017
OIL-BBL/DAY	249
OIL-GRAVITY (API)	NA
GAS-MCF/DAY	2322
GAS-OIL RATIO CU FT/BBL	9325
WATER-BBL/DAY	2608
PUMPING OR FLOWING	FLOWING
INITIAL SHUT-IN PRESSURE	
CHOKE SIZE	36/64"
FLOW TUBING PRESSURE	1275

AS SUBMITTED

A record of the formations drilled through, and pertinent remarks are presented on the reverse. I declare that I have knowledge of the contents of this report and am authorized by my organization to make this report, which was prepared by me or under my supervision and direction, with the data and facts stated herein to be true, correct, and complete to the best of my knowledge and belief.

SIGNATURE: Bryan Rother
NAME (PRINT OR TYPE): Bryan Rother
DATE: 2/27/2017
PHONE NUMBER: 405-702-1600
ADDRESS: PO Box 1608
CITY: Oklahoma City STATE: OK ZIP: 73101-1608
EMAIL ADDRESS: brother@tapstoneenergy.com

PLEASE TYPE OR USE BLACK INK ONLY
FORMATION RECORD

Give formation names and tops, if available, or descriptions and thickness of formations drilled through. Show intervals cored or drillstem tested.

LEASE NAME MARILYN 14-20-20 WELL NO. 1H

NAMES OF FORMATIONS	TOP
BASE HEEBNER	6482'
TONKAWA	6930'
COTTAGE GROVE	7400'
HOGSHOOTER	7642'
OSWEGO LIMESTONE	8040'
ATOKA	8758'
MISSISSIPPIAN	9502'

FOR COMMISSION USE ONLY

ITD on file YES NO

APPROVED _____ DISAPPROVED _____

2) Reject Codes _____

Were open hole logs run? yes no

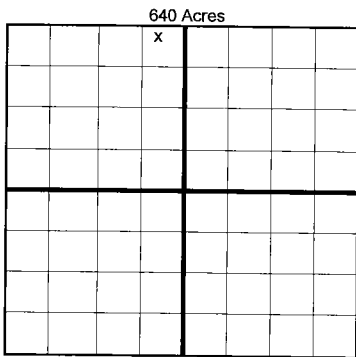
Date Last log was run 12/2/2016

Was CO₂ encountered? yes no at what depths? _____

Was H₂S encountered? yes no at what depths? 11,693'

Were unusual drilling circumstances encountered? yes no
If yes, briefly explain below _____

Other remarks: The well was completed using open hole packers with no cement behind the liner from 12,170-16,910'. The heel of the lateral was cemented from 10,809-12,170'. The cemented section was perforated and completed from 12,019-12,170'.



BOTTOM HOLE LOCATION FOR DIRECTIONAL HOLE

SEC	TWP	RGE	COUNTY				
Spot Location	1/4	1/4	1/4	1/4	Feet From 1/4 Sec Lines	FNL	FEL
Measured Total Depth	True Vertical Depth		BHL From Lease, Unit, or Property Line:				

BOTTOM HOLE LOCATION FOR HORIZONTAL HOLE: (LATERALS)

LATERAL #1

SEC	TWP	RGE	COUNTY						
14	20N	20W	WOODWARD						
Spot Location	NW 1/4	NE 1/4	NE 1/4	NW 1/4	Feet From 1/4 Sec Lines	FNL 198'	FWL 2251'		
Depth of Deviation	6,382'		Radius of Turn	850		Direction	7	Total Length	4,668'
Measured Total Depth	16,910'		True Vertical Depth	11,694'		BHL From Lease, Unit, or Property Line: 198'			

LATERAL #2

SEC	TWP	RGE	COUNTY				
Spot Location	1/4	1/4	1/4	1/4	Feet From 1/4 Sec Lines	FSL	FWL
Depth of Deviation	Radius of Turn		Direction		Total Length		
Measured Total Depth	True Vertical Depth		BHL From Lease, Unit, or Property Line:				

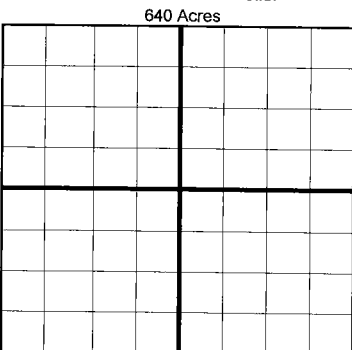
LATERAL #3

SEC	TWP	RGE	COUNTY				
Spot Location	1/4	1/4	1/4	1/4	Feet From 1/4 Sec Lines	FSL	FWL
Depth of Deviation	Radius of Turn		Direction		Total Length		
Measured Total Depth	True Vertical Depth		BHL From Lease, Unit, or Property Line:				

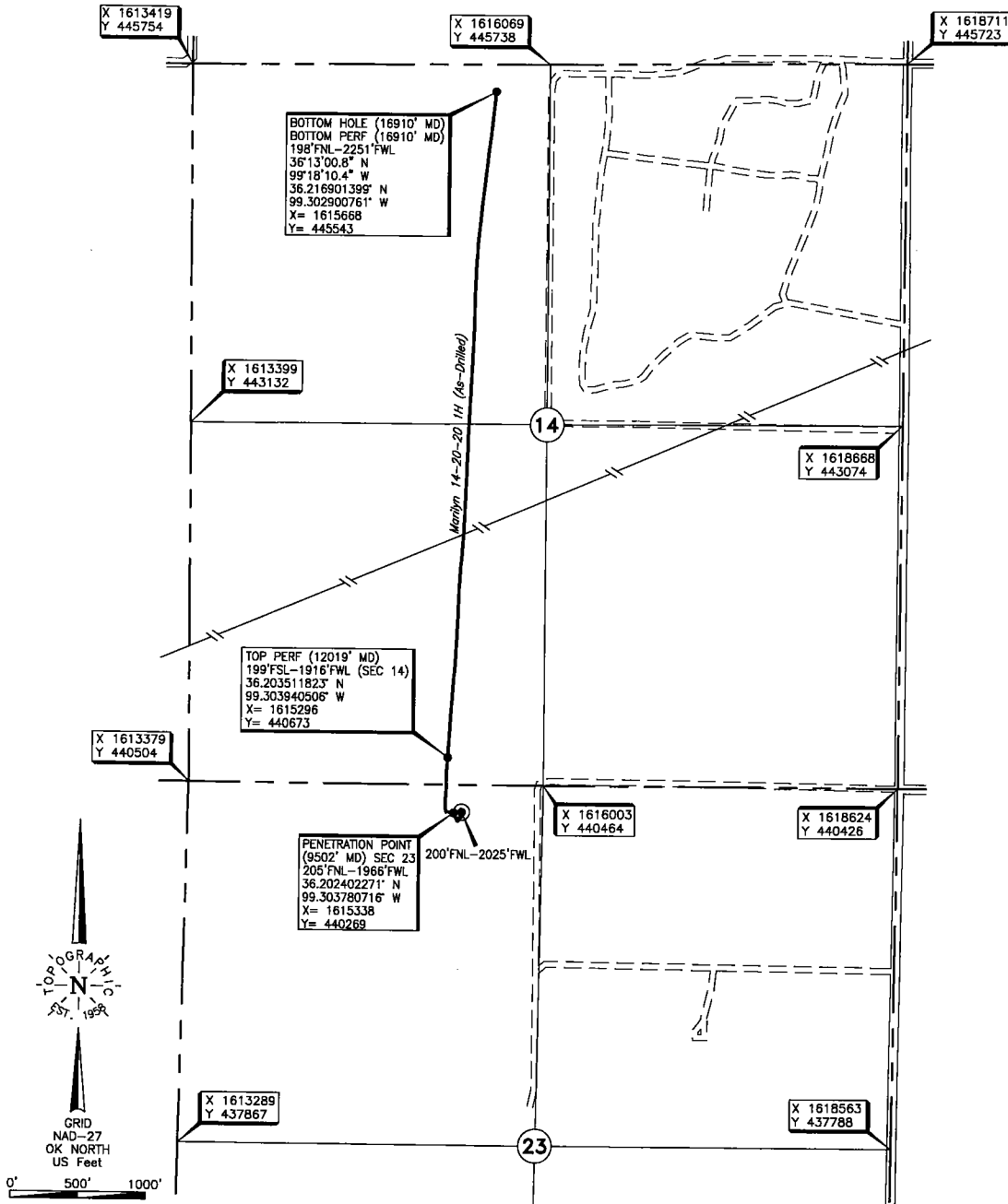
If more than three drainholes are proposed, attach a separate sheet indicating the necessary information.

Direction must be stated in degrees azimuth. Please note, the horizontal drainhole and its end point must be located within the boundaries of the lease or spacing unit.

Directional surveys are required for all drainholes and directional wells.



WOODWARD County, Oklahoma
 200'FNL-2025'FWL Section 23 Township 20N Range 20W I.M.



Operator: TAPSTONE ENERGY

Lease Name: MARILYN 14-20-20 Well No.: 1H **ELEVATION:** 2141' Gr. at Stake

Topography & Vegetation Loc. fell in sloped grass pasture

Good Drill Site? Yes Reference Stakes or Alternate Location Stakes Set None

Best Accessibility to Location From East off county road

Distance & Direction from Hwy Jct or Town From Sharon, OK, go ±5.0 mi. South, then ±1.0 mi. East to the

NW Cor. of Sec. 23-T20N-R20W

(This information was gathered with a GPS receiver with ±1 foot Horiz./Vert. accuracy)

DATUM: NAD-27
 LAT: 36°12'08.7" N
 LONG: 99°18'12.9" W
 LAT: 36.202416349° N
 LONG: 99.303580145° W
 STATE PLANE
 COORDINATES: (US Feet)
 ZONE: OK NORTH
 X: 1615397
 Y: 440273

269448 Date of Drawing: Jan. 24, 2017
 Invoice # 266136 Date Staked: Oct. 14, 2016 JP

FINAL AS-DRILLED PLAT

AS-DRILLED INFORMATION
 FURNISHED BY TAPSTONE ENERGY