

Oklahoma Corporation Commission
 Oil & Gas Conservation Division
 Post Office Box 52000
 Oklahoma City, Oklahoma 73152-2000
 Rule 165: 10-3-25

Form 1002A

API No.: 35133252320000

Completion Report

Spud Date: September 02, 2016

OTC Prod. Unit No.:

Drilling Finished Date: September 17, 2016

1st Prod Date: October 25, 2016

Completion Date: October 25, 2016

Drill Type: STRAIGHT HOLE

Min Gas Allowable: Yes

Well Name: DEBBI 1-30

Purchaser/Measurer:

Location: SEMINOLE 30 8N 8E
 W2 SE NW NW
 1650 FSL 859 FWL of 1/4 SEC
 Latitude: 35.14207633 Longitude: 96.5083711
 Derrick Elevation: 836 Ground Elevation: 836

First Sales Date:

Operator: RUFFEL LANCE OIL & GAS LLC 15459

210 PARK AVE STE 2150
 OKLAHOMA CITY, OK 73102-5632

Completion Type	
X	Single Zone
	Multiple Zone
	Commingled

Location Exception
Order No
There are no Location Exception records to display.

Increased Density
Order No
There are no Increased Density records to display.

Casing and Cement							
Type	Size	Weight	Grade	Feet	PSI	SAX	Top of CMT
SURFACE	8 5/8	32	J-55	431		215	SURFACE
PRODUCTION	5 1/2	17	J-55	4056		300	2163

Liner								
Type	Size	Weight	Grade	Length	PSI	SAX	Top Depth	Bottom Depth
There are no Liner records to display.								

Total Depth: 2163

Packer	
Depth	Brand & Type
There are no Packer records to display.	

Plug	
Depth	Plug Type
There are no Plug records to display.	

Initial Test Data

Test Date	Formation	Oil BBL/Day	Oil-Gravity (API)	Gas MCF/Day	Gas-Oil Ratio Cu FT/BBL	Water BBL/Day	Pumpin or Flowing	Initial Shut-In Pressure	Choke Size	Flow Tubing Pressure
Oct 25, 2016	MISENER-HUNTON	25.01	42			240	PUMPING	725	10/64	

Completion and Test Data by Producing Formation

Formation Name: MISENER-HUNTON

Code: 319MSRH

Class: OIL

Spacing Orders

Order No	Unit Size
654075	40

Perforated Intervals

From	To
3888	3959

Acid Volumes

1,500 GALLONS 20%, 8,000 BARRELS

Fracture Treatments

There are no Fracture Treatments records to display.
--

Formation	Top
HENRIETTA COAL	1818
HARTSHORNE COAL	2938
HUNTON	3009
CROMWELL	3080
WOODFORD	3756
SYLVAN	3977
VIOLA	4050

Were open hole logs run? Yes

Date last log run: September 16, 2016

Were unusual drilling circumstances encountered? No

Explanation:

Other Remarks

There are no Other Remarks.

FOR COMMISSION USE ONLY

1136064

Status: Accepted

RECEIVED

Form 1002A Rev. 2009

FEB 27 2017

OKLAHOMA CORPORATION COMMISSION

API NO. 133-25232
OTC PROD. UNIT NO. 15459

PLEASE TYPE OR USE BLACK INK ONLY
NOTE: Attach copy of original 1002A if recompletion or reentry.

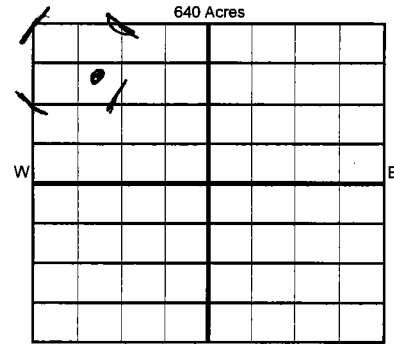
OKLAHOMA CORPORATION COMMISSION
Oil & Gas Conservation Division
Post Office Box 52000
Oklahoma City, Oklahoma 73152-2000
Rule 165:10-3-25

ORIGINAL
 AMENDED (Reason)

COMPLETION REPORT

TYPE OF DRILLING OPERATION
 STRAIGHT HOLE DIRECTIONAL HOLE HORIZONTAL HOLE
 SERVICE WELL

SPUD DATE 9/2/2016
DRLG FINISHED DATE 9/17/2016
DATE OF WELL COMPLETION 10/25/2016
1st PROD DATE 10/25/2016
RECOMP DATE
Longitude (if known) 96.5083711



If directional or horizontal, see reverse for bottom hole location.
COUNTY Seminole SEC 30 TWP 8N RGE 8E
LEASE NAME Debbi WELL NO. #1-30
W/2 1/4 SE 1/4 NW 1/4 NW 1/4 FSL 1650' FWL OF 1/4 SEC 859'
ELEVATIO N Derrick 836' Ground 836' Latitude (if known) 35.14207633
OPERATOR NAME LANCE RUFFEL OIL & GAS LLC OTC/OCC OPERATOR NO. 15459-0
ADDRESS 210 PARK AVENUE, SUITE 2150
CITY OKLAHOMA CITY STATE OK ZIP 73102

COMPLETION TYPE
 SINGLE ZONE
 MULTIPLE ZONE
Application Date
COMINGLED
Application Date
LOCATION
EXCEPTION ORDER
INCREASED DENSITY
ORDER NO.

CASING & CEMENT (Form 1002C must be attached)

TYPE	SIZE	WEIGHT	GRADE	FEET	PSI	SAX	TOP OF CMT
CONDUCTOR							
SURFACE	8-5/8"	32#	J-55	431.64'		215	Surface
INTERMEDIATE							
PRODUCTION	5-1/2"	17#	J-55	4056.06'		300	2163
LINER							

TOTAL DEPTH 2,163

PACKER @ _____ BRAND & TYPE _____ PLUG @ _____ TYPE _____ PLUG @ _____ TYPE _____
PACKER @ _____ BRAND & TYPE _____ PLUG @ _____ TYPE _____ PLUG @ _____ TYPE _____

COMPLETION & TEST DATA BY PRODUCING FORMATION *319MSRH*

FORMATION	SPACING & SPACING ORDER NUMBER	CLASS: Oil, Gas, Dry, Inj, Disp, Comm Disp, Svc	PERFORATED INTERVALS	ACID/VOLUME	FRACTURE TREATMENT (Fluids/Prop Amounts)
<i>Migener</i> Hunton	654075 - 40 Acres	Oil	3,888' - 3,902' 3,939'-3,959'	1,500 Gallons 20% 8,000 BBLS	

Min Gas Allowable (165:10-17-7) OR Oil Allowable (165:10-13-3)
Gas Purchaser/Measurer _____ First Sales Date _____

INITIAL TEST DATA

INITIAL TEST DATE	10/25/2016
OIL-BBL/DAY	25.01
OIL-GRAVITY (API)	42
GAS-MCF/DAY	0
GAS-OIL RATIO CU FT/BBL	0
WATER-BBL/DAY	240
PUMPING OR FLOWING	pmpg
INITIAL SHUT-IN PRESSURE	725
CHOKE SIZE	10/64"
FLOW TUBING PRESSURE	

AS SUBMITTED

A record of the formations drilled through, and pertinent remarks are presented on the reverse. I declare that I have knowledge of the contents of this report and am authorized by my organization to make this report, which was prepared by me or under my supervision and direction, with the data and facts stated herein to be true, correct, and complete to the best of my knowledge and belief.

SIGNATURE *[Signature]* LANCE RUFFEL NAME (PRINT OR TYPE)
210 PARK AVENUE, SUITE 2150 OKLAHOMA CITY OK 73102 ADDRESS CITY STATE ZIP
2.24.17 DATE 405/239-7036 PHONE NUMBER
EMAIL ADDRESS

PLEASE TYPE OR USE BLACK INK ONLY

FORMATION RECORD

Give formation names and tops, if available, or descriptions and thickness of formations drilled through. Show intervals cored or drillstem tested.

NAMES OF FORMATIONS	TOP
Henryetta Coal	1,818
Hartshorne Coal	2,938
Cromwell	3080
Woodford	3,756
Hunton	3,009
Sylvan	3,977
Viola	4,050
TD	4,080

LEASE NAME _____ WELL NO. _____

FOR COMMISSION USE ONLY		
ITD on file	<input type="checkbox"/> YES	<input type="checkbox"/> NO
APPROVED	DISAPPROVED	2) Reject Codes

Were open hole logs run? yes no

Date Last log was run 9/16/2016

Was CO₂ encountered? yes no at what depths? _____

Was H₂S encountered? yes no at what depths? _____

Were unusual drilling circumstances encountered? yes no
If yes, briefly explain below _____

Other remarks: _____

640 Acres

If more than three drainholes are proposed, attach a separate sheet indicating the necessary information.

Direction must be stated in degrees azimuth.
Please note, the horizontal drainhole and its end point must be located within the boundaries of the lease or spacing unit.

Directional surveys are required for all drainholes and directional wells.

640 Acres

BOTTOM HOLE LOCATION FOR DIRECTIONAL HOLE

SEC	TWP	RGE	COUNTY				
Spot Location	1/4	1/4	1/4	1/4	Feet From 1/4 Sec Lines	FSL	FWL
Measured Total Depth	True Vertical Depth		BHL From Lease, Unit, or Property Line:				

BOTTOM HOLE LOCATION FOR HORIZONTAL HOLE: (LATERALS)

LATERAL #1

SEC	TWP	RGE	COUNTY	Seminole			
Spot Location	1/4	1/4	1/4	1/4	Feet From 1/4 Sec Lines	FSL	FWL
Depth of Deviation	Radius of Turn		Direction		Total Length		
Measured Total Depth	True Vertical Depth		BHL From Lease, Unit, or Property Line:				

LATERAL #2

SEC	TWP	RGE	COUNTY				
Spot Location	1/4	1/4	1/4	1/4	Feet From 1/4 Sec Lines	FSL	FWL
Depth of Deviation	Radius of Turn		Direction		Total Length		
Measured Total Depth	True Vertical Depth		BHL From Lease, Unit, or Property Line:				

LATERAL #3

SEC	TWP	RGE	COUNTY				
Spot Location	1/4	1/4	1/4	1/4	Feet From 1/4 Sec Lines	FSL	FWL
Depth of Deviation	Radius of Turn		Direction		Total Length		
Measured Total Depth	True Vertical Depth		BHL From Lease, Unit, or Property Line:				