

Oklahoma Corporation Commission  
Oil & Gas Conservation Division  
Post Office Box 52000  
Oklahoma City, Oklahoma 73152-2000  
Rule 165: 10-3-25

Form 1002A

API No.: 35111275130000

**Completion Report**

Spud Date: February 02, 2017

OTC Prod. Unit No.:

Drilling Finished Date: February 04, 2017

1st Prod Date:

Completion Date: February 20, 2017

**Drill Type: STRAIGHT HOLE**

Well Name: CASSIE 1-32

Purchaser/Measurer:

Location: OKMULGEE 32 15N 11E  
SE NW SW NE  
1747 FNL 1985 FEL of 1/4 SEC  
Derrick Elevation: 0 Ground Elevation: 732

First Sales Date:

Operator: WFD OIL CORPORATION 17501

16800 CONIFER LN  
EDMOND, OK 73012-0619

Completion Type	
<input type="checkbox"/>	Single Zone
<input type="checkbox"/>	Multiple Zone
<input type="checkbox"/>	Commingled

Location Exception	
Order No	
There are no Location Exception records to display.	

Increased Density	
Order No	
There are no Increased Density records to display.	

Casing and Cement							
Type	Size	Weight	Grade	Feet	PSI	SAX	Top of CMT
SURFACE	7			158		40	SURFACE

Liner								
Type	Size	Weight	Grade	Length	PSI	SAX	Top Depth	Bottom Depth
There are no Liner records to display.								

**Total Depth: 2650**

Packer	
Depth	Brand & Type
There are no Packer records to display.	

Plug	
Depth	Plug Type
There are no Plug records to display.	

Initial Test Data										
Test Date	Formation	Oil BBL/Day	Oil-Gravity (API)	Gas MCF/Day	Gas-Oil Ratio Cu FT/BBL	Water BBL/Day	Pumpin or Flowing	Initial Shut-In Pressure	Choke Size	Flow Tubing Pressure
There are no Initial Data records to display.										

Completion and Test Data by Producing Formation

Formation Name: NONE

Code:

Class: DRY

Formation	Top
SKINNER SS	1440
RED FORK SS	1650
BARTLESVILLE SS	2025
DUTCHER LS	2438
DUTCHER SS	2520

Were open hole logs run? Yes

Date last log run: February 04, 2017

Were unusual drilling circumstances encountered? No

Explanation:

**Other Remarks**

There are no Other Remarks.

**FOR COMMISSION USE ONLY**

1136073

Status: Accepted

RECEIVED

Form 1002A Rev. 2009

API NO. 111 27513  
OTC PROD.  
UNIT NO.

PLEASE TYPE OR USE BLACK INK ONLY  
NOTE:

Attach copy of original 1002A if recompletion or reentry.

OKLAHOMA CORPORATION COMMISSION  
Oil & Gas Conservation Division  
Post Office Box 52000  
Oklahoma City, Oklahoma 73152-2000  
Rule 165:10-3-25

MAR 01 2017

OKLAHOMA CORPORATION COMMISSION

ORIGINAL  
 AMENDED (Reason)

COMPLETION REPORT

TYPE OF DRILLING OPERATION  
 STRAIGHT HOLE  DIRECTIONAL HOLE  HORIZONTAL HOLE  
 SERVICE WELL

SPUD DATE 2-2-17  
DRLG FINISHED DATE 2-4-17

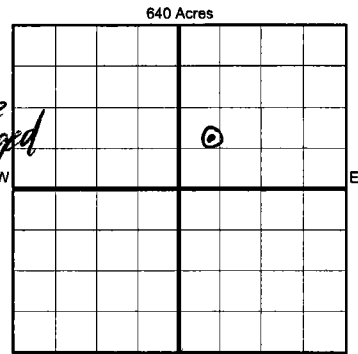
If directional or horizontal, see reverse for bottom hole location.

COUNTY Oklahoma SEC 32 TWP 15N RGE 11E  
LEASE NAME CASSIE  
SE 1/4 NW 1/4 SW 1/4 NE 1/4  
ELEVATION Ground 732  
N Derrick

DATE OF WELL COMPLETION 2-20-17  
1st PROD DATE  
RECOMP DATE  
Longitude (if known)

OPERATOR NAME WFO OIL CORP  
ADDRESS 16800 Conifer Lane  
CITY Edmond STATE OK ZIP 73012

OTC/OCC OPERATOR NO. 17507



LOCATE WELL

COMPLETION TYPE table with rows for SINGLE ZONE, MULTIPLE ZONE, COMMINGLED, LOCATION, EXCEPTION ORDER, INCREASED DENSITY, ORDER NO.

CASING & CEMENT table with columns: TYPE, SIZE, WEIGHT, GRADE, FEET, PSI, SAX, TOP OF CMT. Includes handwritten '7', '150', '40', 'surface'.

PACKER @ BRAND & TYPE PLUG @ TYPE PLUG @ TYPE TOTAL DEPTH 2650

COMPLETION & TEST DATA BY PRODUCING FORMATION table with rows for FORMATION, SPACING & SPACING, PERFORATED INTERVALS, ACID/VOLUME, FRACTURE TREATMENT. Includes handwritten 'Dry'.

Min Gas Allowable (165:10-17-7) OR Oil Allowable (165:10-13-3) Gas Purchaser/Measurer First Sales Date

INITIAL TEST DATA table with rows for INITIAL TEST DATE, OIL-BBL/DAY, OIL-GRAVITY (API), GAS-MCF/DAY, GAS-OIL RATIO CU FT/BBL, WATER-BBL/DAY, PUMPING OR FLOWING, INITIAL SHUT-IN PRESSURE, CHOKE SIZE, FLOW TUBING PRESSURE. Includes handwritten 'Dry Hole' and 'AS SUBMITTED' stamp.

A record of the formations drilled through, and pertinent remarks are presented on the reverse. I declare that I have knowledge of the contents of this report and am authorized by my organization to make this report, which was prepared by me or under my supervision and direction, with the data and facts stated herein to be true, correct, and complete to the best of my knowledge and belief.  
SIGNATURE: [Signature] NAME (PRINT OR TYPE): W F DOST JR DATE: 2/14/17 PHONE NUMBER: 405-7153130  
ADDRESS: 16800 Conifer Lane CITY: Edmond STATE: OK ZIP: 73012 EMAIL ADDRESS: Bdost.wfo@cox.net

Per Plugging Report

PLEASE TYPE OR USE BLACK INK ONLY  
FORMATION RECORD

Give formation names and tops, if available, or descriptions and thickness of formations drilled through. Show intervals cored or drillstem tested.

LEASE NAME CASSIE WELL NO. 1-32

NAMES OF FORMATIONS	TOP
Skinner SS	1440'
New Fork SS	1650'
Battlesville SS	2025
Dutcher LS	2438
Dutcher SS	2520
TD	2675

FOR COMMISSION USE ONLY

ITD on file  YES  NO

APPROVED \_\_\_\_\_ DISAPPROVED \_\_\_\_\_

2) Reject Codes \_\_\_\_\_

\_\_\_\_\_

\_\_\_\_\_

\_\_\_\_\_

\_\_\_\_\_

Were open hole logs run?  yes  no

Date Last log was run 2-4-17

Was CO<sub>2</sub> encountered?  yes  no at what depths? \_\_\_\_\_

Was H<sub>2</sub>S encountered?  yes  no at what depths? \_\_\_\_\_

Were unusual drilling circumstances encountered?  yes  no

If yes, briefly explain below \_\_\_\_\_

Other remarks:

\_\_\_\_\_

\_\_\_\_\_

\_\_\_\_\_

\_\_\_\_\_

\_\_\_\_\_

640 Acres


If more than three drainholes are proposed, attach a separate sheet indicating the necessary information.

Direction must be stated in degrees azimuth. Please note, the horizontal drainhole and its end point must be located within the boundaries of the lease or spacing unit.

Directional surveys are required for all drainholes and directional wells.

640 Acres


BOTTOM HOLE LOCATION FOR DIRECTIONAL HOLE

SEC	TWP	RGE	COUNTY					
Spot Location			1/4	1/4	1/4	Feet From 1/4 Sec Lines	FSL	FWL
Measured Total Depth			True Vertical Depth		BHL From Lease, Unit, or Property Line:			

BOTTOM HOLE LOCATION FOR HORIZONTAL HOLE: (LATERALS)

LATERAL #1

SEC	TWP	RGE	COUNTY					
Spot Location			1/4	1/4	1/4	Feet From 1/4 Sec Lines	FSL	FWL
Depth of Deviation		Radius of Turn		Direction		Total Length		
Measured Total Depth			True Vertical Depth		BHL From Lease, Unit, or Property Line:			

LATERAL #2

SEC	TWP	RGE	COUNTY					
Spot Location			1/4	1/4	1/4	Feet From 1/4 Sec Lines	FSL	FWL
Depth of Deviation		Radius of Turn		Direction		Total Length		
Measured Total Depth			True Vertical Depth		BHL From Lease, Unit, or Property Line:			

LATERAL #3

SEC	TWP	RGE	COUNTY					
Spot Location			1/4	1/4	1/4	Feet From 1/4 Sec Lines	FSL	FWL
Depth of Deviation		Radius of Turn		Direction		Total Length		
Measured Total Depth			True Vertical Depth		BHL From Lease, Unit, or Property Line:			