

Oklahoma Corporation Commission
Oil & Gas Conservation Division
Post Office Box 52000
Oklahoma City, Oklahoma 73152-2000
Rule 165: 10-3-25

Form 1002A

API No.: 35063246190001

Completion Report

Spud Date: October 18, 2016

OTC Prod. Unit No.: 063-218195

Drilling Finished Date: November 16, 2016

1st Prod Date: December 27, 2016

Completion Date: December 18, 2016

Drill Type: HORIZONTAL HOLE

Min Gas Allowable: Yes

Well Name: MEADORS 25-1H

Purchaser/Measurer: BP ENERGY CO

Location: HUGHES 36 9N 10E
SE NW NE NW
550 FNL 1760 FWL of 1/4 SEC
Latitude: 36.8813307 Longitude: -96.167197
Derrick Elevation: 0 Ground Elevation: 723

First Sales Date: 12/27/2016

Operator: CALYX ENERGY III LLC 23515

6120 S YALE AVE STE 1480
TULSA, OK 74136-4226

Completion Type	
X	Single Zone
	Multiple Zone
	Commingled

Location Exception	
Order No	
658995	

Increased Density	
Order No	
There are no Increased Density records to display.	

Casing and Cement							
Type	Size	Weight	Grade	Feet	PSI	SAX	Top of CMT
CONDUCTOR	20			29		9	SURFACE
SURFACE	13 3/8	54.5	J-55	512		390	SURFACE
PRODUCTION	5 1/2	17	HCP-110	8729		1550	2816

Liner								
Type	Size	Weight	Grade	Length	PSI	SAX	Top Depth	Bottom Depth
There are no Liner records to display.								

Total Depth: 8759

Packer	
Depth	Brand & Type
There are no Packer records to display.	

Plug	
Depth	Plug Type
There are no Plug records to display.	

Initial Test Data

Test Date	Formation	Oil BBL/Day	Oil-Gravity (API)	Gas MCF/Day	Gas-Oil Ratio Cu FT/BBL	Water BBL/Day	Pumpin or Flowing	Initial Shut-In Pressure	Choke Size	Flow Tubing Pressure
Dec 27, 2016	MISSISSIPPIAN	23	37	1788	77739	1399	FLOWING	1500	78/64	240

Completion and Test Data by Producing Formation

Formation Name: MISSISSIPPIAN

Code: 359MSSP

Class: GAS

Spacing Orders

Order No	Unit Size
658460	640

Perforated Intervals

From	To
3871	8617

Acid Volumes

739 BARRELS 15% HCL

Fracture Treatments

139,687 BARRELS FLUID, 4,433,304 POUNDS SAND

Formation	Top
BOOCH SS	2332
UNION VALLEY Limestone	3259
MISSISSIPPIAN	3820

Were open hole logs run? No

Date last log run: November 29, 2016

Were unusual drilling circumstances encountered? No

Explanation:

Other Remarks

OCC - THIS DOCUMENT IS ACCEPTED BASED ON THE DATA SUBMITTED THE FINAL LOCATION EXCEPTION HAS NOT BEEN ISSUED.

Lateral Holes

Sec: 25 TWP: 9N RGE: 10E County: HUGHES

NW NE NE NW

107 FNL 2309 FWL of 1/4 SEC

Depth of Deviation: 3134 Radius of Turn: 842 Direction: 1 Total Length: 4783

Measured Total Depth: 8759 True Vertical Depth: 3556 End Pt. Location From Release, Unit or Property Line: 107

FOR COMMISSION USE ONLY

1136236

Status: Accepted

RECEIVED

Form 1002A Rev. 2009

MAR 16 2017

OKLAHOMA CORPORATION COMMISSION

API NO. 3506324619
OTC PROD. UNIT NO. 063-218195

PLEASE TYPE OR USE BLACK INK ONLY
NOTE:

Attach copy of original 1002A if recompletion or reentry.

OKLAHOMA CORPORATION COMMISSION
Oil & Gas Conservation Division
Post Office Box 52000
Oklahoma City, Oklahoma 73152-2000
Rule 165-10-3-25

COMPLETION REPORT

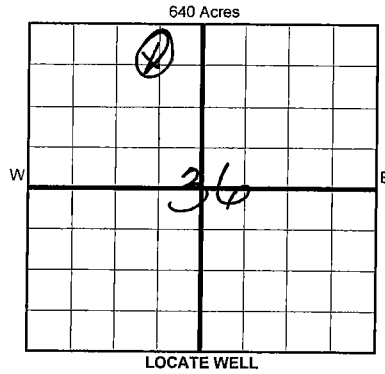
ORIGINAL
 AMENDED (Reason)

TYPE OF DRILLING OPERATION

STRAIGHT HOLE DIRECTIONAL HOLE HORIZONTAL HOLE
 SERVICE WELL

If directional or horizontal, see reverse for bottom hole location.

Form with fields: COUNTY (HUGHES), SEC (36), TWP (9N), RGE (10E), LEASE NAME (MEADORS), WELL NO. (25-1H), DATE OF WELL COMPLETION (12/18/16), 1st PROD DATE (12/27/16), RECOMP DATE, ELEVATION (723), FNL DF (550), FWL OF 1/4 SEC (1760), OPERATOR (CALYX ENERGY III, LLC), ADDRESS (6120 S. YALE #1480), CITY (TULSA), STATE (OK), ZIP (74136)



COMPLETION TYPE

Form with fields: SINGLE ZONE, MULTIPLE ZONE, COMMINGLED, LOCATION (658995 ID.), EXCEPTION ORDER INCREASED DENSITY ORDER NO.

CASING & CEMENT (Form 1002C must be attached)

Table with columns: TYPE, SIZE, WEIGHT, GRADE, FEET, PSI, SAX, TOP OF CMT. Rows include CONDUCTOR (20", 29 FT), SURFACE (13-3/8", 54.5# J-55, 512 FT), INTERMEDIATE, PRODUCTION (5-1/2", 17# HCP-110, 8729 FT), LINER. TOTAL DEPTH: 8,759

PACKER @ _____ BRAND & TYPE _____ PLUG @ _____ TYPE _____ PLUG @ _____ TYPE _____
PACKER @ _____ BRAND & TYPE _____ PLUG @ _____ TYPE _____ PLUG @ _____ TYPE _____

COMPLETION & TEST DATA BY PRODUCING FORMATION 359 MSSP

Table with columns: FORMATION, SPACING & SPACING ORDER NUMBER, CLASS, PERFORATED INTERVALS, ACID/VOLUME, FRACTURE TREATMENT. Includes handwritten notes: 'GAS', '3871-8617', '739 Bbls 15% HCl', '139,687 Bbls Fluid', '4,433,304 # Sd', and 'Reported to FracFacts'.

Min Gas Allowable (165-10-17-7) OR

Gas Purchaser/Measurer
First Sales Date

BP Energy Co
12/27/2016

INITIAL TEST DATA

Table with columns: INITIAL TEST DATE, OIL-BBL/DAY, OIL-GRAVITY (API), GAS-MCF/DAY, GAS-OIL RATIO CU FT/BBL, WATER-BBL/DAY, PUMPING OR FLOWING, INITIAL SHUT-IN PRESSURE, CHOKE SIZE, FLOW TUBING PRESSURE. Includes a large 'AS SUBMITTED' stamp.

A record of the formations drilled through, and pertinent remarks are presented on the reverse. I declare that I have knowledge of the contents of this report and am authorized by my organization to make this report, which was prepared by me or under my supervision and direction, with the data and facts stated herein to be true, correct, and complete to the best of my knowledge and belief.

SIGNATURE: Teresa Wade, DATE: 3/14/2017, PHONE NUMBER: 918-949-4224
ADDRESS: 6120 S. Yale, #1480, CITY: Tulsa, STATE: OK, ZIP: 74136, EMAIL ADDRESS: twade@calyxenergy.com

PLEASE TYPE OR USE BLACK INK ONLY
FORMATION RECORD

Give formation names and tops, if available, or descriptions and thickness of formations drilled through. Show intervals cored or drillstem tested.

LEASE NAME MEADORS WELL NO. 25-1H

NAMES OF FORMATIONS	TOP
BOOCH SS	2,332
UV LIMESTONE	3,259
MISSISSIPPIAN	3,820

FOR COMMISSION USE ONLY

ITD on file YES NO

APPROVED _____ DISAPPROVED _____

2) Reject Codes

Were open hole logs run? _____ yes no

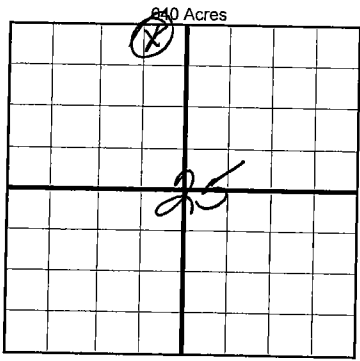
Date Last log was run 11/29/2016

Was CO₂ encountered? _____ yes no at what depths? _____

Was H₂S encountered? _____ yes no at what depths? _____

Were unusual drilling circumstances encountered? _____ yes no
If yes, briefly explain below

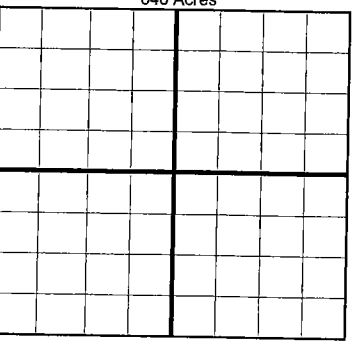
Other remarks:



If more than three drainholes are proposed, attach a separate sheet indicating the necessary information.

Direction must be stated in degrees azimuth. Please note, the horizontal drainhole and its end point must be located within the boundaries of the lease or spacing unit.

Directional surveys are required for all drainholes and directional wells.



BOTTOM HOLE LOCATION FOR DIRECTIONAL HOLE

SEC	TWP	RGE	COUNTY				
Spot Location	1/4	1/4	1/4	1/4	Feet From 1/4 Sec Lines	FSL	FWL
Measured Total Depth	True Vertical Depth		BHL From Lease, Unit, or Property Line:				

BOTTOM HOLE LOCATION FOR HORIZONTAL HOLE: (LATERALS)

LATERAL #1

SEC	TWP	RGE	COUNTY				
25	9N	10E	HUGHES				
Spot Location	NW 1/4	NE 1/4	NE 1/4	NW 1/4	Feet From 1/4 Sec Lines	FNL	FWL
Depth of Deviation	3,134		Radius of Turn	842	Direction	<u>1 NE</u>	Total Length
Measured Total Depth	8,759		True Vertical Depth	3,556		BHL From Lease, Unit, or Property Line: 107'	

LATERAL #2

SEC	TWP	RGE	COUNTY				
Spot Location	1/4	1/4	1/4	1/4	Feet From 1/4 Sec Lines	FSL	FWL
Depth of Deviation	Radius of Turn		Direction		Total Length		
Measured Total Depth	True Vertical Depth		BHL From Lease, Unit, or Property Line:				

LATERAL #3

SEC	TWP	RGE	COUNTY				
Spot Location	1/4	1/4	1/4	1/4	Feet From 1/4 Sec Lines	FSL	FWL
Depth of Deviation	Radius of Turn		Direction		Total Length		
Measured Total Depth	True Vertical Depth		BHL From Lease, Unit, or Property Line:				

