

Oklahoma Corporation Commission
Oil & Gas Conservation Division
Post Office Box 52000
Oklahoma City, Oklahoma 73152-2000
Rule 165: 10-3-25

Form 1002A

API No.: 35063246200000

Completion Report

Spud Date: October 19, 2016

OTC Prod. Unit No.: 063-218217

Drilling Finished Date: November 07, 2016

1st Prod Date: January 08, 2017

Completion Date: December 30, 2016

Drill Type: HORIZONTAL HOLE

Min Gas Allowable: Yes

Well Name: MEADORS 36-1HX

Purchaser/Measurer: BP ENERGY CO

Location: HUGHES 36 9N 10E
SE NW NE NW
550 FNL 1775 FWL of 1/4 SEC
Latitude: 36.8813299 Longitude: -96.167146
Derrick Elevation: 0 Ground Elevation: 723

First Sales Date: 01/08/2017

Operator: CALYX ENERGY III LLC 23515

6120 S YALE AVE STE 1480
TULSA, OK 74136-4226

Completion Type		Location Exception		Increased Density	
X	Single Zone	Order No		Order No	
	Multiple Zone	659388		There are no Increased Density records to display.	
	Commingled				

Casing and Cement							
Type	Size	Weight	Grade	Feet	PSI	SAX	Top of CMT
CONDUCTOR	20			29		9	SURFACE
SURFACE	13 3/8	54.5	J-55	509		390	SURFACE
INTERMEDIATE	9 5/8	40	J-55	3821		260	2800
PRODUCTION	5 1/2	17	HCP-110	11808		1480	2910

Liner								
Type	Size	Weight	Grade	Length	PSI	SAX	Top Depth	Bottom Depth
There are no Liner records to display.								

Total Depth: 11818

Packer	
Depth	Brand & Type
There are no Packer records to display.	

Plug	
Depth	Plug Type
There are no Plug records to display.	

Initial Test Data

Test Date	Formation	Oil BBL/Day	Oil-Gravity (API)	Gas MCF/Day	Gas-Oil Ratio Cu FT/BBL	Water BBL/Day	Pumpin or Flowing	Initial Shut-In Pressure	Choke Size	Flow Tubing Pressure
Jan 08, 2017	MISSISSIPPIAN	30	37	1059	35300	2730	FLOWING	1600	78/128	160

Completion and Test Data by Producing Formation

Formation Name: MISSISSIPPIAN

Code: 359MSSP

Class: GAS

Spacing Orders

Order No	Unit Size
658547	640
658548	640
659264	MULTIUNIT

Perforated Intervals

From	To
3920	11716

Acid Volumes

895 BARRELS 15% HCL

Fracture Treatments

299,968 BARRELS FLUID, 10,329,762 POUNDS SAND

Formation	Top
BOOCH SS	2292
UNION VALLEY LIMESTONE	3214
MISSISSIPPIAN	3822

Were open hole logs run? No

Date last log run: November 29, 2016

Were unusual drilling circumstances encountered? No

Explanation:

Other Remarks

OCC - THIS DOCUMENT IS ACCEPPTED BASED ON THE DATA SUBMITTED THE FINAL LOCATION EXCEPTON AND MULTIUNIT ORDERS HAVE NOT BEEN ISSUED.

Lateral Holes

Sec: 1 TWP: 8N RGE: 10E County: HUGHES

NE SW NE SW

1979 FSL 1943 FWL of 1/4 SEC

Depth of Deviation: 2990 Radius of Turn: 985 Direction: 179 Total Length: 7796

Measured Total Depth: 11818 True Vertical Depth: 3671 End Pt. Location From Release, Unit or Property Line: 1943

FOR COMMISSION USE ONLY

1136239

Status: Accepted

API NO. 3506324620
OTC PROD. UNIT NO. 063-218217

PLEASE TYPE OR USE BLACK INK ONLY

NOTE:

Attach copy of original 1002A
if recompletion or reentry.

OKLAHOMA CORPORATION COMMISSION
Oil & Gas Conservation Division
Post Office Box 52000
Oklahoma City, Oklahoma 73152-2000
Rule 165:10-3-25

RECEIVED

MAR 16 2017

OKLAHOMA CORPORATION
COMMISSION

☒ ORIGINAL
☐ AMENDED (Reason)

COMPLETION REPORT

TYPE OF DRILLING OPERATION

☐ STRAIGHT HOLE ☐ DIRECTIONAL HOLE ☒ HORIZONTAL HOLE
SERVICE WELL

If directional or horizontal, see reverse for bottom hole location.

COUNTY	HUGHES	SEC	36	TWP	9N	RGE	10E	SPUD DATE	10/19/16
LEASE NAME	MEADORS			WELL NO.	36-1HX			DRLG FINISHED DATE	11/7/16
SE 1/4 NW 1/4 NE 1/4 NW 1/4	FNL OF 1/4 SEC 550			FWL OF 1/4 SEC	1775			DATE OF WELL COMPLETION	12/30/16
ELEVATION N Derrick	Ground	723	Latitude (if known)	-96.167146			Longititude (if known)	36.8813299	
OPERATOR NAME	CALYX ENERGY III, LLC			OTC/OCC OPERATOR NO.	23515				
ADDRESS	6120 S. YALE #1480								
CITY	TULSA			STATE	OK	ZIP	74136		

640 Acres

LOCATE WELL

COMPLETION TYPE

<input checked="" type="checkbox"/> SINGLE ZONE
<input type="checkbox"/> MULTIPLE ZONE
Application Date
COMINGLED
Application Date
LOCATION
EXCEPTION ORDER
INCREASED DENSITY
ORDER NO.

CASING & CEMENT (Form 1002C must be attached)

TYPE	SIZE	WEIGHT	GRADE	FEET	PSI	SAX	TOP OF CMT
CONDUCTOR	20"			29		9	SURFACE
SURFACE	13-3/8"	54.5#	J-55	509		390	SURFACE
INTERMEDIATE	9-5/8"	40#	J-55	3,821		260	2,800
PRODUCTION	5-1/2"	17#	HCP-110	11808		1480	2910
LINER							
TOTAL DEPTH						11,818	

PACKER @ _____ BRAND & TYPE _____ PLUG @ _____ TYPE _____ PLUG @ _____ TYPE _____
PACKER @ _____ BRAND & TYPE _____ PLUG @ _____ TYPE _____ PLUG @ _____ TYPE _____

COMPLETION & TEST DATA BY PRODUCING FORMATION

FORMATION	MISSISSIPPIAN
SPACING & SPACING ORDER NUMBER	(640) 658548/658547 (640) 659264 I.D. Multiunit
CLASS: Oil, Gas, Dry, Inj, Disp, Comm Disp, Svc	GAS
PERFORATED INTERVALS	3920-11716
ACID/VOLUME	895 Bbls 15% HCl
FRACTURE TREATMENT (Fluids/Prop Amounts)	299,968 Bbls Fluid 10,329,762 # Sd

Reported to FracFocus

Min Gas Allowable (165:10-17-7) Gas Purchaser/Measurer BP Energy Co
OR First Sales Date 1/8/2017
Oil Allowable (165:10-13-3)

INITIAL TEST DATA

INITIAL TEST DATE	1/8/2017
OIL-BBL/DAY	30
OIL-GRAVITY (API)	37
GAS-MCF/DAY	1059
GAS-OIL RATIO CU FT/BBL	35300
WATER-BBL/DAY	2730
PUMPING OR FLOWING	Flowing
INITIAL SHUT-IN PRESSURE	1600
CHOKE SIZE	78/128"
FLOW TUBING PRESSURE	160

AS SUBMITTED

A record of the formations drilled through, and pertinent remarks are presented on the reverse. I declare that I have knowledge of the contents of this report and am authorized by my organization to make this report, which was prepared by me or under my supervision and direction, with the data and facts stated herein to be true, correct, and complete to the best of my knowledge and belief.

SIGNATURE Teresa Wade 3/14/2017 918-949-4224
NAME (PRINT OR TYPE) DATE PHONE NUMBER
6120 S. Yale, #1480 Tulsa OK 74136 twade@calyxenergy.com
ADDRESS CITY STATE ZIP EMAIL ADDRESS

PLEASE TYPE OR USE BLACK INK ONLY

FORMATION RECORD

Give formation names and tops, if available, or descriptions and thickness of formations drilled through. Show intervals cored or drillstem tested.

NAMES OF FORMATIONS	TOP
BOOCH SS	2,292
UV LIMESTONE	3,214
MISSISSIPPIAN	3,822

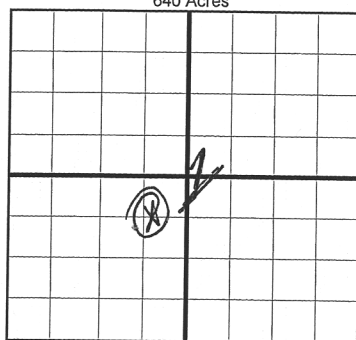
LEASE NAME MEADORS WELL NO. 36-1HX

FOR COMMISSION USE ONLY	
ITD on file <input type="checkbox"/> YES <input type="checkbox"/> NO	
APPROVED _____	DISAPPROVED _____
2) Reject Codes	

Were open hole logs run?	yes	<input checked="" type="checkbox"/> no
Date Last log was run	<u>11/29/2016</u>	
Was CO ₂ encountered?	yes	<input checked="" type="checkbox"/> no at what depths? _____
Was H ₂ S encountered?	yes	<input checked="" type="checkbox"/> no at what depths? _____
Were unusual drilling circumstances encountered?	yes	<input checked="" type="checkbox"/> no
If yes, briefly explain below		

Other remarks:

640 Acres

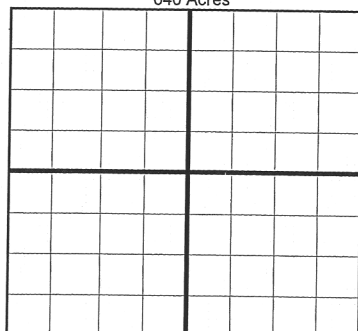


If more than three drainholes are proposed, attach a separate sheet indicating the necessary information.

Direction must be stated in degrees azimuth. Please note, the horizontal drainhole and its end point must be located within the boundaries of the lease or spacing unit.

Directional surveys are required for all drainholes and directional wells.

640 Acres



BOTTOM HOLE LOCATION FOR DIRECTIONAL HOLE

SEC	TWP	RGE	COUNTY
Spot Location	1/4	1/4	1/4
Measured Total Depth	True Vertical Depth	BHL From Lease, Unit, or Property Line:	

BOTTOM HOLE LOCATION FOR HORIZONTAL HOLE: (LATERALS)

LATERAL #1			
SEC	TWP	RGE	COUNTY
1	8N	10E	HUGHES
Spot Location	SW 1/4	NE 1/4	SW 1/4
Depth of Deviation	2,990	Radius of Turn	985
Measured Total Depth	11,818	True Vertical Depth	3,671
Direction		179.8	Total Length
BHL From Lease, Unit, or Property Line:		1979	1943

LATERAL #2			
SEC	TWP	RGE	COUNTY
Spot Location	1/4	1/4	1/4
Depth of Deviation	Radius of Turn	Direction	Total Length
Measured Total Depth	True Vertical Depth	BHL From Lease, Unit, or Property Line:	

LATERAL #3			
SEC	TWP	RGE	COUNTY
Spot Location	1/4	1/4	1/4
Depth of Deviation	Radius of Turn	Direction	Total Length
Measured Total Depth	True Vertical Depth	BHL From Lease, Unit, or Property Line:	

API NO. 0506324620
OTC PROD. UNIT NO. 063-218217

PLEASE TYPE OR USE BLACK INK ONLY
NOTE:

Attach copy of original 1002A
if recompletion or reentry.

OKLAHOMA CORPORATION COMMISSION
Oil & Gas Conservation Division
Post Office Box 52000
Oklahoma City, Oklahoma 73152-2000
Rule 165:10-3-25

RECEIVED

MAR 16 2017

OKLAHOMA CORPORATION COMMISSION 1016EZ

☒ ORIGINAL
☐ AMENDED (Reason)

TYPE OF DRILLING OPERATION

☐ STRAIGHT HOLE ☐ DIRECTIONAL HOLE ☒ HORIZONTAL HOLE
☐ SERVICE WELL

If directional or horizontal, see reverse for bottom hole location.

COUNTY HUGHES SEC 36 TWP 9N RGE 10E
LEASE NAME MEADORS WELL NO. 36-1HX
SE 1/4 NW 1/4 NE 1/4 NW 1/4 FNL OF 1/4 SEC 550 FWL OF 1/4 SEC 1775
ELEVATION Ground 723 Latitude (if known) -96.167146 Longitude (if known) 36.8813299
OPERATOR NAME CALYX ENERGY III, LLC OTC/OCC OPERATOR NO. 23515
ADDRESS 6120 S. YALE #1480
CITY TULSA STATE OK ZIP 74136

COMPLETION REPORT

SPUD DATE 10/19/16
DRLG FINISHED DATE 11/7/16
DATE OF WELL COMPLETION 12/30/16
1st PROD DATE 1/8/17
RECOMP DATE
Longitudinal (if known) 36.8813299

640 Acres
LOCATE WELL

COMPLETION TYPE

☒ SINGLE ZONE
☐ MULTIPLE ZONE
Application Date
COMMINGLED
Application Date
LOCATION 659388/659264 I.D.
EXCEPTION ORDER
INCREASED DENSITY
ORDER NO.

CASING & CEMENT (Form 1002C must be attached)

TYPE	SIZE	WEIGHT	GRADE	FEET	PSI	SAX	TOP OF CMT
CONDUCTOR	20"			29		9	SURFACE
SURFACE	13-3/8"	54.5#	J-55	509		390	SURFACE
INTERMEDIATE	9-5/8"	40#	J-55	3,821		260	2,800
PRODUCTION	5-1/2"	17#	HCP-110	11808		1480	2910
LINER							
						TOTAL DEPTH	11,818

PACKER @ BRAND & TYPE PLUG @ TYPE PLUG @ TYPE
PACKER @ BRAND & TYPE PLUG @ TYPE PLUG @ TYPE

COMPLETION & TEST DATA BY PRODUCING FORMATION

FORMATION MISSISSIPPIAN
SPACING & SPACING ORDER NUMBER (640) 658548/658547 (640) 659264 I.D. Multiunit
CLASS: Oil, Gas, Dry, Inj, Disp, Comm Disp, Svc GAS
PERFORATED INTERVALS 3920-11716
ACID/VOLUME 895 Bbls 15% HCl
FRACTURE TREATMENT (Fluids/Prop Amounts) 299,968 Bbls Fluid
10,329,762 # Sd

Reported to FracFarms

Multiunit Well:

36-09N-10E: 58.4146% 218217 I
01-08N-10E: 41.5854% 218217A I

Min Gas Allowable (165:10-17-7)

Gas Purchaser/Measurer
First Sales Date

BP Energy Co
1/8/2017

INITIAL TEST DATA

INITIAL TEST DATE 1/8/2017
OIL-BBL/DAY 30
OIL-GRAVITY (API) 37
GAS-MCF/DAY 1059
GAS-OIL RATIO CU FT/BBL 35300
WATER-BBL/DAY 2730
PUMPING OR FLOWING Flowing
INITIAL SHUT-IN PRESSURE 1600
CHOKE SIZE 78/128!!
FLOW TUBING PRESSURE 160

AS SUBMITTED

A record of the formations drilled through, and pertinent remarks are presented on the reverse. I declare that I have knowledge of the contents of this report and am authorized by my organization to make this report, which was prepared by me or under my supervision and direction, with the data and facts stated herein to be true, correct, and complete to the best of my knowledge and belief.

SIGNATURE Teresa Wade 3/14/2017 918-949-4224
6120 S. Yale, #1480 Tulsa OK 74136 twade@calyxenergy.com
ADDRESS CITY STATE ZIP EMAIL ADDRESS

SCANNED

JR