

Oklahoma Corporation Commission
Oil & Gas Conservation Division
Post Office Box 52000
Oklahoma City, Oklahoma 73152-2000
Rule 165: 10-3-25

Form 1002A

API No.: 35019222960001

Completion Report

Spud Date: June 03, 1981

OTC Prod. Unit No.:

Drilling Finished Date: June 26, 1981

Amended

1st Prod Date: July 23, 1981

Amend Reason: OPEN AND FRAC PORTION OF UNITIZED INTERVAL AND CHANGE WELL NUMBER

Completion Date: July 29, 1981

Recomplete Date: May 24, 2017

Drill Type: STRAIGHT HOLE

Well Name: HEWITT UNIT (HEWITT UNIT 2052) 22-0502

Purchaser/Measurer:

Location: CARTER 22 4S 2W
NW NE NE NW
2500 FSL 2060 FWL of 1/4 SEC
Latitude: 34.20127027 Longitude: -97.397556
Derrick Elevation: 0 Ground Elevation: 0

First Sales Date:

Operator: XTO ENERGY INC 21003

810 HOUSTON ST
FORT WORTH, TX 76102-6203

Completion Type	
X	Single Zone
	Multiple Zone
	Commingled

Location Exception	
Order No	
There are no Location Exception records to display.	

Increased Density	
Order No	
There are no Increased Density records to display.	

Casing and Cement							
Type	Size	Weight	Grade	Feet	PSI	SAX	Top of CMT
SURFACE	10 3/4	40.5	K-55	664		1530	SURFACE
PRODUCTION	7	20	K-55	2325		1100	288

Liner								
Type	Size	Weight	Grade	Length	PSI	SAX	Top Depth	Bottom Depth
There are no Liner records to display.								

Total Depth: 2325

Packer	
Depth	Brand & Type
There are no Packer records to display.	

Plug	
Depth	Plug Type
There are no Plug records to display.	

Initial Test Data

Test Date	Formation	Oil BBL/Day	Oil-Gravity (API)	Gas MCF/Day	Gas-Oil Ratio Cu FT/BBL	Water BBL/Day	Pumpin or Flowing	Initial Shut-In Pressure	Choke Size	Flow Tubing Pressure
May 24, 2017	HEWITT	19				1690	PUMPING			

Completion and Test Data by Producing Formation

Formation Name: HEWITT

Code: 405HWTT

Class: OIL

Spacing Orders

Order No	Unit Size
67990	UNIT

Perforated Intervals

From	To
904	2203

Acid Volumes

3,300 GALLONS 15% HCL

Fracture Treatments

59,000 GALLONS GEL, 65,000 POUNDS SAND

Formation	Top
-----------	-----

Were open hole logs run? No

Date last log run:

Were unusual drilling circumstances encountered? No

Explanation:

Other Remarks

IRREGULAR SECTION. OPEN LOWER BAYOU 904' - 940', 950' - 970', 990' - 1,040' (2 SPF). FRAC LOWER BAYOU. UPDATE WELL RECORD FROM SHORT NAME OF HEWITT UNIT 2052 TO HEWITT UNIT 22-0502. CORRECT CEMENT VOLUMES ON ORIGINAL 1002A.

FOR COMMISSION USE ONLY

Status: Accepted

1136831

RECEIVED

Form 1002A Rev. 2009

MAY 30 2017

OKLAHOMA CORPORATION COMMISSION

API NO. 019-22296

PLEASE TYPE OR USE BLACK INK ONLY NOTE:

OKLAHOMA CORPORATION COMMISSION Oil & Gas Conservation Division Post Office Box 52000 Oklahoma City, Oklahoma 73152-2000 Rule 165:10-3-25

Attach copy of original 1002A if recompletion or reentry.

ORIGINAL AMENDED (Reason)

Open Frac Part of Unitized Interval to change well #

COMPLETION REPORT

TYPE OF DRILLING OPERATION STRAIGHT HOLE DIRECTIONAL HOLE HORIZONTAL HOLE SERVICE WELL

SPUD DATE 6/3/1981 DRLG FINISHED DATE 6/26/1981 DATE OF WELL COMPLETION 7/29/1981

COUNTY Carter SEC 22 TWP 4S RGE 2W

WELL NO. 22-0502 1st PROD DATE 7/23/1981

LEASE NAME Hewitt Unit

RECOMP DATE 5/24/2017

NE 1/4 NE 1/4 NW 1/4 1/4 FSL 2500 FSL 2060

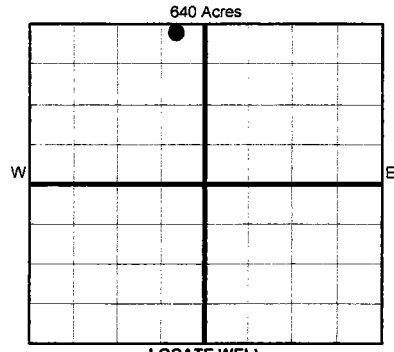
Longitude (if known) -97.397556

ELEVATION N Derrick Ground Latitude (if known) 34.20127027

OPERATOR NAME XTO Energy Inc. OTC/OCC OPERATOR NO. 21003

ADDRESS 210 Park Avenue, Suite 2350

CITY Oklahoma City STATE Oklahoma ZIP 73102



LOCATE WELL

COMPLETION TYPE

SINGLE ZONE MULTIPLE ZONE COMMINGLED LOCATION EXCEPTION ORDER INCREASED DENSITY ORDER NO.

CASING & CEMENT (Form 1002C must be attached)

Table with columns: TYPE, SIZE, WEIGHT, GRADE, FEET, PSI, SAX, TOP OF CMT. Rows include CONDUCTOR, SURFACE, INTERMEDIATE, PRODUCTION, LINER.

PACKER @ BRAND & TYPE PLUG @ TYPE PLUG @ TYPE PLUG @ TYPE

TOTAL DEPTH 2325'

COMPLETION & TEST DATA BY PRODUCING FORMATION

Table with columns: FORMATION, SPACING & SPACING ORDER NUMBER, CLASS, PERFORATED INTERVALS, ACID/VOLUME, FRACTURE TREATMENT.

Min Gas Allowable (165:10-17) OR Oil Allowable (165:10-13-3) Gas Purchaser/Measurer First Sales Date

INITIAL TEST DATA

Table with columns: INITIAL TEST DATE, OIL-BBL/DAY, OIL-GRAVITY (API), GAS-MCF/DAY, GAS-OIL RATIO CU FT/BBL, WATER-BBL/DAY, PUMPING OR FLOWING, INITIAL SHUT-IN PRESSURE, CHOKE SIZE, FLOW TUBING PRESSURE.

AS SUBMITTED

A record of the formations drilled through, and pertinent remarks are presented on the reverse. I declare that I have knowledge of the contents of this report and am authorized by my organization to make this report, which was prepared by me or under my supervision and direction, with the data and facts stated herein to be true, correct, and complete to the best of my knowledge and belief.

SIGNATURE: Debbie Waggoner NAME (PRINT OR TYPE): Debbie Waggoner DATE: 5/26/2017 PHONE NUMBER: 405-319-3243 ADDRESS: 210 Park Avenue, Suite 2350 CITY: Oklahoma City STATE: Ok ZIP: 73102 EMAIL ADDRESS: debbie_waggoner@xtoenergy.com

