

Oklahoma Corporation Commission
 Oil & Gas Conservation Division
 Post Office Box 52000
 Oklahoma City, Oklahoma 73152-2000
 Rule 165: 10-3-25

Form 1002A

API No.: 35153236000000

Completion Report

Spud Date: March 04, 2017

OTC Prod. Unit No.: 153-21866

Drilling Finished Date: April 18, 2017

1st Prod Date: May 05, 2017

Completion Date: May 04, 2017

Drill Type: HORIZONTAL HOLE

Min Gas Allowable: Yes

Well Name: BROWN TRUST 31-20-17 1H

Purchaser/Measurer: ENABLE

Location: WOODWARD 30 20N 17W
 SW SE SE SE
 300 FSL 620 FEL of 1/4 SEC
 Latitude: 36.1740518 Longitude: -99.04667837
 Derrick Elevation: 1835 Ground Elevation: 1805

First Sales Date: 05/05/2017

Operator: TAPSTONE ENERGY LLC 23467

100 E MAIN ST
 OKLAHOMA CITY, OK 73104-2509

Completion Type	
X	Single Zone
	Multiple Zone
	Commingled

Location Exception	
Order No	
664732	

Increased Density	
Order No	
There are no Increased Density records to display.	

Casing and Cement							
Type	Size	Weight	Grade	Feet	PSI	SAX	Top of CMT
SURFACE	13 3/8	48	J-55	610	900	524	SURFACE
INTERMEDIATE	9 5/8	40	J/L	6449	2857	1190	SURFACE
PRODUCTION	5 1/2	20	P-110	15151	9500	2075	8145

Liner								
Type	Size	Weight	Grade	Length	PSI	SAX	Top Depth	Bottom Depth
There are no Liner records to display.								

Total Depth: 15151

Packer	
Depth	Brand & Type
10080	BAKER HORNET

Plug	
Depth	Plug Type
There are no Plug records to display.	

Initial Test Data

Test Date	Formation	Oil BBL/Day	Oil-Gravity (API)	Gas MCF/Day	Gas-Oil Ratio Cu FT/BBL	Water BBL/Day	Pumpin or Flowing	Initial Shut-In Pressure	Choke Size	Flow Tubing Pressure
Jun 04, 2017	MISSISSIPPIAN (LESS UPPER CHESTER)	158	39	862	5456	2097	FLOWING / GAS LIFT		30/64	783

Completion and Test Data by Producing Formation

Formation Name: MISSISSIPPIAN (LESS UPPER CHESTER)

Code: 359MSLUC

Class: OIL

Spacing Orders

Order No	Unit Size
661664	640

Perforated Intervals

From	To
10425	15082

Acid Volumes

54,390 GALLONS 15% HCL

Fracture Treatments

236,996 BARRELS, 9,205388 POUNDS PROPPANT

Formation	Top
BASE HEEBNER	6164
TONKAWA	6604
COTTAGE GROVE	7060
HOGSHOOTER	7338
OSWEGO LIMESTONE	7725
ATOKA	8285
MISSISSIPPIAN	8714

Were open hole logs run? No

Date last log run:

Was H2S Encountered? Yes

Depth Encountered: 10298

Were unusual drilling circumstances encountered? No

Explanation:

Other Remarks

There are no Other Remarks.

Lateral Holes

Sec: 31 TWP: 20N RGE: 17W County: DEWEY

NW SE SE SE

384 FSL 654 FEL of 1/4 SEC

Depth of Deviation: 9579 Radius of Turn: 1103 Direction: 179 Total Length: 4469

Measured Total Depth: 15151 True Vertical Depth: 10298 End Pt. Location From Release, Unit or Property Line: 384

FOR COMMISSION USE ONLY

1136898

Status: Accepted

RECEIVED

Form 1002A Rev. 2009

JUN 06 2017

API NO. 35-153-23600
OTC PROD. UNIT NO. 15321866

PLEASE TYPE OR USE BLACK INK ONLY
NOTE:

Attach copy of original 1002A if recompletion or reentry.

OKLAHOMA CORPORATION COMMISSION
Oil & Gas Conservation Division
Post Office Box 52000
Oklahoma City, Oklahoma 73152-2000
Rule 165:10-3-25

OKLAHOMA CORPORATION COMMISSION

ORIGINAL
AMENDED (Reason)

COMPLETION REPORT

TYPE OF DRILLING OPERATION
STRAIGHT HOLE
DIRECTIONAL HOLE
HORIZONTAL HOLE
SERVICE WELL

SPUD DATE 3/4/2017

DRLG FINISHED DATE 4/18/2017

DATE OF WELL COMPLETION 5/4/2017

1st PROD DATE 5/5/2017

RECOMP DATE

Longitude (if known) -99.04667837

COUNTY WOODWARD SEC 30 TWP 20N RGE 17W

LEASE NAME BROWN TRUST 31-20-17 WELL NO. 1H

SW 1/4 SE 1/4 SE 1/4 SE 1/4 FSL OF 1/4 SEC 300' FEL OF 1/4 SEC 620'

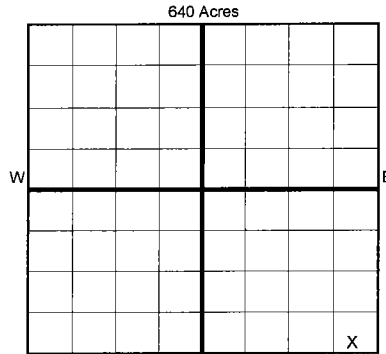
ELEVATION N Derrick 1,835' Ground 1,805' Latitude (if known) 36.1740518

OPERATOR NAME Tapstone Energy, LLC

OTC/OCC OPERATOR NO. 23467

ADDRESS PO Box 1608

CITY OKC STATE OK ZIP 73101-1608



LOCATE WELL

COMPLETION TYPE

Form with completion type options: SINGLE ZONE, MULTIPLE ZONE, COMMINGLED, LOCATION, EXCEPTION ORDER, INCREASED DENSITY ORDER NO.

CASING & CEMENT (Form 1002C must be attached)

Table with columns: TYPE, SIZE, WEIGHT, GRADE, FEET, PSI, SAX, TOP OF CMT. Rows include CONDUCTOR, SURFACE, INTERMEDIATE, PRODUCTION, LINER.

PACKER @ 10,080' BRAND & TYPE BKR HORNET PLUG @ TYPE PLUG @ TYPE
PACKER @ BRAND & TYPE PLUG @ TYPE PLUG @ TYPE

TOTAL DEPTH 15,151'

COMPLETION & TEST DATA BY PRODUCING FORMATION

Table with columns: FORMATION, SPACING & SPACING ORDER NUMBER, CLASS, PERFORATED INTERVALS, ACID/VOLUME, FRACTURE TREATMENT. Includes handwritten notes like '359MSLUC' and 'Monitor Report to Free Focus'.

Min Gas Allowable (165:10-17-7)
OR
Oil Allowable (165:10-13-3)

Gas Purchaser/Measurer ENABLE
First Sales Date 5/5/2017

INITIAL TEST DATA

Table with columns: INITIAL TEST DATE, OIL-BBL/DAY, OIL-GRAVITY (API), GAS-MCF/DAY, GAS-OIL RATIO CU FT/BBL, WATER-BBL/DAY, PUMPING OR FLOWING, INITIAL SHUT-IN PRESSURE, CHOKE SIZE, FLOW TUBING PRESSURE.

AS SUBMITTED

A record of the formations drilled through, and pertinent remarks are presented on the reverse. I declare that I have knowledge of the contents of this report and am authorized by my organization to make this report, which was prepared by me or under my supervision and direction, with the data and facts stated herein to be true, correct, and complete to the best of my knowledge and belief.

SIGNATURE: Bryan Rother
NAME (PRINT OR TYPE): Bryan Rother
DATE: 6/5/2017
PHONE NUMBER: 405-702-1600
ADDRESS: PO Box 1608, Oklahoma City, OK 73101-1608
EMAIL ADDRESS: regulatory@tapstoneenergy.com

PLEASE TYPE OR USE BLACK INK ONLY
FORMATION RECORD

Give formation names and tops, if available, or descriptions and thickness of formations drilled through. Show intervals cored or drillstem tested.

LEASE NAME BROWN TRUST 31-20-17 WELL NO. 1H

NAMES OF FORMATIONS	TOP
BASE HEEBNER	6164'
TONKAWA	6604'
COTTAGE GROVE	7060'
HOGSHOOTER	7338'
OSWEGO LIMESTONE	7725'
ATOKA	8285'
MISSISSIPPIAN	8714'

FOR COMMISSION USE ONLY

ITD on file YES NO

APPROVED _____ DISAPPROVED _____

2) Reject Codes

Were open hole logs run? _____ yes no

Date Last log was run _____

Was CO₂ encountered? _____ yes no at what depths? _____

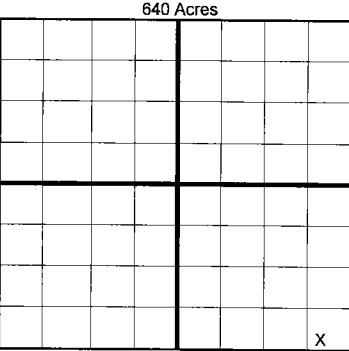
Was H₂S encountered? yes _____ no at what depths? 10298 TVD

Were unusual drilling circumstances encountered? _____ yes no

If yes, briefly explain below

Other remarks:

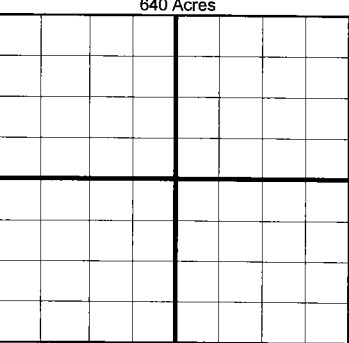
per Bryan



If more than three drainholes are proposed, attach a separate sheet indicating the necessary information.

Direction must be stated in degrees azimuth. Please note, the horizontal drainhole and its end point must be located within the boundaries of the lease or spacing unit.

Directional surveys are required for all drainholes and directional wells.



BOTTOM HOLE LOCATION FOR DIRECTIONAL HOLE

SEC	TWP	RGE	COUNTY				
Spot Location	1/4	1/4	1/4	1/4	Feet From 1/4 Sec Lines	FNL	FEL
Measured Total Depth	True Vertical Depth		BHL From Lease, Unit, or Property Line:				

BOTTOM HOLE LOCATION FOR HORIZONTAL HOLE: (LATERALS)

LATERAL #1

SEC	TWP	RGE	COUNTY				
31	20N	17W	DEWEY				
Spot Location	SE 1/4	SE 1/4	SE 1/4	Feet From 1/4 Sec Lines	FSL 384'	FEL 654'	
Depth of Deviation	9,579'	Radius of Turn	1,103'	Direction	179	Total Length	4,469'
Measured Total Depth	True Vertical Depth		BHL From Lease, Unit, or Property Line:				
	15,151'		10,298'		384'		

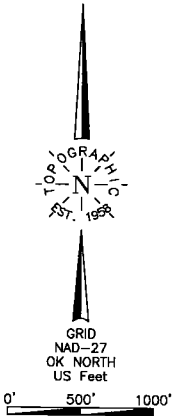
LATERAL #2

SEC	TWP	RGE	COUNTY			
Spot Location	1/4	1/4	1/4	Feet From 1/4 Sec Lines	FSL	FWL
Depth of Deviation	Radius of Turn		Direction		Total Length	
Measured Total Depth	True Vertical Depth		BHL From Lease, Unit, or Property Line:			

LATERAL #3

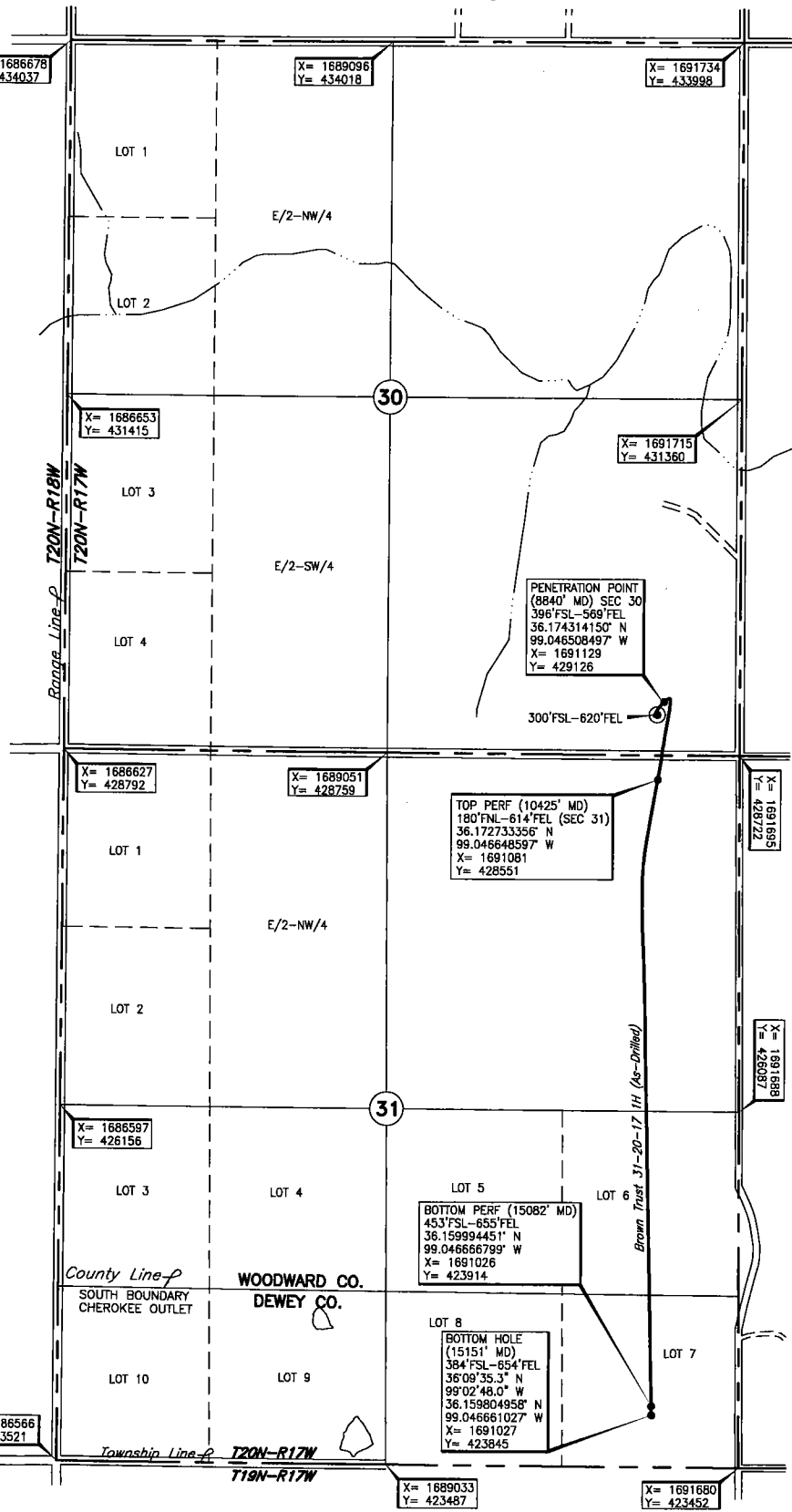
SEC	TWP	RGE	COUNTY			
Spot Location	1/4	1/4	1/4	Feet From 1/4 Sec Lines	FSL	FWL
Depth of Deviation	Radius of Turn		Direction		Total Length	
Measured Total Depth	True Vertical Depth		BHL From Lease, Unit, or Property Line:			

WOODWARD/DEWEY County, Oklahoma
 300'FSL-620'FEL Section 30 Township 20N Range 17W I.M.



Operator: TAPSTONE ENERGY
 Lease Name: BROWN TRUST 31-20-17
 Topography & Vegetation Loc. fell on pad being built in wheat field, NW-SE pipeline in green
 Good Drill Site? Yes
 Reference Stakes or Alternate Location Stakes Set None
 Best Accessibility to Location From South off county road
 Distance & Direction From the Jct. of U.S. Hwy. 270 and St. Hwy. 183 South, go ±0.5 mile NW on U.S. Hwy. 270, then ±4.5 miles West to the SE corner of Sec. 30-T20N-R17W.

Well No.: 1H
ELEVATION:
1805' Gr. at Stake



DATUM: NAD-27
 LAT: 36°10'26.6"N
 LONG: 99°02'48.0"W
 LAT: 36.174051834°N
 LONG: 99.046678371°W
 STATE PLANE
 COORDINATES: (US Feet)
 ZONE: OK NORTH
 X: 1691078
 Y: 429031

275972 Date of Drawing: May 10, 2017
 Invoice # 269299 Date Staked: Jan. 30, 2017 JP

FINAL AS-DRILLED PLAT

AS-DRILLED INFORMATION
 FURNISHED BY TAPSTONE ENERGY