

Oklahoma Corporation Commission  
Oil & Gas Conservation Division  
Post Office Box 52000  
Oklahoma City, Oklahoma 73152-2000  
Rule 165: 10-3-25

Form 1002A

API No.: 35019262840000

**Completion Report**

Spud Date: January 18, 2018

OTC Prod. Unit No.:

Drilling Finished Date: January 20, 2018

1st Prod Date: August 02, 2018

Completion Date: July 31, 2018

**Drill Type: STRAIGHT HOLE**

Well Name: COLINE, C W 1

Purchaser/Measurer:

Location: CARTER 21 3S 2W  
NW NW SE SE  
1155 FSL 1155 FEL of 1/4 SEC  
Latitude: 34.27772 Longitude: -97.40853  
Derrick Elevation: 0 Ground Elevation: 1014

First Sales Date:

Operator: CHATHAM VICKIE R 17284

4938 OIL CITY RD  
WILSON, OK 73463-6510

Completion Type		Location Exception		Increased Density	
X	Single Zone	Order No		Order No	
	Multiple Zone	There are no Location Exception records to display.		There are no Increased Density records to display.	
	Commingled				

Casing and Cement							
Type	Size	Weight	Grade	Feet	PSI	SAX	Top of CMT
PRODUCTION	5.5	15.5	J-55	1089		279	SURFACE

Liner								
Type	Size	Weight	Grade	Length	PSI	SAX	Top Depth	Bottom Depth
There are no Liner records to display.								

**Total Depth: 1088**

Packer		Plug	
Depth	Brand & Type	Depth	Plug Type
There are no Packer records to display.		There are no Plug records to display.	

Initial Test Data										
Test Date	Formation	Oil BBL/Day	Oil-Gravity (API)	Gas MCF/Day	Gas-Oil Ratio Cu FT/BBL	Water BBL/Day	Pumpin or Flowing	Initial Shut-In Pressure	Choke Size	Flow Tubing Pressure
Aug 02, 2018	PONTOTOC	3	24			30	PUMPING			

**Completion and Test Data by Producing Formation**

Formation Name: PONTOTOC		Code: 419PNTC	Class: OIL
<b>Spacing Orders</b>		<b>Perforated Intervals</b>	
<b>Order No</b>	<b>Unit Size</b>	<b>From</b>	<b>To</b>
There are no Spacing Order records to display.		685	939
<b>Acid Volumes</b>		<b>Fracture Treatments</b>	
500 GALLONS		NONE	

Formation	Top
PONTOTOC	50

Were open hole logs run? Yes

Date last log run:

Were unusual drilling circumstances encountered? No

Explanation:

<b>Other Remarks</b>
There are no Other Remarks.

<b>FOR COMMISSION USE ONLY</b>	
Status: Accepted	1140607

API NO. 019-26284  
OTC PROD.  
UNIT NO.

(PLEASE TYPE OR USE BLACK INK ONLY)

OKLAHOMA CORPORATION COMMISSION

Oil & Gas Conservation Division

Post Office Box 52000

Oklahoma City, Oklahoma 73152-2000

Rule 165:10-3-25

RECEIVED

Form 1002A

Rev. 2009

AUG 16 2018

OKLAHOMA CORPORATION COMMISSION

☒ ORIGINAL  
☐ AMENDED (Reason)

TYPE OF DRILLING OPERATION

☒ STRAIGHT HOLE ☐ DIRECTIONAL HOLE ☐ HORIZONTAL HOLE  
☒ SERVICE WELL

If directional or horizontal, see reverse for bottom hole location.

COUNTY CARTER SEC 21 TWP 3S RGE 2W  
LEASE NAME COLINE, CW  
NW 1/4 NW 1/4 SE 1/4 SE 1/4 FSL OF 1/4 SEC 1155  
ELEVATION Ground 1014  
Derrick FL  
Latitude (if known) 34.27772  
WELL NO. CW#1  
FSL OF 1/4 SEC 1485  
RECOMP DATE  
1st PROD DATE 8/2/2018  
DATE OF WELL COMPLETION 7/31/2018  
DATE 1/18/2018  
DRLG FINISHED DATE 1/20/2018  
Longitude (if known) -97.40853  
OPERATOR NAME VICKIE R. CHATHAM  
OTC/OCC OPERATOR NO. 17284-0  
ADDRESS 4938 OIL CITY RD.  
CITY WILSON STATE OKLA. ZIP 73463

640 Acres  
LOCATE WELL  
W E  
X

COMPLETION TYPE

☒ SINGLE ZONE  
☐ MULTIPLE ZONE  
Application Date  
☐ COMMINGLED  
Application Date  
LOCATION EXCEPTION  
ORDER NO.  
INCREASED DENSITY  
ORDER NO.

CASING & CEMENT (Form 1002C must be attached)

TYPE	SIZE	WEIGHT	GRADE	FEET	PSI	SAX	TOP OF CMT
CONDUCTOR							
SURFACE							
INTERMEDIATE							
PRODUCTION	5.5	15.5	J-55	1089		279	SURFACE
LINER							
TOTAL DEPTH						1,088	

PACKER @ BRAND & TYPE PLUG @ TYPE PLUG @ TYPE  
PACKER @ BRAND & TYPE PLUG @ TYPE PLUG @ TYPE

COMPLETION & TEST DATA BY PRODUCING FORMATION

419 PNTC

FORMATION	PONTOTOC						No Frac
SPACING & SPACING ORDER NUMBER							
CLASS: Oil, Gas, Dry, Inj, Disp, Comm Disp, Svc	OIL						
PERFORATED INTERVALS	685-695						
	931-939						
ACID/VOLUME	500 GAL						
FRACTURE TREATMENT (Fluids/Prop Amounts)	None						

Min Gas Allowable (165:10-17-7)

Gas Purchaser/Measurer

☐

OR

First Sales Date

INITIAL TEST DATA

Oil Allowable (165:10-13-3)

INITIAL TEST DATE	8/2/2018					
OIL-BBL/DAY	3					
OIL-GRAVITY (API)	24					
GAS-MCF/DAY						
GAS-OIL RATIO CU FT/BBL						
WATER-BBL/DAY	30					
PUMPING OR FLOWING	PUMPING					
INITIAL SHUT-IN PRESSURE	0					
CHOKE SIZE						
FLOW TUBING PRESSURE						

A record of the formations drilled through, and pertinent remarks are presented on the reverse. I declare that I have knowledge of the contents of this report and am authorized by my organization to make this report, which was prepared by me or under my supervision and direction, with the data and facts stated herein to be true, correct, and complete to the best of my knowledge and belief.

RANDY MILSON 8/14/2018  
SIGNATURE NAME (PRINT OR TYPE) DATE PHONE NUMBER  
4938 OIL CITY RD. WILSON OK 73463 rmilson@chathamdozerservice.com  
ADDRESS CITY STATE ZIP EMAIL ADDRESS

AS SUBMITTED

CBL shows good bond DTM

## FORMATION RECORD

LEASE NAME COLINE WELL NO. CW#1

NAMES OF FORMATIONS	TOP
PONTOTOC	50

FOR COMMISSION USE ONLY	
ITD on file <input type="checkbox"/> YES <input type="checkbox"/> NO	
APPROVED      DISAPPROVED	2) Reject Codes

Were open hole logs run?      X yes    \_\_\_ no

Date Last log was run \_\_\_\_\_

Was CO<sub>2</sub> encountered?      \_\_\_ yes    X no    at what depths? \_\_\_\_\_

Was H<sub>2</sub>S encountered?      \_\_\_ yes    X no    at what depths? \_\_\_\_\_

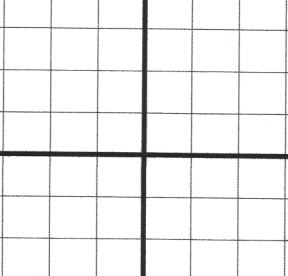
Were unusual drilling circumstances encountered?      \_\_\_ yes    X no  
If yes, briefly explain below


640 Acres

A 10x10 grid representing 640 acres. The grid is divided into four 5x5 quadrants by a thick black cross. The text '640 Acres' is centered at the top of the grid.

Directional surveys are required for all drainholes and directional wells.

640 Acres

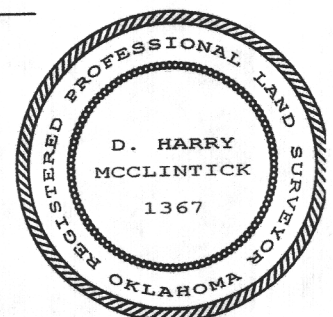


SEC	TWP	RGE	COUNTY			
Spot Location				Feet From 1/4 Sec Lines	FSL	FWL
1/4	1/4	1/4	1/4			
Measured Total Depth		True Vertical Depth	BHL From Lease, Unit, or Property Line:			

LATERAL #1						
SEC	TWP	RGE	COUNTY			
Spot Location				Feet From 1/4 Sec Lines	FSL	FWL
1/4	1/4	1/4	1/4			
Depth of Deviation		Radius of Turn	Direction	Total Length		
Measured Total Depth		True Vertical Depth	BHL From Lease, Unit, or Property Line:			

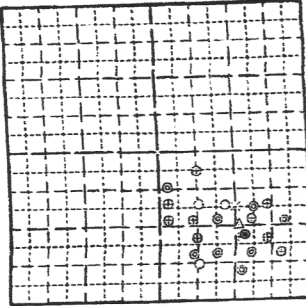
SEC	TWP	RGE	COUNTY			
Spot Location			Feet From 1/4 Sec Lines		FSL	FWL
1/4	1/4	1/4	1/4			
Depth of Deviation		Radius of Turn	Direction	Total Length		
Measured Total Depth		True Vertical Depth	BHL From Lease, Unit, or Property Line:			

SEC	TWP	RGE	COUNTY			
Spot Location				Feet From 1/4 Sec Lines	FSL	FWL
1/4	1/4	1/4	1/4			
Depth of Deviation		Radius of Turn	Direction	Total Length		
Measured Total Depth		True Vertical Depth	BHL From Lease, Unit, or Property Line:			



Misc. Wells in SE/4 of Section 21, Township 3 South, Range 2 West,  
Carter County, Oklahoma.

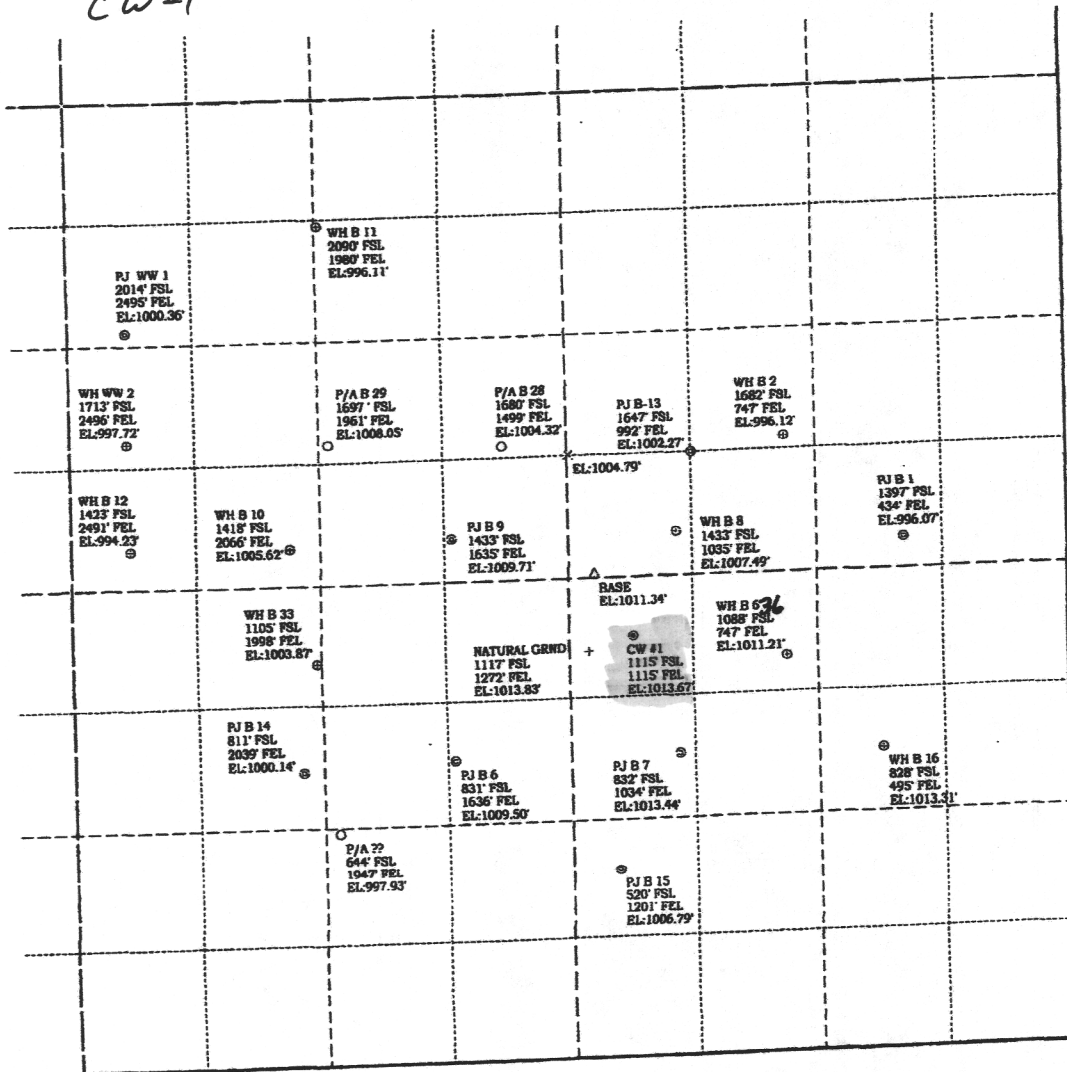
\$12 per ft.



SCALE 1" = 300'

- ⊙ Proposed Well
- ⊙ Pump Jack
- ⊙ Well Head
- Plugged / Abandon Well

Coline  
CW #1



(C) Copyright 2017 M & M Land Surveying, Inc.

NO.	REVISION	DATE	BY

SURV. BY: D. Harry McClintick  
DRAWN BY: Harry McClintick  
APP. BY: D. Harry McClintick

**JIMMY CHATHAM**  
SURVEYING AND MAPPING BY  
M & M LAND SURVEYING, Inc.  
ARDMORE, OKLAHOMA

SCALE: 1in. = 300ft

DATE: 12/7/17

FILE: 17521

DRAWING NUMBER:

17521.pcs

SHEET 1 of 1