

Oklahoma Corporation Commission  
Oil & Gas Conservation Division  
Post Office Box 52000  
Oklahoma City, Oklahoma 73152-2000  
Rule 165: 10-3-25

Form 1002A

API No.: 35049251640001

**Completion Report**

Spud Date: November 29, 2017

OTC Prod. Unit No.: 049-223090

Drilling Finished Date: January 05, 2018

1st Prod Date: April 26, 2018

Completion Date: March 20, 2018

**Drill Type: HORIZONTAL HOLE**

Min Gas Allowable: Yes

Well Name: LINDSEY 1-03-34LWH

Purchaser/Measurer: WOODFORD EXPRESS

Location: GARVIN 3 1N 2W  
NW NW SW SE  
1200 FSL 2400 FEL of 1/4 SEC  
Derrick Elevation: 0 Ground Elevation: 985

First Sales Date: 04/26/2018

Operator: RIMROCK RESOURCE OPERATING LLC 23802

20 E 5TH ST STE 1300  
TULSA, OK 74103-4462

Completion Type	
X	Single Zone
	Multiple Zone
	Commingled

Location Exception	
Order No	
681835	

Increased Density	
Order No	
There are no Increased Density records to display.	

Casing and Cement							
Type	Size	Weight	Grade	Feet	PSI	SAX	Top of CMT
SURFACE	13 3/8	54.5	J-55	1516		825	SURFACE
INTERMEDIATE	9 5/8	40	P-110	7716		1040	SURFACE
PRODUCTION	5 1/2	20	DWC	17680		1805	6506

Liner								
Type	Size	Weight	Grade	Length	PSI	SAX	Top Depth	Bottom Depth
There are no Liner records to display.								

**Total Depth: 17695**

Packer	
Depth	Brand & Type
There are no Packer records to display.	

Plug	
Depth	Plug Type
There are no Plug records to display.	

Initial Test Data

Test Date	Formation	Oil BBL/Day	Oil-Gravity (API)	Gas MCF/Day	Gas-Oil Ratio Cu FT/BBL	Water BBL/Day	Pumpin or Flowing	Initial Shut-In Pressure	Choke Size	Flow Tubing Pressure
May 19, 2018	WOODFORD	707	43	951	1345	1354	PUMPING	475	OPEN	325

**Completion and Test Data by Producing Formation**

Formation Name: WOODFORD

Code: 319WDFD

Class: OIL

**Spacing Orders**

Order No	Unit Size
658660	640
670032	640
682775	MULTIUNIT

**Perforated Intervals**

From	To
9210	17626

**Acid Volumes**

56,000 GALLONS 15% HCL

**Fracture Treatments**

424,000 BARRELS FRAC FLUID AND 20,605,000 POUNDS SAND

Formation	Top
HOGSHOOTER	5315
LAYTON	6097
CHECKERBOARD	6505
GIBSON	7100
HART	7260
SPRINGER	7533
WOODFORD	8169
CANEY	8866
MAYES	8879
SYCAMORE	8906

Were open hole logs run? Yes

Date last log run: December 13, 2017

Were unusual drilling circumstances encountered? No

Explanation:

**Other Remarks**

There are no Other Remarks.

**Lateral Holes**

Sec: 34 TWP: 2N RGE: 2W County: GARVIN

NW NW NW NE

169 FNL 2407 FEL of 1/4 SEC

Depth of Deviation: 7000 Radius of Turn: 750 Direction: 360 Total Length: 10695

Measured Total Depth: 17695 True Vertical Depth: 8270 End Pt. Location From Release, Unit or Property Line: 169

**FOR COMMISSION USE ONLY**

1140737



RECEIVED

Form 1002A Rev. 2009

AUG 27 2018

OKLAHOMA CORPORATION COMMISSION

API NO. 049-25164  
OTC PROD. UNIT NO. 049-223090

PLEASE TYPE OR USE BLACK INK ONLY  
NOTE:

Attach copy of original 1002A if recompletion or reentry.

OKLAHOMA CORPORATION COMMISSION  
Oil & Gas Conservation Division  
Post Office Box 52000  
Oklahoma City, Oklahoma 73152-2000  
Rule 165:10-3-25

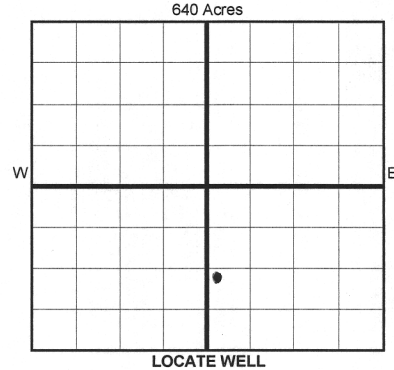
ORIGINAL  
 AMENDED (Reason)

COMPLETION REPORT

TYPE OF DRILLING OPERATION  
 STRAIGHT HOLE  DIRECTIONAL HOLE  HORIZONTAL HOLE  
 SERVICE WELL  
If directional or horizontal, see reverse for bottom hole location.

SPUD DATE 11/29/2017  
DRLG FINISHED DATE 1/5/2018  
DATE OF WELL COMPLETION 3/20/2018  
1st PROD DATE 4/26/2018  
RECOMP DATE

COUNTY Garvin SEC 03 TWP 1N RGE 2W  
LEASE NAME Lindsey  
WELL NO. 03-34LW  
NW 1/4 NW 1/4 SW 1/4 SE 1/4 FSL OF 1200 FEL 2400  
ELEVATION 985  
OPERATOR NAME Rimrock Resource Operating, LLC  
ADDRESS 20 East 5th Street, Suite 1300  
CITY Tulsa STATE OK ZIP 74103



COMPLETION TYPE  
 SINGLE ZONE  
 MULTIPLE ZONE  
 COMMINGLED  
LOCATION 601835 F.O. #67251T  
EXCEPTION ORDER INCREASED DENSITY ORDER NO.

CASING & CEMENT (Form 1002C must be attached)

TYPE	SIZE	WEIGHT	GRADE	FEET	PSI	SAX	TOP OF CMT
CONDUCTOR							
SURFACE	13 3/8	54.5#	J-55	1,516'		825	Surf.
INTERMEDIATE	9 5/8	40#	P-110	7,716'		1040	Surf.
PRODUCTION	5 1/2	20#	DWC	17,680'		1805	6,506'
LINER							
TOTAL DEPTH							17,695'

PACKER @ BRAND & TYPE PLUG @ TYPE PLUG @ TYPE  
PACKER @ BRAND & TYPE PLUG @ TYPE PLUG @ TYPE

COMPLETION & TEST DATA BY PRODUCING FORMATION 319WDFD

FORMATION	Woodford			
SPACING & SPACING ORDER NUMBER	#658660 \ 640 ac.	#670032 \ 640 ac.	682775 F.O. (Multunit)	Reported to Frac Focus
CLASS: Oil, Gas, Dry, Inj, Disp, Comm Disp, Svc	Oil			
PERFORATED INTERVALS	9,210' - 17,626'			
ACID/VOLUME	56,000 gals.	15% HCL		
FRACTURE TREATMENT (Fluids/Prop Amounts)	424,000 bbls. & 20,605,000 # sand			

Min Gas Allowable (165:10-17-7) OR Oil Allowable (165:10-13-3)  
Woodford Express 8/26/2018  
Woodford Express 4/26/2018

INITIAL TEST DATA

INITIAL TEST DATE	5/19/2018
OIL-BBL/DAY	707
OIL-GRAVITY (API)	43.0
GAS-MCF/DAY	951
GAS-OIL RATIO CU FT/BBL	1345:1
WATER-BBL/DAY	1354
PUMPING OR FLOWING	Pumping
INITIAL SHUT-IN PRESSURE	475#
CHOKE SIZE	Open
FLOW TUBING PRESSURE	325#

AS SUBMITTED

A record of the formations drilled through, and pertinent remarks are presented on the reverse. I declare that I have knowledge of the contents of this report and am authorized by my organization to make this report, which was prepared by me or under my supervision and direction, with the data and facts stated herein to be true, correct, and complete to the best of my knowledge and belief.  
Signature: Paulette Kadow  
NAME (PRINT OR TYPE): Paulette Kadow  
DATE: 8/22/2018  
PHONE NUMBER: 918-301-4717  
ADDRESS: 20 East 5th Street, Suite 1300  
CITY: Tulsa STATE: OK ZIP: 74103  
EMAIL ADDRESS: pkadow@rimrockresource.com



9/4/18

01

RECEIVED

Form 1002A Rev. 2009

AUG 06 2018

1016EZ

API NO. 049-25165  
OTC PROD. UNIT NO. 049-223301

PLEASE TYPE OR USE BLACK INK ONLY  
NOTE:

Attach copy of original 1002A if recompletion or reentry.

OKLAHOMA CORPORATION COMMISSION  
Oil & Gas Conservation Division  
Post Office Box 52000  
Oklahoma City, Oklahoma 73152-2000  
Rule 165:10-3-25

OKLAHOMA CORPORATION COMMISSION

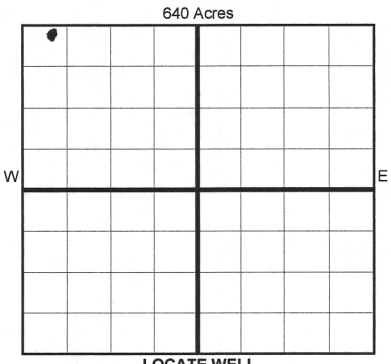
ORIGINAL  
 AMENDED (Reason)

A: 223301 I

COMPLETION REPORT

TYPE OF DRILLING OPERATION  
 STRAIGHT HOLE  DIRECTIONAL HOLE  HORIZONTAL HOLE  
 SERVICE WELL

SPUD DATE 1/12/2018  
DRLG FINISHED DATE 2/27/2018



COUNTY Garvin SEC 30 TWP 4N RGE 4W  
LEASE NAME Morgan

DATE OF WELL COMPLETION 4/4/2018  
1st PROD DATE 4/23/2018

NE 1/4 NW 1/4 NW 1/4 NW 1/4 FNI OF 235 FWL 350  
ELEVATION Ground 1112 Latitude (if known)

RECOMP DATE  
Longitude (if known)

OPERATOR NAME Rimrock Resource Operating, LLC

OTC/OCC OPERATOR NO. 23802

ADDRESS 20 East 5th Street, Suite 1300

CITY Tulsa STATE OK ZIP 74103

COMPLETION TYPE  
 SINGLE ZONE  
 MULTIPLE ZONE  
Application Date  
COMINGLED  
Application Date  
LOCATION  
EXCEPTION ORDER  
INCREASED DENSITY  
ORDER NO.

CASING & CEMENT (Form 1002C must be attached)								
TYPE	SIZE	WEIGHT	GRADE	FEET	PSI	SAX	TOP OF CMT	
CONDUCTOR								
SURFACE	13 3/8	54.5#	J-55	1,519'		825	Surf.	
INTERMEDIATE	9 5/8	40#	P-110	11,069'		1285	Surf.	
PRODUCTION	5 1/2	20#	DWC	17,218'		1225	11,120'	
LINER								
							TOTAL DEPTH	17,233'

PACKER @ \_\_\_\_\_ BRAND & TYPE \_\_\_\_\_ PLUG @ \_\_\_\_\_ TYPE \_\_\_\_\_ PLUG @ \_\_\_\_\_ TYPE \_\_\_\_\_  
PACKER @ \_\_\_\_\_ BRAND & TYPE \_\_\_\_\_ PLUG @ \_\_\_\_\_ TYPE \_\_\_\_\_ PLUG @ \_\_\_\_\_ TYPE \_\_\_\_\_

COMPLETION & TEST DATA BY PRODUCING FORMATION							
FORMATION	Woodford						
SPACING & SPACING ORDER NUMBER	#661597 \ 640 ac.						
CLASS: Oil, Gas, Dry, Inj, Disp, Comm Disp, Svc	Gas						
PERFORATED INTERVALS	13,560' - 17,167'						
ACID/VOLUME	25,000 gals 15% HCL						
FRACTURE TREATMENT (Fluids/Prop Amounts)	188,000 bbls + 6,117,000# of sand.						

Reported to Frac Focus

SCANNED

Min Gas Allowable (165:10-17-7) OR Oil Allowable (165:10-13-3) Gas Purchaser/Measurer Woodford Express First Sales Date 4/23/2018

INITIAL TEST DATA	
INITIAL TEST DATE	6/5/2018
OIL-BBL/DAY	166
OIL-GRAVITY ( API)	65.0
GAS-MCF/DAY	5052
GAS-OIL RATIO CU FT/BBL	30,433:1
WATER-BBL/DAY	605
PUMPING OR FLOWING	Flowing
INITIAL SHUT-IN PRESSURE	1100#
CHOKE SIZE	50/64"
FLOW TUBING PRESSURE	400#

AS SUBMITTED

A record of the formations drilled through, and pertinent remarks are presented on the reverse. I declare that I have knowledge of the contents of this report and am authorized by my organization to make this report, which was prepared by me or under my supervision and direction, with the data and facts stated herein to be true, correct, and complete to the best of my knowledge and belief.  
Signature: Paulette Kadow  
NAME (PRINT OR TYPE): Paulette Kadow  
DATE: 8/2/2018  
PHONE NUMBER: 918-301-4717  
ADDRESS: 20 East 5th Street, Suite 1300  
CITY: Tulsa STATE: OK ZIP: 74103  
EMAIL ADDRESS: pkadow@rimrockresource.com

EZ

JK