

Oklahoma Corporation Commission
Oil & Gas Conservation Division
Post Office Box 52000
Oklahoma City, Oklahoma 73152-2000
Rule 165: 10-3-25

Form 1002A

API No.: 35047252010000

Completion Report

Spud Date: October 03, 2019

OTC Prod. Unit No.:

Drilling Finished Date: October 07, 2019

1st Prod Date:

Completion Date: October 08, 2019

Drill Type: STRAIGHT HOLE

Well Name: JANIS 1

Purchaser/Measurer:

Location: GARFIELD 1 22N 3W
C NW SE SE
990 FSL 990 FEL of 1/4 SEC
Derrick Elevation: 1117 Ground Elevation: 1105

First Sales Date:

Operator: NEON GAS LLC 24394

14551 S MIDWEST BLVD
EDMOND, OK 73034-9335

Completion Type		Location Exception		Increased Density	
	Single Zone	Order No		Order No	
	Multiple Zone	There are no Location Exception records to display.		There are no Increased Density records to display.	
	Commingled				

Casing and Cement							
Type	Size	Weight	Grade	Feet	PSI	SAX	Top of CMT
SURFACE	8 5/8	24	J-55	253		175	SURFACE

Liner								
Type	Size	Weight	Grade	Length	PSI	SAX	Top Depth	Bottom Depth
There are no Liner records to display.								

Total Depth: 2350

Packer		Plug	
Depth	Brand & Type	Depth	Plug Type
There are no Packer records to display.		There are no Plug records to display.	

Initial Test Data										
Test Date	Formation	Oil BBL/Day	Oil-Gravity (API)	Gas MCF/Day	Gas-Oil Ratio Cu FT/BBL	Water BBL/Day	Pumpin or Flowing	Initial Shut-In Pressure	Choke Size	Flow Tubing Pressure
There are no Initial Data records to display.										
Completion and Test Data by Producing Formation										

Formation Name: NONE	Code:	Class: DRY
----------------------	-------	------------

Formation	Top
HERINGTON	930
BURLINGAME	2260

Were open hole logs run? Yes
Date last log run: October 08, 2019

Were unusual drilling circumstances encountered? No
Explanation:

Other Remarks
There are no Other Remarks.

FOR COMMISSION USE ONLY	
Status: Accepted	1143861

RECEIVED

Form 1002A
Rev. 2009

OCT 17 2019

OKLAHOMA CORPORATION
COMMISSION

API NO. 047 25201
OTC PROD.
UNIT NO.

(PLEASE TYPE OR USE BLACK INK ONLY)

OKLAHOMA CORPORATION COMMISSION
Oil & Gas Conservation Division
Post Office Box 52000
Oklahoma City, Oklahoma 73152-2000
Rule 165:10-3-25

☒ ORIGINAL
☐ AMENDED (Reason) _____

COMPLETION REPORT

TYPE OF DRILLING OPERATION
☒ STRAIGHT HOLE ☐ DIRECTIONAL HOLE ☐ HORIZONTAL HOLE
☐ SERVICE WELL

If directional or horizontal, see reverse for bottom hole location.

COUNTY **Garfield** SEC **1** TWP **22N** RGE **03W**
LEASE NAME **Janis** WELL NO. **1**
DATE OF WELL COMPLETION **10-8-19** 1st PROD DATE **D & A**
RECOMP DATE _____
ELEVATION Derrick FL **1117'** Ground **1105'** FSL OF 1/4 SEC **990'** ELEV OF 1/4 SEC **1650'**
Latitude (if known) _____ Longitude (if known) _____
OPERATOR NAME **NEON Gas, LLC** OTC / OCC OPERATOR NO. **24394 0**
ADDRESS **14551 S. Midwest Blvd.**
CITY **Edmond** STATE **OK** ZIP **73034**

640 Acres

LOCATE WELL

COMPLETION TYPE

☐ SINGLE ZONE
☐ MULTIPLE ZONE
Application Date _____
☐ COMMINGLED
Application Date _____
LOCATION EXCEPTION ORDER NO. _____
INCREASED DENSITY ORDER NO. _____

CASING & CEMENT (Attach Form 1002C)

TYPE	SIZE	WEIGHT	GRADE	FEET	PSI	SAX	TOP OF CMT
CONDUCTOR							
SURFACE	85/8	24	J55	253		175	Surface
INTERMEDIATE							
PRODUCTION							
LINER							
TOTAL DEPTH							2,350

PACKER @ _____ BRAND & TYPE _____ PLUG @ _____ TYPE _____ PLUG @ _____ TYPE _____
PACKER @ _____ BRAND & TYPE _____ PLUG @ _____ TYPE _____ PLUG @ _____ TYPE _____

COMPLETION & TEST DATA BY PRODUCING FORMATION

FORMATION							
SPACING & SPACING							
ORDER NUMBER							
CLASS: Oil, Gas, Dry, Inj, Disp, Comm Disp, Svc							
PERFORATED INTERVALS							
ACID/VOLUME							
FRACTURE TREATMENT (Fluids/Prop Amounts)							

☐ Min Gas Allowable (165:10-17-7)
OR
☐ Oil Allowable (165:10-13-3)

Gas Purchaser/Measurer
First Sales Date _____

INITIAL TEST DATA

INITIAL TEST DATE						
OIL-BBL/DAY						
OIL-GRAVITY (API)						
GAS-MCF/DAY						
GAS-OIL RATIO CU FT/BBL						
WATER-BBL/DAY						
PUMPING OR FLOWING						
INITIAL SHUT-IN PRESSURE						
CHOKE SIZE						
FLOW TUBING PRESSURE						

AS SUBMITTED

A record of the formations drilled through, and pertinent remarks are presented on the reverse. I declare that I have knowledge of the contents of this report and am authorized by my organization to make this report, which was prepared by me or under my supervision and direction, with the data and facts stated herein to be true, correct, and complete to the best of my knowledge and belief.

SIGNATURE **William D Sutton** DATE **10/14/2019** PHONE NUMBER **405 590-7303**
ADDRESS **14551 S Midwesy Blvd** CITY **Edmond** STATE **OK** ZIP **73034** EMAIL ADDRESS **billsuttonpetgeo@gmail.com**

PLEASE TYPE OR USE BLACK INK ONLY

FORMATION RECORD

Give formation names and tops, if available, or descriptions and thickness of formations drilled through. Show intervals cored or drillstem tested.

LEASE NAME Janis WELL NO. 1

NAMES OF FORMATIONS	TOP
Herrington	930
Burlingame	2,260

FOR COMMISSION USE ONLY

ITD on file ☐ YES ☐ NO

APPROVED _____ DISAPPROVED _____

2) Reject Codes

Were open hole logs run? ☒ yes ☐ no

Date Last log was run 10/8/2019

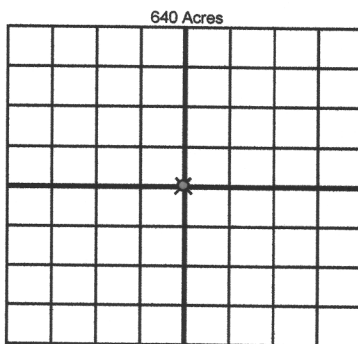
Was CO₂ encountered? ☐ yes ☒ no at what depths? _____

Was H₂S encountered? ☐ yes ☒ no at what depths? _____

Were unusual drilling circumstances encountered? ☐ yes ☒ no

If yes, briefly explain below

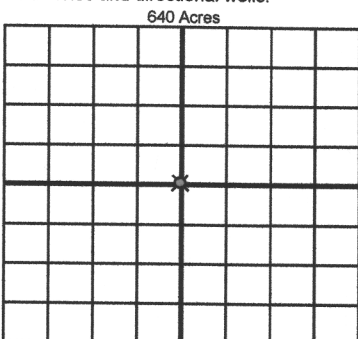
Other remarks:



If more than three drainholes are proposed, attach a separate sheet indicating the necessary information.

Direction must be stated in degrees azimuth. Please note, the horizontal drainhole and its end point must be located within the boundaries of the lease or spacing unit.

Directional surveys are required for all drainholes and directional wells.



BOTTOM HOLE LOCATION FOR DIRECTIONAL HOLE

SEC	TWP	RGE	COUNTY
Spot Location		Feet From 1/4 Sec Lines	FSL
1/4	1/4	1/4	1/4
Measured Total Depth	True Vertical Depth	BHL From Lease, Unit, or Property Line:	

BOTTOM HOLE LOCATION FOR HORIZONTAL HOLE: (LATERALS)

LATERAL #1

SEC	TWP	RGE	COUNTY
Spot Location		Feet From 1/4 Sec Lines	FSL
1/4	1/4	1/4	1/4
Depth of Deviation	Radius of Turn	Direction	Total Length
Measured Total Depth	True Vertical Depth	BHL From Lease, Unit, or Property Line:	

LATERAL #2

SEC	TWP	RGE	COUNTY
Spot Location		Feet From 1/4 Sec Lines	FSL
1/4	1/4	1/4	1/4
Depth of Deviation	Radius of Turn	Direction	Total Length
Measured Total Depth	True Vertical Depth	BHL From Lease, Unit, or Property Line:	

LATERAL #3

SEC	TWP	RGE	COUNTY
Spot Location		Feet From 1/4 Sec Lines	FSL
1/4	1/4	1/4	1/4
Depth of Deviation	Radius of Turn	Direction	Total Length
Measured Total Depth	True Vertical Depth	BHL From Lease, Unit, or Property Line:	