

Oklahoma Corporation Commission
Oil & Gas Conservation Division
Post Office Box 52000
Oklahoma City, Oklahoma 73152-2000
Rule 165: 10-3-25

Form 1002A

API No.: 35051246660001

Completion Report

Spud Date: July 12, 2019

OTC Prod. Unit No.: 051-226033-0-0000

Drilling Finished Date: July 27, 2019

1st Prod Date: September 06, 2019

Completion Date: September 06, 2019

Drill Type: HORIZONTAL HOLE

Min Gas Allowable: Yes

Well Name: LIVINGSTON 0112 5H

Purchaser/Measurer: DCP MIDSTREAM

Location: GRADY 12 9N 5W
SE SE SW SE
291 FSL 1327 FEL of 1/4 SEC
Latitude: 35.262668332 Longitude: -97.674961161
Derrick Elevation: 0 Ground Elevation: 1344

First Sales Date: 09/06/2019

Operator: EOG RESOURCES INC 16231

3817 NW EXPRESSWAY STE 500
OKLAHOMA CITY, OK 73112-1483

Completion Type		Location Exception		Increased Density	
X	Single Zone	Order No		Order No	
	Multiple Zone	700714		699153	
	Commingled				

Casing and Cement							
Type	Size	Weight	Grade	Feet	PSI	SAX	Top of CMT
SURFACE	9 5/8	36	J-55	962		480	SURFACE
PRODUCTION	5 1/2	20	P-110	19911		2415	7912

Liner								
Type	Size	Weight	Grade	Length	PSI	SAX	Top Depth	Bottom Depth
There are no Liner records to display.								

Total Depth: 19922

Packer	
Depth	Brand & Type
There are no Packer records to display.	

Plug	
Depth	Plug Type
There are no Plug records to display.	

Initial Test Data

Test Date	Formation	Oil BBL/Day	Oil-Gravity (API)	Gas MCF/Day	Gas-Oil Ratio Cu FT/BBL	Water BBL/Day	Pumpin or Flowing	Initial Shut-In Pressure	Choke Size	Flow Tubing Pressure
Sep 08, 2019	WOODFORD	1466	40	1469	1002	6558	FLOWING	2000	100	705

Completion and Test Data by Producing Formation										
Formation Name: WOODFORD				Code: 319WDFD				Class: OIL		
Spacing Orders				Perforated Intervals						
Order No		Unit Size		From			To			
698051		1280		9685			19814			
Acid Volumes				Fracture Treatments						
1,250 GALLONS 7.5% HCL TOTAL ACID				18,367,684 GALLONS TOTAL FLUID, 25,356,500 POUNDS TOTAL PROPPANT						

Formation	Top
WOODFORD	9553

Were open hole logs run? No
Date last log run:

Were unusual drilling circumstances encountered? No
Explanation:

Other Remarks
EXCEPTION TO OAC 165:10-3-28 - INTERIM ORDER NUMBER 701596. OCC - THIS DOCUMENT IS ACCEPTED BASED ON THE DATA SUBMITTED THE FINAL LOCATION EXCEPTION HAS NOT BEEN SUBMITTED.

Lateral Holes
Sec: 1 TWP: 9N RGE: 5W County: GRADY NW NE NW NE 177 FNL 1880 FEL of 1/4 SEC Depth of Deviation: 9030 Radius of Turn: 763 Direction: 360 Total Length: 10129 Measured Total Depth: 19922 True Vertical Depth: 9156 End Pt. Location From Release, Unit or Property Line: 177

FOR COMMISSION USE ONLY
<div>Status: Accepted</div> <div>1143892</div>

FORMATION RECORD

LEASE NAME

LIVINGSTON 0112

WELL NO. 5H

NAMES OF FORMATIONS	TOP
WOODFORD	MD 9,553

FOR COMMISSION USE ONLY	
ITD on file	<input type="checkbox"/> YES <input type="checkbox"/> NO
APPROVED	DISAPPROVED
<div style="border-bottom: 1px solid black; margin-bottom: 10px;"></div>	2) Reject Codes <div style="border-bottom: 1px solid black; margin-bottom: 5px;"></div> <div style="border-bottom: 1px solid black; margin-bottom: 5px;"></div> <div style="border-bottom: 1px solid black; margin-bottom: 5px;"></div> <div style="border-bottom: 1px solid black; margin-bottom: 5px;"></div>

[illegible]

Other remarks:

EXCEPTION TO OAC 165:10-3-28 - Interim Order #701596

640 Acres

1

2

3

4

Direction must be stated in degrees azimuth.
Please note, the horizontal drainhole and its end point must be located within the boundaries of the lease or spacing unit.

Directional surveys are required for all drainholes and directional wells.

640 Acres

A 10x10 grid representing 640 acres. A thick vertical line separates the first column from the remaining nine columns. The first column contains 10 small squares, and the remaining nine columns each contain 10 small squares, for a total of 100 small squares.

BOTTOM HOLE LOCATION FOR DIRECTIONAL HOLE

SEC	TWP	RGE	COUNTY			
Spot Location				Feet From 1/4 Sec Lines	FSL	FWL
1/4		1/4	1/4	1/4		
Measured Total Depth		True Vertical Depth		BHL From Lease, Unit, or Property Line:		

BOTTOM HOLE LOCATION FOR HORIZONTAL HOLE: (LATERALS)

LATERAL #1

SEC 1	TWP 9N	RGE 5W	COUNTY GRADY		
Spot Location					
NW 1/4	NE 1/4	NW 1/4	NE 1/4	Feet From 1/4 Sec Lines	FNL 177 FEL 1,880
Depth of Deviation 9,030		Radius of Turn 763		Direction 360	Total Length 10,129
Measured Total Depth 19,922		True Vertical Depth 9,156		BHL From Lease, Unit, or Property Line: 177	

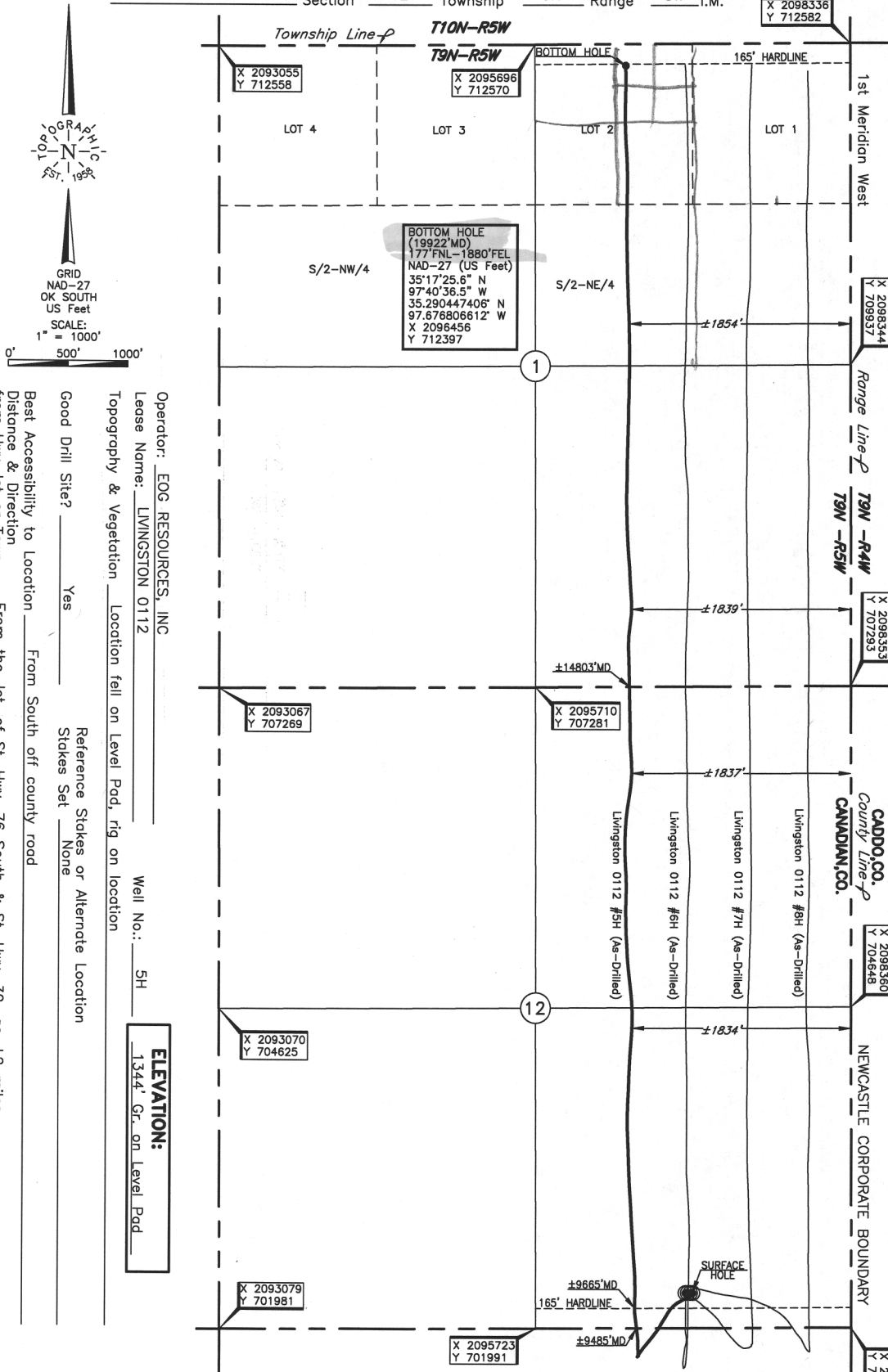
LATERAL #2

SEC	TWP	RGE	COUNTY			
Spot Location						
1/4	1/4	1/4	1/4	Feet From 1/4 Sec Lines	FSL	FWL
Depth of Deviation		Radius of Turn		Direction	Total Length	
Measured Total Depth		True Vertical Depth		BHL From Lease, Unit, or Property Line:		

LATERAL #3

SEC	TWP	RGE	COUNTY			
Spot Location						
1/4	1/4	1/4	1/4	Feet From 1/4 Sec Lines	FSL	FWL
Depth of Deviation		Radius of Turn		Direction	Total Length	
Measured Total Depth		True Vertical Depth		BHL From Lease, Unit, or Property Line:		

291' FSL-1327' FEL Section 12 Township 9N Range 5W I.M.



BHL
 NW NE NW NE

Operator: EOG RESOURCES, INC
 Lease Name: LIVINGSTON 0112
 Topography & Vegetation: Location fall on Level Pad, rig on location
 Good Drill Site? Yes
 Reference Stakes or Alternate Location: Stakes Set None
 Best Accessibility to Location: From South off county road
 Distance & Direction: From the Jct. of St. Hwy. 76 South & St. Hwy. 39, go ±2 miles South on St. Hwy. 76, then ±1 mile West to the SE Cor. of Sec. 12-T9N-R5W

Well No.: 5H
 ELEVATION: 1344' Gr. on Level Pad

DATUM: NAD-27
 LAT: 35°15'45.6" N
 LONG: 97°40'29.9" W
 LAT: 35.262668332° N
 LONG: 97.674961161° W
 STATE PLANE
 COORDINATES: (US Feet)
 ZONE: OK SOUTH
 X: 2097040
 Y: 702287

Project # 124196C Date of Drawing: July 24, 2019
 Date Staked: July 8, 2019 AL

FINAL AS-DRILLED PLAT

AS-DRILLED INFORMATION
 FURNISHED BY EOG RESOURCES

This information was gathered with a GPS receiver with 1" foot horiz./vert. accuracy