

Oklahoma Corporation Commission
Oil & Gas Conservation Division
Post Office Box 52000
Oklahoma City, Oklahoma 73152-2000
Rule 165: 10-3-25

Form 1002A

API No.: 35051246910000

Completion Report

Spud Date: August 21, 2019

OTC Prod. Unit No.: 051-226572-0-0000

Drilling Finished Date: October 07, 2019

1st Prod Date: February 10, 2020

Completion Date: February 10, 2020

Drill Type: HORIZONTAL HOLE

Min Gas Allowable: Yes

Well Name: LIVINGSTON 0112 4H

Purchaser/Measurer: ENABLE GATHERING & PROCESSING

Location: GRADY 12 9N 5W
NE SW SE SW
339 FSL 1780 FWL of 1/4 SEC
Latitude: 35.262796888 Longitude: -97.682269912
Derrick Elevation: 0 Ground Elevation: 1304

First Sales Date: 02/10/2020

Operator: EOG RESOURCES INC 16231

14701 HERTZ QUAIL SPRINGS PKWY
OKLAHOMA CITY, OK 73134-2646

Completion Type	
X	Single Zone
	Multiple Zone
	Commingled

Location Exception	
Order No	
701169	

Increased Density	
Order No	
699153	

Casing and Cement							
Type	Size	Weight	Grade	Feet	PSI	SAX	Top of CMT
SURFACE	9 5/8	36	J-55	981		420	SURFACE
PRODUCTION	5 1/2	20	P-110	19901		2073	4939

Liner								
Type	Size	Weight	Grade	Length	PSI	SAX	Top Depth	Bottom Depth
There are no Liner records to display.								

Total Depth: 19907

Packer	
Depth	Brand & Type
There are no Packer records to display.	

Plug	
Depth	Plug Type
There are no Plug records to display.	

Initial Test Data

Test Date	Formation	Oil BBL/Day	Oil-Gravity (API)	Gas MCF/Day	Gas-Oil Ratio Cu FT/BBL	Water BBL/Day	Pumpin or Flowing	Initial Shut-In Pressure	Choke Size	Flow Tubing Pressure
Feb 10, 2020	WOODFORD	680	40	747	1099	1978	FLOWING	910	128/128	886

Completion and Test Data by Producing Formation

Formation Name: WOODFORD

Code: 319WDFD

Class: OIL

Spacing Orders

Order No	Unit Size
698051	1280

Perforated Intervals

From	To
9665	19804

Acid Volumes

2,000 GALLONS 7.5% HCL TOTAL ACID

Fracture Treatments

21,201,248 GALLONS TOTAL FLUID, 15,117,561 POUNDS TOTAL PROPPANT
--

Formation	Top
WOODFORD	9570

Were open hole logs run? No

Date last log run:

Were unusual drilling circumstances encountered? No

Explanation:

Other Remarks

EXCEPTION TO OAC 165:10-3-28 - FINAL ORDER OF THE COMMISSION NUMBER 706923. OCC - THIS DOCUMENT IS ACCEPTED BASED ON THE DATA SUBMITTED THE FINAL LOCATION EXCEPTION HAS NOT BEEN SUBMITTED.

Lateral Holes

Sec: 1 TWP: 9N RGE: 5W County: GRADY

NW NE NE NW

177 FNL 2238 FWL of 1/4 SEC

Depth of Deviation: 9027 Radius of Turn: 845 Direction: 8 Total Length: 10035

Measured Total Depth: 19907 True Vertical Depth: 9068 End Pt. Location From Release, Unit or Property Line: 177

FOR COMMISSION USE ONLY

1145049

Status: Accepted

API NO: 051-24691
 OTC PROD. UNIT NO: 051-226572

PLEASE TYPE OR USE BLACK INK ONLY
 NOTE:

Attach copy of original 1002A if recompletion or reentry.

OKLAHOMA CORPORATION COMMISSION
 Oil & Gas Conservation Division
 Post Office Box 52000
 Oklahoma City, Oklahoma 73152-2000
 Rule 165:10-3-25

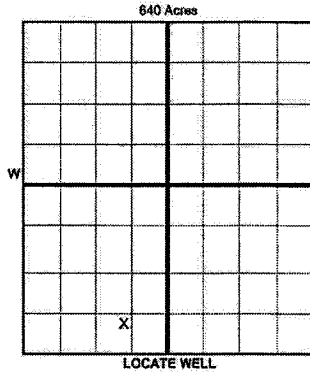
Form 1002A
 Rev. 2009

ORIGINAL
 AMENDED (Reason) _____

COMPLETION REPORT

TYPE OF DRILLING OPERATION
 STRAIGHT HOLE DIRECTIONAL HOLE HORIZONTAL HOLE
 SERVICE WELL

SPUD DATE 8/21/19
 DRLG FINISHED DATE 10/7/19
 DATE OF WELL COMPLETION 2/10/20
 1st PROD DATE 2/10/20
 RECOMP DATE



If directional or horizontal, see reverse for bottom hole location.
 COUNTY GRADY SEC 12 TWP 9N RGE 5W
 LEASE NAME LIVINGSTON 0112 WELL NO. 4H
 NE 1/4 SW 1/4 SE 1/4 SW 1/4 FSL 1/4 SEC 339 FWL 1/4 SEC 1,780
 ELEVATION N Derrick Ground 1,304
 FL Latitude (if known) 35.262796888 Longitude (if known) -97.682269912
 OPERATOR NAME EOG Resources, Inc. OTC/OCC OPERATOR NO. 16231
 ADDRESS 3817 NW Expressway, Suite 500
 CITY Oklahoma City STATE OK ZIP 73112

COMPLETION TYPE
 SINGLE ZONE
 MULTIPLE ZONE
 COMMINGLED
 LOCATION EXCEPTION ORDER 701169 *LD*
 INCREASED DENSITY ORDER NO. 699153

CASING & CEMENT (Form 1002C must be attached)								
TYPE	SIZE	WEIGHT	GRADE	FEET	PSI	SAX	TOP OF CMT	
CONDUCTOR								
SURFACE	9 5/8	36	J-55	981		420	SURFACE	
INTERMEDIATE								
PRODUCTION	5 1/2	20	P-110	19,901		2,073	4,939	
LINER								
							TOTAL DEPTH	19,907

PACKER @ _____ BRAND & TYPE _____ PLUG @ _____ TYPE _____ PLUG @ _____ TYPE _____
 PACKER @ _____ BRAND & TYPE _____ PLUG @ _____ TYPE _____ PLUG @ _____ TYPE _____

COMPLETION & TEST DATA BY PRODUCING FORMATION *319 WDFD*

FORMATION	WOODFORD						
SPACING & SPACING ORDER NUMBER	1280/698051						
CLASS: Oil, Gas, Dry, Inj, Disp, Comm Disp, Svc	OIL						
PERFORATED INTERVALS	9,665 - 19,804						
ACID/VOLUME	Total Acid - 2,000 GALS 7.5% HCL						
FRACTURE TREATMENT (Fluids/Prop Amounts)	Total Fluid - 21,201,248 GALS Total Prop - 15,117,561 LBS						

Monitor Report to Fact Focus

Min Gas Allowable (165:10-17-7) OR Gas Purchaser/Measurer First Sales Date
 Oil Allowable (165:10-13-3) ENABLE GATHERING & PROCESSING 2/10/2020

INITIAL TEST DATA

INITIAL TEST DATE	2/10/2020					
OIL-BBL/DAY	680					
OIL-GRAVITY (API)	40					
GAS-MCF/DAY	747					
GAS-OIL RATIO CU FT/BBL	1099					
WATER-BBL/DAY	1978					
PUMPING OR FLOWING	FLOWING					
INITIAL SHUT-IN PRESSURE	910					
CHOKE SIZE	128/128					
FLOW TUBING PRESSURE	886					

A record of the formations drilled through, and pertinent remarks are presented on the reverse. I declare that I have knowledge of the contents of this report and am authorized by my organization to make this report, which was prepared by me or under my supervision and direction, with the data and facts stated herein to be true, correct, and complete to the best of my knowledge and belief.

Cory Helms
 SIGNATURE NAME (PRINT OR TYPE) Cory Helms
 14701 Hertz Quail Springs Pkwy Oklahoma City OK 73134
 ADDRESS CITY STATE ZIP
 DATE 4/6/2020 PHONE NUMBER 405-246-3216
 EMAIL ADDRESS cory_helms@eogresources.com

PLEASE TYPE OR USE BLACK INK ONLY
FORMATION RECORD

Give formation names and tops, if available, or descriptions and thickness of formations drilled through. Show intervals cored or drillstem tested.

LEASE NAME

LIVINGSTON 0112

WELL NO.

4H

NAMES OF FORMATIONS		TOP
WOODFORD	MD	9,570

FOR COMMISSION USE ONLY

ITD on file YES NO

APPROVED _____ DISAPPROVED _____

2) Reject Codes

Were open hole logs run? yes no

Date Last log was run _____ N/A

Was CO₂ encountered? yes no at what depths? _____

Was H₂S encountered? yes no at what depths? _____

Were unusual drilling circumstances encountered? yes no
If yes, briefly explain below: _____

Other remarks:

EXCEPTION TO OAC 165:10-3-28 - Final Order of the Commission #706923

640 Acres

If more than three drainholes are proposed, attach a separate sheet indicating the necessary information.

Direction must be stated in degrees azimuth.
Please note, the horizontal drainhole and its end point must be located within the boundaries of the lease or spacing unit.

Directional surveys are required for all drainholes and directional wells.

640 Acres

BOTTOM HOLE LOCATION FOR DIRECTIONAL HOLE

SEC	TWP	RGE	COUNTY				
Spot Location	1/4	1/4	1/4	1/4	Feet From 1/4 Sec Lines	FSL	FWL
Measured Total Depth	True Vertical Depth		BHL From Lease, Unit, or Property Line:				

BOTTOM HOLE LOCATION FOR HORIZONTAL HOLE: (LATERALS)

LATERAL #1

SEC	TWP	RGE	COUNTY				
1	9N	5W	GRADY				
Spot Location	NW 1/4	NE 1/4	NE 1/4	NW 1/4	Feet From 1/4 Sec Lines	FNL 177	FWL 2,238
Depth of Deviation	9,027		Radius of Turn	845	Direction	8	Total Length 10,035
Measured Total Depth	19,907		True Vertical Depth	9,068		BHL From Lease, Unit, or Property Line: 177	

LATERAL #2

SEC	TWP	RGE	COUNTY				
Spot Location	1/4	1/4	1/4	1/4	Feet From 1/4 Sec Lines	FSL	FWL
Depth of Deviation	Radius of Turn		Direction		Total Length		
Measured Total Depth	True Vertical Depth		BHL From Lease, Unit, or Property Line:				

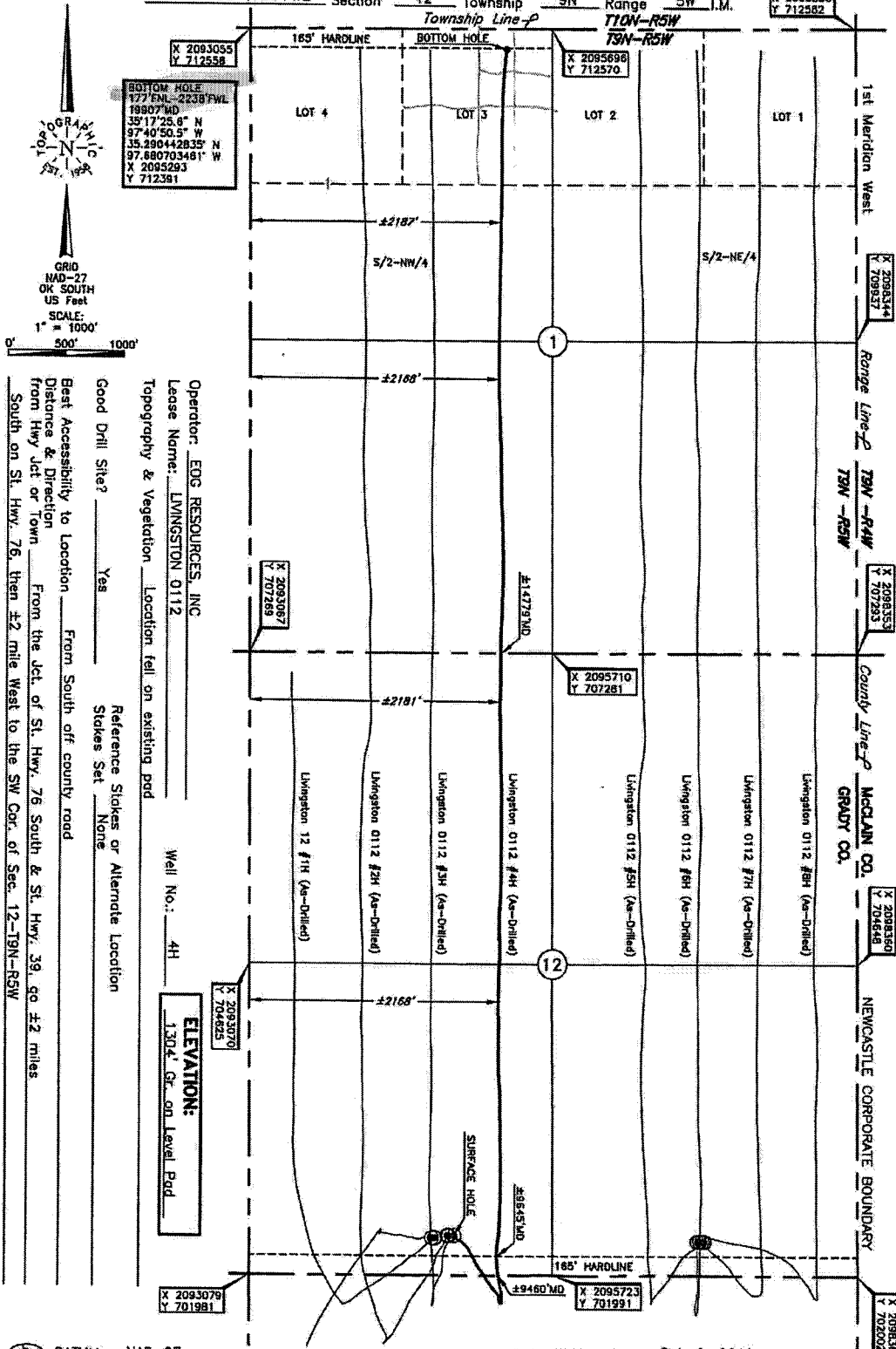
LATERAL #3

SEC	TWP	RGE	COUNTY				
Spot Location	1/4	1/4	1/4	1/4	Feet From 1/4 Sec Lines	FSL	FWL
Depth of Deviation	Radius of Turn		Direction		Total Length		
Measured Total Depth	True Vertical Depth		BHL From Lease, Unit, or Property Line:				

Image @ 1002A

TOPOGRAPHIC LAND SURVEYORS OF OKLAHOMA
 13800 Wireless Way, Okla. City, OK. 73134 • LOCAL (405) 843-4847 • OUT OF STATE (800) 654-3219
 Certificate of Authorization No. 1283 LS

County, Oklahoma
 339° FSL-1780° FWL Section 12 Township 9N Range 5W I.M.
 Township Line - P T10N-R5W
 T5N-R5W



BHL
 NW NE NE NW

Operator: **EOG RESOURCES, INC**
 Lease Name: **LIVINGSTON 0112**
 Topography & Vegetation: Location fell on existing pad
 Good Drill Site? Yes No
 Reference Stakes or Alternate Location:
 Stakes Set None
 East Accessibility to Location: From South off county road
 Distance & Direction from Hwy Jct or Town: From the Jct. of St. Hwy. 76 South & St. Hwy. 39, go ±2 miles South on St. Hwy. 76, then ±2 mile West to the SW Cor. of Sec. 12-T9N-R5W

Well No.: **4H**
ELEVATION:
1304' Gr. on Level Pad

DATUM: NAD-27
 LAT: 35°15'46.1" N
 LONG: 97°40'56.2" W
 LAT: 35.2627968888° N
 LONG: 97.682269912° W
 STATE PLANE COORDINATES: (US Feet)
 ZONE: OK SOUTH
 X: 2094857
 Y: 702327

Date of Drawing: Oct. 9, 2019
 Project # 124196 Date Staked: Aug. 12, 2019 TR

FINAL AS-DRILLED PLAT

AS-DRILLED INFORMATION
 FURNISHED BY EOG RESOURCES