

Oklahoma Corporation Commission  
 Oil & Gas Conservation Division  
 Post Office Box 52000  
 Oklahoma City, Oklahoma 73152-2000  
 Rule 165: 10-3-25

Form 1002A

API No.: 35087222620001

**Completion Report**

Spud Date: October 26, 2019

OTC Prod. Unit No.: 087-226674-0-0000

Drilling Finished Date: December 20, 2019

1st Prod Date: March 07, 2020

Completion Date: March 07, 2020

**Drill Type: HORIZONTAL HOLE**

Min Gas Allowable: Yes

Well Name: NIGHTHAWK 0718 6H

Purchaser/Measurer: ENABLE GATHERING & PROCESSING

Location: MCCLAIN 7 9N 4W  
 SW SE NE NW  
 1053 FNL 2044 FWL of 1/4 SEC  
 Latitude: 35.273503532 Longitude: -97.663665352  
 Derrick Elevation: 0 Ground Elevation: 1354

First Sales Date: 03/07/2020

Operator: EOG RESOURCES INC 16231

14701 HERTZ QUAIL SPRINGS PKWY  
 OKLAHOMA CITY, OK 73134-2646

Completion Type	
X	Single Zone
	Multiple Zone
	Commingled

Location Exception	
Order No	
701697	

Increased Density	
Order No	
700718	
700719	

Casing and Cement							
Type	Size	Weight	Grade	Feet	PSI	SAX	Top of CMT
SURFACE	9 5/8	36	J-55	1208		480	SURFACE
PRODUCTION	5 1/2	20	P-110	19755		2195	999

Liner								
Type	Size	Weight	Grade	Length	PSI	SAX	Top Depth	Bottom Depth
There are no Liner records to display.								

**Total Depth: 19766**

Packer	
Depth	Brand & Type
There are no Packer records to display.	

Plug	
Depth	Plug Type
There are no Plug records to display.	

Initial Test Data

Test Date	Formation	Oil BBL/Day	Oil-Gravity (API)	Gas MCF/Day	Gas-Oil Ratio Cu FT/BBL	Water BBL/Day	Pumpin or Flowing	Initial Shut-In Pressure	Choke Size	Flow Tubing Pressure
Mar 09, 2020	WOODFORD	242	40	251	1037	9151	FLOWING	1800	128	350

**Completion and Test Data by Producing Formation**

Formation Name: WOODFORD

Code: 319WDFD

Class: OIL

**Spacing Orders**

Order No	Unit Size
632844	640
682713	640
702414	MULTIUNIT

**Perforated Intervals**

From	To
9824	14927
14941	19660

**Acid Volumes**

1,000 GALLONS 7.5% HCL TOTAL ACID
-----------------------------------

**Fracture Treatments**

21,203,162 GALLONS TOTAL FLUID, 29,564,473 POUNDS TOTAL PROPPANT
--

Formation	Top
WOODFORD	9526

Were open hole logs run? No

Date last log run:

Were unusual drilling circumstances encountered? No

Explanation:

**Other Remarks**

OCC - THIS DOCUMENT IS ACCEPTED BASED ON THE DATA SUBMITTED NEITHER THE FINAL LOCATION EXCEPTION NOR THE FINAL MULTIUNIT ORDERS HAVE BEEN ISSUED.

**Lateral Holes**

Sec: 18 TWP: 9N RGE: 4W County: MCCLAIN

NE SW SW SE

466 FSL 2166 FEL of 1/4 SEC

Depth of Deviation: 9105 Radius of Turn: 1057 Direction: 180 Total Length: 9604

Measured Total Depth: 19766 True Vertical Depth: 9365 End Pt. Location From Release, Unit or Property Line: 466

**FOR COMMISSION USE ONLY**

1145224

Status: Accepted

RECEIVED

Form 1002A Rev. 2009

MAR 20 2020

OKLAHOMA CORPORATION COMMISSION

API NO. 087-22262X  
OTC PROD. UNIT NO. 087-226674

PLEASE TYPE OR USE BLACK INK ONLY  
NOTE:

Attach copy of original 1002A if recompletion or reentry.

OKLAHOMA CORPORATION COMMISSION  
Oil & Gas Conservation Division  
Post Office Box 52000  
Oklahoma City, Oklahoma 73152-2000  
Rule 165:10-3-25

ORIGINAL  
 AMENDED (Reason)

COMPLETION REPORT

TYPE OF DRILLING OPERATION

STRAIGHT HOLE  DIRECTIONAL HOLE  HORIZONTAL HOLE  
 SERVICE WELL

SPUD DATE 10/26/2019

DRLG FINISHED DATE 12/20/19

If directional or horizontal, see reverse for bottom hole location.

COUNTY McClain SEC 7 TWP 9N RGE 4W DATE OF WELL COMPLETION 3/7/20

LEASE NAME NIGHTHAWK 0718 WELL NO. 6H 1st PROD DATE 3/7/20

SW 1/4 SE 1/4 NE 1/4 NW 1/4 **FNL** 1,053 1/4 SEC 2,044 RECOMP DATE

ELEVATION N Derrick Ground 1,354 Latitude (if known) 35.273503572 Longitude (if known) -97.663665352

OPERATOR NAME EOG Resources, Inc. OTC/OCC OPERATOR NO. 16231

ADDRESS 3817 NW Expressway, Suite 500

CITY Oklahoma City STATE OK ZIP 73112

Grid for well location with 'X' in the center and 'W' on the left, 'E' on the right.

LOCATE WELL

COMPLETION TYPE

SINGLE ZONE  
 MULTIPLE ZONE  
Application Date  
 COMMINGLED  
Application Date  
LOCATION EXCEPTION ORDER 701697 IO,  
INCREASED DENSITY ORDER NO. 700718, 700719

CASING & CEMENT (Form 1002C must be attached)

Table with columns: TYPE, SIZE, WEIGHT, GRADE, FEET, PSI, SAX, TOP OF CMT. Rows include CONDUCTOR, SURFACE, INTERMEDIATE, PRODUCTION, LINER.

PACKER @ BRAND & TYPE PLUG @ TYPE PLUG @ TYPE  
PACKER @ BRAND & TYPE PLUG @ TYPE PLUG @ TYPE

TOTAL DEPTH 19,766

COMPLETION & TEST DATA BY PRODUCING FORMATION 319 WDFD

Table with columns: FORMATION, SPACING & SPACING ORDER NUMBER, CLASS, PERFORATED INTERVALS, ACID/VOLUME, FRACTURE TREATMENT. Includes handwritten notes like 'WOODFORD', '640/632844,682713 - MU/702414 IO', and 'Monitor Report to Face Focus'.

Min Gas Allowable (165:10-17-7)

Gas Purchaser/Measurer

Enable Gathering & Processing

OR

Oil Allowable (165:10-13-3)

First Sales Date

3/7/2020

INITIAL TEST DATA

Table with columns: INITIAL TEST DATE, OIL-BBL/DAY, OIL-GRAVITY (API), GAS-MCF/DAY, GAS-OIL RATIO CU FT/BBL, WATER-BBL/DAY, PUMPING OR FLOWING, INITIAL SHUT-IN PRESSURE, CHOKE SIZE, FLOW TUBING PRESSURE.

A record of the formations drilled through, and pertinent remarks are presented on the reverse. I declare that I have knowledge of the contents of this report and am authorized by my organization to make this report, which was prepared by me or under my supervision and direction, with the data and facts stated herein to be true, correct, and complete to the best of my knowledge and belief.

Signature: Joni Reeder  
NAME (PRINT OR TYPE): Joni Reeder  
DATE: 3/19/20  
PHONE NUMBER: 405-246-3100  
ADDRESS: 3817 NW Expressway, Suite 500  
CITY: Oklahoma City STATE: OK ZIP: 73112  
EMAIL ADDRESS: joni\_reeder@eogresources.com

PLEASE TYPE OR USE BLACK INK ONLY  
FORMATION RECORD

Give formation names and tops, if available, or descriptions and thickness of formations drilled through. Show intervals cored or drillstem tested.

LEASE NAME

NIGHTHAWK 0718

WELL NO.

6H

NAMES OF FORMATIONS		TOP
WOODFORD	MD	9,526

FOR COMMISSION USE ONLY

ITD on file  YES  NO

APPROVED \_\_\_\_\_ DISAPPROVED \_\_\_\_\_

2) Reject Codes

\_\_\_\_\_

\_\_\_\_\_

\_\_\_\_\_

\_\_\_\_\_

Were open hole logs run?  yes  no

Date Last log was run \_\_\_\_\_ N/A

Was CO<sub>2</sub> encountered?  yes  no at what depths? \_\_\_\_\_

Was H<sub>2</sub>S encountered?  yes  no at what depths? \_\_\_\_\_

Were unusual drilling circumstances encountered?  yes  no

If yes, briefly explain below:

Other remarks:

\_\_\_\_\_

\_\_\_\_\_

\_\_\_\_\_

\_\_\_\_\_

640 Acres


BOTTOM HOLE LOCATION FOR DIRECTIONAL HOLE

SEC	TWP	RGE	COUNTY		
Spot Location					
1/4	1/4	1/4	1/4	Feet From 1/4 Sec Lines	FSL FWL
Measured Total Depth		True Vertical Depth		BHL From Lease, Unit, or Property Line:	

BOTTOM HOLE LOCATION FOR HORIZONTAL HOLE: (LATERALS)

LATERAL #1 *Per LE exhibit*

SEC	TWP	RGE	COUNTY		
18	9N	4W	McClain		
Spot Location					
NE 1/4	SW 1/4	SE 1/4	SW 1/4	Feet From 1/4 Sec Lines	FSL FEL
Depth of Deviation		Radius of Turn		Direction	Total Length
9,105		1,057		180	9,604
Measured Total Depth		True Vertical Depth		BHL From Lease, Unit, or Property Line:	
19,766		9,365		<i>466 463 2166 2197</i>	

If more than three drainholes are proposed, attach a separate sheet indicating the necessary information.

Direction must be stated in degrees azimuth. Please note, the horizontal drainhole and its end point must be located within the boundaries of the lease or spacing unit.

Directional surveys are required for all drainholes and directional wells.

640 Acres


LATERAL #2

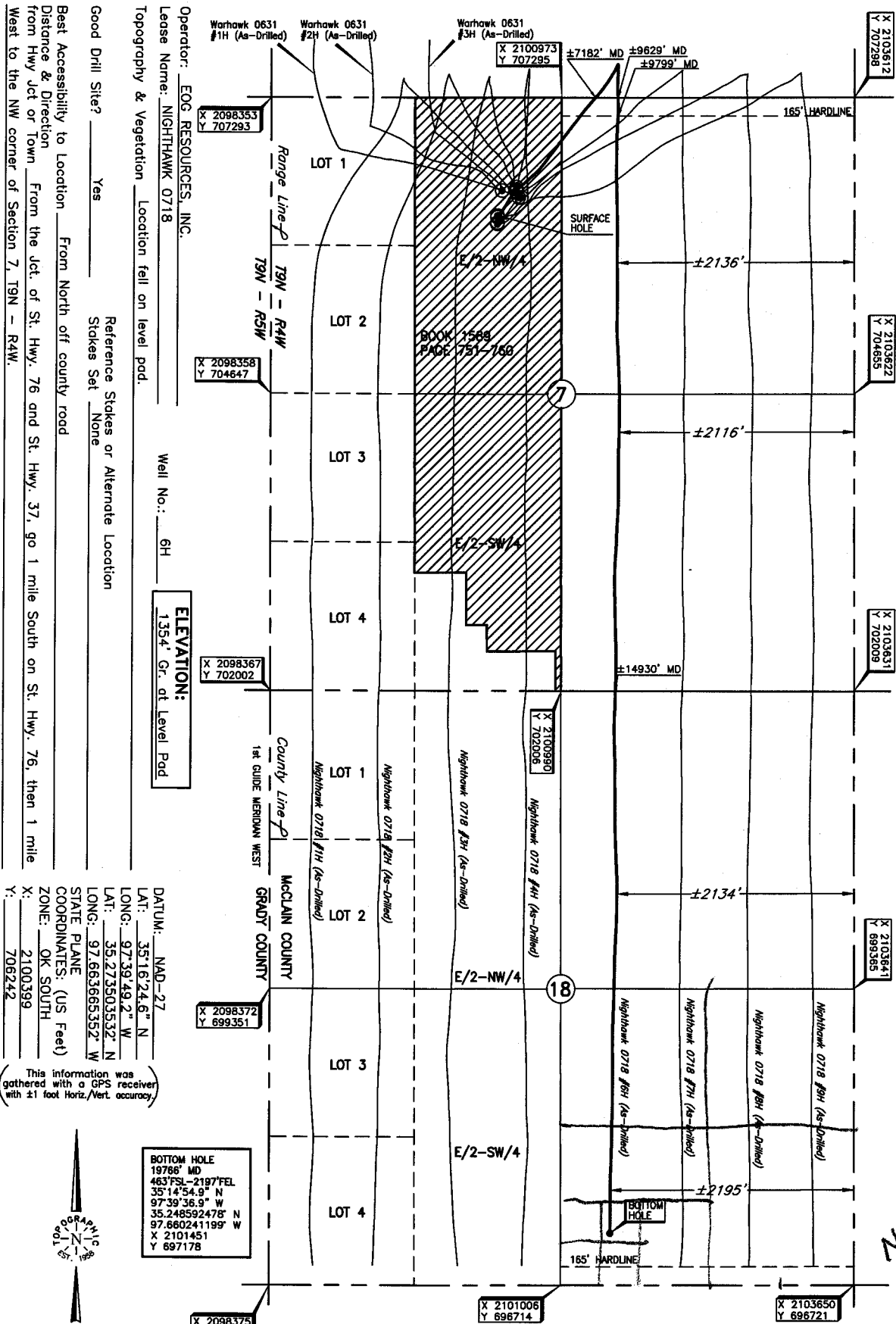
SEC	TWP	RGE	COUNTY		
Spot Location					
1/4	1/4	1/4	1/4	Feet From 1/4 Sec Lines	FSL FWL
Depth of Deviation		Radius of Turn		Direction	Total Length
Measured Total Depth		True Vertical Depth		BHL From Lease, Unit, or Property Line:	

LATERAL #3

SEC	TWP	RGE	COUNTY		
Spot Location					
1/4	1/4	1/4	1/4	Feet From 1/4 Sec Lines	FSL FWL
Depth of Deviation		Radius of Turn		Direction	Total Length
Measured Total Depth		True Vertical Depth		BHL From Lease, Unit, or Property Line:	

Image @ 100ZA

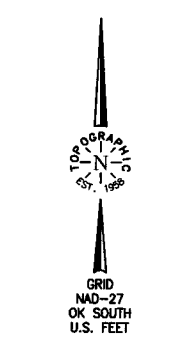
McCLAIN County, Oklahoma  
 1053' FNL - 2044' FWL Section 7 Township 9N Range 4W I.M.



Operator: EOG RESOURCES, INC.  
 Lease Name: NIGHTHAWK 0718  
 Topography & Vegetation: Location fell on level pod.  
 Well No.: 6H  
 ELEVATION: 1354' Gr. at Level Pod  
 Reference Stakes or Alternate Location: Sticks Set None  
 Good Drill Site? Yes  
 Best Accessibility to Location: From North off county road  
 Distance & Direction: From the Jct. of St. Hwy. 76 and St. Hwy. 37, go 1 mile South on St. Hwy. 76, then 1 mile West to the NW corner of Section 7, T9N - R4W.

DATUM: NAD-27  
 LAT: 35°16'24.6" N  
 LONG: 97°39'49.2" W  
 LAT: 35°27'30.5532" N  
 LONG: 97°36'33.552" W  
 STATE PLANE  
 COORDINATES: (US Feet)  
 ZONE: OK SOUTH  
 X: 2100399  
 Y: 706242

This information was gathered with a GPS receiver with ±1 foot Horiz/Vert accuracy



BOTTOM HOLE  
 19786' MD  
 463731-21977'FEL  
 35°14'54.9" N  
 97°39'36.9" W  
 35.248592478' N  
 97.660241199' W  
 X 2101451  
 Y 697178

X 2098375  
 Y 696707

Date of Drawing: Dec. 19, 2019  
 Project # 124508 Date Staked: Aug. 07, 2019 LC

FINAL AS-DRILLED PLAT

AS-DRILLED INFORMATION  
 FURNISHED BY EOG RESOURCES