

Oklahoma Corporation Commission
 Oil & Gas Conservation Division
 Post Office Box 52000
 Oklahoma City, Oklahoma 73152-2000
 Rule 165: 10-3-25

Form 1002A

API No.: 35087222630001

Completion Report

Spud Date: October 26, 2019

OTC Prod. Unit No.: 087-226675-0-0000

Drilling Finished Date: December 07, 2019

1st Prod Date: March 07, 2020

Completion Date: March 07, 2020

Drill Type: HORIZONTAL HOLE

Min Gas Allowable: Yes

Well Name: NIGHTHAWK 0718 7H

Purchaser/Measurer: ENABLE GATHERING & PROCESSING

Location: MCCLAIN 7 9N 4W
 SW SE NE NW
 1068 FNL 2044 FWL of 1/4 SEC
 Latitude: 35.273462363 Longitude: -97.663665285
 Derrick Elevation: 0 Ground Elevation: 1353

First Sales Date: 03/07/2020

Operator: EOG RESOURCES INC 16231

14701 HERTZ QUAIL SPRINGS PKWY
 OKLAHOMA CITY, OK 73134-2646

Completion Type	
X	Single Zone
	Multiple Zone
	Commingled

Location Exception	
Order No	
701698	

Increased Density	
Order No	
700718	
700719	

Casing and Cement							
Type	Size	Weight	Grade	Feet	PSI	SAX	Top of CMT
SURFACE	9 5/8	36	J-55	1207		480	SURFACE
PRODUCTION	5 1/2	20	P-110	20149		1965	1413

Liner								
Type	Size	Weight	Grade	Length	PSI	SAX	Top Depth	Bottom Depth
There are no Liner records to display.								

Total Depth: 20157

Packer	
Depth	Brand & Type
There are no Packer records to display.	

Plug	
Depth	Plug Type
There are no Plug records to display.	

Initial Test Data

Test Date	Formation	Oil BBL/Day	Oil-Gravity (API)	Gas MCF/Day	Gas-Oil Ratio Cu FT/BBL	Water BBL/Day	Pumpin or Flowing	Initial Shut-In Pressure	Choke Size	Flow Tubing Pressure
Mar 09, 2020	WOODFORD	298	40	432	1450	9858	FLOWING	1650	58	690

Completion and Test Data by Producing Formation

Formation Name: WOODFORD

Code: 319WDFD

Class: OIL

Spacing Orders

Order No	Unit Size
632844	640
682713	640
703576	MULTIUNIT

Perforated Intervals

From	To
9928	15028
15042	20052

Acid Volumes

1,260 GALLONS 7.5% HCL TOTAL ACID

Fracture Treatments

22,997,352 GALLONS TOTAL FLUID, 30,536,404 POUNDS TOTAL PROPPANT
--

Formation	Top
WOODFORD MD	9621
WOODFORD TVD	9054

Were open hole logs run? No

Date last log run:

Were unusual drilling circumstances encountered? No

Explanation:

Other Remarks

OCC - THIS DOCUMENT IS ACCEPTED BASED ON THE DATA SUBMITTED NEITHER THE FINAL LOCATION EXCEPTION NOR THE FINAL MULTIUNIT ORDERS HAVE BEEN ISSUED.

Lateral Holes

Sec: 18 TWP: 9N RGE: 4W County: MCCLAIN

SE SE SW SE

176 FSL 1531 FEL of 1/4 SEC

Depth of Deviation: 9243 Radius of Turn: 672 Direction: 186 Total Length: 10242

Measured Total Depth: 20157 True Vertical Depth: 9335 End Pt. Location From Release, Unit or Property Line: 176

FOR COMMISSION USE ONLY

1145225

Status: Accepted

RECEIVED

Form 1002A Rev. 2009

MAR 20 2020

OKLAHOMA CORPORATION COMMISSION

API NO. 087-22263X
OTC PROD. UNIT NO. 087-226675

PLEASE TYPE OR USE BLACK INK ONLY NOTE:

Attach copy of original 1002A if recompletion or reentry.

OKLAHOMA CORPORATION COMMISSION
Oil & Gas Conservation Division
Post Office Box 52000
Oklahoma City, Oklahoma 73152-2000

Rule 165-10-3-25

COMPLETION REPORT

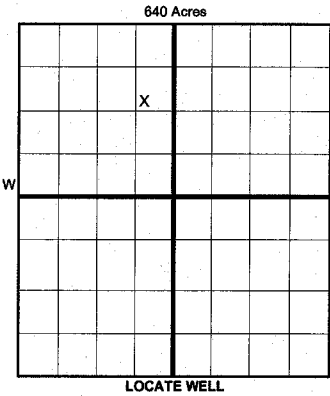
ORIGINAL
 AMENDED (Reason)

TYPE OF DRILLING OPERATION

STRAIGHT HOLE DIRECTIONAL HOLE HORIZONTAL HOLE
 SERVICE WELL

If directional or horizontal, see reverse for bottom hole location.

SPUD DATE 10/26/2019
DRLG FINISHED DATE 12/7/19
DATE OF WELL COMPLETION 3/7/20
1st PROD DATE 3/7/20
RECOMP DATE
COUNTY McClain SEC 7 TWP 9N RGE 4W
LEASE NAME NIGHTHAWK 0718 WELL NO. 7H
SW 1/4 SE 1/4 NE 1/4 NW 1/4 1/4 SEC 1,068 FWL OF 1/4 SEC 2,044
ELEVATIO N Derrick Ground 1,353 Latitude (if known) 35.27346236 Longitude (if known) -97.663665285
OPERATOR NAME EOG Resources, Inc. OTC/OCC OPERATOR NO. 16231
ADDRESS 3817 NW Expressway, Suite 500
CITY Oklahoma City STATE OK ZIP 73112



COMPLETION TYPE

SINGLE ZONE
 MULTIPLE ZONE
Application Date
 COMINGLED
Application Date
LOCATION EXCEPTION ORDER 701698 I.O.
INCREASED DENSITY ORDER NO. 700718, 700719

CASING & CEMENT (Form 1002C must be attached)

TYPE	SIZE	WEIGHT	GRADE	FEET	PSI	SAX	TOP OF CMT
CONDUCTOR							
SURFACE	9 - 5/8	36	J-55	1,207		480	SURFACE
INTERMEDIATE							
PRODUCTION	5 - 1/2	20	P-110	20,149		1,965	1,413
LINER							
TOTAL DEPTH							20,157

PACKER @ _____ BRAND & TYPE _____ PLUG @ _____ TYPE _____ PLUG @ _____ TYPE _____
PACKER @ _____ BRAND & TYPE _____ PLUG @ _____ TYPE _____ PLUG @ _____ TYPE _____

COMPLETION & TEST DATA BY PRODUCING FORMATION

WOODFORD 319 WDFD

FORMATION	WOODFORD						
SPACING & SPACING ORDER NUMBER	640/632844,682713 - MU /703576 I.O.						Monitor Report to Frac Focus
CLASS: Oil, Gas, Dry, Inj, Disp, Comm Disp, Svc	OIL						
PERFORATED INTERVALS	9928-15028 9928-20,062 15042-20052						
ACID/VOLUME	TOTAL ACID - 1,260 GALS 7.5% HCL						
FRACTURE TREATMENT (Fluids/Prop Amounts)	TOTAL FLUID - 22,997,352 GALS TOTAL PROP - 30,536,404 LBS						

Min Gas Allowable (165-10-17-7)

Gas Purchaser/Measurer

Enable Gathering & Processing

OR

Oil Allowable (165-10-13-3)

First Sales Date

3/7/2020

INITIAL TEST DATA

INITIAL TEST DATE	3/9/2020						
OIL-BBL/DAY	298						
OIL-GRAVITY (API)	40						
GAS-MCF/DAY	432						
GAS-OIL RATIO CU FT/BBL	1,450						
WATER-BBL/DAY	9,858						
PUMPING OR FLOWING	FLOWING						
INITIAL SHUT-IN PRESSURE	1,650						
CHOKE SIZE	58						
FLOW TUBING PRESSURE	690						

A record of the formations drilled through, and pertinent remarks are presented on the reverse. I declare that I have knowledge of the contents of this report and am authorized by my organization to make this report, which was prepared by the or under my supervision and direction, with the data and facts stated herein to be true, correct, and complete to the best of my knowledge and belief.

Joni Reeder
SIGNATURE NAME (PRINT OR TYPE) DATE PHONE NUMBER
3817 NW Expressway, Suite 500 Oklahoma City OK 73112 3/19/20 405-246-3100
ADDRESS CITY STATE ZIP EMAIL ADDRESS
joni_reeder@eogresources.com

PLEASE TYPE OR USE BLACK INK ONLY
FORMATION RECORD

Give formation names and tops, if available, or descriptions and thickness of formations drilled through. Show intervals cored or drillstem tested.

LEASE NAME NIGHTHAWK 0718 WELL NO. 7H

NAMES OF FORMATIONS	MD	TOP
WOODFORD		9,621

FOR COMMISSION USE ONLY

ITD on file YES NO

APPROVED _____ DISAPPROVED _____

2) Reject Codes _____

Were open hole logs run? yes no

Date Last log was run N/A

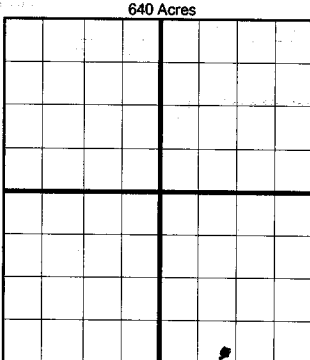
Was CO₂ encountered? yes no at what depths? _____

Was H₂S encountered? yes no at what depths? _____

Were unusual drilling circumstances encountered? yes no

If yes, briefly explain below: _____

Other remarks: _____



BOTTOM HOLE LOCATION FOR DIRECTIONAL HOLE

SEC	TWP	RGE	COUNTY
Spot Location	1/4	1/4	1/4
Measured Total Depth	True Vertical Depth		BHL From Lease, Unit, or Property Line:

BOTTOM HOLE LOCATION FOR HORIZONTAL HOLE: (LATERALS)

LATERAL #1

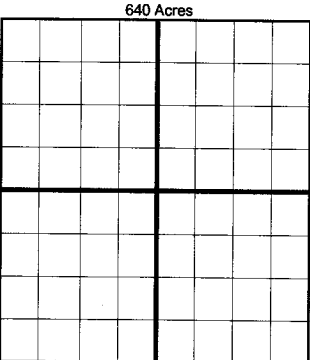
Per exhibit

SEC	TWP	RGE	COUNTY
18	9N	4W	McClain
Spot Location	SE 1/4	SE 1/4	SW 1/4
Depth of Deviation	9,243	Radius of Turn	672
Measured Total Depth	20,157	True Vertical Depth	9,335
		Direction	186
		Total Length	10,242
		FSL	<i>176</i>
		FEL	<i>1531</i>
		FEL	<i>1582</i>
		FEL	<i>172</i>
		FEL	<i>176</i>

If more than three drainholes are proposed, attach a separate sheet indicating the necessary information.

Direction must be stated in degrees azimuth. Please note, the horizontal drainhole and its end point must be located within the boundaries of the lease or spacing unit.

Directional surveys are required for all drainholes and directional wells.



LATERAL #2

SEC	TWP	RGE	COUNTY
Spot Location	1/4	1/4	1/4
Depth of Deviation	Radius of Turn		Direction
Measured Total Depth	True Vertical Depth		BHL From Lease, Unit, or Property Line:

LATERAL #3

SEC	TWP	RGE	COUNTY
Spot Location	1/4	1/4	1/4
Depth of Deviation	Radius of Turn		Direction
Measured Total Depth	True Vertical Depth		BHL From Lease, Unit, or Property Line:

Image 1002A

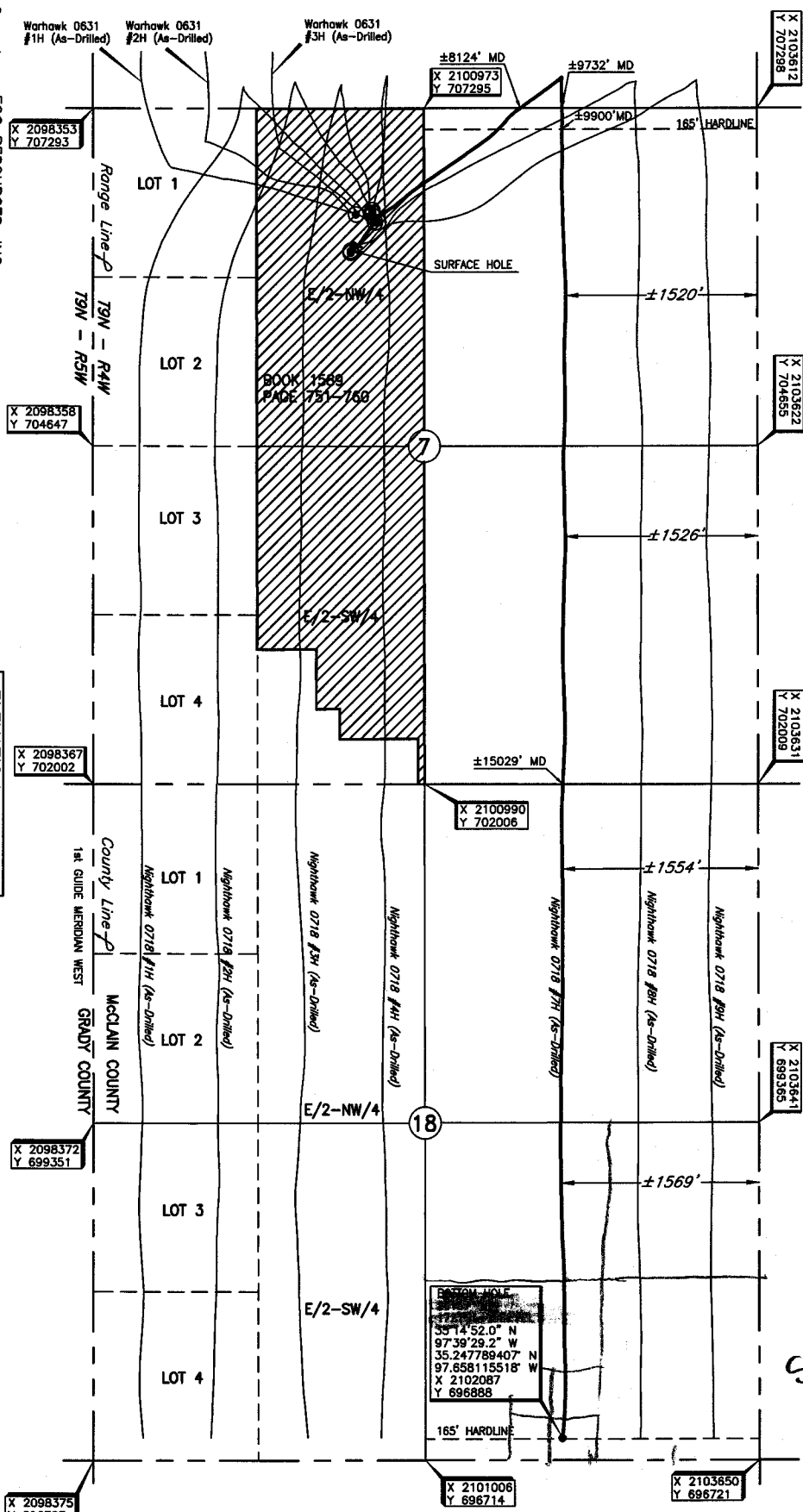
McCLAIN County, Oklahoma
1068' FNL - 2044' FWL Section 7 Township 9N Range 4W I.M.

Operator: EOG RESOURCES, INC.
 Lease Name: NIGHTHAWK 0718
 Topography & Vegetation: Location fell on level pod.
 Good Drill Site? Yes
 Best Accessibility to Location: From North off county road
 Distance & Direction: From the jct. of St. Hwy. 76 and St. Hwy. 37, go 1 mile South on St. Hwy. 76, then 1 mile West to the NW corner of Section 7, 19N - R4W.
 Reference Stakes or Alternate Location: Stakes Set None

Well No.: 7H
 ELEVATION: 1353' Gr. at Level Pod

DATUM: NAD-27
 LAT: 35°16'24.5" N
 LONG: 97°39'49.2" W
 LAT: 35°27'46.2363" N
 LONG: 97°66'36.65285" W
 STATE PLANE COORDINATES: (US Feet)
 ZONE: OK SOUTH
 X: 2100399
 Y: 706227

This information was gathered with a GPS receiver with ±1 foot Horiz./Vert. accuracy



EMERGENCY
 35°14'52.0" N
 97°39'29.2" W
 35.247798407
 97.668115518
 X 2102087
 Y 696888

BHL
 SE SE SW SE

Date of Drawing: Dec. 10, 2019
 Project # 124508 Date Staked: Aug. 07, 2019 LC

FINAL AS-DRILLED PLAT

AS-DRILLED INFORMATION
 FURNISHED BY EOG RESOURCES