

Oklahoma Corporation Commission
 Oil & Gas Conservation Division
 Post Office Box 52000
 Oklahoma City, Oklahoma 73152-2000
 Rule 165: 10-3-25

Form 1002A

API No.: 35087222600001

Completion Report

Spud Date: October 27, 2019

OTC Prod. Unit No.: 087-226676-0-0000

Drilling Finished Date: November 26, 2019

1st Prod Date: March 07, 2020

Completion Date: March 07, 2020

Drill Type: HORIZONTAL HOLE

Min Gas Allowable: Yes

Well Name: NIGHTHAWK 0718 8H

Purchaser/Measurer: ENABLE GATHERING & PROCESSING

Location: MCCLAIN 7 9N 4W
 SW SE NE NW
 1113 FNL 2044 FWL of 1/4 SEC
 Latitude: 35.273338702 Longitude: -97.663665573
 Derrick Elevation: 0 Ground Elevation: 1353

First Sales Date: 03/07/2020

Operator: EOG RESOURCES INC 16231

14701 HERTZ QUAIL SPRINGS PKWY
 OKLAHOMA CITY, OK 73134-2646

Completion Type	
X	Single Zone
	Multiple Zone
	Commingled

Location Exception	
Order No	
701699	

Increased Density	
Order No	
700718	
700719	

Casing and Cement							
Type	Size	Weight	Grade	Feet	PSI	SAX	Top of CMT
SURFACE	9 5/8	36	J-55	1206		480	SURFACE
PRODUCTION	5 1/2	20	P-110	20253		2215	1408

Liner								
Type	Size	Weight	Grade	Length	PSI	SAX	Top Depth	Bottom Depth
There are no Liner records to display.								

Total Depth: 20264

Packer	
Depth	Brand & Type
There are no Packer records to display.	

Plug	
Depth	Plug Type
There are no Plug records to display.	

Initial Test Data

Test Date	Formation	Oil BBL/Day	Oil-Gravity (API)	Gas MCF/Day	Gas-Oil Ratio Cu FT/BBL	Water BBL/Day	Pumpin or Flowing	Initial Shut-In Pressure	Choke Size	Flow Tubing Pressure
Mar 09, 2020	WOODFORD	126	40	140	1111	8364	FLOWING	1500	56	527

Completion and Test Data by Producing Formation

Formation Name: WOODFORD

Code: 319WDFD

Class: OIL

Spacing Orders

Order No	Unit Size
632844	640
682713	640
703577	MULTIUNIT

Perforated Intervals

From	To
10035	15028
15145	20155

Acid Volumes

1,100 GALLONS 7.5% HCL TOTAL ACID

Fracture Treatments

22,620,452 GALLONS TOTAL FLUID, 30,482,255 POUNDS TOTAL PROPPANT
--

Formation	Top
WOODFORD MD	9872
WOODFORD TVD	9056

Were open hole logs run? No

Date last log run:

Were unusual drilling circumstances encountered? No

Explanation:

Other Remarks

OCC - THIS DOCUMENT IS ACCEPTED BASED ON THE DATA SUBMITTED NEITHER THE FINAL LOCATION EXCEPTION NOR THE FINAL MULTIUNIT ORDER HAS BEEN ISSUED.

Lateral Holes

Sec: 18 TWP: 9N RGE: 4W County: MCCLAIN

SE SW SE SE

177 FSL 914 FEL of 1/4 SEC

Depth of Deviation: 9400 Radius of Turn: 751 Direction: 182 Total Length: 10113

Measured Total Depth: 20264 True Vertical Depth: 9326 End Pt. Location From Release, Unit or Property Line: 177

FOR COMMISSION USE ONLY

1145226

Status: Accepted

RECEIVED

Form 1002A
Rev. 2009

MAR 20 2020

OKLAHOMA CORPORATION
COMMISSION

API NO. 087-22260
OTC PROD. UNIT NO. 087-226676

PLEASE TYPE OR USE BLACK INK ONLY
NOTE:

Attach copy of original 1002A
if recompletion or reentry.

OKLAHOMA CORPORATION COMMISSION
Oil & Gas Conservation Division
Post Office Box 52000
Oklahoma City, Oklahoma 73152-2000
Rule 165-10-3-25

ORIGINAL
 AMENDED (Reason)

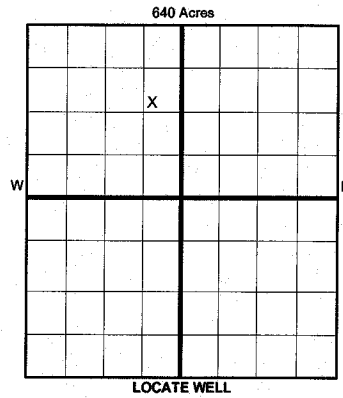
COMPLETION REPORT

TYPE OF DRILLING OPERATION

STRAIGHT HOLE DIRECTIONAL HOLE HORIZONTAL HOLE
 SERVICE WELL

If directional or horizontal, see reverse for bottom hole location.

SPUD DATE 10/27/2019
DRLG FINISHED DATE 11/26/19
DATE OF WELL COMPLETION 3/7/20
1st PROD DATE 3/7/20
RECOMP DATE
WELL NO. 8H
FWL OF 1/4 SEC 2,044
Longitude (if known) -97.663665573



COUNTY McClain SEC 7 TWP 9N RGE 4W
LEASE NAME Nighthawk 0718
SW 1/4 SE 1/4 NE 1/4 NW 1/4 FNL 1,113
ELEVATION Ground 1,353
OPERATOR NAME EOG Resources, Inc.
ADDRESS 3817 NW Expressway, Suite 500
CITY Oklahoma City STATE OK ZIP 73112

COMPLETION TYPE

SINGLE ZONE
 MULTIPLE ZONE
 COMMINGLED
LOCATION EXCEPTION ORDER 701699 I.O.
INCREASED DENSITY ORDER NO. 700718, 700719

CASING & CEMENT (Form 1002C must be attached)

TYPE	SIZE	WEIGHT	GRADE	FEET	PSI	SAX	TOP OF CMT
CONDUCTOR							
SURFACE	9 - 5/8	36	J-55	1,206		480	SURFACE
INTERMEDIATE							
PRODUCTION	5 - 1/2	20	P-110	20,253		2,215	1,408
LINER							
TOTAL DEPTH							20,264

PACKER @ _____ BRAND & TYPE _____ PLUG @ _____ TYPE _____ PLUG @ _____ TYPE _____
PACKER @ _____ BRAND & TYPE _____ PLUG @ _____ TYPE _____ PLUG @ _____ TYPE _____

COMPLETION & TEST DATA BY PRODUCING FORMATION

FORMATION	WOODFORD
SPACING & SPACING ORDER NUMBER	640/632844,682713 - MU /703577 I.O.
CLASS: Oil, Gas, Dry, Inj, Disp, Comm Disp, Svc	OIL
PERFORATED INTERVALS	10035-15028 10,035-20,155 15145-20155
ACID/VOLUME	TOTAL ACID - 1,100 GALS 7.5% HCL
FRACTURE TREATMENT (Fluids/Prop Amounts)	TOTAL FLUID - 22,620,452 GALS TOTAL PROP - 30,482,255 LBS

Monitor Report
to Free Tools

Min Gas Allowable (165-10-17-7) OR Oil Allowable (165-10-13-3)
Gas Purchaser/Measurer _____ Enable Gathering & Processing
First Sales Date 3/7/2020

INITIAL TEST DATA

INITIAL TEST DATE	3/9/2020
OIL-BBL/DAY	126
OIL-GRAVITY (API)	40
GAS-MCF/DAY	140
GAS-OIL RATIO CU FT/BBL	1,111
WATER-BBL/DAY	8,364
PUMPING OR FLOWING	FLOWING
INITIAL SHUT-IN PRESSURE	1,500
CHOKE SIZE	56
FLOW TUBING PRESSURE	527

A record of the formations drilled through, and pertinent remarks are presented on the reverse. I declare that I have knowledge of the contents of this report and am authorized by my organization to make this report, which was prepared by me or under my supervision and direction, with the data and facts stated herein to be true, correct, and complete to the best of my knowledge and belief.

Joni Reeder
SIGNATURE NAME (PRINT OR TYPE) DATE 3/19/20 PHONE NUMBER 405-246-3100
3817 NW Expressway, Suite 500 Oklahoma City OK 73112
ADDRESS CITY STATE ZIP EMAIL ADDRESS joni_reeder@eogresources.com

PLEASE TYPE OR USE BLACK INK ONLY
FORMATION RECORD

Give formation names and tops, if available, or descriptions and thickness of formations drilled through. Show intervals cored or drillstem tested.

LEASE NAME NIGHTHAWK 0718 WELL NO. 8H

NAMES OF FORMATIONS		TOP
WOODFORD	MD	9,872

FOR COMMISSION USE ONLY

ITD on file YES NO

APPROVED _____ DISAPPROVED _____

2) Reject Codes _____

Were open hole logs run? yes no

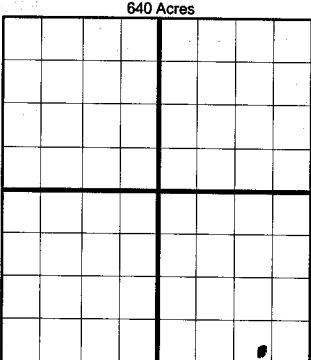
Date Last log was run N/A

Was CO₂ encountered? yes no at what depths? _____

Was H₂S encountered? yes no at what depths? _____

Were unusual drilling circumstances encountered? yes no
 If yes, briefly explain below: _____

Other remarks:



BOTTOM HOLE LOCATION FOR DIRECTIONAL HOLE

SEC	TWP	RGE	COUNTY
Spot Location			
	1/4	1/4	1/4
Measured Total Depth	True Vertical Depth	BHL From Lease, Unit, or Property Line:	

BOTTOM HOLE LOCATION FOR HORIZONTAL HOLE: (LATERALS)

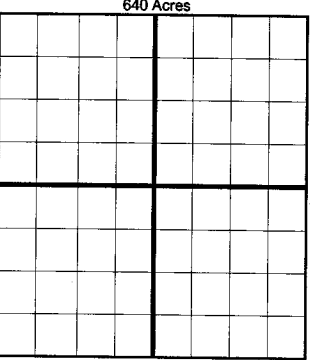
LATERAL #1

SEC	TWP	RGE	COUNTY
18	9N	4W	McClain
Spot Location			
SE	1/4	SW	1/4
SE	1/4	SE	1/4
Depth of Deviation	9,400	Radius of Turn	751
Direction	182	Total Length	10,113
Measured Total Depth	20,264	True Vertical Depth	9,326
BHL From Lease, Unit, or Property Line: <u>170 177</u>			

If more than three drainholes are proposed, attach a separate sheet indicating the necessary information.

Direction must be stated in degrees azimuth. Please note, the horizontal drainhole and its end point must be located within the boundaries of the lease or spacing unit.

Directional surveys are required for all drainholes and directional wells.



LATERAL #2

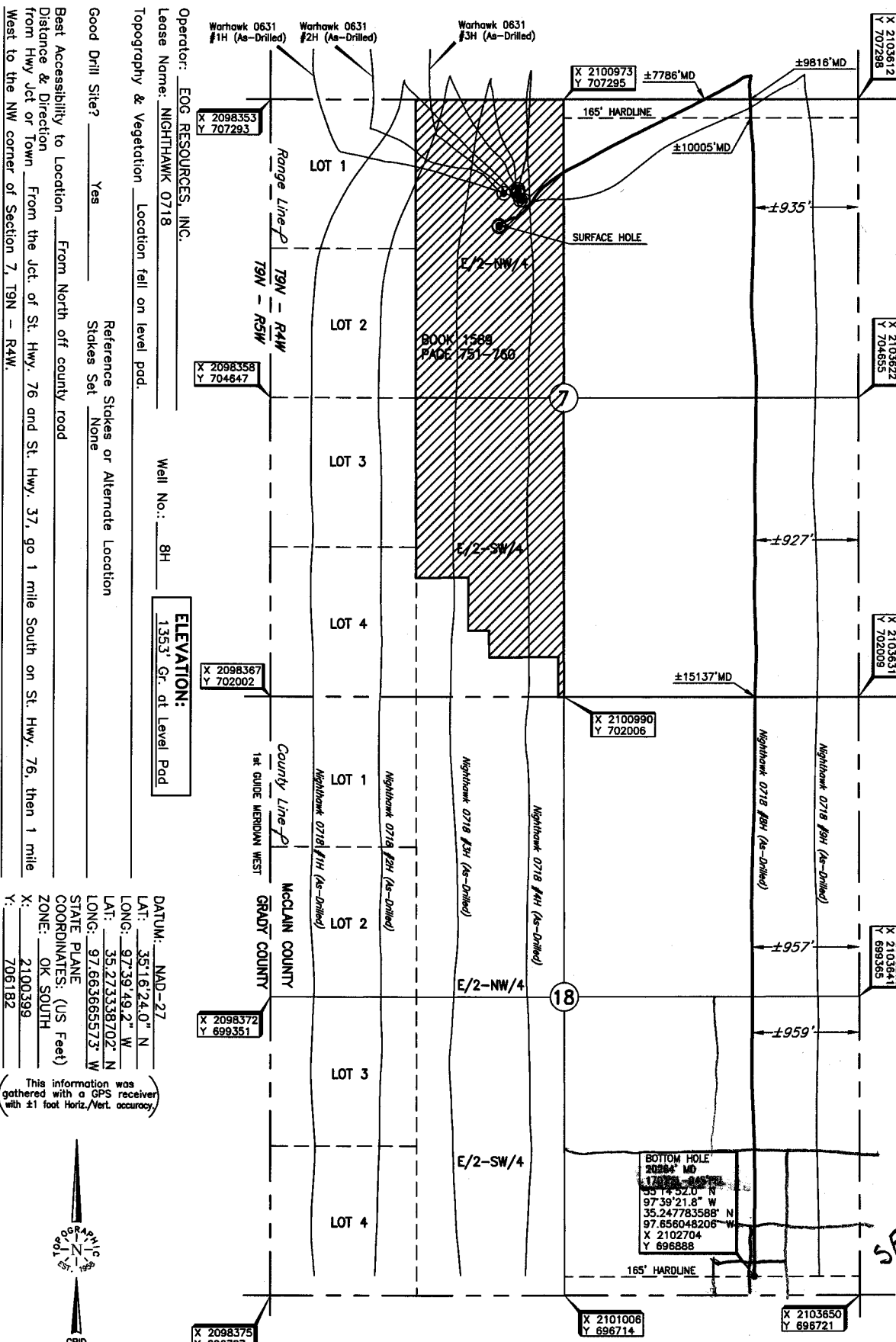
SEC	TWP	RGE	COUNTY
Spot Location			
	1/4	1/4	1/4
Depth of Deviation		Radius of Turn	
Direction			Total Length
Measured Total Depth		True Vertical Depth	
BHL From Lease, Unit, or Property Line:			

LATERAL #3

SEC	TWP	RGE	COUNTY
Spot Location			
	1/4	1/4	1/4
Depth of Deviation		Radius of Turn	
Direction			Total Length
Measured Total Depth		True Vertical Depth	
BHL From Lease, Unit, or Property Line:			

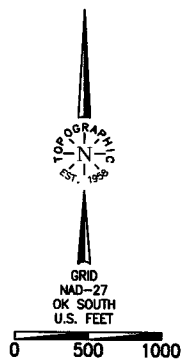
Image 1002A

McCLAIN County, Oklahoma
 1113' FNL - 2044' FWL Section 7 Township 9N Range 4W I.M.



DATUM: NAD-27
 LAT: 35°16'24.0" N
 LONG: 97°39'49.2" W
 LAT: 35°27'33.8702" N
 LONG: 97°66'36.6573" W
 STATE PLANE
 COORDINATES: (US Feet)
 ZONE: OK SOUTH
 X: 2100399
 Y: 706182

This information was gathered with a GPS receiver with ±1 foot Horiz./Vert. accuracy



BHL
 SE SW SE SE

Date of Drawing: Nov. 26, 2019
 Project # 124508 Date Staked: Aug. 07, 2019 LC

FINAL AS-DRILLED PLAT

AS-DRILLED INFORMATION
 FURNISHED BY EOG RESOURCES