

Oklahoma Corporation Commission
 Oil & Gas Conservation Division
 Post Office Box 52000
 Oklahoma City, Oklahoma 73152-2000
 Rule 165: 10-3-25

Form 1002A

API No.: 35087222660000

Completion Report

Spud Date: October 28, 2019

OTC Prod. Unit No.: 087-226677-0-0000

Drilling Finished Date: November 12, 2019

1st Prod Date: March 07, 2020

Completion Date: March 07, 2020

Drill Type: HORIZONTAL HOLE

Min Gas Allowable: Yes

Well Name: NIGHTHAWK 0718 9H

Purchaser/Measurer: ENABLE GATHERING & PROCESSING

Location: MCCLAIN 7 9N 4W
 SW SE NE NW
 1128 FNL 2044 FWL of 1/4 SEC
 Latitude: 35.273297558 Longitude: -97.663665683
 Derrick Elevation: 0 Ground Elevation: 1353

First Sales Date: 03/07/2020

Operator: EOG RESOURCES INC 16231

14701 HERTZ QUAIL SPRINGS PKWY
 OKLAHOMA CITY, OK 73134-2646

Completion Type	
X	Single Zone
	Multiple Zone
	Commingled

Location Exception	
Order No	
701700	

Increased Density	
Order No	
700718	
700719	

Casing and Cement							
Type	Size	Weight	Grade	Feet	PSI	SAX	Top of CMT
SURFACE	9 5/8	36	J-55	1206		480	SURFACE
PRODUCTION	5 1/2	20	P-110	20655		2255	6383

Liner								
Type	Size	Weight	Grade	Length	PSI	SAX	Top Depth	Bottom Depth
There are no Liner records to display.								

Total Depth: 20670

Packer	
Depth	Brand & Type
There are no Packer records to display.	

Plug	
Depth	Plug Type
There are no Plug records to display.	

Initial Test Data

Test Date	Formation	Oil BBL/Day	Oil-Gravity (API)	Gas MCF/Day	Gas-Oil Ratio Cu FT/BBL	Water BBL/Day	Pumpin or Flowing	Initial Shut-In Pressure	Choke Size	Flow Tubing Pressure
Mar 09, 2020	WOODFORD	164	40	267	1628	9354	FLOWING	1500	60	487

Completion and Test Data by Producing Formation

Formation Name: WOODFORD

Code: 319WDFD

Class: OIL

Spacing Orders

Order No	Unit Size
632844	640
682713	640
703578	MULTIUNIT

Perforated Intervals

From	To
10709	15543
15557	20558

Acid Volumes

1,000 GALLONS 7.5% HCL TOTAL ACID

Fracture Treatments

20,029,884 GALLONS TOTAL FLUID, 27,863,116 POUNDS TOTAL PROPPANT
--

Formation	Top
WOODFORD MD	10124
WOODFORD TVD	9049

Were open hole logs run? No

Date last log run:

Were unusual drilling circumstances encountered? No

Explanation:

Other Remarks

OCC - THIS DOCUMENT IS ACCEPTED BASED ON THE DATA SUBMITTED NEITHER THE FINAL LOCATION EXCEPTION NOR THE FINAL MULTIUNIT ORDERS HAVE BEEN ISSUED.

Lateral Holes

Sec: 18 TWP: 9N RGE: 4W County: MCCLAIN

SW SE SE SE

175 FSL 361 FEL of 1/4 SEC

Depth of Deviation: 9755 Radius of Turn: 790 Direction: 178 Total Length: 10125

Measured Total Depth: 20670 True Vertical Depth: 9296 End Pt. Location From Release, Unit or Property Line: 175

FOR COMMISSION USE ONLY

1145227

Status: Accepted

RECEIVED

Form 1002A Rev. 2009

MAR 20 2020

OKLAHOMA CORPORATION COMMISSION

API NO. 087-22266
OTC PROD. UNIT NO. 087-226677

PLEASE TYPE OR USE BLACK INK ONLY
NOTE:

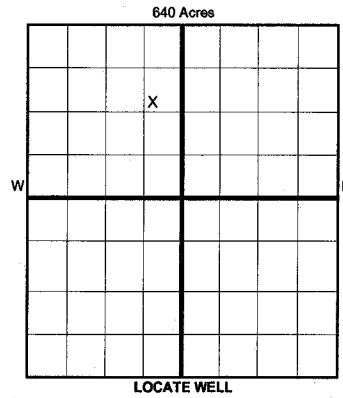
Attach copy of original 1002A if recompletion or reentry.

OKLAHOMA CORPORATION COMMISSION
Oil & Gas Conservation Division
Post Office Box 52000
Oklahoma City, Oklahoma 73152-2000
Rule 165:10-3-25

[X] ORIGINAL
[] AMENDED (Reason)

COMPLETION REPORT

TYPE OF DRILLING OPERATION: STRAIGHT HOLE, DIRECTIONAL HOLE, [X] HORIZONTAL HOLE, SERVICE WELL.
COUNTY: McClain, SEC 7, TWP 9N, RGE 4W.
LEASE NAME: NIGHTHAWK 0718, WELL NO. 9H.
DATE OF WELL COMPLETION: 3/7/20.
1st PROD DATE: 3/7/20.
RECOMP DATE:
ELEVATION: 1,353.
OPERATOR: EOG Resources, Inc.
ADDRESS: 3817 NW Expressway, Suite 500.
CITY: Oklahoma City, STATE: OK, ZIP: 73112.



COMPLETION TYPE: [X] SINGLE ZONE, [] MULTIPLE ZONE, [] COMMINGLED.
LOCATION EXCEPTION ORDER: 701700 I.O.
INCREASED DENSITY ORDER NO.: 700718, 700719

CASING & CEMENT (Form 1002C must be attached)
Table with columns: TYPE, SIZE, WEIGHT, GRADE, FEET, PSI, SAX, TOP OF CMT.
Rows: CONDUCTOR, SURFACE (9-5/8, 36, J-55, 1,206, 480, SURFACE), INTERMEDIATE, PRODUCTION (5-1/2, 20, P-110, 20,655, 2,255, 6,383), LINER.
TOTAL DEPTH: 20,670

PACKER @ BRAND & TYPE PLUG @ TYPE PLUG @ TYPE
PACKER @ BRAND & TYPE PLUG @ TYPE PLUG @ TYPE

COMPLETION & TEST DATA BY PRODUCING FORMATION 319 WDFD

Table with columns: FORMATION, SPACING & SPACING ORDER NUMBER, CLASS, PERFORATED INTERVALS, ACID/VOLUME, FRACTURE TREATMENT.
FORMATION: WOODFORD
SPACING & SPACING ORDER NUMBER: 640/632844,682713 - MU/703578 I.O.
CLASS: OIL
PERFORATED INTERVALS: 10709-15543, 15557-20558
ACID/VOLUME: TOTAL ACID - 1000 GALS, 7.5% HCL
FRACTURE TREATMENT: TOTAL FLUID - 20,029,884 GALS, TOTAL PROP - 27,863,116 LBS

Monitor Report to Frac Focus

Min Gas Allowable (165:10-17-7) OR [X] Oil Allowable (165:10-13-3)
Enable Gathering & Processing
First Sales Date: 3/7/2020

INITIAL TEST DATA
Table with columns: INITIAL TEST DATE, OIL-BBL/DAY, OIL-GRAVITY (API), GAS-MCF/DAY, GAS-OIL RATIO CU FT/BBL, WATER-BBL/DAY, PUMPING OR FLOWING, INITIAL SHUT-IN PRESSURE, CHOKE SIZE, FLOW TUBING PRESSURE.
Values: 3/9/2020, 164, 40, 267, 1,628, 9,354, FLOWING, 1,500, 60, 487

A record of the formations drilled through, and pertinent remarks are presented on the reverse. I declare that I have knowledge of the contents of this report and am authorized by my organization to make this report...
Signature: Joni Reeder
Name: Joni Reeder
Date: 3/19/20
Phone Number: 405-246-3100
Address: 3817 NW Expressway, Suite 500, Oklahoma City, OK 73112
Email Address: joni_reeder@eogresources.com

PLEASE TYPE OR USE BLACK INK ONLY
FORMATION RECORD

Give formation names and tops, if available, or descriptions and thickness of formations drilled through. Show intervals cored or drillstem tested.

LEASE NAME NIGHTHAWK 0718 WELL NO. 9H

NAMES OF FORMATIONS	MD	TOP
WOODFORD		10,124

FOR COMMISSION USE ONLY

ITD on file YES NO

APPROVED _____ DISAPPROVED _____

2) Reject Codes

Were open hole logs run? yes no

Date Last log was run _____ N/A

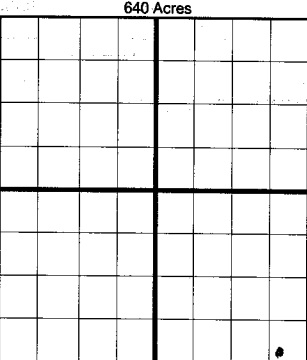
Was CO₂ encountered? yes no at what depths? _____

Was H₂S encountered? yes no at what depths? _____

Were unusual drilling circumstances encountered? yes no

If yes, briefly explain below: _____

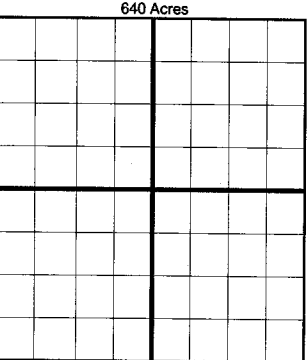
Other remarks:



If more than three drainholes are proposed, attach a separate sheet indicating the necessary information.

Direction must be stated in degrees azimuth. Please note, the horizontal drainhole and its end point must be located within the boundaries of the lease or spacing unit.

Directional surveys are required for all drainholes and directional wells.



BOTTOM HOLE LOCATION FOR DIRECTIONAL HOLE

SEC	TWP	RGE	COUNTY			
Spot Location	1/4	1/4	1/4	Feet From 1/4 Sec Lines	FSL	FWL
Measured Total Depth	True Vertical Depth		BHL From Lease, Unit, or Property Line:			

BOTTOM HOLE LOCATION FOR HORIZONTAL HOLE: (LATERALS)

exhibit LE

LATERAL #1	SEC	TWP	RGE	COUNTY			
Spot Location	18	9N	4W	McClain			
SW 1/4	SE 1/4	SE 1/4	SE 1/4	Feet From 1/4 Sec Lines	FSL <i>175</i>	FEL <i>361</i>	
Depth of Deviation	9,755	Radius of Turn	790	Direction	178	Total Length	10,125
Measured Total Depth	True Vertical Depth		BHL From Lease, Unit, or Property Line:				
	20,670	9,296	<i>176 175</i>				

LATERAL #2

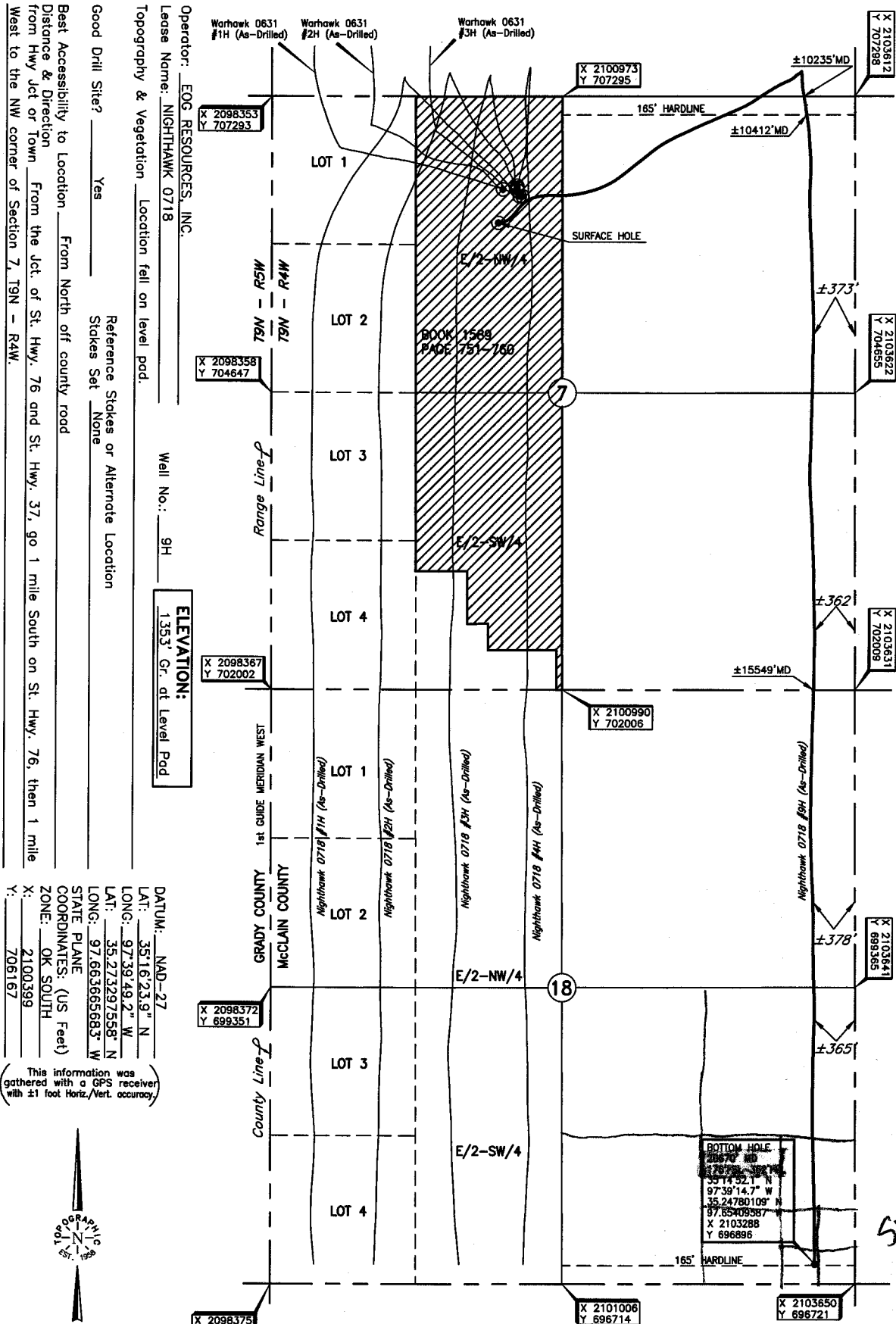
SEC	TWP	RGE	COUNTY				
Spot Location	1/4	1/4	1/4	1/4	Feet From 1/4 Sec Lines	FSL	FWL
Depth of Deviation	Radius of Turn		Direction		Total Length		
Measured Total Depth	True Vertical Depth		BHL From Lease, Unit, or Property Line:				

LATERAL #3

SEC	TWP	RGE	COUNTY				
Spot Location	1/4	1/4	1/4	1/4	Feet From 1/4 Sec Lines	FSL	FWL
Depth of Deviation	Radius of Turn		Direction		Total Length		
Measured Total Depth	True Vertical Depth		BHL From Lease, Unit, or Property Line:				

Image @ 1002A

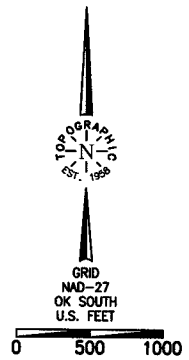
McCLAIN County, Oklahoma
 1128' FNL - 2044' FWL Section 7 Township 9N Range 4W I.M.



Operator: EOG RESOURCES, INC.
 Lease Name: NIGHTHAWK 0718
 Topography & Vegetation: Location fall on level pod.
 Good Drill Site? Yes
 Reference Stakes or Alternate Location: Stakes Set None
 Best Accessibility to Location: From North off county road
 Distance & Direction: From the jct. of St. Hwy. 76 and St. Hwy. 37, go 1 mile South on St. Hwy. 76, then 1 mile West to the NW corner of Section 7, T9N - R4W.

DATUM: NAD-27
 LAT: 35°16'23.9" N
 LONG: 97°39'49.2" W
 LAT: 35°27'32.97558" N
 LONG: 97°6'36.5683" W
 STATE PLANE
 COORDINATES: (US Feet)
 ZONE: OK SOUTH
 X: 2100399
 Y: 706167

This information was gathered with a GPS receiver with ±1 foot Horiz./Vert. accuracy



Date of Drawing: Nov. 13, 2019
 Project # 124508J Date Staked: Aug. 07, 2019 LC

FINAL AS-DRILLED PLAT

AS-DRILLED INFORMATION
 FURNISHED BY EOG RESOURCES