

Oklahoma Corporation Commission
 Oil & Gas Conservation Division
 Post Office Box 52000
 Oklahoma City, Oklahoma 73152-2000
 Rule 165: 10-3-25

Form 1002A

API No.: 35087222670001

Completion Report

Spud Date: December 24, 2019

OTC Prod. Unit No.: 087-226913-0-0000

Drilling Finished Date: January 07, 2020

1st Prod Date: September 14, 2020

Completion Date: September 14, 2020

Drill Type: HORIZONTAL HOLE

Min Gas Allowable: Yes

Well Name: LAUBHAN 0409 5H

Purchaser/Measurer: ENABLE GATHERING & PROCESSING

Location: MCCLAIN 4 8N 4W
 E2 NW NW NE
 330 FNL 2270 FEL of 1/4 SEC
 Latitude: 35.202854688 Longitude: -97.624977529
 Derrick Elevation: 0 Ground Elevation: 1260

First Sales Date: 09/14/2020

Operator: EOG RESOURCES INC 16231

14701 HERTZ QUAIL SPRINGS PKWY
 OKLAHOMA CITY, OK 73134-2646

Completion Type	
X	Single Zone
	Multiple Zone
	Commingled

Location Exception	
Order No	
715208	

Increased Density	
Order No	
N/A	

Casing and Cement							
Type	Size	Weight	Grade	Feet	PSI	SAX	Top of CMT
SURFACE	9 5/8	36	J-55	1014		350	SURFACE
PRODUCTION	5 1/2	20	P-110	19970		2705	1082

Liner								
Type	Size	Weight	Grade	Length	PSI	SAX	Top Depth	Bottom Depth
There are no Liner records to display.								

Total Depth: 19981

Packer	
Depth	Brand & Type
There are no Packer records to display.	

Plug	
Depth	Plug Type
There are no Plug records to display.	

Initial Test Data

Test Date	Formation	Oil BBL/Day	Oil-Gravity (API)	Gas MCF/Day	Gas-Oil Ratio Cu FT/BBL	Water BBL/Day	Pumpin or Flowing	Initial Shut-In Pressure	Choke Size	Flow Tubing Pressure
Oct 28, 2020	WOODFORD	271	40	164	605	56	FLOWING	1400	52/128	1157

Completion and Test Data by Producing Formation

Formation Name: WOODFORD

Code: 319WDFD

Class: OIL

Spacing Orders

Order No	Unit Size
588047	640 IRREGULAR UNIT
698391	320
715207	MULTIUNIT

Perforated Intervals

From	To
9813	19877

Acid Volumes

2,000 GALLONS 7.5% HCL TOTAL ACID

Fracture Treatments

20,458,604 GALLONS TOTAL FLUID, 23,662,568 POUNDS TOTAL PROPPANT
--

Formation	Top
MD	9482

Were open hole logs run? No

Date last log run:

Were unusual drilling circumstances encountered? No

Explanation:

Other Remarks

OCC - THE IRREGULAR SPACED UNIT CREATED BY ORDER NUMBER 588047 COVERS THE E/2 SECTION 8 AND W/2 SECTION 9-8N-4W CREATING A 640 ACRE UNIT. ORDER NUMBER 698391 CREATES A 320 ACRE UNIT COVERING THE W/2 SECTION 4-8N-4W

Lateral Holes

Sec: 9 TWP: 8N RGE: 4W County: MCCLAIN

SW SE SE SW

173 FSL 357 FEL of 1/4 SEC

Depth of Deviation: 9070 Radius of Turn: 779 Direction: 178 Total Length: 10132

Measured Total Depth: 19981 True Vertical Depth: 9581 End Pt. Location From Release, Unit or Property Line: 173

FOR COMMISSION USE ONLY

1145830

Status: Accepted

OIL AND GAS CONSERVATION DIVISION
P.O. Box 52000
Oklahoma City, OK 73152-2000
405-522-0577
occentralprocessing@occ.ok.gov



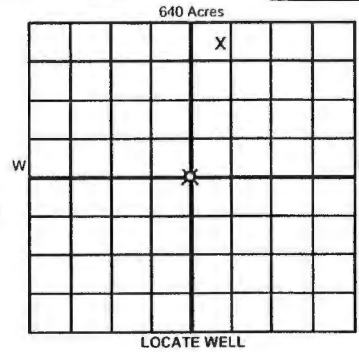
Form 1002A
Rev. 2009

API NO. 087-22267
OTC PROD. UNIT NO. 087-226913

ORIGINAL WELL COMPLETION REPORT (PLEASE TYPE OR USE BLACK INK ONLY)
 AMENDED (Reason) OAC 165:10-3-25

TYPE OF DRILLING OPERATION
 STRAIGHT HOLE DIRECTIONAL HOLE HORIZONTAL HOLE
 SERVICE WELL
If directional or horizontal, see reverse for bottom hole location.

COUNTY **MCCLAIN** SEC **4** TWP **8N** RGE **4W** SPUD DATE **12/24/19**
LEASE NAME **LAUBHAN 0409** WELL NO. **5H** DRLG FINISHED DATE **1/7/20**
DATE OF WELL COMPLETION **9/14/20** 1st PROD DATE **9/14/20**
ELEVATION Derrick FL **Ground 1,260** 1/4 SEC OF 330 FNL **1/4 SEC 2,270 FEET** RECOMP DATE
Latitude (if known) **35.202854686** Longitude (if known) **-97.624977529**
OPERATOR NAME **EOG Resources, Inc.** OTC / OCC OPERATOR NO. **16231**
ADDRESS **14701 Hertz Quail Springs Pkwy**
CITY **Oklahoma City** STATE **Oklahoma** ZIP **73134**



COMPLETION TYPE
 SINGLE ZONE
 MULTIPLE ZONE
Application Date
COMMINGLED Application Date **7/5/20 F0**
LOCATION EXCEPTION ORDER NO. **704255 F0**
INCREASED DENSITY ORDER NO. **N/A**

CASING & CEMENT (Attach Form 1002C)

TYPE	SIZE	WEIGHT	GRADE	FEET	PSI	SAX	TOP OF CMT	
CONDUCTOR								
SURFACE	9 5/8	36	J-55	1,014		350	SURFACE	
INTERMEDIATE								
PRODUCTION	5 1/2	20	P-110	19,970		2,205	1,082	
LINER								
							TOTAL DEPTH	19,981

PACKER @ _____ BRAND & TYPE _____ PLUG @ _____ TYPE _____ PLUG @ _____ TYPE _____
PACKER @ _____ BRAND & TYPE _____ PLUG @ _____ TYPE _____ PLUG @ _____ TYPE _____

COMPLETION & TEST DATA BY PRODUCING FORMATION **319WDFD**

FORMATION	WOODFORD						
SPACING & SPACING ORDER NUMBER	640 IRR UNIT/588047	320/698391	MU/704254	715207F0			Monitor Report to Frac Focus
CLASS: Oil, Gas, Dry, Inj, Disp, Comm Disp, Svc	OIL						
PERFORATED INTERVALS	9,813 - 19,877						
ACID/VOLUME	Total Acid - 2000 Gals 7.5% HCL						
FRACTURE TREATMENT (Fluids/Prop Amounts)	Total Fluid - 20,458,604 GALS Total Prop - 23,662,568 LBS						

RECEIVED
NOV 13 2020
Oklahoma Corporation Commission

Min Gas Allowable (165:10-17-7) Gas Purchaser/Measurer First Sales Date **9/14/2020**
OR
 Oil Allowable (165:10-13-3) Enable Gathering & Processing

INITIAL TEST DATA

INITIAL TEST DATE	10/28/2020				
OIL-BBL/DAY	271				
OIL-GRAVITY (API)	40				
GAS-MCF/DAY	164				
GAS-OIL RATIO CU FT/BBL	605				
WATER-BBL/DAY	56				
PUMPING OR FLOWING	FLOWING				
INITIAL SHUT-IN PRESSURE	1,400				
CHOKE SIZE	52/128				
FLOW TUBING PRESSURE	1,157				

A record of the formations drilled through, and pertinent remarks are presented on the reverse. I declare that I have knowledge of the contents of this report and am authorized by my organization to make this report, which was prepared by me or under my supervision and direction, with the data and facts stated herein to be true, correct, and complete to the best of my knowledge and belief.

Joni Reeder 405-246-3100
SIGNATURE NAME (PRINT OR TYPE) DATE PHONE NUMBER
14701 Hertz Quail Springs Pkwy Oklahoma City Oklahoma 73134 joni_reeder@eogresources.com
ADDRESS CITY STATE ZIP EMAIL ADDRESS

PLEASE TYPE OR USE BLACK INK ONLY
FORMATION RECORD

Give formation names and tops, if available, or descriptions and thickness of formations drilled through. Show intervals cored or drillstem tested.

LEASE NAME LAUBHAN 0409

WELL NO. 5H

NAMES OF FORMATIONS	TOP
MD	9,482

FOR COMMISSION USE ONLY

ITD on file YES NO

APPROVED _____ DISAPPROVED _____

2) Reject Codes _____

Were open hole logs run? yes no

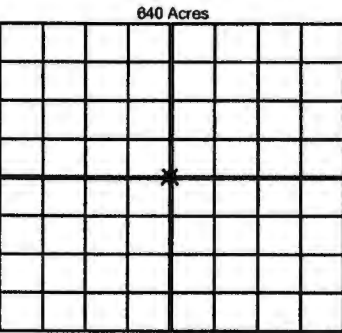
Date Last log was run N/A

Was CO₂ encountered? yes no at what depths? _____

Was H₂S encountered? yes no at what depths? _____

Were unusual drilling circumstances encountered? yes no
If yes, briefly explain below _____

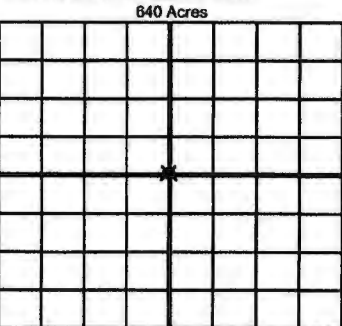
Other remarks: OCC - The irregular Spaced unit created by order 588047 covers the E 1/2 section 8 and W 1/2 sec 9-8N-4W creating a 640 acre unit. Order 698391 creates an 320 acre unit covering the W 1/2 sec 4-8N-4W



If more than three drainholes are proposed, attach a separate sheet indicating the necessary information.

Direction must be stated in degrees azimuth. Please note, the horizontal drainhole and its end point must be located within the boundaries of the lease or spacing unit.

Directional surveys are required for all drainholes and directional wells.



BOTTOM HOLE LOCATION FOR DIRECTIONAL HOLE

SEC	TWP	RGE	COUNTY			
Spot Location	1/4	1/4	1/4	Feet From 1/4 Sec Lines	FSL	FWL
Measured Total Depth	True Vertical Depth		BHL From Lease, Unit, or Property Line:			

BOTTOM HOLE LOCATION FOR HORIZONTAL HOLE: (LATERALS)

LATERAL #1

SEC	TWP	RGE	COUNTY				
9	8N	4W	MCCLAIN				
Spot Location	SW 1/4	SE 1/4	SW 1/4	Feet From 1/4 Sec Lines	FSL	FWL	
Depth of Deviation	9,070	Radius of Turn	779	Direction	178	Total Length	10,132
Measured Total Depth	19,981	True Vertical Depth	9,581	BHL From Lease, Unit, or Property Line:			

173 FEL 357
176 2,248
176 173

LATERAL #2

SEC	TWP	RGE	COUNTY			
Spot Location	1/4	1/4	1/4	Feet From 1/4 Sec Lines	FSL	FWL
Depth of Deviation	Radius of Turn		Direction		Total Length	
Measured Total Depth	True Vertical Depth		BHL From Lease, Unit, or Property Line:			

LATERAL #3

SEC	TWP	RGE	COUNTY			
Spot Location	1/4	1/4	1/4	Feet From 1/4 Sec Lines	FSL	FWL
Depth of Deviation	Radius of Turn		Direction		Total Length	
Measured Total Depth	True Vertical Depth		BHL From Lease, Unit, or Property Line:			

Image with 1002A

TOPOGRAPHIC LAND SURVEYORS

13800 WIRELESS WAY, OKLA. CITY, OKLA. 73134 • LOCAL (405) 843-4847 • OUT OF STATE (800) 654-3219
 Certificate of Authorization No. 1292 LS

McCLAIN

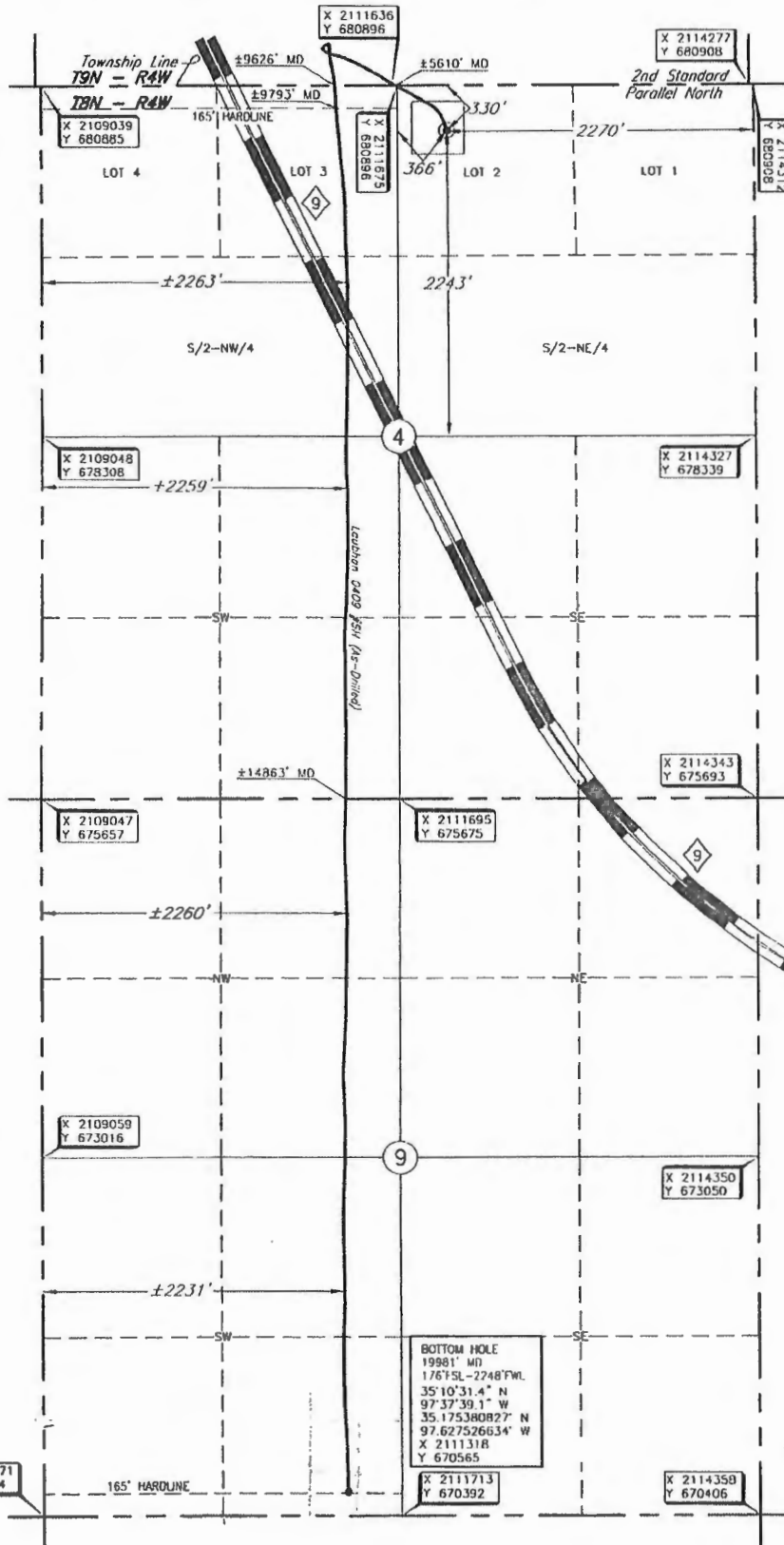
County, Oklahoma

330' ENL - 2270' FEL Section 4 Township 8N Range 4W I.M.

Operator: EOG RESOURCES, INC.
 Lease Name: LAUBHAN 0409
 Topography & Vegetation Conductor pipe on Level Pad
 Well No.: 5H
 ELEVATION: 1260' Gr. on Level Pad

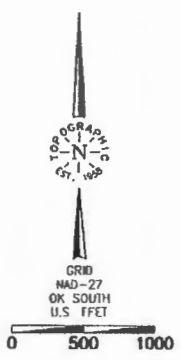
Good Drill Site? Yes
 From North county road.
 Reference Stakes or Alternate Location
 Stakes Set None

Best Accessibility to Location
 Distance & Direction
 from Hwy Jet or Town from the junction of of U.S. Hwy. 62 and St. Hwy 130 in Newcastle, Oklahoma, go South
 ±2 miles, then West ±1 miles, then South ±1 mile to the NE Corner of Section 4, T8N - R4W.



DATUM: NAD-27
 LAT: 35°12'10.3\" N
 LONG: 97°37'29.9\" W
 LAT: 35°20'28.54668\" N
 LONG: 97°52'49.77529\" W
 STATE PLANE
 COORDINATES: (US Feet)
 ZONE: OK SOUTH
 X: 2112043
 Y: 680566

This information was gathered with a GPS receiver with ±1 foot Horiz./Vert. accuracy



Date of Drawing: Jan. 7, 2020
 Project # 124235D Date Staked: July 25, 2019 LC

FINAL AS-DRILLED PLAT

AS-DRILLED INFORMATION
 FURNISHED BY EOG RESOURCES

BHL
 SW 1/4 SW