

Oklahoma Corporation Commission
Oil & Gas Conservation Division
Post Office Box 52000
Oklahoma City, Oklahoma 73152-2000
Rule 165: 10-3-25

Form 1002A

API No.: 35137276060000

Completion Report

Spud Date: January 13, 2021

OTC Prod. Unit No.:

Drilling Finished Date: February 25, 2021

1st Prod Date: April 14, 2021

Completion Date: April 09, 2021

Drill Type: HORIZONTAL HOLE

Min Gas Allowable: Yes

Well Name: BRIAN 27-34 S1H

Purchaser/Measurer: TARGA

Location: STEPHENS 22 1S 4W
NW SW SE SE
360 FSL 1110 FEL of 1/4 SEC
Latitude: 34.449732 Longitude: -97.600816
Derrick Elevation: 0 Ground Elevation: 0

First Sales Date: 04/14/2021

Operator: CHEYENNE PETROLEUM COMPANY 5593

14000 QUAIL SPRINGS PKWY STE 2200
OKLAHOMA CITY, OK 73134-2617

Completion Type	
X	Single Zone
	Multiple Zone
	Commingled

Location Exception	
Order No	
719822	

Increased Density	
Order No	
There are no Increased Density records to display.	

Casing and Cement							
Type	Size	Weight	Grade	Feet	PSI	SAX	Top of CMT
CONDUCTOR	20			85			
SURFACE	13 3/8	54.5	J-55	1535		735	SURFACE
INTERMEDIATE	9 5/8	40	P-110NC	8307		740	5000
PRODUCTION	5 1/2	23	P-110NC	18997		2355	6300

Liner								
Type	Size	Weight	Grade	Length	PSI	SAX	Top Depth	Bottom Depth
There are no Liner records to display.								

Total Depth: 19015

Packer	
Depth	Brand & Type
8714	ASI-X

Plug	
Depth	Plug Type
There are no Plug records to display.	

Initial Test Data

Test Date	Formation	Oil BBL/Day	Oil-Gravity (API)	Gas MCF/Day	Gas-Oil Ratio Cu FT/BBL	Water BBL/Day	Pumpin or Flowing	Initial Shut-In Pressure	Choke Size	Flow Tubing Pressure
Jun 07, 2021	SYCAMORE	644	41	867	1346	2241	FLOWING	520	128/64	179

Completion and Test Data by Producing Formation

Formation Name: SYCAMORE

Code: 352SCMR

Class: OIL

Spacing Orders

Order No	Unit Size
707563	560
707564	640
719821	MULTIUNIT

Perforated Intervals

From	To
8845	18895

Acid Volumes

NONE

Fracture Treatments

540,739 BARRELS WATER, 23,414,310 POUNDS SAND

Formation	Top
SYCAMORE MD	8805
SYCAMORE TVD	8658

Were open hole logs run? No

Date last log run: February 22, 2021

Were unusual drilling circumstances encountered? No

Explanation:

Other Remarks

OCC - SPACING ORDER NUMBER 707563 CREATED AN IRREGULAR 560 ACRE UNIT COMPRISING S/2 NW/4, ALL NE/4, ALL SE/4, ALL SW/4 SEC 27-01S-04W.

Lateral Holes

Sec: 34 TWP: 1S RGE: 4W County: STEPHENS

SW SE SE SE

108 FSL 369 FEL of 1/4 SEC

Depth of Deviation: 8107 Radius of Turn: 425 Direction: 182 Total Length: 10050

Measured Total Depth: 19015 True Vertical Depth: 10242 End Pt. Location From Release, Unit or Property Line: 108

FOR COMMISSION USE ONLY

1146757

Status: Accepted

API NO. 35-137-27606
 OTC PROD. UNIT NO.

Oil and Gas Conservation Division
 P.O. Box 52000
 Oklahoma City, OK 73152-2000
 405-522-0577
 OCCCentralProcessing@OCC.OK.GOV



RECEIVED

AUG 03 2021

Form 1002A Rev. 2020

ORIGINAL
 AMENDED (Reason)

Rule 165:10-3-25

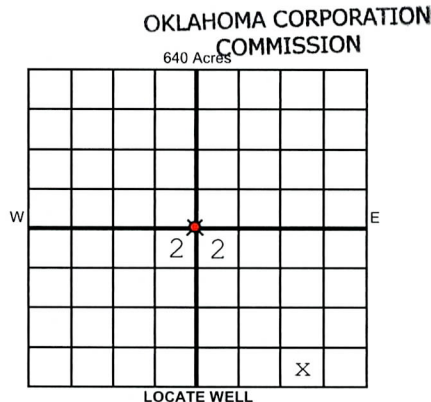
COMPLETION REPORT

TYPE OF DRILLING OPERATION
 STRAIGHT HOLE DIRECTIONAL HOLE HORIZONTAL HOLE
 SERVICE WELL

If directional or horizontal, see reverse for bottom hole location.

COUNTY **Stephens** SEC **22** TWP **1S** RGE **4W**
 LEASE NAME **Brian 27-34** WELL NO. **S1H**
 NW 1/4 SW 1/4 SE 1/4 SE 1/4 FSL 360' FEL 1,110'
 ELEVATION Derrick FL **Ground** Latitude **34.449732** Longitude **-97.600816**
 OPERATOR NAME **Cheyenne Petroleum Company** OTC / OCC OPERATOR NO. **5593**
 ADDRESS **14000 Quail Springs Pkwy, Suite 2200**
 CITY **Oklahoma City** STATE **OK** ZIP **73134-2617**

SPUD DATE **1/13/2021**
 DRLG FINISHED DATE **2/25/2021**
 DATE OF WELL COMPLETION **4/9/2021**
 1st PROD DATE **4/14/2021**
 RECOMP DATE



COMPLETION TYPE
 SINGLE ZONE
 MULTIPLE ZONE Application Date
 COMMINGLED Application Date
 LOCATION EXCEPTION ORDER NO. **710347 719822**
 MULTIUNIT ORDER NO. **740346 719821**
 INCREASED DENSITY ORDER NO. **FO**

CASING & CEMENT (Attach Form 1002C)

TYPE	SIZE	WEIGHT	GRADE	FEET	PSI	SAX	TOP OF CMT
CONDUCTOR	20			85			
SURFACE	13 3/8	54.5	J55	1535		735	Surface
INTERMEDIATE	9 5/8	40	P110NC	8307		740	5000
PRODUCTION	5 1/2	23	P110NC	18997		2355	6300
LINER							

PACKER @ 8714 BRAND & TYPE ASI-X PLUG @ TYPE PLUG @ TYPE TOTAL DEPTH **19,015'**
 PACKER @ BRAND & TYPE PLUG @ TYPE PLUG @ TYPE

COMPLETION & TEST DATA BY PRODUCING FORMATION **35250MR**

FORMATION	SPACING & SPACING ORDER NUMBER	CLASS: Oil, Gas, Dry, Inj, Disp, Comm Disp, Svc	PERFORATED INTERVALS	ACID/VOLUME	FRACTURE TREATMENT (Fluids/Prop Amounts)
Sycamore	Sec 27/560ac 707563 Sec 34/640ac 707564	Oil	18895-8842 8845-18895	0 - none	540, 739 bbls water 23,414,310 lb sand

Reported to FracFocus

Min Gas Allowable (165:10-17-7) OR Oil Allowable (165:10-13-3)
 Purchaser/Measurer **Targa** First Sales Date **4/14/2021**

INITIAL TEST DATA

INITIAL TEST DATE	6/7/2021
OIL-BBL/DAY	644
OIL-GRAVITY (API)	41.41
GAS-MCF/DAY	867
GAS-OIL RATIO CU FT/BBL	1346
WATER-BBL/DAY	2241
PUMPING OR FLOWING	Flowing
INITIAL SHUT-IN PRESSURE	520
CHOKE SIZE	128/64
FLOW TUBING PRESSURE	179

A record of the formations drilled through, and pertinent remarks are presented on the reverse. I declare that I have knowledge of the contents of this report and am authorized by my organization to make this report, which was prepared by me or under my supervision and direction, with the data and facts stated herein to be true, correct, and complete to the best of my knowledge and belief.

Rory Barneche
 SIGNATURE **Rory Barneche, Agent** NAME (PRINT OR TYPE) **(405) 813-3085** PHONE NUMBER
14000 Quail Springs Pkwy, Suite 2200 Oklahoma City OK 73134 ADDRESS CITY STATE ZIP
rbarneche@nicholsenergy.com EMAIL ADDRESS

PLEASE TYPE OR USE BLACK INK ONLY
FORMATION RECORD

Give formation names and tops, if available, or descriptions and thickness of formations drilled through. Show intervals cored or drillstem tested.

LEASE NAME Brian 27-34

WELL NO. S1H

NAMES OF FORMATIONS	TOP
<i>Sycamore</i>	<i>8805 MD 8658 TVD</i>

FOR COMMISSION USE ONLY

ITD on file YES NO

APPROVED _____ DISAPPROVED _____

2) Reject Codes _____

Were open hole logs run? yes no

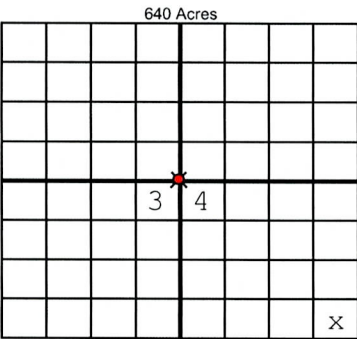
Date Last log was run 2/22/2021

Was CO₂ encountered? yes no at what depths? _____

Was H₂S encountered? yes no at what depths? _____

Were unusual drilling circumstances encountered? yes no
If yes, briefly explain below

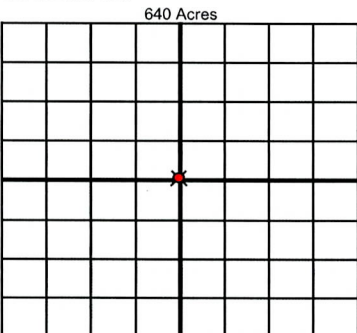
Other remarks: *OCC - spacing order 707563 created an irregular 560 acre unit comprising 1/2 NW/4, all NE/4, all SE/4, all SW/4 Sec 27-15-4W.*



If more than three drainholes are proposed, attach a separate sheet indicating the necessary information.

Direction must be stated in degrees azimuth. Please note, the horizontal drainhole and its end point must be located within the boundaries of the lease or spacing unit.

Directional surveys are required for all drainholes and directional wells



BOTTOM HOLE LOCATION FOR DIRECTIONAL HOLE

SEC	TWP	RGE	COUNTY	Feet From 1/4 Sec Lines		
1/4	1/4	1/4	1/4			
Measured Total Depth		True Vertical Depth		BHL From Lease, Unit, or Property Line:		

BOTTOM HOLE LOCATION FOR HORIZONTAL HOLE: (LATERALS)

LATERAL #1

SEC 34	TWP 1S	RGE 4W	COUNTY Stephens	Feet From 1/4 Sec Lines			FSL <input checked="" type="checkbox"/> 108'	FEL 369'
SW 1/4	SE 1/4	SE 1/4	SE 1/4					
Depth of Deviation 8107		Radius of Turn 425		Direction 182.180		Total Length 10,050'		
Measured Total Depth 19,015'		True Vertical Depth 10,242'		BHL From Lease, Unit, or Property Line: 108' FSL & 369' FEL				

LATERAL #2

SEC	TWP	RGE	COUNTY	Feet From 1/4 Sec Lines			
1/4	1/4	1/4	1/4				
Depth of Deviation		Radius of Turn		Direction		Total Length	
Measured Total Depth		True Vertical Depth		BHL From Lease, Unit, or Property Line:			

LATERAL #3

SEC	TWP	RGE	COUNTY	Feet From 1/4 Sec Lines			
1/4	1/4	1/4	1/4				
Depth of Deviation		Radius of Turn		Direction		Total Length	
Measured Total Depth		True Vertical Depth		BHL From Lease, Unit, or Property Line:			