

Oklahoma Corporation Commission
 Oil & Gas Conservation Division
 Post Office Box 52000
 Oklahoma City, Oklahoma 73152-2000
 Rule 165: 10-3-25

Form 1002A

API No.: 35073267530000

Completion Report

Spud Date: June 08, 2021

OTC Prod. Unit No.: 073-227285-0-0424

Drilling Finished Date: June 19, 2021

1st Prod Date: July 13, 2021

Completion Date: July 11, 2021

Drill Type: HORIZONTAL HOLE

Well Name: LINCOLN SOUTHEAST OSWEGO UNIT 56-3HO

Purchaser/Measurer:

Location: KINGFISHER 21 17N 5W
 SW SW SE SW
 308 FSL 1529 FWL of 1/4 SEC
 Latitude: 35.927701 Longitude: -97.742195
 Derrick Elevation: 0 Ground Elevation: 995

First Sales Date:

Operator: HINKLE OIL & GAS INC 21639

5600 N MAY AVE STE 295
 OKLAHOMA CITY, OK 73112-4275

Completion Type	
X	Single Zone
	Multiple Zone
	Commingled

Location Exception	
Order No	
There are no Location Exception records to display.	

Increased Density	
Order No	
There are no Increased Density records to display.	

Casing and Cement							
Type	Size	Weight	Grade	Feet	PSI	SAX	Top of CMT
CONDUCTOR	20			80			SURFACE
SURFACE	9 5/8	36	LTC	351		135	SURFACE
PRODUCTION	7	26	P-110	6695		230	3779

Liner								
Type	Size	Weight	Grade	Length	PSI	SAX	Top Depth	Bottom Depth
LINER	4 1/2	13.5	P-110	4838	0	425	6275	11113

Total Depth: 11125

Packer	
Depth	Brand & Type
There are no Packer records to display.	

Plug	
Depth	Plug Type
There are no Plug records to display.	

Initial Test Data

Test Date	Formation	Oil BBL/Day	Oil-Gravity (API)	Gas MCF/Day	Gas-Oil Ratio Cu FT/BBL	Water BBL/Day	Pumpin or Flowing	Initial Shut-In Pressure	Choke Size	Flow Tubing Pressure
Jul 19, 2021	OSWEGO	575	47.5	668	1162	2987	PUMPING		OPEN	

Completion and Test Data by Producing Formation

Formation Name: OSWEGO

Code: 404OSWG

Class: OIL

Spacing Orders

Order No	Unit Size
52793	UNIT

Perforated Intervals

From	To
6630	11100

Acid Volumes

197,064 GALLONS 15% HCL, 58,646 BSW

Fracture Treatments

There are no Fracture Treatments records to display.
--

Formation	Top
OSWEGO TVD	6098
OSWEGO MTD	6242

Were open hole logs run? No

Date last log run:

Were unusual drilling circumstances encountered? No

Explanation:

Other Remarks

There are no Other Remarks.

Lateral Holes

Sec: 21 TWP: 17N RGE: 5W County: KINGFISHER

N2 N2 N2 NW

1 FNL 1320 FWL of 1/4 SEC

Depth of Deviation: 5482 Radius of Turn: 1136 Direction: 358 Total Length: 4507

Measured Total Depth: 11125 True Vertical Depth: 6207 End Pt. Location From Release, Unit or Property Line: 1

FOR COMMISSION USE ONLY

1146779

Status: Accepted

API NO. 35-073-26753
 OTC PROD. 013-22285
 UNIT NO. 0-0424

Oil and Gas Conservation Division
 P.O. Box 52000
 Oklahoma City, OK 73152-2000
 405-521-2331
 OCCentralProcessing@OCC.OK.GOV



Form 1002A
 Rev. 2020

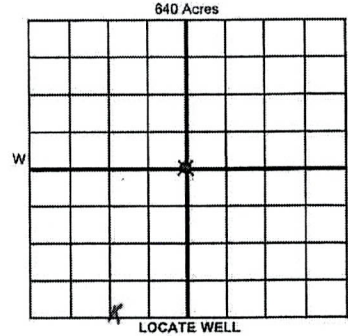
ORIGINAL
 AMENDED (Reason) _____

Rule 165:10-3-25

COMPLETION REPORT

TYPE OF DRILLING OPERATION
 STRAIGHT HOLE DIRECTIONAL HOLE HORIZONTAL HOLE
 SERVICE WELL
 If directional or horizontal, see reverse for bottom hole location.

SPUD DATE 06/08/2021
 DRLG FINISHED DATE 06/19/2021
 DATE OF WELL COMPLETION 7/11/2021
 1st PROD DATE 7/13/2021
 RECOMP DATE _____
 ELEVATION Darrick FL Ground 995' Latitude 35.927701 Longitude -97.742195
 OPERATOR NAME Hinkle Oil & Gas, Inc. OTC/OCC OPERATOR NO. 21639
 ADDRESS 5600 N. May Avenue, Suite 295
 CITY Oklahoma City STATE OK ZIP 73112



COUNTY Kingfisher SEC 21 TWP 17N RGE 05W
 LEASE NAME Lincoln Southeast Oswego Unit WELL NO. 56-3HO
 SW 1/4 SW 1/4 SE 1/4 SW 1/4 FSL 308' FWL 1529'
 OPERATOR NAME Hinkle Oil & Gas, Inc. OTC/OCC OPERATOR NO. 21639
 ADDRESS 5600 N. May Avenue, Suite 295
 CITY Oklahoma City STATE OK ZIP 73112

COMPLETION TYPE

SINGLE ZONE
 MULTIPLE ZONE
 COMMINGLED
 LOCATION EXCEPTION ORDER NO. _____
 MULTUNIT ORDER NO. _____
 INCREASED DENSITY ORDER NO. _____

CASING & CEMENT (Attach Form 1002C)

TYPE	SIZE	WEIGHT	GRADE	FEET	PSI	SAX	TOP OF CMT
CONDUCTOR	20"			80'			Surface
SURFACE	9 5/8"	36#	LTC	351'		135	Surface
INTERMEDIATE							
PRODUCTION	7"	26#	P110	6695'	230	240	3779'
LINER	4 1/2"	13.5#	P110	6275'-11,113'		425	6275'

PACKER @ _____ BRAND & TYPE _____ PLUG @ _____ TYPE _____ PLUG @ _____ TYPE _____ TOTAL DEPTH 11,125'
 PACKER @ _____ BRAND & TYPE _____ PLUG @ _____ TYPE _____ PLUG @ _____ TYPE _____

COMPLETION & TEST DATA BY PRODUCING FORMATION

FORMATION	Oswego					No Fract
SPACING & SPACING ORDER NUMBER	52793 (unit)					
CLASS: Oil, Gas, Dry, Inj, Disp, Comm Disp, Svc	Oil					
PERFORATED INTERVALS	6630'-11,100'					
ACID/VOLUME						
FRACTURE TREATMENT (Fluids/Prop Amounts)	197064 Gal. 15% HCL 58646 BSW					

RECEIVED
 AUG 09 2021
 OKLAHOMA CORPORATION
 COMMISSION

Min Gas Allowable (165:10-17-7) OR Oil Allowable (165:10-13-3) Purchaser/Measurer _____ First Sales Date _____

INITIAL TEST DATA

INITIAL TEST DATE	7/19/2021				
OIL-BBL/DAY	575				
OIL-GRAVITY (API)	47.5				
GAS-MCF/DAY	668				
GAS-OIL RATIO CU FT/BBL	1162				
WATER-BBL/DAY	2987				
PUMPING OR FLOWING	Pumping				
INITIAL SHUT-IN PRESSURE	N/A				
CHOKE SIZE	Open				
FLOW TUBING PRESSURE	N/A				

A record of the formations drilled through, and pertinent remarks are presented on the reverse. I declare that I have knowledge of the contents of this report and am authorized by my organization to make this report, which was prepared by me or under my supervision and direction, with the data and facts stated herein to be true, correct, and complete to the best of my knowledge and belief.

B. A. Hinkle SIGNATURE NAME (PRINT OR TYPE) Bruce A. Hinkle
 5600 N. May Avenue, Suite 295 Oklahoma City OK 73112 ADDRESS CITY STATE ZIP
 08/06/2021 405-848-0924 DATE PHONE NUMBER
 Laura.hinkle@hoagi.com EMAIL ADDRESS

PLEASE TYPE OR USE BLACK INK ONLY
FORMATION RECORD

Give formation names and tops, if available, or descriptions and thickness of formations drilled through. Show intervals cored or drillstem tested.

LEASE NAME Lincoln Southeast Oswego Unit WELL NO. 56-3HO

NAMES OF FORMATIONS	TOP
Oswego TVD	6098'
MTD	6242'

FOR COMMISSION USE ONLY

ITD on file YES NO

APPROVED _____ DISAPPROVED _____

2) Reject Codes _____

Were open hole logs run? yes no

Date Last log was run _____

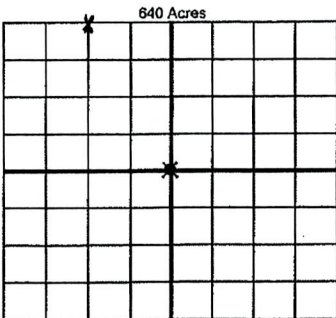
Was CO₂ encountered? yes no at what depths? _____

Was H₂S encountered? yes no at what depths? _____

Were unusual drilling circumstances encountered? yes no

If yes, briefly explain below _____

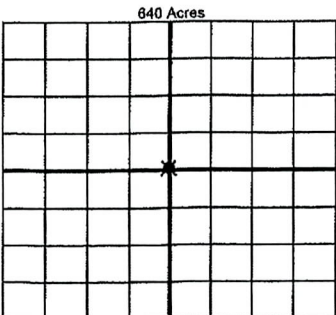
Other remarks: _____



If more than three drainholes are proposed, attach a separate sheet indicating the necessary information.

Direction must be stated in degrees azimuth. Please note, the horizontal drainhole and its end point must be located within the boundaries of the lease or spacing unit.

Directional surveys are required for all drainholes and directional wells



BOTTOM HOLE LOCATION FOR DIRECTIONAL HOLE

SEC	TWP	RGE	COUNTY
1/4	1/4	1/4	1/4
Measured Total Depth		True Vertical Depth	BHL From Lease, Unit, or Property Line:

BOTTOM HOLE LOCATION FOR HORIZONTAL HOLE: (LATERALS)

LATERAL #1

SEC	TWP	RGE	COUNTY
21	17N	05W	Kingfisher
N2	N2	N2	NW
1/4	1/4	1/4	1/4
Depth of Deviation		Radius of Turn	Direction
5482'		1136'	358 North
Measured Total Depth		True Vertical Depth	BHL From Lease, Unit, or Property Line:
11,125'		6207'	1'

LATERAL #2

SEC	TWP	RGE	COUNTY
1/4	1/4	1/4	1/4
Depth of Deviation		Radius of Turn	Direction
Measured Total Depth		True Vertical Depth	BHL From Lease, Unit, or Property Line:

LATERAL #3

SEC	TWP	RGE	COUNTY
1/4	1/4	1/4	1/4
Depth of Deviation		Radius of Turn	Direction
Measured Total Depth		True Vertical Depth	BHL From Lease, Unit, or Property Line: