

Oklahoma Corporation Commission
Oil & Gas Conservation Division
Post Office Box 52000
Oklahoma City, Oklahoma 73152-2000
Rule 165: 10-3-25

Form 1002A

API No.: 35019264300000

Completion Report

Spud Date: February 24, 2021

OTC Prod. Unit No.: 019-109942-0-5383

Drilling Finished Date: March 02, 2021

1st Prod Date: August 05, 2021

Completion Date: July 31, 2021

Drill Type: DIRECTIONAL HOLE

Well Name: SW WILDCAT JIM DEESE UNIT 2-2

Purchaser/Measurer:

Location: CARTER 1 2S 3W
NE NE SE SE
1093 FSL 97 FEL of 1/4 SEC
Derrick Elevation: 1059 Ground Elevation: 1048

First Sales Date:

Operator: MACK ENERGY CO 11739

4700 GAILLARDIA PKWY STE 102
OKLAHOMA CITY, OK 73142-1839

Completion Type	
X	Single Zone
	Multiple Zone
	Commingled

Location Exception	
Order No	
There are no Location Exception records to display.	

Increased Density	
Order No	
There are no Increased Density records to display.	

Casing and Cement							
Type	Size	Weight	Grade	Feet	PSI	SAX	Top of CMT
SURFACE	9 5/8	40	K-55	1310		685	SURFACE
PRODUCTION	7	26	K-55	4265		400	1000

Liner								
Type	Size	Weight	Grade	Length	PSI	SAX	Top Depth	Bottom Depth
There are no Liner records to display.								

Total Depth: 4283

Packer	
Depth	Brand & Type
There are no Packer records to display.	

Plug	
Depth	Plug Type
There are no Plug records to display.	

Initial Test Data										
Test Date	Formation	Oil BBL/Day	Oil-Gravity (API)	Gas MCF/Day	Gas-Oil Ratio Cu FT/BBL	Water BBL/Day	Pumpin or Flowing	Initial Shut-In Pressure	Choke Size	Flow Tubing Pressure
Aug 05, 2021	DEESE	40	22	30	750	120	PUMPING	320		

Completion and Test Data by Producing Formation

Formation Name: DEESE

Code: 404DEESS

Class: OIL

Spacing Orders

Order No	Unit Size
701901	UNIT

Perforated Intervals

From	To
4043	4105

Acid Volumes

There are no Acid Volume records to display.
--

Fracture Treatments

658 BARRELS, 16,355 POUNDS 16/30 SAND IN 1, 2, 3 PUMPING STAGES

Formation Name: DEESE

Code: 404DEESS

Class: OIL

Spacing Orders

Order No	Unit Size
701901	UNIT

Perforated Intervals

From	To
3909	4019

Acid Volumes

There are no Acid Volume records to display.
--

Fracture Treatments

448 BARRELS, 7,631 POUNDS 16/30 SAND IN 1, 2, 3 PUMPING STAGES
--

Formation Name: DEESE

Code: 404DEESS

Class: OIL

Spacing Orders

Order No	Unit Size
701901	UNIT

Perforated Intervals

From	To
3527	3624

Acid Volumes

There are no Acid Volume records to display.
--

Fracture Treatments

534 BARRELS, 11,207 POUNDS 16/30 SAND IN 1, 2, 3 PUMPING STAGES

Formation Name: DEESE

Code: 404DEESS

Class: OIL

Spacing Orders

Order No	Unit Size
701901	UNIT

Perforated Intervals

From	To
3286	3473

Acid Volumes

There are no Acid Volume records to display.
--

Fracture Treatments

335 BARRELS, 5,434 POUNDS 16/30 SAND IN 1, 2, 3 PUMPING STAGES
--

Formation	Top
CISCO	1518
HOXBAR GROUP	2167
COUNTY LINE LIME	2496
COUNTY LINE SAND	2583
TATUMS	2793

Were open hole logs run? No

Date last log run: March 01, 2021

Were unusual drilling circumstances encountered? No

Explanation:

DEESE GROUP	3334
EASON	3498
TUSSY (3,526') TUSSY LIME	3559
CARPENTER	3693
MORRIS	3865

Other Remarks
THIS WELL IS PART OF THE NEWLY FORMED SW WILDCAT JIM DEESE UNIT.

Bottom Holes
Sec: 1 TWP: 2S RGE: 3W County: CARTER SW SE NE SE 1329 FSL 331 FEL of 1/4 SEC Depth of Deviation: 0 Radius of Turn: 0 Direction: 0 Total Length: 0 Measured Total Depth: 4283 True Vertical Depth: 4262 End Pt. Location From Release, Unit or Property Line: 675

FOR COMMISSION USE ONLY
<div>Status: Accepted</div> <div>1146814</div>

RECEIVED

Form 1002A
Rev. 2020

AUG 25 2021

API NO. 35-019-26430
OTC PROD. 016-109942-0-5383
UNIT NO. 016-109942-0Oil and Gas Conservation Division
P.O. Box 52000
Oklahoma City, OK 73152-2000
405-521-2331
OCCCentralProcessing@OCC.OK.GOVOKLAHOMA
Corporation
CommissionOKLAHOMA CORPORATION
COMMISSIONORIGINAL
AMENDED (Reason) 5383

Rule 165:10-3-25

COMPLETION REPORT

TYPE OF DRILLING OPERATION

☐ STRAIGHT HOLE ☒ DIRECTIONAL HOLE ☐ HORIZONTAL HOLE
☐ SERVICE WELL

If directional or horizontal, see reverse for bottom hole location.

COUNTY Carter SEC 1 TWP 2S RGE 3W

LEASE NAME SW WJDU Jim Deese Unit

NE 1/4 NE 1/4 SE 1/4 SE 1/4 FSL 1093' FEL 97'

ELEVATION 1059' Ground 1048' Latitude Longitude

OPERATOR NAME Mack Energy Co. OTC / OCC OPERATOR NO. 11739

ADDRESS 4700 Gaillardia Pkwy, Ste 102

CITY Duncan STATE OK ZIP 73142

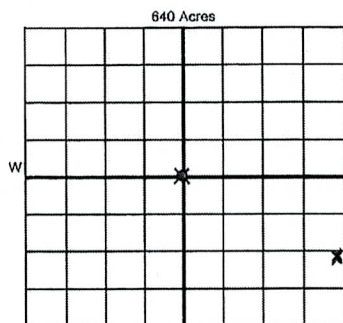
SPUD DATE 2-24-21

DRLG FINISHED DATE 3-2-21

DATE OF WELL COMPLETION 7-31-21

1st PROD DATE 8-5-21

RECOMP DATE



LOCATE WELL

COMPLETION TYPE

☒ SINGLE ZONE
☐ MULTIPLE ZONE
Application Date
☐ COMMINGLED
Application Date
LOCATION EXCEPTION
ORDER NO.
MULTIUNIT ORDER NO.
INCREASED DENSITY
ORDER NO.

CASING & CEMENT (Attach Form 1002C)

TYPE	SIZE	WEIGHT	GRADE	FEET	PSI	SAX	TOP OF CMT
CONDUCTOR							
SURFACE	9 5/8"	40#	K-55	1310'		685	Surface
INTERMEDIATE							
PRODUCTION	7"	26#	K-55	4265'		400	1000'
LINER							

PACKER @ BRAND & TYPE

PLUG @

TYPE

PLUG @

TYPE

TOTAL

PACKER @ BRAND & TYPE

PLUG @

TYPE

PLUG @

TYPE

DEPTH

4283

COMPLETION & TEST DATA BY PRODUCING FORMATION

FORMATION	(L. Morris)	(L/U Morris)	Carpenter	Tussy/Fusulina	Deese on all
SPACING & SPACING ORDER NUMBER	10/701901	10/701901	10/701901	10/701901	unit on all
CLASS: Oil, Gas, Dry, Inj, Disp, Comm Disp, Svc	Oil	Oil	Oil	Oil	
PERFORATED INTERVALS	4043-4105'	3909-4019'	3527-3624'	3286-3473'	
ACID/VOLUME					
FRACTURE TREATMENT (Fluids/Prop Amounts)	658 bbls, 16355# 16/30 sd in 1,2,3 ppg stgs	448 bbls, 7631# 16/30 sd in 1,2,3 ppg stgs	534 bbls, 11207# 16/30 sd in 1,2,3 ppg stgs	335 bbls, 5434# 16/30 sd in 1,2,3 ppg stgs	

Min Gas Allowable (165:10-17-7)

Purchaser/Measurer



OR

First Sales Date

INITIAL TEST DATA

Oil Allowable (165:10-13-3)

INITIAL TEST DATE	8-5-21				
OIL-BBL/DAY	40				
OIL-GRAVITY (API)	22				
GAS-MCF/DAY	30				
GAS-OIL RATIO CU FT/BBL	750				
WATER-BBL/DAY	120				
PUMPING OR FLOWING	Pumping				
INITIAL SHUT-IN PRESSURE	320 psig				
CHOKE SIZE					
FLOW TUBING PRESSURE					

A record of the formations drilled through, and pertinent remarks are presented on the reverse. I declare that I have knowledge of the contents of this report and am authorized by my organization to make this report, which was prepared by me or under my supervision and direction, with the data and facts stated herein to be true, correct, and complete to the best of my knowledge and belief.

Dinah Mayes

SIGNATURE

Dinah Mayes, Eng. Tech.

NAME (PRINT OR TYPE)

8-20-21

DATE

580-856-3705

PHONE NUMBER

3730 Samedan Rd

ADDRESS

Ratliff City

CITY

OK

STATE

73481

ZIP

dmayes@mackenergy.com

EMAIL ADDRESS

Monitor
Report to Flow Focus

PLEASE TYPE OR USE BLACK INK ONLY
FORMATION RECORD

Give formation names and tops, if available, or descriptions and thickness of formations drilled through. Show intervals cored or drillstem tested.

NAMES OF FORMATIONS	TOP
Cisco	1518'
Hoxbar Group	2167'
County Line Lime	2496'
County Line Sand	2583'
Tatums	2793'
Deese Group	3334'
Eason	3498'
Tussy (3526') Tussy Lime	3559'
Carpenter	3693'
Morris	3865'

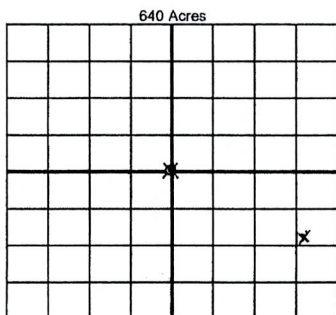
LEASE NAME SW WJDU

WELL NO. 2-2

FOR COMMISSION USE ONLY		
ITD on file	<input type="checkbox"/> YES <input type="checkbox"/> NO	
APPROVED	DISAPPROVED	2) Reject Codes
<div></div> <div></div> <div></div> <div></div> <div></div>		

Were open hole logs run?	<input type="radio"/> yes <input checked="" type="radio"/> no
Date last log was run	<u>3-1-21</u>
Was CO ₂ encountered?	<input type="radio"/> yes <input checked="" type="radio"/> no at what depths? _____
Was H ₂ S encountered?	<input type="radio"/> yes <input checked="" type="radio"/> no at what depths? _____
Were unusual drilling circumstances encountered?	<input type="radio"/> yes <input checked="" type="radio"/> no
If yes, briefly explain below	

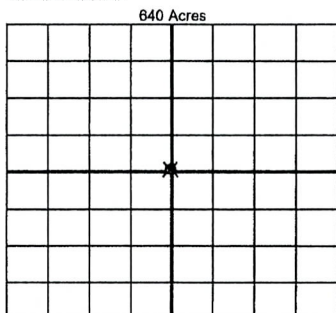
Other remarks: This well is part of the newly formed SW WJDU SW Wildcat Jim Deese Unit



If more than three drainholes are proposed, attach a separate sheet indicating the necessary information.

Direction must be stated in degrees azimuth. Please note, the horizontal drainhole and its end point must be located within the boundaries of the lease or spacing unit.

Directional surveys are required for all drainholes and directional wells



BOTTOM HOLE LOCATION FOR DIRECTIONAL HOLE

SEC	TWP	RGE	COUNTY		
1	2S	3W		Carter	1326
SW 1/4	SE 1/4	NE 1/4	SE 1/4	Feet From 1/4 Sec Lines	FSL <input checked="" type="checkbox"/> 4336' FEL <input checked="" type="checkbox"/> 349' 331
Measured Total Depth		True Vertical Depth		BHL From Lease, Unit, or Property Line:	
4283'		4262'		675'	

BOTTOM HOLE LOCATION FOR HORIZONTAL HOLE: (LATERALS)

LATERAL #1					
SEC	TWP	RGE	COUNTY		
1/4	1/4	1/4	1/4	Feet From 1/4 Sec Lines	
Depth of Deviation		Radius of Turn		Direction	Total Length
Measured Total Depth		True Vertical Depth		BHL From Lease, Unit, or Property Line:	

LATERAL #2					
SEC	TWP	RGE	COUNTY		
1/4	1/4	1/4	1/4	Feet From 1/4 Sec Lines	
Depth of Deviation		Radius of Turn		Direction	Total Length
Measured Total Depth		True Vertical Depth		BHL From Lease, Unit, or Property Line:	

LATERAL #3					
SEC	TWP	RGE	COUNTY		
1/4	1/4	1/4	1/4	Feet From 1/4 Sec Lines	
Depth of Deviation		Radius of Turn		Direction	Total Length
Measured Total Depth		True Vertical Depth		BHL From Lease, Unit, or Property Line:	

RECEIVED

Form 1002A
Rev. 2020

AUG 25 2021

API NO. 35-019-26430
OTC PROD. 016-109942-0-5383
UNIT NO. 614-109942-0Oil and Gas Conservation Division
P.O. Box 52000
Oklahoma City, OK 73152-2000
405-521-2331
OCCCentralProcessing@OCC.OK.GOVOKLAHOMA
Corporation
CommissionORIGINAL
AMENDED (Reason) 5383

Rule 165:10-3-25

COMPLETION REPORT

OKLAHOMA CORPORATION
COMMISSION

TYPE OF DRILLING OPERATION

☐ STRAIGHT HOLE ☒ DIRECTIONAL HOLE ☐ HORIZONTAL HOLE
☐ SERVICE WELL

If directional or horizontal, see reverse for bottom hole location.

COUNTY Carter SEC 1 TWP 2S RGE 3W

LEASE NAME SW WJDU Jim Deese Unit WELL NO. 2-2

NE 1/4 NE 1/4 SE 1/4 SE 1/4 FSL 1093' FEL 97'

ELEVATION Derrick FL 1059' Ground 1048' Latitude Longitude

OPERATOR NAME Mack Energy Co. OTC / OCC OPERATOR NO. 11739

ADDRESS 4700 Gaillardia Pkwy, Ste 102

CITY Duncan STATE OK ZIP 73142

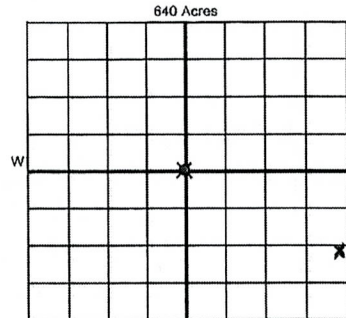
SPUD DATE 2-24-21

DRLG FINISHED DATE 3-2-21

DATE OF WELL COMPLETION 7-31-21

1st PROD DATE 8-5-21

RECOMP DATE



LOCATE WELL

COMPLETION TYPE

☒ SINGLE ZONE
☐ MULTIPLE ZONE
Application Date
☐ COMINGLED
Application Date
LOCATION EXCEPTION ORDER NO.
MULTIUNIT ORDER NO.
INCREASED DENSITY ORDER NO.

CASING & CEMENT (Attach Form 1002C)

TYPE	SIZE	WEIGHT	GRADE	FEET	PSI	SAX	TOP OF CMT
CONDUCTOR							
SURFACE	9 5/8"	40#	K-55	1310'		685	Surface
INTERMEDIATE							
PRODUCTION	7"	26#	K-55	4265'		400	1000'
LINER							

PACKER @ BRAND & TYPE

PLUG @

TYPE

PLUG @

TYPE

TOTAL

PACKER @ BRAND & TYPE

PLUG @

TYPE

PLUG @

TYPE

DEPTH 4283

COMPLETION & TEST DATA BY PRODUCING FORMATION

FORMATION	(L. Morris)	L/U Morris	Carpenter	Fussy/Fusulina	Deese on all
SPACING & SPACING ORDER NUMBER	10/701901	10/701901	10/701901	10/701901	unit on all
CLASS: Oil, Gas, Dry, Inj, Disp, Comm Disp, Svc	Oil	Oil	Oil	Oil	
PERFORATED INTERVALS	4043-4105'	3909-4019'	3527-3624'	3286-3473'	
ACID/VOLUME					
FRACTURE TREATMENT (Fluids/Prop Amounts)	658 bbls, 16355# 16/30 sd in 1,2,3 ppg stgs	448 bbls, 7631# 16/30 sd in 1,2,3 ppg stgs	534 bbls, 11207# 16/30 sd in 1,2,3 ppg stgs	335 bbls, 5434# 16/30 sd in 1,2,3 ppg stgs	

Min Gas Allowable (165:10-17-7)

OR

Oil Allowable (165:10-13-3)

Purchaser/Measurer

First Sales Date

INITIAL TEST DATA

INITIAL TEST DATE	8-5-21				
OIL-BBL/DAY	40				
OIL-GRAVITY (API)	22				
GAS-MCF/DAY	30				
GAS-OIL RATIO CU FT/BBL	750				
WATER-BBL/DAY	120				
PUMPING OR FLOWING	Pumping				
INITIAL SHUT-IN PRESSURE	320 psig				
CHOKE SIZE					
FLOW TUBING PRESSURE					

A record of the formations drilled through, and pertinent remarks are presented on the reverse. I declare that I have knowledge of the contents of this report and am authorized by my organization to make this report, which was prepared by me or under my supervision and direction, with the data and facts stated herein to be true, correct, and complete to the best of my knowledge and belief.

Dinah Mayes

SIGNATURE

Dinah Mayes, Eng. Tech.

NAME (PRINT OR TYPE)

8-20-21 580-856-3705

DATE PHONE NUMBER

3730 Samedan Rd

Ratliff City

OK 73481

dmayes@mackenergy.com

ADDRESS

CITY

STATE

ZIP

EMAIL ADDRESS

Monitor
Report to Flow Focus

PLEASE TYPE OR USE BLACK INK ONLY
FORMATION RECORD

Give formation names and tops, if available, or descriptions and thickness of formations drilled through. Show intervals cored or drillstem tested.

NAMES OF FORMATIONS	TOP
Cisco	1518'
Hoxbar Group	2167'
County Line Lime	2496'
County Line Sand	2583'
Tatums	2793'
Deese Group	3334'
Eason	3498'
Tussy (3526') Tussy Lime	3559'
Carpenter	3693'
Morris	3865'

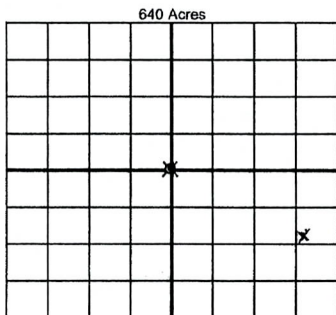
LEASE NAME SW WJDU

WELL NO. 2-2

FOR COMMISSION USE ONLY		
ITD on file	<input type="checkbox"/> YES	<input type="checkbox"/> NO
APPROVED	DISAPPROVED	2) Reject Codes
<div></div> <div></div> <div></div> <div></div> <div></div>		

Were open hole logs run?	<input type="radio"/> yes	<input checked="" type="radio"/> no
Date Last log was run	3-1-21	
Was CO ₂ encountered?	<input type="radio"/> yes	<input checked="" type="radio"/> no at what depths?
Was H ₂ S encountered?	<input type="radio"/> yes	<input checked="" type="radio"/> no at what depths?
Were unusual drilling circumstances encountered?	<input type="radio"/> yes <input checked="" type="radio"/> no	
If yes, briefly explain below		

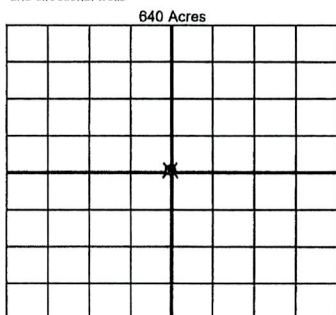
Other remarks: This well is part of the newly formed SW WJDU SW Wildcat 5m Deese Unit



If more than three drainholes are proposed, attach a separate sheet indicating the necessary information.

Direction must be stated in degrees azimuth. Please note, the horizontal drainhole and its end point must be located within the boundaries of the lease or spacing unit.

Directional surveys are required for all drainholes and directional wells



BOTTOM HOLE LOCATION FOR DIRECTIONAL HOLE

SEC	TWP	RGE	COUNTY		
1	2S	3W		Carter	1326
SW 1/4	SE 1/4	NE 1/4	SE 1/4	Feet From 1/4 Sec Lines	FSL <input checked="" type="checkbox"/> 1336' FEL <input checked="" type="checkbox"/> 349' 331
Measured Total Depth		True Vertical Depth		BHL From Lease, Unit, or Property Line:	
4283'		4262'		675'	

BOTTOM HOLE LOCATION FOR HORIZONTAL HOLE: (LATERALS)

LATERAL #1					
SEC	TWP	RGE	COUNTY		
1/4	1/4	1/4	1/4	Feet From 1/4 Sec Lines	
Depth of Deviation		Radius of Turn		Direction	Total Length
Measured Total Depth		True Vertical Depth		BHL From Lease, Unit, or Property Line:	

LATERAL #2					
SEC	TWP	RGE	COUNTY		
1/4	1/4	1/4	1/4	Feet From 1/4 Sec Lines	
Depth of Deviation		Radius of Turn		Direction	Total Length
Measured Total Depth		True Vertical Depth		BHL From Lease, Unit, or Property Line:	

LATERAL #3					
SEC	TWP	RGE	COUNTY		
1/4	1/4	1/4	1/4	Feet From 1/4 Sec Lines	
Depth of Deviation		Radius of Turn		Direction	Total Length
Measured Total Depth		True Vertical Depth		BHL From Lease, Unit, or Property Line:	