

Oklahoma Corporation Commission
Oil & Gas Conservation Division
Post Office Box 52000
Oklahoma City, Oklahoma 73152-2000
Rule 165: 10-3-25

Form 1002A

API No.: 35109225050000

Completion Report

Spud Date: June 21, 2021

OTC Prod. Unit No.:

Drilling Finished Date: July 04, 2021

1st Prod Date: August 16, 2021

Completion Date: August 05, 2021

Drill Type: DIRECTIONAL HOLE

Min Gas Allowable: Yes

Well Name: SALSMAN 2

Purchaser/Measurer: OKLAHOMA GAS
GATHERING

First Sales Date: 08/16/2021

Location: OKLAHOMA 32 11N 2W
NE SE NW SW
1793 FSL 1193 FWL of 1/4 SEC
Latitude: 35.382141 Longitude: -97.436902
Derrick Elevation: 1290 Ground Elevation: 1272

Operator: STEPHENS & JOHNSON OPERATING CO 19113
PO BOX 2249
811 6TH ST STE 300
WICHITA FALLS, TX 76307-2249

Completion Type	
X	Single Zone
	Multiple Zone
	Commingled

Location Exception
Order No
720111

Increased Density
Order No
There are no Increased Density records to display.

Casing and Cement							
Type	Size	Weight	Grade	Feet	PSI	SAX	Top of CMT
CONDUCTOR	16	40	J-55	80		8	SURFACE
SURFACE	8 5/8	24	J-55	1136		650	SURFACE
PRODUCTION	5 1/2	17	N-80	7159		1200	1568

Liner								
Type	Size	Weight	Grade	Length	PSI	SAX	Top Depth	Bottom Depth
There are no Liner records to display.								

Total Depth: 7175

Packer	
Depth	Brand & Type
6798	ARROW

Plug	
Depth	Plug Type
There are no Plug records to display.	

Initial Test Data

Test Date	Formation	Oil BBL/Day	Oil-Gravity (API)	Gas MCF/Day	Gas-Oil Ratio Cu FT/BBL	Water BBL/Day	Pumpin or Flowing	Initial Shut-In Pressure	Choke Size	Flow Tubing Pressure
Aug 20, 2021	MCLISH	2	42	970	485000	1	FLOWING	1020	16/64	840

Completion and Test Data by Producing Formation

Formation Name: MCLISH		Code: 202MCLS		Class: GAS	
Spacing Orders		Perforated Intervals			
Order No	Unit Size	From	To		
359606	160	6818	6832		
Acid Volumes		Fracture Treatments			
NONE		NONE			

Formation	Top
PRUE	6448
WILCOX	6578
TULIP CREEK	6690
MCLISH	6810
OIL CREEK	6972

Were open hole logs run? No
 Date last log run:
 Were unusual drilling circumstances encountered? No
 Explanation:

Other Remarks
UNABLE TO RUN OPEN HOLE LOGS DUE TO WELL BORE CONDITIONS. CEMENTED CASING WITH 350 SACKS CLASS H ON FIRST STAGE DV TOOL SET @ 4,980'. CEMENTED SECOND STAGE WITH 750 SACKS CLASS H. LAID DOWN DIRECTIONAL TOOLS @ 6,530' BEFORE DRILLING WILCOX SAND DUE TO POSSIBLE LOSS CIRCULATION PROBLEMS. RAN SCIENTIFIC GYRO FOR DIRECTIONAL INFORMATION.

Bottom Holes
Sec: 32 TWP: 11N RGE: 2W County: OKLAHOMA NE SW SE NW 595 FSL 1813 FWL of 1/4 SEC Depth of Deviation: 0 Radius of Turn: 0 Direction: 0 Total Length: 0 Measured Total Depth: 7175 True Vertical Depth: 6945 End Pt. Location From Release, Unit or Property Line: 595

FOR COMMISSION USE ONLY
<div>Status: Accepted</div> <div>1146839</div>

API NO. 35-109-22505
OTC PROD.
UNIT NO.

Oil and Gas Conservation Division
P.O. Box 52000
Oklahoma City, OK 73152-2000
405-522-0577
OCCentralProcessing@OCC.OK.GOV



OKLAHOMA
Corporation
Commission

Form 1002A
Rev. 2020

ORIGINAL
AMENDED (Reason)

Rule 165:10-3-25

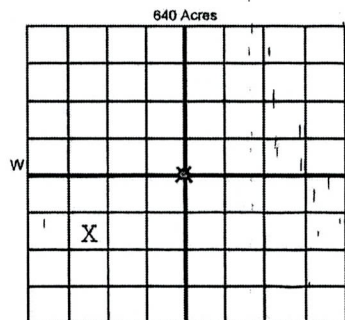
COMPLETION REPORT

TYPE OF DRILLING OPERATION

☐ STRAIGHT HOLE ☒ DIRECTIONAL HOLE ☐ HORIZONTAL HOLE
☐ SERVICE WELL

If directional or horizontal, see reverse for bottom hole location.

COUNTY	OKLAHOMA	SEC	32	TWP	11N	RGE	2W	SPUD DATE	6-21-21
LEASE NAME	SALSMAN			WELL NO.	2	DATE OF WELL COMPLETION	8-5-21	DRLG FINISHED DATE	7-4-21
NE 1/4 SE 1/4 NW 1/4 SW 1/4	FSL 1793 PWA 1193			RECOMP DATE					
ELEVATION	1290	Ground	1272	Latitude	35.382141	Longitude	-97.436902	1st PROD DATE	8-16-21
OPERATOR NAME	STEPHENS & JOHNSON OPERATING CO				OTC / OCC OPERATOR NO.	19113-0			
ADDRESS	P O BOX 2249								
CITY	WICHITA FALLS			STATE	TX	ZIP	76307		



LOCATE WELL

COMPLETION TYPE

<input checked="" type="radio"/> SINGLE ZONE	
<input type="radio"/> MULTIPLE ZONE	
<input type="radio"/> COMMINGLED	
LOCATION EXCEPTION ORDER NO.	720111 FO
MULTIUNIT ORDER NO.	
INCREASED DENSITY ORDER NO.	

CASING & CEMENT (Attach Form 1002C)

TYPE	SIZE	WEIGHT	GRADE	FEET	PSI	SAX	TOP OF CMT
CONDUCTOR	16"	40	J-55	80'		8 YD	SURF
SURFACE	8 5/8"	24	J-55	1136'	650	600	SURF
INTERMEDIATE							
PRODUCTION	5 1/2"	17	N-80	7159'		1100	1568'
LINER						1200	

PACKER @ 8798' BRAND & TYPE ARROW PLUG @ TYPE PLUG @ TYPE TOTAL DEPTH 7175

COMPLETION & TEST DATA BY PRODUCING FORMATION

FORMATION	McClish				No Frac
SPACING & SPACING	359606 (100)				
ORDER NUMBER					
CLASS: Oil, Gas, Dry, Int, Disp, Comm Disp, Svc	Oil Gas per 60R				
PERFORATED INTERVALS	6818-32'				
ACID/VOLUME	none				
FRACTURE TREATMENT (Fluids/Prop Amounts)	none				

RECEIVED

AUG 27 2021

OKLAHOMA CORPORATION
COMMISSION

Min Gas Allowable (165:10-17.7)



OR

Oil Allowable (165:10-13-3)

Purchaser/Measurer

First Sales Date

OKLAHOMA GAS GATHERING

8/16/21

INITIAL TEST DATA

INITIAL TEST DATE	8/20/21				
OIL-BBL/DAY	2				
OIL-GRAVITY (API)	42				
GAS-MCF/DAY	970				
GAS-OIL RATIO CU FT/BBL	485000				
WATER-BBL/DAY	1				
PUMPING OR FLOWING	FLOWING				
INITIAL SHUT-IN PRESSURE	1020				
CHOKE SIZE	16/64				
FLOW TUBING PRESSURE	840				

A record of the formations drilled through and pertinent remarks are presented on the reverse. I declare that I have knowledge of the contents of this report and am authorized by my organization to make this report, which was prepared by me or under my supervision and direction, with the data and facts stated herein to be true, correct, and complete to the best of my knowledge and belief.

SIGNATURE	BOB GILMORE	DATE	8/20/21	PHONE NUMBER	940-723-2166
P O Box 2249	Wichita Falls TX 76307	bgilmore@sjoc.net			
ADDRESS	CITY	STATE	ZIP	EMAIL ADDRESS	

PLEASE TYPE OR USE BLACK INK ONLY
FORMATION RECORD

Give formation names and tops, if available, or descriptions and thickness of formations drilled through. Show intervals cored or drillstem tested.

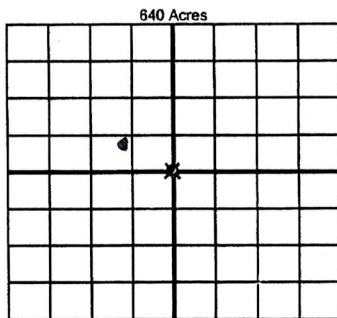
NAMES OF FORMATIONS	TOP
PRUE	6448
WILCOX	6578
TULIP CREEK	6690
McCLISH	6810
OIL CREK	6972

LEASE NAME SALSMAN WELL NO. 2

FOR COMMISSION USE ONLY	
ITD on file <input type="checkbox"/> YES <input type="checkbox"/> NO	
APPROVED <input type="checkbox"/> DISAPPROVED <input type="checkbox"/>	2) Reject Codes

Were open hole logs run?	<input type="radio"/> yes <input checked="" type="radio"/> no
Date Last log was run	
Was CO ₂ encountered?	<input type="radio"/> yes <input checked="" type="radio"/> no at what depths?
Was H ₂ S encountered?	<input type="radio"/> yes <input checked="" type="radio"/> no at what depths?
Were unusual drilling circumstances encountered?	<input type="radio"/> yes <input checked="" type="radio"/> no
If yes, briefly explain below	

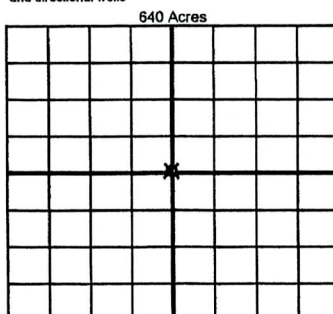
Other remarks: Unable to run open hole logs due to well bore conditions. Cemented csg with 350 sx class H on 1st stage
DV Tool set @ 4980', cemented 2nd stage with 750 sx class H. Laid down directional tools @ 6530' before drilling Wilcox Sd
due to possible loss circulation problems. Ran Scientific gyro for directional information.



If more than three drainholes are proposed, attach a separate sheet indicating the necessary information.

Direction must be stated in degrees azimuth.
Please note, the horizontal drainhole and its end point must be located within the boundaries of the lease or spacing unit.

Directional surveys are required for all drainholes and directional wells



BOTTOM HOLE LOCATION FOR DIRECTIONAL HOLE

SEC 32	TWP 11N	RGE 2W	COUNTY OKLAHOMA
W2NE 1/4 SE SW 1/4 SE 1/4 NW 1/4		Feet From 1/4 Sec Lines	FSL 595 FWL 1813
Measured Total Depth 7175		True Vertical Depth 6945	BHL From Lease, Unit, or Property Line: 595'

BOTTOM HOLE LOCATION FOR HORIZONTAL HOLE: (LATERALS)

LATERAL #1			
SEC	TWP	RGE	COUNTY
1/4	1/4	1/4	1/4
Feet From 1/4 Sec Lines			
Depth of Deviation	Radius of Turn	Direction	Total Length
Measured Total Depth	True Vertical Depth	BHL From Lease, Unit, or Property Line:	

LATERAL #2			
SEC	TWP	RGE	COUNTY
1/4	1/4	1/4	1/4
Feet From 1/4 Sec Lines			
Depth of Deviation	Radius of Turn	Direction	Total Length
Measured Total Depth	True Vertical Depth	BHL From Lease, Unit, or Property Line:	

LATERAL #3			
SEC	TWP	RGE	COUNTY
1/4	1/4	1/4	1/4
Feet From 1/4 Sec Lines			
Depth of Deviation	Radius of Turn	Direction	Total Length
Measured Total Depth	True Vertical Depth	BHL From Lease, Unit, or Property Line:	

API NO. 35-109-22505
OTC PROD. UNIT NO.

Oil and Gas Conservation Division
P.O. Box 52000
Oklahoma City, OK 73152-2000
405-522-0577
OCCCentralProcessing@OCC.OK.GOV



OKLAHOMA
Corporation
Commission

Form 1002A
Rev. 2020

ORIGINAL
AMENDED (Reason)

Rule 165:10-3-25

COMPLETION REPORT

TYPE OF DRILLING OPERATION

☐ STRAIGHT HOLE ☒ DIRECTIONAL HOLE ☐ HORIZONTAL HOLE
☐ SERVICE WELL

If directional or horizontal, see reverse for bottom hole location.

COUNTY OKLAHOMA SEC 32 TWP 11N RGE 2W
LEASE NAME SALSMAN WELL NO. 2
NE 1/4 SE 1/4 NW 1/4 SW 1/4 PSL 1793 PVA 1193
ELEVATION 1290 Ground 1272 Latitude 35.382141 Longitude -97.436902
OPERATOR NAME STEPHENS & JOHNSON OPERATING CO OTC / OCC OPERATOR NO. 19113-0
ADDRESS P O BOX 2249
CITY WICHITA FALLS STATE TX ZIP 76307

SPUD DATE 6-21-21
ORLG FINISHED DATE 7-4-21
DATE OF WELL COMPLETION 8-5-21
1st PROD DATE 8-16-21
RECOMP DATE

640 Acres
W E
X
LOCATE WELL

COMPLETION TYPE

☒ SINGLE ZONE
☐ MULTIPLE ZONE
Application Date
☐ COMMINGLED
Application Date
LOCATION EXCEPTION ORDER NO. 720111 FO
MULTIUNIT ORDER NO.
INCREASED DENSITY ORDER NO.

CASING & CEMENT (Attach Form 1002C)

TYPE	SIZE	WEIGHT	GRADE	FEET	PSI	SAX	TOP OF CMT
CONDUCTOR	16"	40	J-55	80'		8 YD	SURF
SURFACE	8 5/8"	24	J-55	1136'	650	800	SURF
INTERMEDIATE							
PRODUCTION	5 1/2"	17	N-80	7159'		1100	1568'
LINER						1200	

PACKER @ 6798' BRAND & TYPE ARROW PLUG @ TYPE PLUG @ TYPE
PACKER @ BRAND & TYPE PLUG @ TYPE PLUG @ TYPE
TOTAL DEPTH 7175

COMPLETION & TEST DATA BY PRODUCING FORMATION

FORMATION McClish
SPACING & SPACING ORDER NUMBER 359606 (100)
CLASS: Oil, Gas, Dry, Intj, Disp, Comm Disp, Svc
PERFORATED INTERVALS 6818-32'
ACID/VOLUME none
FRACTURE TREATMENT (Fluids/Prop Amounts) none
No Frac
RECEIVED
AUG 27 2021
OKLAHOMA CORPORATION COMMISSION

Min Gas Allowable (165:10-17.7)

☒

OR

Oil Allowable (165:10-13-3)

Purchaser/Measuror

First Sales Date

OKLAHOMA GAS GATHERING

8/16/21

INITIAL TEST DATA

INITIAL TEST DATE	8/20/21
OIL-BBL/DAY	2
OIL-GRAVITY (API)	42
GAS-MCF/DAY	970
GAS-OIL RATIO CU FT/BBL	485000
WATER-BBL/DAY	1
PUMPING OR FLOWING	FLOWING
INITIAL SHUT-IN PRESSURE	1020
CHOKE SIZE	16/64
FLOW TUBING PRESSURE	840

A record of the formations drilled through and pertinent remarks are presented on the reverse. I declare that I have knowledge of the contents of this report and am authorized by my organization to make this report, which was prepared by me or under my supervision and direction, with the data and facts stated herein to be true, correct, and complete to the best of my knowledge and belief.

SIGNATURE BOB GILMORE
P O Box 2249 Wichita Falls TX 76307
ADDRESS CITY STATE ZIP
DATE 8/20/21
PHONE NUMBER 940-723-2166
EMAIL ADDRESS bgilmore@sjoc.net

PLEASE TYPE OR USE BLACK INK ONLY
FORMATION RECORD

Give formation names and tops, if available, or descriptions and thickness of formations drilled through. Show intervals cored or drillstem tested.

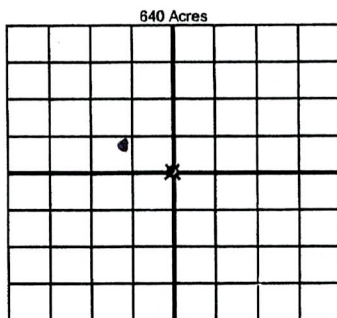
NAMES OF FORMATIONS	TOP
PRUE	6448
WILCOX	6578
TULIP CREEK	6690
McCLISH	6810
OIL CREK	6972

LEASE NAME SALSMAN WELL NO. 2

FOR COMMISSION USE ONLY	
ITD on file <input type="checkbox"/> YES <input type="checkbox"/> NO	
APPROVED <input type="checkbox"/> DISAPPROVED <input type="checkbox"/>	2) Reject Codes

Were open hole logs run?	<input type="radio"/> yes <input checked="" type="radio"/> no
Date Last log was run	
Was CO ₂ encountered?	<input type="radio"/> yes <input checked="" type="radio"/> no at what depths?
Was H ₂ S encountered?	<input type="radio"/> yes <input checked="" type="radio"/> no at what depths?
Were unusual drilling circumstances encountered? If yes, briefly explain below	<input type="radio"/> yes <input checked="" type="radio"/> no

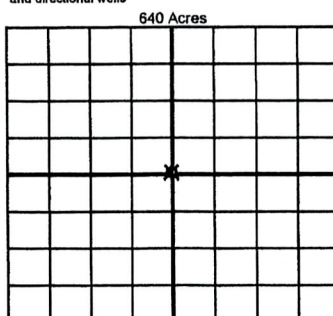
Other remarks: Unable to run open hole logs due to well bore conditions. Cemented csg with 350 sx class H on 1st stage
DV Tool set @ 4980', cemented 2nd stage with 750 sx class H. Laid down directional tools @ 6530' before drilling Wilcox Sd
due to possible loss circulation problems. Ran Scientific gyro for directional information.



If more than three drainholes are proposed, attach a separate sheet indicating the necessary information.

Direction must be stated in degrees azimuth.
Please note, the horizontal drainhole and its end point must be located within the boundaries of the lease or spacing unit.

Directional surveys are required for all drainholes and directional wells



BOTTOM HOLE LOCATION FOR DIRECTIONAL HOLE

SEC 32	TWP 11N	RGE 2W	COUNTY OKLAHOMA
W2NE 1/4 SE SW 1/4 SE 1/4 NW 1/4		Feet From 1/4 Sec Lines	FSL 595 FWL 1813
Measured Total Depth	True Vertical Depth	BHL From Lease, Unit, or Property Line:	
7175	6945	595'	

BOTTOM HOLE LOCATION FOR HORIZONTAL HOLE: (LATERALS)

LATERAL #1			
SEC	TWP	RGE	COUNTY
1/4	1/4	1/4	1/4
Depth of Deviation	Radius of Turn	Direction	Total Length
Measured Total Depth	True Vertical Depth	BHL From Lease, Unit, or Property Line:	

LATERAL #2			
SEC	TWP	RGE	COUNTY
1/4	1/4	1/4	1/4
Depth of Deviation	Radius of Turn	Direction	Total Length
Measured Total Depth	True Vertical Depth	BHL From Lease, Unit, or Property Line:	

LATERAL #3			
SEC	TWP	RGE	COUNTY
1/4	1/4	1/4	1/4
Depth of Deviation	Radius of Turn	Direction	Total Length
Measured Total Depth	True Vertical Depth	BHL From Lease, Unit, or Property Line:	