

Oklahoma Corporation Commission
 Oil & Gas Conservation Division
 Post Office Box 52000
 Oklahoma City, Oklahoma 73152-2000
 Rule 165: 10-3-25

Form 1002A

API No.: 35029213980001

Completion Report

Spud Date: November 19, 2020

OTC Prod. Unit No.: 029-227147-0-0000

Drilling Finished Date: January 08, 2021

1st Prod Date: March 14, 2021

Completion Date: February 26, 2021

Drill Type: HORIZONTAL HOLE

Well Name: LDC 4-23/26H

Purchaser/Measurer: SOUTHWEST ENERGY LP

Location: COAL 23 2N 9E
 NE SW NE NW
 693 FNL 1654 FWL of 1/4 SEC
 Latitude: 34.63419903 Longitude: -96.33112375
 Derrick Elevation: 796 Ground Elevation: 773

First Sales Date: 03/14/2021

Operator: CANYON CREEK ENERGY ARKOMA LLC 24379

2431 E 61ST ST STE 400
 TULSA, OK 74136-1237

Completion Type	
X	Single Zone
	Multiple Zone
	Commingled

Location Exception	
Order No	
720672	

Increased Density	
Order No	
716045	
716046	

Casing and Cement							
Type	Size	Weight	Grade	Feet	PSI	SAX	Top of CMT
CONDUCTOR	20	94	H-40	40			
SURFACE	9 5/8	36	J-55	506		190	SURFACE
PRODUCTION	5 1/2	20	P-110	15650		1655	4542

Liner								
Type	Size	Weight	Grade	Length	PSI	SAX	Top Depth	Bottom Depth
There are no Liner records to display.								

Total Depth: 15660

Packer	
Depth	Brand & Type
There are no Packer records to display.	

Plug	
Depth	Plug Type
There are no Plug records to display.	

Initial Test Data

Test Date	Formation	Oil BBL/Day	Oil-Gravity (API)	Gas MCF/Day	Gas-Oil Ratio Cu FT/BBL	Water BBL/Day	Pumpin or Flowing	Initial Shut-In Pressure	Choke Size	Flow Tubing Pressure
Mar 14, 2021	WOODFORD	23	45	1316	57217	5611	FLOWING	700	64/64	170

Completion and Test Data by Producing Formation

Formation Name: WOODFORD

Code: 319WDFD

Class: GAS

Spacing Orders

Order No	Unit Size
660619	640
661468	640
720671	MULTIUNIT

Perforated Intervals

From	To
6975	15398

Acid Volumes

NONE

Fracture Treatments

378,476 BARRELS FLUID, 20,106,414 POUNDS PROPPANT

Formation	Top
WOODFORD	6670

Were open hole logs run? No

Date last log run:

Were unusual drilling circumstances encountered? No

Explanation:

Other Remarks

There are no Other Remarks.

Lateral Holes

Sec: 26 TWP: 2N RGE: 9E County: COAL

NE SW SW SW

528 FSL 373 FWL of 1/4 SEC

Depth of Deviation: 5883 Radius of Turn: 894 Direction: 182 Total Length: 8423

Measured Total Depth: 15660 True Vertical Depth: 5988 End Pt. Location From Release, Unit or Property Line: 373

FOR COMMISSION USE ONLY

1146949

Status: Accepted

fraciv

GTG

34.63419903
-96.3312375

Form 1002A
Rev. 2009

API NO. 029 21398
OTC PROD. UNIT NO. 029-227147
NOTE: Attach copy of original 1002A if recompletion or reentry.

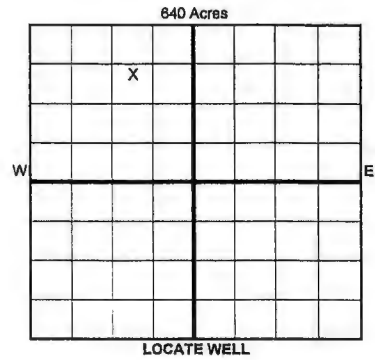
OKLAHOMA CORPORATION COMMISSION
Oil & Gas Conservation Division
Post Office Box 52000
Oklahoma City, Oklahoma 73152-2000
Rule 165:10-3-25

ORIGINAL
 AMENDED (Reason)

COMPLETION REPORT

TYPE OF DRILLING OPERATION
 STRAIGHT HOLE DIRECTIONAL HOLE HORIZONTAL HOLE
 SERVICE WELL

SPUD DATE 11/19/2020
DRLG FINISHED DATE 1/8/2021
DATE OF WELL COMPLETION 2/26/2021
1st PROD DATE 3/14/2021



County Coal SEC 23 TWP 2N RGE 9E
LEASE NAME NW LDC
NE 1/4 SW 1/4 NE 1/4 SW 1/4 FNL OF 1/4 SEC 693 FWL OF 1/4 SEC 1654
ELEVATION 796 Ground 773 Latitude 34.383118N Longitude -96.1952050W
OPERATOR NAME Canyon Creek Energy Arkoma, LLC OTC/OCC OPERATOR NO. 24379-0
ADDRESS 615 E. 4th Street
CITY Tulsa STATE OK ZIP 74120

COMPLETION TYPE
 SINGLE ZONE
 MULTIPLE ZONE
Application Date
 COMMINGLED
Application Date
LOCATION EXCEPTION ORDER 720672
INCREASED DENSITY ORDER NO. 716045/716046

CASING & CEMENT (Form 1002C must be attached)

TYPE	SIZE	WEIGHT	GRADE	FEET	PSI	SAX	TOP OF CMT
CONDUCTOR	20"	94#	H-40	40			
SURFACE	9 5/8"	36#	J55	1000-506		190	Surface
INTERMEDIATE							
PRODUCTION	5 1/2"	20#	P110	15,650		2814	4,542
LINER						1655	
						TOTAL DEPTH	15,660

PACKER @ BRAND & TYPE PLUG @ TYPE PLUG @ TYPE
PACKER @ BRAND & TYPE PLUG @ TYPE PLUG @ TYPE

COMPLETION & TEST DATA BY PRODUCING FORMATION

FORMATION	Woodford			
SPACING & SPACING ORDER NUMBER	661468/660619	640/640	720671	Multistage
CLASS: Oil, Gas, Dry, Inj, Disp, Comm Disp, Svc	Gas			
PERFORATED INTERVALS	6975-15398			
ACID/VOLUME	NONE			
FRACTURE TREATMENT (Fluids/Prop Amounts)	378,476 bbls Fluid 20,106,414 #s 110s Proppant			

Min Gas Allowable (165:10-17-7) Gas Purchaser/Measurer Southwest Energy LP
OR First Sales Date 3/14/2021
Oil Allowable (165:10-13-3)

INITIAL TEST DATA

INITIAL TEST DATE	3/14/2021		
OIL-BBL/DAY	23		
OIL-GRAVITY (API)	45		
GAS-MCF/DAY	1,316		
GAS-OIL RATIO CU FT/BBL	57,217		
WATER-BBL/DAY	5,611		
PUMPING OR FLOWING	Flowing		
INITIAL SHUT-IN PRESSURE	700		
CHOKE SIZE	FO 64/64		
FLOW TUBING PRESSURE	170		

RECEIVED
SEP 30 2021
OKLAHOMA CORPORATION COMMISSION

A record of the formations drilled through, and pertinent remarks are presented on the reverse. I declare that I have knowledge of the contents of this report and am authorized by my organization to make this report, which was prepared by me or under my supervision and direction, with the data and facts stated herein to be true, correct, and complete to the best of my knowledge and belief.

C. Daniel Jacobs
SIGNATURE NAME (PRINT OR TYPE) DATE 9/28/2021 PHONE NUMBER (918) 561-6737
2431 E 61st St #400 Tulsa OK 74136
ADDRESS CITY STATE ZIP EMAIL ADDRESS djacobs@cceok.com

PLEASE TYPE OR USE BLACK INK ONLY

FORMATION RECORD

Give formation names and tops, if available, or descriptions and thickness of formations drilled through. Show intervals cored or drillstem tested.

LEASE NAME _____ LDC _____

WELL NO. 4-23/26H

NAMES OF FORMATIONS	TOP
Woodford	6,670

FOR COMMISSION USE ONLY

ITD on file YES NO

APPROVED _____ DISAPPROVED _____

2) Reject Codes _____

Were open hole logs run? _____ yes no

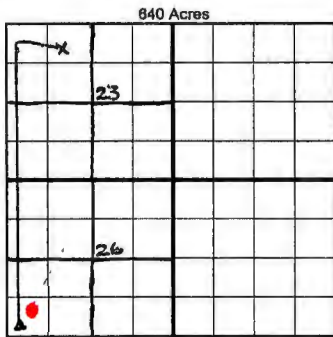
Date Last log was run _____

Was CO₂ encountered? _____ yes no at what depths? _____

Was H₂S encountered? _____ yes no at what depths? _____

Were unusual drilling circumstances encountered? _____ yes no
If yes, briefly explain below _____

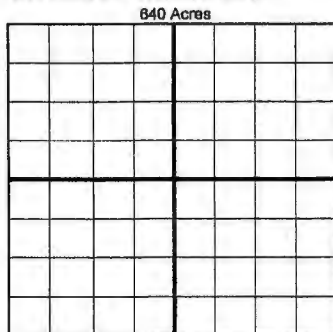
Other remarks: _____



If more than three drainholes are proposed, attach a separate sheet indicating the necessary information.

Direction must be stated in degrees azimuth. Please note, the horizontal drainhole and its end point must be located within the boundaries of the lease or spacing unit.

Directional surveys are required for all drainholes and directional wells.



BOTTOM HOLE LOCATION FOR DIRECTIONAL HOLE

SEC	TWP	RGE	COUNTY							
Spot Location				1/4	1/4	1/4	1/4	Feet From 1/4 Sec Lines	FSL	FWL
Measured Total Depth				True Vertical Depth		BHL From Lease, Unit, or Property Line:				

BOTTOM HOLE LOCATION FOR HORIZONTAL HOLE: (LATERALS)

LATERAL #1

SEC	TWP	RGE	COUNTY									
26	2N	9E	Coal									
Spot Location				NE 1/4	SW 1/4	SW 1/4	SW 1/4	Feet From 1/4 Sec Lines	FSL	528	FWL	373
Depth of Deviation				5,833		Radius of Turn		Direction		Total Length		
						894		182		8423		
Measured Total Depth				15,660		True Vertical Depth		5,988		BHL From Lease, Unit, or Property Line:		
								528' FSL, 373' FWL				

LATERAL #2

SEC	TWP	RGE	COUNTY							
Spot Location				1/4	1/4	1/4	1/4	Feet From 1/4 Sec Lines	FSL	FWL
Depth of Deviation				Radius of Turn		Direction		Total Length		
Measured Total Depth				True Vertical Depth		BHL From Lease, Unit, or Property Line:				

LATERAL #3

SEC	TWP	RGE	COUNTY							
Spot Location				1/4	1/4	1/4	1/4	Feet From 1/4 Sec Lines	FSL	FWL
Depth of Deviation				Radius of Turn		Direction		Total Length		
Measured Total Depth				True Vertical Depth		BHL From Lease, Unit, or Property Line:				