

Oklahoma Corporation Commission
Oil & Gas Conservation Division
Post Office Box 52000
Oklahoma City, Oklahoma 73152-2000
Rule 165: 10-3-25

Form 1002A

API No.: 35073267610000

Completion Report

Spud Date: August 13, 2021

OTC Prod. Unit No.: 073-227404-0-0424

Drilling Finished Date: August 24, 2021

1st Prod Date: September 25, 2021

Completion Date: September 13, 2021

Drill Type: HORIZONTAL HOLE

Well Name: LINCOLN SOUTHEAST OSWEGO UNIT 50-3HO

Purchaser/Measurer:

Location: KINGFISHER 17 17N 5W
SE SE SW SW
185 FSL 1186 FWL of 1/4 SEC
Latitude: 35.941884 Longitude: -97.760753
Derrick Elevation: 0 Ground Elevation: 1065

First Sales Date:

Operator: HINKLE OIL & GAS INC 21639

5600 N MAY AVE STE 295
OKLAHOMA CITY, OK 73112-4275

Completion Type	
X	Single Zone
	Multiple Zone
	Commingled

Location Exception	
Order No	
There are no Location Exception records to display.	

Increased Density	
Order No	
There are no Increased Density records to display.	

Casing and Cement							
Type	Size	Weight	Grade	Feet	PSI	SAX	Top of CMT
CONDUCTOR	20			80			SURFACE
SURFACE	9 5/8	36	LTC	351		135	SURFACE
PRODUCTION	7	26	P-110	6750		230	2466

Liner								
Type	Size	Weight	Grade	Length	PSI	SAX	Top Depth	Bottom Depth
LINER	4 1/2	13.5	P-110	5419	0	465	6428	11847

Total Depth: 11849

Packer	
Depth	Brand & Type
There are no Packer records to display.	

Plug	
Depth	Plug Type
There are no Plug records to display.	

Initial Test Data

Test Date	Formation	Oil BBL/Day	Oil-Gravity (API)	Gas MCF/Day	Gas-Oil Ratio Cu FT/BBL	Water BBL/Day	Pumpin or Flowing	Initial Shut-In Pressure	Choke Size	Flow Tubing Pressure
Sep 28, 2021	OSWEGO	264	45.1	118	447	2872	PUMPING		OPEN	

Completion and Test Data by Producing Formation

Formation Name: OSWEGO

Code: 404OSWG

Class: OIL

Spacing Orders

Order No	Unit Size
52793	UNIT

Perforated Intervals

From	To
6775	11700

Acid Volumes

196,140 GALLONS 15% HCL, 57,733 BARRELS SLICK WATER

Fracture Treatments

There are no Fracture Treatments records to display.

Formation	Top
OSWEGO	6215

Were open hole logs run? No

Date last log run:

Were unusual drilling circumstances encountered? No

Explanation:

Other Remarks

There are no Other Remarks.

Lateral Holes

Sec: 20 TWP: 17N RGE: 17N County: KINGFISHER

SW SW SE SW

1 FSL 1489 FWL of 1/4 SEC

Depth of Deviation: 5596 Radius of Turn: 1407 Direction: 180 Total Length: 4846

Measured Total Depth: 11849 True Vertical Depth: 6364 End Pt. Location From Release, Unit or Property Line: 1

FOR COMMISSION USE ONLY

1147054

Status: Accepted

OCT 25 2021

API NO. 35-073-26761
OTC PROD UNIT NO. 013-227404-0-424

Oil and Gas Conservation Division
P.O. Box 52000
Oklahoma City, OK 73152-2000
405-521-2331
OCCentralProcessing@OCC.OK.GOV



OKLAHOMA Corporation Commission

OKLAHOMA CORPORATION COMMISSION

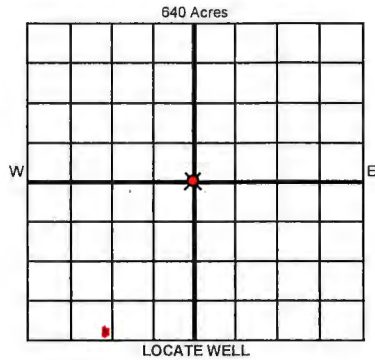
Rule 165:10-3-25

COMPLETION REPORT

ORIGINAL AMENDED (Reason)

TYPE OF DRILLING OPERATION
 STRAIGHT HOLE DIRECTIONAL HOLE HORIZONTAL HOLE
SERVICE WELL
If directional or horizontal, see reverse for bottom hole location.

SPUD DATE 08/13/2021
DRLG FINISHED DATE 08/24/2021
DATE OF WELL COMPLETION 09/13/2021
1st PROD DATE 09/25/2021
RECOMP DATE
ELEVATION Derrick FL Ground 1065'
Latitude 35.941884 Longitude -97.760753
OPERATOR NAME Hinkle Oil & Gas, Inc. OTC / OCC OPERATOR NO. 21639
ADDRESS 5600 N. May Avenue, Suite 295
CITY Oklahoma City STATE OK ZIP 73112



COUNTY Kingfisher SEC 17 TWP 17N RGE 05W
LEASE NAME Lincoln Southeast Oswego Unit WELL NO. 50-3HO
SE 1/4 SE 1/4 SW 1/4 SW 1/4 FSL 185' FWL 1186'
OPERATOR NAME Hinkle Oil & Gas, Inc. OTC / OCC OPERATOR NO. 21639
ADDRESS 5600 N. May Avenue, Suite 295
CITY Oklahoma City STATE OK ZIP 73112

COMPLETION TYPE
 SINGLE ZONE
 MULTIPLE ZONE
Application Date
COMINGLED Application Date
LOCATION EXCEPTION ORDER NO.
MULTIUNIT ORDER NO.
INCREASED DENSITY ORDER NO.

CASING & CEMENT (Attach Form 1002C)

TYPE	SIZE	WEIGHT	GRADE	FEET	PSI	SAX	TOP OF CMT
CONDUCTOR	20"			80'			Surface
SURFACE	9 5/8"	36#	LTC	351'		135	Surface
INTERMEDIATE							
PRODUCTION	7"	26#	P-110	6750'		230	4270' 2966
LINER	4 1/2"	13.5#	P-110	6428'-11,847'		450 465	6428'
						TOTAL DEPTH	11,849'

PACKER @ _____ BRAND & TYPE _____ PLUG @ _____ TYPE _____ PLUG @ _____ TYPE _____
PACKER @ _____ BRAND & TYPE _____ PLUG @ _____ TYPE _____ PLUG @ _____ TYPE _____

COMPLETION & TEST DATA BY PRODUCING FORMATION 40405WGS

FORMATION	Oswego						No Frac
SPACING & SPACING ORDER NUMBER	52793 (unit)						
CLASS: Oil, Gas, Dry, Inj, Disp, Comm Disp, Svc	Oil						
PERFORATED INTERVALS	6775'-11,700'						
ACID/VOLUME							
FRACTURE TREATMENT (Fluids/Prop Amounts)	196140 G. 15% HCL 57733 Bbl. Slick Wtr						

Min Gas Allowable (165:10-17-7) OR Oil Allowable (165:10-13-3)
Purchaser/Measurer _____ First Sales Date _____

INITIAL TEST DATA

INITIAL TEST DATE	9/28/2021				
OIL-BBL/DAY	264				
OIL-GRAVITY (API)	45.1				
GAS-MCF/DAY	118				
GAS-OIL RATIO CU FT/BBL	447				
WATER-BBL/DAY	2872				
PUMPING OR FLOWING	Pumping				
INITIAL SHUT-IN PRESSURE	N/A				
CHOKE SIZE	Open				
FLOW TUBING PRESSURE	N/A				

A record of the formations drilled through, and pertinent remarks are presented on the reverse. I declare that I have knowledge of the contents of this report and am authorized by my organization to make this report, which was prepared by me or under my supervision and direction, with the data and facts stated herein to be true, correct, and complete to the best of my knowledge and belief.

B. Hinkle SIGNATURE Bruce A. Hinkle NAME (PRINT OR TYPE) 10/22/2021 DATE PHONE NUMBER
5600 N. May Avenue, Suite 295 Oklahoma City OK 73112 ADDRESS CITY STATE ZIP
Laurahinkle@hoagi.com EMAIL ADDRESS

PLEASE TYPE OR USE BLACK INK ONLY
FORMATION RECORD

Give formation names and tops, if available, or descriptions and thickness of formations drilled through. Show intervals cored or drillstem tested.

LEASE NAME Lincoln Southeast Oswego Unit WELL NO. 50-3HO

NAMES OF FORMATIONS	TOP
Oswego	6215'

FOR COMMISSION USE ONLY

ITD on file YES NO

APPROVED _____ DISAPPROVED _____

2) Reject Codes _____

Were open hole logs run? yes no

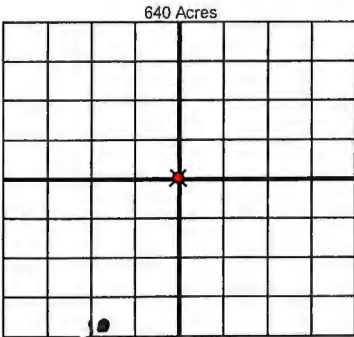
Date Last log was run _____

Was CO₂ encountered? yes no at what depths? _____

Was H₂S encountered? yes no at what depths? _____

Were unusual drilling circumstances encountered? yes no
If yes, briefly explain below _____

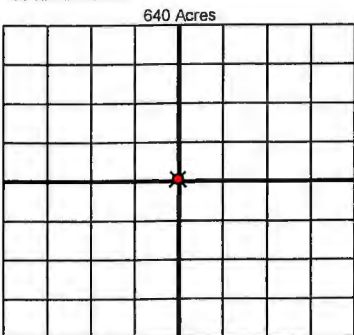
Other remarks: _____



If more than three drainholes are proposed, attach a separate sheet indicating the necessary information.

Direction must be stated in degrees azimuth. Please note, the horizontal drainhole and its end point must be located within the boundaries of the lease or spacing unit.

Directional surveys are required for all drainholes and directional wells



BOTTOM HOLE LOCATION FOR DIRECTIONAL HOLE

SEC	TWP	RGE	COUNTY			
	1/4	1/4	1/4	1/4	Feet From 1/4 Sec Lines	
Measured Total Depth		True Vertical Depth		BHL From Lease, Unit, or Property Line:		

BOTTOM HOLE LOCATION FOR HORIZONTAL HOLE: (LATERALS)

LATERAL #1

SEC	TWP	RGE	COUNTY			
20	17N	05W	Kingfisher	1489		
SW 1/4	SW 1/4	SE 1/4	SE SW 1/4	Feet From 1/4 Sec Lines	FSL	FWL 1480'
Depth of Deviation 5596'		Radius of Turn 1407'		Direction 180° X	Total Length 4846'	
Measured Total Depth 11,849'		True Vertical Depth 6364'		BHL From Lease, Unit, or Property Line: 1'		

LATERAL #2

SEC	TWP	RGE	COUNTY			
	1/4	1/4	1/4	1/4	Feet From 1/4 Sec Lines	
Depth of Deviation		Radius of Turn		Direction		Total Length
Measured Total Depth		True Vertical Depth		BHL From Lease, Unit, or Property Line:		

LATERAL #3

SEC	TWP	RGE	COUNTY			
	1/4	1/4	1/4	1/4	Feet From 1/4 Sec Lines	
Depth of Deviation		Radius of Turn		Direction		Total Length
Measured Total Depth		True Vertical Depth		BHL From Lease, Unit, or Property Line:		