

Oklahoma Corporation Commission
 Oil & Gas Conservation Division
 Post Office Box 52000
 Oklahoma City, Oklahoma 73152-2000
 Rule 165: 10-3-25

Form 1002A

API No.: 35073267650000

Completion Report

Spud Date: July 31, 2021

OTC Prod. Unit No.: 073-227298-0-0424

Drilling Finished Date: August 12, 2021

1st Prod Date: August 25, 2021

Completion Date: August 15, 2021

Drill Type: HORIZONTAL HOLE

Min Gas Allowable: Yes

Well Name: LINCOLN SOUTHEAST OSWEGO UNIT 56-4HO

Purchaser/Measurer:

Location: KINGFISHER 21 17N 5W
 SW SW SE SW
 307 FSL 1549 FWL of 1/4 SEC
 Latitude: 35.927701 Longitude: -97.742125
 Derrick Elevation: 0 Ground Elevation: 995

First Sales Date:

Operator: HINKLE OIL & GAS INC 21639

5600 N MAY AVE STE 295
 OKLAHOMA CITY, OK 73112-4275

Completion Type	
X	Single Zone
	Multiple Zone
	Commingled

Location Exception
Order No
There are no Location Exception records to display.

Increased Density
Order No
There are no Increased Density records to display.

Casing and Cement							
Type	Size	Weight	Grade	Feet	PSI	SAX	Top of CMT
CONDUCTOR	20			80			SURFACE
SURFACE	9 5/8	36		340		135	SURFACE
PRODUCTION	7	26	P-110	6731		230	4275

Liner								
Type	Size	Weight	Grade	Length	PSI	SAX	Top Depth	Bottom Depth
LINER	4 1/2	13.5	P-110	4789	0	450	6426	11215

Total Depth: 11223

Packer	
Depth	Brand & Type
There are no Packer records to display.	

Plug	
Depth	Plug Type
There are no Plug records to display.	

Initial Test Data

Test Date	Formation	Oil BBL/Day	Oil-Gravity (API)	Gas MCF/Day	Gas-Oil Ratio Cu FT/BBL	Water BBL/Day	Pumpin or Flowing	Initial Shut-In Pressure	Choke Size	Flow Tubing Pressure
Aug 27, 2021	OSWEGO	322	46.1	1017	3158	3423	PUMPING		OPEN	

Completion and Test Data by Producing Formation

Formation Name: OSWEGO

Code: 404OSWG

Class: OIL

Spacing Orders

Order No	Unit Size
52793	UNIT

Perforated Intervals

From	To
6690	11105

Acid Volumes

119,164 GALLONS 15% HCL, 58,034 BARRELS SLICK WATER

Fracture Treatments

There are no Fracture Treatments records to display.

Formation	Top
OSWEGO	6100

Were open hole logs run? No

Date last log run:

Were unusual drilling circumstances encountered? No

Explanation:

Other Remarks

There are no Other Remarks.

Lateral Holes

Sec: 21 TWP: 17N RGE: 5W County: KINGFISHER

NE NE NE NW

1 FNL 2584 FWL of 1/4 SEC

Depth of Deviation: 5554 Radius of Turn: 1237 Direction: 360 Total Length: 4432

Measured Total Depth: 11223 True Vertical Depth: 6191 End Pt. Location From Release, Unit or Property Line: 1

FOR COMMISSION USE ONLY

1147053

Status: Accepted

API NO. 35-073-26765
 OTC PROD. UNIT NO. 013-227298-10-24

Oil and Gas Conservation Division
 P.O. Box 52000
 Oklahoma City, OK 73152-2000
 405-521-2331
 OCCentralProcessing@OCC.OK.GOV



OKLAHOMA
 Corporation
 Commission

RECEIVED

Form 1002A
 Rev. 2020

OCT 25 2021

ORIGINAL
 AMENDED (Reason) _____

Rule 165:10-3-25

COMPLETION REPORT

OKLAHOMA CORPORATION
 COMMISSION

TYPE OF DRILLING OPERATION
 STRAIGHT HOLE DIRECTIONAL HOLE HORIZONTAL HOLE
 SERVICE WELL

SPUD DATE 07/31/2021
 DRG FINISHED DATE 08/12/2021

If directional or horizontal, see reverse for bottom hole location.

DATE OF WELL COMPLETION 08/15/2021

COUNTY Kingfisher SEC 21 TWP 17N RGE 05W

1st PROD DATE 08/25/2021

LEASE NAME Lincoln Southeast Oswego Unit WELL NO. 56-4HO

RECOMP DATE

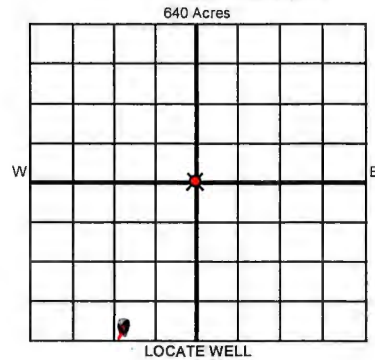
SW 1/4 SW 1/4 SE 1/4 SW 1/4 FSL 307' FWL 1549'

ELEVATION Ground 995' Latitude 35.927701 Longitude -97.742125

OPERATOR NAME Hinkle Oil & Gas, Inc. OTC / OCC OPERATOR NO. 21639

ADDRESS 5600 N. May Avenue, Suite 295

CITY Oklahoma City STATE OK ZIP 73112



COMPLETION TYPE

<input checked="" type="radio"/> SINGLE ZONE	
<input type="radio"/> MULTIPLE ZONE	Application Date
<input type="radio"/> COMMINGLED	Application Date
LOCATION EXCEPTION ORDER NO.	
MULTIUNIT ORDER NO.	
INCREASED DENSITY ORDER NO.	

CASING & CEMENT (Attach Form 1002C)

TYPE	SIZE	WEIGHT	GRADE	FEET	PSI	SAX	TOP OF CMT
CONDUCTOR	20"			80'			Surface
SURFACE	9 5/8"	36#		340'		135	Surface
INTERMEDIATE							
PRODUCTION	7"	26#	P-110	6731'		230	4275'
LINER	4 1/2"	13.5#	P-110	6426'-11,215'		450	6426'

PACKER @ _____ BRAND & TYPE _____ PLUG @ _____ TYPE _____ PLUG @ _____ TYPE _____ TOTAL DEPTH 11,223'

COMPLETION & TEST DATA BY PRODUCING FORMATION *40403WIG*

FORMATION	Oswego						No Frac
SPACING & SPACING ORDER NUMBER	52793 (unit)						
CLASS: Oil, Gas, Dry, Inj, Disp, Comm Disp, Svc	Oil <input checked="" type="checkbox"/>						
PERFORATED INTERVALS	6690'-11,105'						
ACID/VOLUME							
FRACTURE TREATMENT (Fluids/Prop Amounts)	119164 G. 15% HCL 58034 Bbl. Slick Wtr						

Min Gas Allowable (165:10-17-7) OR Oil Allowable (165:10-13-3) Purchaser/Measurer _____ First Sales Date _____

INITIAL TEST DATA

INITIAL TEST DATE	08/27/2021				
OIL-BBL/DAY	322				
OIL-GRAVITY (API)	46.1				
GAS-MCF/DAY	1017				
GAS-OIL RATIO CU FT/BBL	3158				
WATER-BBL/DAY	3423				
PUMPING OR FLOWING	Pumping				
INITIAL SHUT-IN PRESSURE	N/A				
CHOKE SIZE	Open				
FLOW TUBING PRESSURE	N/A				

A record of the formations drilled through, and pertinent remarks are presented on the reverse. I declare that I have knowledge of the contents of this report and am authorized by my organization to make this report, which was prepared by me or under my supervision and direction, with the data and facts stated herein to be true, correct, and complete to the best of my knowledge and belief.

B. Hinkle SIGNATURE Bruce A. Hinkle NAME (PRINT OR TYPE) 10/22/2021 DATE 405-848-0924 PHONE NUMBER
 5600 N. May Avenue, Suite 295 Oklahoma City OK 73112 ADDRESS CITY STATE ZIP
 Laurahinkle@hoagi.com EMAIL ADDRESS

PLEASE TYPE OR USE BLACK INK ONLY
FORMATION RECORD

Give formation names and tops, if available, or descriptions and thickness of formations drilled through. Show intervals cored or drillstem tested.

LEASE NAME Lincoln Southeast Oswego Unit WELL NO. 56-4HO

NAMES OF FORMATIONS	TOP
Oswego	6100'

FOR COMMISSION USE ONLY

ITD on file YES NO

APPROVED _____ DISAPPROVED _____

2) Reject Codes _____

Were open hole logs run? yes no

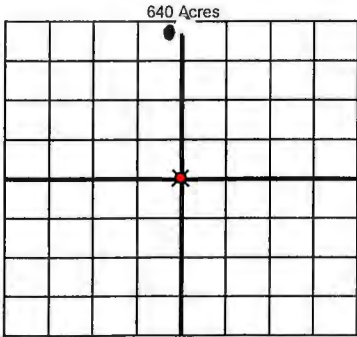
Date Last log was run _____

Was CO₂ encountered? yes no at what depths? _____

Was H₂S encountered? yes no at what depths? _____

Were unusual drilling circumstances encountered? yes no
If yes, briefly explain below _____

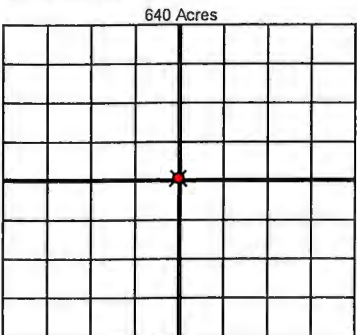
Other remarks: _____



If more than three drainholes are proposed, attach a separate sheet indicating the necessary information.

Direction must be stated in degrees azimuth. Please note, the horizontal drainhole and its end point must be located within the boundaries of the lease or spacing unit.

Directional surveys are required for all drainholes and directional wells



BOTTOM HOLE LOCATION FOR DIRECTIONAL HOLE

SEC	TWP	RGE	COUNTY
1/4	1/4	1/4	1/4
Measured Total Depth		True Vertical Depth	BHL From Lease, Unit, or Property Line:

BOTTOM HOLE LOCATION FOR HORIZONTAL HOLE: (LATERALS)

LATERAL #1

SEC	TWP	RGE	COUNTY
21	17N	05W	Kingfisher
NE 1/4	NE 1/4	NE 1/4	NW 1/4
Depth of Deviation	5554'	Radius of Turn	1237'
Measured Total Depth	11,223'	True Vertical Depth	6191'
Feet From 1/4 Sec Lines		FNL	1'
Direction		360°	
Total Length		4432'	
BHL From Lease, Unit, or Property Line:		1'	

2584
FAK-2640

LATERAL #2

SEC	TWP	RGE	COUNTY
1/4	1/4	1/4	1/4
Depth of Deviation	Radius of Turn	Direction	Total Length
Measured Total Depth	True Vertical Depth	BHL From Lease, Unit, or Property Line:	

LATERAL #3

SEC	TWP	RGE	COUNTY
1/4	1/4	1/4	1/4
Depth of Deviation	Radius of Turn	Direction	Total Length
Measured Total Depth	True Vertical Depth	BHL From Lease, Unit, or Property Line:	