

Oklahoma Corporation Commission  
 Oil & Gas Conservation Division  
 Post Office Box 52000  
 Oklahoma City, Oklahoma 73152-2000  
 Rule 165: 10-3-25

Form 1002A

API No.: 35073267630001

**Completion Report**

Spud Date: July 15, 2021

OTC Prod. Unit No.: 073-227331-0-0424

Drilling Finished Date: July 30, 2021

1st Prod Date: August 06, 2021

Completion Date: August 02, 2021

**Drill Type: HORIZONTAL HOLE**

Min Gas Allowable: Yes

Well Name: LINCOLN SOUTHEAST OSWEGO UNIT 46-3HO

Purchaser/Measurer:

Location: KINGFISHER 19 17N 5W  
 SW NE NE NW  
 350 FNL 2077 FWL of 1/4 SEC  
 Latitude: 35.940533 Longitude: -97.77519  
 Derrick Elevation: 0 Ground Elevation: 1020

First Sales Date:

Operator: HINKLE OIL & GAS INC 21639

5600 N MAY AVE STE 295  
 OKLAHOMA CITY, OK 73112-4275

Completion Type	
X	Single Zone
	Multiple Zone
	Commingled

Location Exception	
Order No	
There are no Location Exception records to display.	

Increased Density	
Order No	
There are no Increased Density records to display.	

Casing and Cement							
Type	Size	Weight	Grade	Feet	PSI	SAX	Top of CMT
CONDUCTOR	20			80			SURFACE
SURFACE	9 5/8	36	LTC	353		135	SURFACE
PRODUCTION	7	26	P-110	6790		230	3808

Liner								
Type	Size	Weight	Grade	Length	PSI	SAX	Top Depth	Bottom Depth
LINER	4 1/2	13.5	P-110	5146	0	550	6454	11600

**Total Depth: 11615**

Packer	
Depth	Brand & Type
There are no Packer records to display.	

Plug	
Depth	Plug Type
There are no Plug records to display.	

Initial Test Data

Test Date	Formation	Oil BBL/Day	Oil-Gravity (API)	Gas MCF/Day	Gas-Oil Ratio Cu FT/BBL	Water BBL/Day	Pumpin or Flowing	Initial Shut-In Pressure	Choke Size	Flow Tubing Pressure
Aug 08, 2021	OSWEGO	616	46.1	437	709	2076	PUMPING		OPEN	

**Completion and Test Data by Producing Formation**

Formation Name: OSWEGO

Code: 404OSWG

Class: OIL

**Spacing Orders**

Order No	Unit Size
52793	UNIT

**Perforated Intervals**

From	To
6845	11490

**Acid Volumes**

196,560 GALLONS 15% HCL, 58,372 BARRELS SLICK WATER

**Fracture Treatments**

There are no Fracture Treatments records to display.

Formation	Top
OSWEGO	6215

Were open hole logs run? No

Date last log run:

Were unusual drilling circumstances encountered? No

Explanation:

**Other Remarks**

There are no Other Remarks.

**Lateral Holes**

Sec: 19 TWP: 17N RGE: 5W County: KINGFISHER

SW SW SE SW

1 FSL 1354 FWL of 1/4 SEC

Depth of Deviation: 5643 Radius of Turn: 1431 Direction: 179 Total Length: 4541

Measured Total Depth: 11615 True Vertical Depth: 6375 End Pt. Location From Release, Unit or Property Line: 1

**FOR COMMISSION USE ONLY**

Status: Accepted

1147051

API NO. 35-073-26763  
 OTC PROD UNIT NO. 073-227331-0

Oil and Gas Conservation Division  
 P.O. Box 52000  
 Oklahoma City, OK 73152-2000  
 405-521-2331  
 OCCCentralProcessing@OCC.OK.GOV



**OKLAHOMA**  
 Corporation  
 Commission

RECEIVED

Form 1002A  
 Rev. 2020

OCT 25 2021

ORIGINAL  
 AMENDED (Reason) \_\_\_\_\_

Rule 165:10-3-25

COMPLETION REPORT

OKLAHOMA CORPORATION  
 COMMISSION

TYPE OF DRILLING OPERATION  
 STRAIGHT HOLE  DIRECTIONAL HOLE  HORIZONTAL HOLE  
 SERVICE WELL  
 If directional or horizontal, see reverse for bottom hole location.

SPUD DATE 07/15/2021  
 DRLG FINISHED DATE 07/30/2021

COUNTY Kingfisher SEC 19 TWP 17N RGE 05W

DATE OF WELL COMPLETION 08/02/2021

LEASE NAME Lincoln Southeast Oswego Unit WELL NO. 46-3HO

1st PROD DATE 08/06/2021

SW 1/4 NE 1/4 NE 1/4 NW 1/4 (FNL) 350' FWL 2077'

RECOMP DATE

ELEVATION Ground 1020' Latitude 35.940533

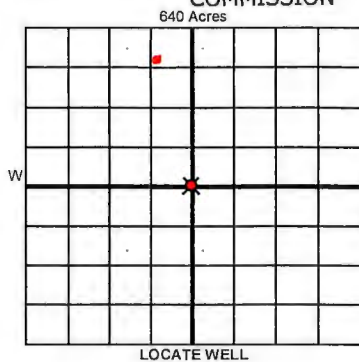
Longitude -97.775190

OPERATOR NAME Hinkle Oil & Gas, Inc.

OTC / OCC OPERATOR NO. 21639

ADDRESS 5600 N. May Avenue, Suite 295

CITY Oklahoma City STATE OK ZIP 73112



LOCATE WELL

COMPLETION TYPE

<input checked="" type="radio"/> SINGLE ZONE
<input type="radio"/> MULTIPLE ZONE Application Date
<input type="radio"/> COMMINGLED Application Date
LOCATION EXCEPTION ORDER NO.
MULTIUNIT ORDER NO.
INCREASED DENSITY ORDER NO.

CASING & CEMENT (Attach Form 1002C)

TYPE	SIZE	WEIGHT	GRADE	FEET	PSI	SAX	TOP OF CMT
CONDUCTOR	20"			80'			Surface
SURFACE	9 5/8"	36#	LTC	353'		135	Surface
INTERMEDIATE							
PRODUCTION	7"	26#	P-110	6790'		230	2982' 3808'
LINER	4 1/2"	13.5#	P-110	6454'-11,600'		550	6454'

PACKER @ \_\_\_\_\_ BRAND & TYPE \_\_\_\_\_ PLUG @ \_\_\_\_\_ TYPE \_\_\_\_\_ PLUG @ \_\_\_\_\_ TYPE \_\_\_\_\_ TOTAL DEPTH 11,615'

COMPLETION & TEST DATA BY PRODUCING FORMATION *4040SWG*

FORMATION	Oswego				No Frac
SPACING & SPACING ORDER NUMBER	52793 (unit)				
CLASS: Oil, Gas, Dry, Inj, Disp, Comm Disp, Svc	Oil				
PERFORATED INTERVALS	6845'-11,490'				
ACID/VOLUME					
FRACTURE TREATMENT (Fluids/Prop Amounts)	196560 G. 15% HCL 58372 Bbl. Slick Wtr				

Min Gas Allowable (165:10-17-7) OR  Oil Allowable (165:10-13-3) Purchaser/Measurer \_\_\_\_\_ First Sales Date \_\_\_\_\_

INITIAL TEST DATA

INITIAL TEST DATE	08/08/2021			
OIL-BBL/DAY	616			
OIL-GRAVITY (API)	46.1			
GAS-MCF/DAY	437			
GAS-OIL RATIO CU FT/BBL	709			
WATER-BBL/DAY	2076			
PUMPING OR FLOWING	Pumping			
INITIAL SHUT-IN PRESSURE	N/A			
CHOKE SIZE	Open			
FLOW TUBING PRESSURE	N/A			

A record of the formations drilled through, and pertinent remarks are presented on the reverse. I declare that I have knowledge of the contents of this report and am authorized by my organization to make this report, which was prepared by me or under my supervision and direction, with the data and facts stated herein to be true, correct, and complete to the best of my knowledge and belief.

*B. Hinkle* SIGNATURE      Bruce A. Hinkle NAME (PRINT OR TYPE)      10/22/2021 DATE      405-848-0924 PHONE NUMBER

5600 N. May Avenue, Suite 295 ADDRESS      Oklahoma City CITY      OK STATE      73112 ZIP      Laurahinkle@hoagi.com EMAIL ADDRESS

PLEASE TYPE OR USE BLACK INK ONLY  
FORMATION RECORD

Give formation names and tops, if available, or descriptions and thickness of formations drilled through. Show intervals cored or drillstem tested.

LEASE NAME Lincoln Southeast Oswego Unit WELL NO. 46-3HO

NAMES OF FORMATIONS	TOP
Oswego	6215'

FOR COMMISSION USE ONLY

ITD on file  YES  NO

APPROVED \_\_\_\_\_ DISAPPROVED \_\_\_\_\_

2) Reject Codes \_\_\_\_\_

\_\_\_\_\_

\_\_\_\_\_

\_\_\_\_\_

Were open hole logs run?  yes  no

Date Last log was run \_\_\_\_\_

Was CO<sub>2</sub> encountered?  yes  no at what depths? \_\_\_\_\_

Was H<sub>2</sub>S encountered?  yes  no at what depths? \_\_\_\_\_

Were unusual drilling circumstances encountered?  yes  no

If yes, briefly explain below \_\_\_\_\_

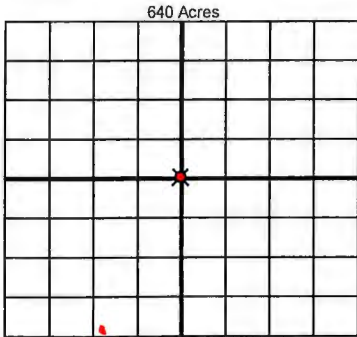
Other remarks: \_\_\_\_\_

\_\_\_\_\_

\_\_\_\_\_

\_\_\_\_\_

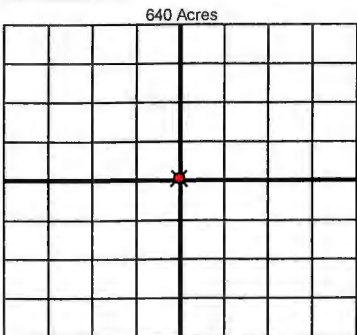
\_\_\_\_\_



If more than three drainholes are proposed, attach a separate sheet indicating the necessary information.

Direction must be stated in degrees azimuth. Please note, the horizontal drainhole and its end point must be located within the boundaries of the lease or spacing unit.

Directional surveys are required for all drainholes and directional wells



BOTTOM HOLE LOCATION FOR DIRECTIONAL HOLE

SEC	TWP	RGE	COUNTY			
1/4	1/4	1/4	1/4	Feet From 1/4 Sec Lines		
Measured Total Depth		True Vertical Depth		BHL From Lease, Unit, or Property Line:		

BOTTOM HOLE LOCATION FOR HORIZONTAL HOLE: (LATERALS)

LATERAL #1

SEC	TWP	RGE	COUNTY			
19	17N	05W	Kingfisher			
SW 1/4	SW 1/4	SE 1/4	SW 1/4	Feet From 1/4 Sec Lines	FSL 1'	FWL 1354' 4300'
Depth of Deviation 5643'		Radius of Turn 1431'		Direction 179° X		Total Length 4541'
Measured Total Depth 11,615'		True Vertical Depth 6375'		BHL From Lease, Unit, or Property Line: 1'		

LATERAL #2

SEC	TWP	RGE	COUNTY			
1/4	1/4	1/4	1/4	Feet From 1/4 Sec Lines		
Depth of Deviation		Radius of Turn		Direction		Total Length
Measured Total Depth		True Vertical Depth		BHL From Lease, Unit, or Property Line:		

LATERAL #3

SEC	TWP	RGE	COUNTY			
1/4	1/4	1/4	1/4	Feet From 1/4 Sec Lines		
Depth of Deviation		Radius of Turn		Direction		Total Length
Measured Total Depth		True Vertical Depth		BHL From Lease, Unit, or Property Line:		