

Oklahoma Corporation Commission  
 Oil & Gas Conservation Division  
 Post Office Box 52000  
 Oklahoma City, Oklahoma 73152-2000  
 Rule 165: 10-3-25

Form 1002A

API No.: 35073267900000

**Completion Report**

Spud Date: October 31, 2021

OTC Prod. Unit No.: 073-227557-0-0424

Drilling Finished Date: November 09, 2021

1st Prod Date: November 26, 2021

Completion Date: November 21, 2021

**Drill Type: HORIZONTAL HOLE**

Min Gas Allowable: Yes

Well Name: LINCOLN SOUTHEAST OSWEGO UNIT 89-3HO

Purchaser/Measurer:

Location: KINGFISHER 29 17N 5W  
 SE SE SW SE  
 171 FSL 1381 FEL of 1/4 SEC  
 Latitude: 35.912867 Longitude: -97.751269  
 Derrick Elevation: 0 Ground Elevation: 986

First Sales Date:

Operator: HINKLE OIL & GAS INC 21639

5600 N MAY AVE STE 295  
 OKLAHOMA CITY, OK 73112-4275

Completion Type	
X	Single Zone
	Multiple Zone
	Commingled

Location Exception
Order No
There are no Location Exception records to display.

Increased Density
Order No
There are no Increased Density records to display.

Casing and Cement							
Type	Size	Weight	Grade	Feet	PSI	SAX	Top of CMT
CONDUCTOR	20			80			SURFACE
SURFACE	9 5/8	36	LTC	333		125	SURFACE
PRODUCTION	7	29	P-110	6625		225	4140

Liner								
Type	Size	Weight	Grade	Length	PSI	SAX	Top Depth	Bottom Depth
LINER	4 1/2	13.5	P-110	4903	0	450	6377	11280

**Total Depth: 11280**

Packer	
Depth	Brand & Type
There are no Packer records to display.	

Plug	
Depth	Plug Type
There are no Plug records to display.	

Initial Test Data

Test Date	Formation	Oil BBL/Day	Oil-Gravity (API)	Gas MCF/Day	Gas-Oil Ratio Cu FT/BBL	Water BBL/Day	Pumpin or Flowing	Initial Shut-In Pressure	Choke Size	Flow Tubing Pressure
Dec 06, 2021	OSWEGO	450	44.6	431	958	1246	PUMPING		OPEN	

**Completion and Test Data by Producing Formation**

Formation Name: OSWEGO

Code: 404OSWG

Class: OIL

**Spacing Orders**

Order No	Unit Size
52793	UNIT

**Perforated Intervals**

From	To
6650	11100

**Acid Volumes**

194,754 GALLONS 15% HCL AND 58,719 BARRELS SLICKWATER

**Fracture Treatments**

There are no Fracture Treatments records to display.

Formation	Top
OSWEGO	6155

Were open hole logs run? No

Date last log run:

Were unusual drilling circumstances encountered? No

Explanation:

**Other Remarks**

There are no Other Remarks.

**Lateral Holes**

Sec: 29 TWP: 17N RGE: 5W County: KINGFISHER

NE NE NW NE

1 FNL 1325 FEL of 1/4 SEC

Depth of Deviation: 5515 Radius of Turn: 1186 Direction: 6 Total Length: 4579

Measured Total Depth: 11280 True Vertical Depth: 6270 End Pt. Location From Release, Unit or Property Line: 1

**FOR COMMISSION USE ONLY**

1147376

Status: Accepted

API NO. 35-073-26790  
 OTC PROD UNIT NO. 013-227558-0

Oil and Gas Conservation Division  
 P.O. Box 52000  
 Oklahoma City, OK 73152-2000  
 406-521-2331  
 OCCCentralProcessing@OCC.OK.GOV



**OKLAHOMA**  
 Corporation  
 Commission

Form 1002A  
 Rev. 2021

Rule 165-10-3-25

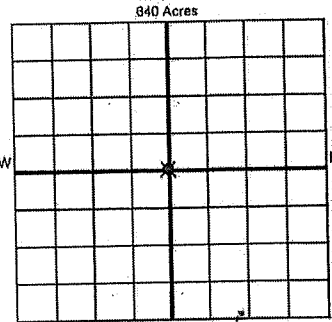
ORIGINAL  
 AMENDED (Reason) \_\_\_\_\_

COMPLETION REPORT

TYPE OF DRILLING OPERATION  
 STRAIGHT HOLE  DIRECTIONAL HOLE  HORIZONTAL HOLE  
 SERVICE WELL  
 If directional or horizontal, see reverse for bottom hole location.

SPUD DATE 10/31/2021  
 DRIG FINISHED DATE 11/09/2021  
 DATE OF WELL COMPLETION 11/21/2021  
 1st PROD DATE 11/26/2021  
 RECOMP DATE \_\_\_\_\_

COUNTY Kingfisher SEC 29 TWP 17N RGE 05W  
 LEASE NAME Lincoln Southeast Oswego Unit WELL NO. 89-3HO  
 SE 1/4 SE 1/4 SW 1/4 SE 1/4 FSL 171' (FEL) 1381'  
 ELEVATION Ground 986' Latitude 35.912867 Longitude -97.751269  
 OPERATOR NAME Hinkle Oil & Gas, Inc. OTC / OCC OPERATOR NO. 21639  
 ADDRESS 5600 N. May Avenue, Suite 295  
 CITY Oklahoma City STATE OK ZIP 73112



COMPLETION TYPE  
 SINGLE ZONE  
 MULTIPLE ZONE Application Date \_\_\_\_\_  
 COMINGLED Application Date \_\_\_\_\_  
 LOCATION EXCEPTION ORDER NO. \_\_\_\_\_  
 MULTIUNIT ORDER NO. \_\_\_\_\_  
 INCREASED DENSITY ORDER NO. \_\_\_\_\_

CASING & CEMENT (Attach Form 1002C)

TYPE	SIZE	WEIGHT	GRADE	FEET	PSI	SAX	TOP OF CMT
CONDUCTOR	20"			80'			Surface
SURFACE	9 5/8"	36#	LTC	333'		125	Surface
INTERMEDIATE							
PRODUCTION	7"	29#	P110	6625'		225	4140'
LINER	4 1/2"	13.5#	P110	6377'-11,280'		450	6377'

PACKER @ \_\_\_\_\_ BRAND & TYPE \_\_\_\_\_ PLUG @ \_\_\_\_\_ TYPE \_\_\_\_\_ PLUG @ \_\_\_\_\_ TYPE \_\_\_\_\_ TOTAL DEPTH 11,280'  
 PACKER @ \_\_\_\_\_ BRAND & TYPE \_\_\_\_\_ PLUG @ \_\_\_\_\_ TYPE \_\_\_\_\_ PLUG @ \_\_\_\_\_ TYPE \_\_\_\_\_

COMPLETION & TEST DATA BY PRODUCING FORMATION

FORMATION	Oswego						No Frac
SPACING & SPACING ORDER NUMBER	52793 (unit)						
CLASS: Oil, Gas, Dry, Inj, Disp, Comm Disp, Svc	Oil						
	6650'-11,100'						
PERFORATED INTERVALS							
ACID/VOLUME							
FRACTURE TREATMENT (Fluids/Prop Amounts)	194754 Gal. 15% HCL & 58719 Bbl. Slick Wtr						

RECEIVED

DEC 20 2021

OKLAHOMA CORPORATION  
 COMMISSION

Min Gas Allowable (165-10-17-7)

Purchaser/Measurer \_\_\_\_\_

OR  
 Oil Allowable (165-10-13-3)

First Sales Date \_\_\_\_\_

INITIAL TEST DATA

INITIAL TEST DATE	12/06/2021					
OIL-BBL/DAY	450					
OIL-GRAVITY (API)	44.6					
GAS-MCF/DAY	431					
GAS-OIL RATIO CU FT/BBL	958					
WATER-BBL/DAY	1246					
PUMPING OR FLOWING	Pumping					
INITIAL SHUT-IN PRESSURE	N/A					
CHOKE SIZE	Open					
FLOW TUBING PRESSURE	N/A					

A record of the formations drilled through, and pertinent remarks are presented on the reverse. I declare that I have knowledge of the contents of this report and am authorized by my organization to make this report, which was prepared by me or under my supervision and direction, with the data and facts stated herein to be true, correct, and complete to the best of my knowledge and belief.

*B. Hinkle*  
 SIGNATURE  
 5600 N. May Avenue, Suite 295  
 ADDRESS

Bruce A. Hinkle  
 NAME (PRINT OR TYPE)  
 Oklahoma City  
 CITY

December 17, 2021  
 DATE  
 405-848-0924  
 PHONE NUMBER  
 Laura.hinkle@hoagi.com  
 EMAIL ADDRESS

73112  
 STATE ZIP

PLEASE TYPE OR USE BLACK INK ONLY  
FORMATION RECORD

Give formation names and tops, if available, or descriptions and thickness of formations drilled through. Show intervals cored or drillstem tested.

LEASE NAME Lincoln Southeast Oswego Unit WELL NO. 89-3HO

NAMES OF FORMATIONS	TOP
Oswego TVD	6155'

FOR COMMISSION USE ONLY

ITD on file  YES  NO

APPROVED \_\_\_\_\_ DISAPPROVED \_\_\_\_\_

2) Reject Codes \_\_\_\_\_

\_\_\_\_\_

\_\_\_\_\_

\_\_\_\_\_

Were open hole logs run?  yes  no

Date Last log was run \_\_\_\_\_

Was CO<sub>2</sub> encountered?  yes  no at what depths? \_\_\_\_\_

Was H<sub>2</sub>S encountered?  yes  no at what depths? \_\_\_\_\_

Were unusual drilling circumstances encountered?  yes  no

If yes, briefly explain below \_\_\_\_\_

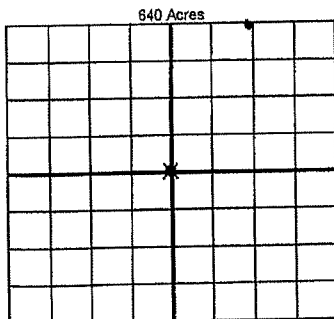
Other remarks:

\_\_\_\_\_

\_\_\_\_\_

\_\_\_\_\_

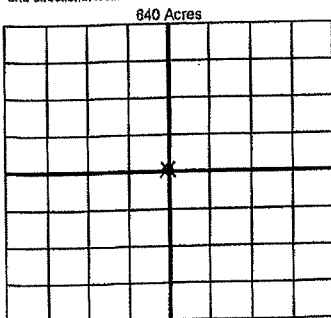
\_\_\_\_\_



If more than three drainholes are proposed, attach a separate sheet indicating the necessary information.

Direction must be stated in degrees azimuth. Please note, the horizontal drainhole and its end point must be located within the boundaries of the lease or spacing unit.

Directional surveys are required for all drainholes and directional wells



BOTTOM HOLE LOCATION FOR DIRECTIONAL HOLE

SEC	TWP	RGE	COUNTY
1/4	1/4	1/4	1/4
Measured Total Depth	True Vertical Depth	BHL From Lease, Unit, or Property Line:	

BOTTOM HOLE LOCATION FOR HORIZONTAL HOLE: (LATERALS)

LATERAL #1

SEC	TWP	RGE	COUNTY
29	17N	05W	Kingfisher
NE 1/4	NE 1/4	NW 1/4	NE 1/4
Depth of Deviation	5515'	Radius of Turn	1186'
Measured Total Depth	11,280'	True Vertical Depth	6270'
Direction			6 North
FNL			1'
FEL			1325'
Total Length			4579'
BHL From Lease, Unit, or Property Line:			1'

LATERAL #2

SEC	TWP	RGE	COUNTY
1/4	1/4	1/4	1/4
Depth of Deviation	Radius of Turn	Direction	Total Length
Measured Total Depth	True Vertical Depth	BHL From Lease, Unit, or Property Line:	

LATERAL #3

SEC	TWP	RGE	COUNTY
1/4	1/4	1/4	1/4
Depth of Deviation	Radius of Turn	Direction	Total Length
Measured Total Depth	True Vertical Depth	BHL From Lease, Unit, or Property Line:	