

Oklahoma Corporation Commission
 Oil & Gas Conservation Division
 Post Office Box 52000
 Oklahoma City, Oklahoma 73152-2000
 Rule 165: 10-3-25

Form 1002A

API No.: 35073267810000

Completion Report

Spud Date: September 22, 2021

OTC Prod. Unit No.: 073-227474-0-0424

Drilling Finished Date: October 17, 2021

1st Prod Date: October 31, 2021

Completion Date: October 21, 2021

Drill Type: HORIZONTAL HOLE

Min Gas Allowable: Yes

Well Name: LINCOLN SOUTHEAST OSWEGO UNIT 93-7HO

Purchaser/Measurer:

Location: KINGFISHER 30 17N 5W
 SW SW SW SE
 227 FSL 2339 FEL of 1/4 SEC
 Latitude: 35.91314 Longitude: -97.772384
 Derrick Elevation: 0 Ground Elevation: 995

First Sales Date:

Operator: HINKLE OIL & GAS INC 21639

5600 N MAY AVE STE 295
 OKLAHOMA CITY, OK 73112-4275

Completion Type	
X	Single Zone
	Multiple Zone
	Commingled

Location Exception	
Order No	
There are no Location Exception records to display.	

Increased Density	
Order No	
There are no Increased Density records to display.	

Casing and Cement							
Type	Size	Weight	Grade	Feet	PSI	SAX	Top of CMT
CONDUCTOR	20			80			SURFACE
SURFACE	9 5/8	36	LTC	325		125	SURFACE
PRODUCTION	7	29	L-110	6762		230	4277

Liner								
Type	Size	Weight	Grade	Length	PSI	SAX	Top Depth	Bottom Depth
LINER	4 1/2	13.5	P-110	5394	0	510	6458	11852

Total Depth: 11852

Packer	
Depth	Brand & Type
There are no Packer records to display.	

Plug	
Depth	Plug Type
There are no Plug records to display.	

Initial Test Data

Test Date	Formation	Oil BBL/Day	Oil-Gravity (API)	Gas MCF/Day	Gas-Oil Ratio Cu FT/BBL	Water BBL/Day	Pumpin or Flowing	Initial Shut-In Pressure	Choke Size	Flow Tubing Pressure
Nov 12, 2021	OSWEGO	842	45.5	616	732	1602	PUMPING		OPEN	

Completion and Test Data by Producing Formation

Formation Name: OSWEGO

Code: 404OSWG

Class: OIL

Spacing Orders

Order No	Unit Size
52793	UNIT

Perforated Intervals

From	To
6835	11730

Acid Volumes

197,526 GALLONS 15% HCL AND 58,219 BARRELS SLICKWATER

Fracture Treatments

There are no Fracture Treatments records to display.

Formation	Top
OSWEGO	6207

Were open hole logs run? No

Date last log run:

Were unusual drilling circumstances encountered? No

Explanation:

Other Remarks

There are no Other Remarks.

Lateral Holes

Sec: 30 TWP: 17N RGE: 5W County: KINGFISHER

NW NW NW NE

1 FNL 2540 FEL of 1/4 SEC

Depth of Deviation: 5688 Radius of Turn: 1933 Direction: 359 Total Length: 4231

Measured Total Depth: 11852 True Vertical Depth: 6336 End Pt. Location From Release, Unit or Property Line: 1

FOR COMMISSION USE ONLY

1147377

Status: Accepted

073-26781

API NO. 35-073-267
OTC PROD. UNIT NO. 073-227474

Oil and Gas Conservation Division
P.O. Box 52000
Oklahoma City, OK 73152-2000
405-521-2331
OCCCentralProcessing@OCC.OK.GOV



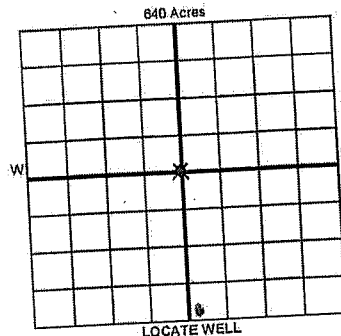
Rule 165:10-3-25

ORIGINAL AMENDED (Reason)

COMPLETION REPORT

TYPE OF DRILLING OPERATION
 STRAIGHT HOLE DIRECTIONAL HOLE HORIZONTAL HOLE
 SERVICE WELL

SPUD DATE 9/22/2021
DRLG FINISHED DATE 10/17/2021
DATE OF WELL COMPLETION 10/21/2021
1st PROD DATE 10/31/2021



COUNTY Kingfisher SEC 30 TWP 17N RGE 05W
LEASE NAME Lincoln Southeast Oswego Unit
SW 1/4 SW 1/4 SW 1/4 SE 1/4 FSL 227' FEL 2339'
ELEVATION 995' Ground Latitude 35.913140 Longitude -97.772384
OPERATOR Hinkle Oil & Gas, Inc. OTC/OCC OPERATOR NO. 21639
ADDRESS 5600 N. May Avenue, Suite 295
CITY Oklahoma City STATE OK ZIP 73112

COMPLETION TYPE
 SINGLE ZONE
 MULTIPLE ZONE
 COMMINGLED
LOCATION EXCEPTION ORDER NO.
MULTIUNIT ORDER NO.
INCREASED DENSITY ORDER NO.

CASING & CEMENT (Attach Form 1002C)

TYPE	SIZE	WEIGHT	GRADE	FEET	PSI	SAX	TOP OF CMT
CONDUCTOR	20"			80'		125	Surface
SURFACE	9 5/8"	36#	LTC	326'		135	Surface
INTERMEDIATE						230	4277'
PRODUCTION	7"	29#	P110	6762'		514507	6458'
LINER	4 1/2"	13.5#	P110	6458'-11,852'			

Per 1002C

PACKER @ BRAND & TYPE PLUG @ TYPE PLUG @ TYPE
PACKER @ BRAND & TYPE PLUG @ TYPE PLUG @ TYPE
COMPLETION & TEST DATA BY PRODUCING FORMATION 404 OSWEGO TOTAL DEPTH 11,852'

FORMATION	Oswego					No Frac
SPACING & SPACING ORDER NUMBER	52793 (unit)					
CLASS: Oil, Gas, Dry, Inf, Disp, Comm Dlep, Svc	Oil					
PERFORATED INTERVALS	6835'-11,730'					
ACID/VOLUME						
FRACTURE TREATMENT (Fluids/Prop Amounts)	197526 Gal. 15% HCL & 58219 Bbl. Slick Wtr					

RECEIVED
DEC 20 2021
OKLAHOMA CORPORATION
COMMISSION

Min Gas Allowable (165:10-17-7) OR Oil Allowable (165:10-13-3)

Purchaser/Measurer First Sales Date

INITIAL TEST DATA					
INITIAL TEST DATE	11/12/2021				
OIL-BBL/DAY	842				
OIL-GRAVITY (API)	45.5				
GAS-MCF/DAY	616				
GAS-OIL RATIO CU FT/BBL	732				
WATER-BBL/DAY	1602				
PUMPING OR FLOWING	Pumping				
INITIAL SHUT-IN PRESSURE	N/A				
CHOKE SIZE	Open				
FLOW TUBING PRESSURE	N/A				

A record of the formations drilled through, and pertinent remarks are presented on the reverse. I declare that I have knowledge of the contents of this report and am authorized by my organization to make this report, which was prepared by me or under my supervision and direction, with the data and facts stated herein to be true, correct, and complete to the best of my knowledge and belief.

SIGNATURE: B. Hinkle NAME (PRINT OR TYPE): Bruce A. Hinkle
ADDRESS: 5600 N. May Avenue, Suite 295 CITY: Oklahoma City STATE: OK ZIP: 73112
DATE: December 17, 2021 PHONE NUMBER: 405-848-0924
EMAIL ADDRESS: Laurahinkle@hoagi.com

PLEASE TYPE OR USE BLACK INK ONLY
FORMATION RECORD

Give formation names and tops, if available, or descriptions and thickness of formations drilled through. Show intervals cored or drillstem tested.

NAMES OF FORMATIONS	TOP
Oswego TVD	6207'

LEASE NAME Lincoln Southeast Oswego Unit WELL NO. 93-7HO

FOR COMMISSION USE ONLY

ITD on file YES NO

APPROVED _____ DISAPPROVED _____

2) Reject Codes _____

Were open hole logs run? yes no

Date Last log was run _____

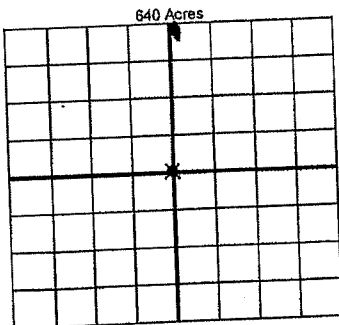
Was CO₂ encountered? yes no at what depths? _____

Was H₂S encountered? yes no at what depths? _____

Were unusual drilling circumstances encountered? yes no

If yes, briefly explain below _____

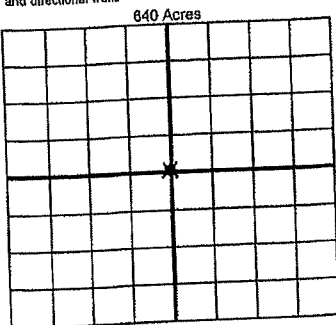
Other remarks:



If more than three drainholes are proposed, attach a separate sheet indicating the necessary information.

Direction must be stated in degrees azimuth. Please note, the horizontal drainholes and its end point must be located within the boundaries of the lease or spacing unit.

Directional surveys are required for all drainholes and directional wells



BOTTOM HOLE LOCATION FOR DIRECTIONAL HOLE

SEC	TWP	RGE	COUNTY
1/4	1/4	1/4	1/4
Measured Total Depth	True Vertical Depth	Feet From 1/4 Sec Lines	
		BHL From Lease, Unit, or Property Line:	

BOTTOM HOLE LOCATION FOR HORIZONTAL HOLE: (LATERALS)

LATERAL #1

SEC	TWP	RGE	COUNTY
30	17N	05W	Kingfisher
NW 1/4	NW 1/4	NW 1/4	NE 1/4
Depth of Deviation	5688'	Radius of Turn	1933'
Measured Total Depth	11,852'	True Vertical Depth	6336'
		Direction	354 North
		FNL	1'
		FEL	2540'
		Total Length	4231'
		BHL From Lease, Unit, or Property Line:	
		1'	

LATERAL #2

SEC	TWP	RGE	COUNTY
1/4	1/4	1/4	1/4
Depth of Deviation	Radius of Turn	Direction	Total Length
Measured Total Depth	True Vertical Depth	BHL From Lease, Unit, or Property Line:	

LATERAL #3

SEC	TWP	RGE	COUNTY
1/4	1/4	1/4	1/4
Depth of Deviation	Radius of Turn	Direction	Total Length
Measured Total Depth	True Vertical Depth	BHL From Lease, Unit, or Property Line:	