

Oklahoma Corporation Commission
Oil & Gas Conservation Division
Post Office Box 52000
Oklahoma City, Oklahoma 73152-2000
Rule 165: 10-3-25

Form 1002A

API No.: 35073267960000

Completion Report

Spud Date: December 23, 2021

OTC Prod. Unit No.: 073-227665-0-0424

Drilling Finished Date: January 02, 2022

1st Prod Date: January 15, 2022

Completion Date: January 10, 2022

Drill Type: HORIZONTAL HOLE

Well Name: LINCOLN SOUTHEAST OSWEGO UNIT 8-2HO

Purchaser/Measurer:

Location: KINGFISHER 8 17N 5W
NE NE NE NW
307 FNL 2396 FWL of 1/4 SEC
Latitude: 35.969445 Longitude: -97.756758
Derrick Elevation: 0 Ground Elevation: 1092

First Sales Date:

Operator: HINKLE OIL & GAS INC 21639

5600 N MAY AVE STE 295
OKLAHOMA CITY, OK 73112-4275

Completion Type	
X	Single Zone
	Multiple Zone
	Commingled

Location Exception	
Order No	
There are no Location Exception records to display.	

Increased Density	
Order No	
There are no Increased Density records to display.	

Casing and Cement							
Type	Size	Weight	Grade	Feet	PSI	SAX	Top of CMT
CONDUCTOR	20			90			SURFACE
PRODUCTION	7	26	P-110	6712		225	3938

Liner								
Type	Size	Weight	Grade	Length	PSI	SAX	Top Depth	Bottom Depth
LINER	4 1/2	13.5	P-110	5283	0	460	6474	11757

Total Depth: 11767

Packer	
Depth	Brand & Type
There are no Packer records to display.	

Plug	
Depth	Plug Type
There are no Plug records to display.	

Initial Test Data										
Test Date	Formation	Oil BBL/Day	Oil-Gravity (API)	Gas MCF/Day	Gas-Oil Ratio Cu FT/BBL	Water BBL/Day	Pumpin or Flowing	Initial Shut-In Pressure	Choke Size	Flow Tubing Pressure
Jan 19, 2022	OSWEGO	561	44.5	501	893	1783	PUMPING		OPEN	

Completion and Test Data by Producing Formation

Formation Name: OSWEGO

Code: 404OSWG

Class: OIL

Spacing Orders

Order No	Unit Size
52793	UNIT

Perforated Intervals

From	To
6730	11590

Acid Volumes

193,998 GALLONS 15% HCL, 57,775 BARRELS SLICK WATER

Fracture Treatments

There are no Fracture Treatments records to display.

Formation	Top
OSWEGO	6189

Were open hole logs run? No

Date last log run:

Were unusual drilling circumstances encountered? No

Explanation:

Other Remarks

There are no Other Remarks.

Lateral Holes

Sec: 8 TWP: 17N RGE: 5W County: KINGFISHER

SE SE SE SW

1 FSL 2615 FWL of 1/4 SEC

Depth of Deviation: 5614 Radius of Turn: 1214 Direction: 177 Total Length: 4939

Measured Total Depth: 11767 True Vertical Depth: 6357 End Pt. Location From Release, Unit or Property Line: 1

FOR COMMISSION USE ONLY

1147616

Status: Accepted

API NO. 35-073-26796
 OTC PROD. UNIT NO. 073-227605
 -0-8474

Oil and Gas Conservation Division
 P.O. Box 52000
 Oklahoma City, OK 73152-2000
 405-521-2331
 OCCCentralProcessing@OCC.OK.GOV



OKLAHOMA
 Corporation
 Commission

Form 1002A
 Rev. 2021

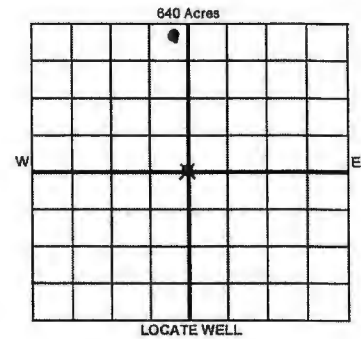
ORIGINAL
 AMENDED (Reason) _____

Rule 165-10-3-25

COMPLETION REPORT

TYPE OF DRILLING OPERATION
 STRAIGHT HOLE DIRECTIONAL HOLE HORIZONTAL HOLE
 SERVICE WELL

SPUD DATE 12/23/2021
 DRLG FINISHED DATE 1/2/2022
 DATE OF WELL COMPLETION 1/10/2022
 1st PROD DATE 1/15/2022
 RECOMP DATE _____
 Longitude -97.756758



County Kingfisher SEC 08 TWP 17N RGE 05W
 LEASE NAME Lincoln Southeast Oswego Unit WELL NO. 8-2HO
 NE 1/4 NE 1/4 NE 1/4 NW 1/4 (FNL) 307' FWL 2396'
 ELEVATION Derrick FL Ground 1092' Latitude 35.969445
 OPERATOR NAME Hinkle Oil & Gas, Inc. OTC / OCC OPERATOR NO. 21639
 ADDRESS 5600 N. May Avenue, Suite 29
 CITY Oklahoma City STATE OK ZIP 73112

COMPLETION TYPE
 SINGLE ZONE
 MULTIPLE ZONE Application Date _____
 COMMINGLED Application Date _____
 LOCATION EXCEPTION ORDER NO. _____
 MULTIUNIT ORDER NO. _____
 INCREASED DENSITY ORDER NO. _____

CASING & CEMENT (Attach Form 1002C)							
TYPE	SIZE	WEIGHT	GRADE	FEET	PSI	SAX	TOP OF CMT
CONDUCTOR	20"			90'			Surface
SURFACE	9 5/8"	36#	LTC	330'		125	Surface
INTERMEDIATE	7"	26#	P110	6712'		225	2772-3938
PRODUCTION							
LINER	4 1/2"	13.5#	P110	6474'-11,757'		460	6474'

PACKER @ _____ BRAND & TYPE _____ PLUG @ _____ TYPE _____ PLUG @ _____ TYPE _____ TOTAL DEPTH 11,767'

COMPLETION & TEST DATA BY PRODUCING FORMATION *40405WGS*

FORMATION	SPACING & SPACING ORDER NUMBER	CLASS: Oil, Gas, Dry, Inj, Disp, Comm Disp, Svc	PERFORATED INTERVALS	ACID/VOLUME	FRACTURE TREATMENT (Fluids/Prop Amounts)
Oswego	52793 (unit)	Oil	6730'-11,590'		193998 Gal. 15% HCL 57775 Bbl. Slick Water

Min Gas Allowable (165-10-17-7) OR Oil Allowable (165-10-13-3)
 Purchaser/Measurer _____ First Sales Date _____

INITIAL TEST DATA

INITIAL TEST DATE	1/19/2022
OIL-BBL/DAY	561
OIL-GRAVITY (API)	44.5
GAS-MCF/DAY	501
GAS-OIL RATIO CU FT/BBL	893
WATER-BBL/DAY	1783
PUMPING OR FLOWING	Pumping
INITIAL SHUT-IN PRESSURE	N/A
CHOKE SIZE	Open
FLOW TUBING PRESSURE	N/A

RECEIVED
 FEB 18 2022
 OKLAHOMA CORPORATION COMMISSION

A record of the formations drilled through, and pertinent remarks are presented on the reverse. I declare that I have knowledge of the contents of this report and am authorized by my organization to make this report, which was prepared by me or under my supervision and direction, with the data and facts stated herein to be true, correct, and complete to the best of my knowledge and belief.

B. Hinkle
 SIGNATURE Bruce A. Hinkle NAME (PRINT OR TYPE)
 5600 N. May Avenue, Suite 295 Oklahoma City OK 73112 ADDRESS CITY STATE ZIP
 2/17/2022 405-848-0924 DATE PHONE NUMBER
 Laurahinkle@hoagi.com EMAIL ADDRESS

PLEASE TYPE OR USE BLACK INK ONLY
FORMATION RECORD

Give formation names and tops, if available, or descriptions and thickness of formations drilled through. Show intervals cored or drillstem tested.

LEASE NAME Lincoln Southeast Oswego Unit WELL NO. 8-2HO

NAMES OF FORMATIONS	TVD	TOP
Oswego		6189'

FOR COMMISSION USE ONLY

ITD on file YES NO

APPROVED _____ DISAPPROVED _____

2) Reject Codes _____

Were open hole logs run? yes no

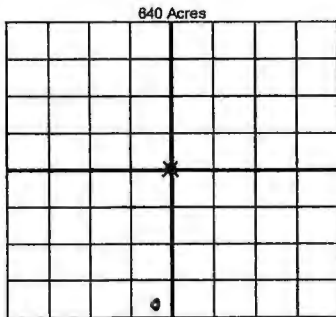
Date Last log was run _____

Was CO₂ encountered? yes no at what depths? _____

Was H₂S encountered? yes no at what depths? _____

Were unusual drilling circumstances encountered? yes no
If yes, briefly explain below _____

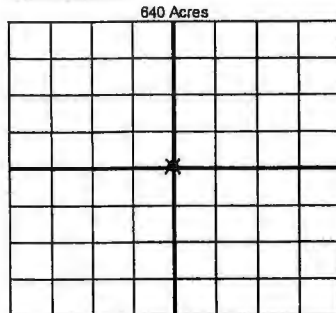
Other remarks: _____



If more than three drainholes are proposed, attach a separate sheet indicating the necessary information.

Direction must be stated in degrees azimuth. Please note, the horizontal drainhole and its end point must be located within the boundaries of the lease or spacing unit.

Directional surveys are required for all drainholes and directional wells



BOTTOM HOLE LOCATION FOR DIRECTIONAL HOLE

SEC	TWP	RGE	COUNTY
1/4	1/4	1/4	1/4
Measured Total Depth	True Vertical Depth	Feet From 1/4 Sec Lines	
BHL From Lease, Unit, or Property Line:			

BOTTOM HOLE LOCATION FOR HORIZONTAL HOLE: (LATERALS)

LATERAL #1

SEC	TWP	RGE	COUNTY
8	17N	05W	Kingfisher
SE 1/4	SE 1/4	SE 1/4	SW 1/4
Depth of Deviation	5614'	Radius of Turn	1214'
Measured Total Depth	11,767'	True Vertical Depth	6357'
Direction		177 South	
Total Length		4939'	
BHL From Lease, Unit, or Property Line:			1'

LATERAL #2

SEC	TWP	RGE	COUNTY
1/4	1/4	1/4	1/4
Depth of Deviation	Radius of Turn	Direction	
Measured Total Depth	True Vertical Depth	Total Length	
BHL From Lease, Unit, or Property Line:			

LATERAL #3

SEC	TWP	RGE	COUNTY
1/4	1/4	1/4	1/4
Depth of Deviation	Radius of Turn	Direction	
Measured Total Depth	True Vertical Depth	Total Length	
BHL From Lease, Unit, or Property Line:			