

Oklahoma Corporation Commission  
Oil & Gas Conservation Division  
Post Office Box 52000  
Oklahoma City, Oklahoma 73152-2000  
Rule 165: 10-3-25

Form 1002A

API No.: 35051247770001

**Completion Report**

Spud Date: May 20, 2020

OTC Prod. Unit No.: 051-227230-0-0000

Drilling Finished Date: June 30, 2020

1st Prod Date: May 15, 2021

Completion Date: May 13, 2021

**Drill Type: HORIZONTAL HOLE**

Well Name: HALE 1-1X36X35X26H

Purchaser/Measurer: WEX

Location: GRADY 1 3N 6W  
NE SW NW NW  
742 FNL 630 FWL of 1/4 SEC  
Latitude: 34.76650525 Longitude: -97.78882812  
Derrick Elevation: 0 Ground Elevation: 1302

First Sales Date: 05/15/2021

Operator: GULFPORT MIDCON LLC 24020

3001 QUAIL SPRINGS PKWY  
OKLAHOMA CITY, OK 73134-2640

Completion Type	
X	Single Zone
	Multiple Zone
	Commingled

Location Exception	
Order No	
719602	

Increased Density	
Order No	
710922	
710923	
710924	
719604	

Casing and Cement							
Type	Size	Weight	Grade	Feet	PSI	SAX	Top of CMT
CONDUCTOR	30		SEAMPIPE	146			SURFACE
SURFACE	13.375	54.4	J-55	1482		1000	SURFACE
INTERMEDIATE	9.625	40	P-110HC	12114		825	7527
PRODUCTION	5.5	23	P-110EC	25831		3365	8635

Liner								
Type	Size	Weight	Grade	Length	PSI	SAX	Top Depth	Bottom Depth
There are no Liner records to display.								

**Total Depth: 25801**

Packer	
Depth	Brand & Type
There are no Packer records to display.	

Plug	
Depth	Plug Type
There are no Plug records to display.	

Initial Test Data										
Test Date	Formation	Oil BBL/Day	Oil-Gravity (API)	Gas MCF/Day	Gas-Oil Ratio Cu FT/BBL	Water BBL/Day	Pumpin or Flowing	Initial Shut-In Pressure	Choke Size	Flow Tubing Pressure
May 24, 2021	WOODFORD	959	58	22169	23117	1874	FLOWING	5225	34	

**Completion and Test Data by Producing Formation**

Formation Name: WOODFORD		Code: 319WDFD		Class: GAS	
<b>Spacing Orders</b>			<b>Perforated Intervals</b>		
<b>Order No</b>	<b>Unit Size</b>	<b>From</b>	<b>To</b>		
238020	640	14600	25731		
257588	640 REINSTATE				
184773	640				
159096	640				
652814	640				
653228	640 NPT				
719600	MULTIUNIT				
<b>Acid Volumes</b>			<b>Fracture Treatments</b>		
72 BARRELS			434,364 BARRELS FLUID, 18,542,611 POUNDS PROPPANT VOLUME		

Formation	Top
WOODFORD	14279

Were open hole logs run? No

Date last log run:

Were unusual drilling circumstances encountered? No

Explanation:

**Other Remarks**  
There are no Other Remarks.

**Lateral Holes**

Sec: 26 TWP: 4N RGE: 6W County: GRADY  
 NW NW NW NE  
 127 FNL 2621 FEL of 1/4 SEC  
 Depth of Deviation: 13511 Radius of Turn: 500 Direction: 342 Total Length: 11790  
 Measured Total Depth: 25801 True Vertical Depth: 14793 End Pt. Location From Release, Unit or Property Line: 127

**FOR COMMISSION USE ONLY**

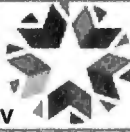
1147637



RECEIVED

API NO. 35-051-24777  
OTC PROD UNIT NO. 051-227230

Oil and Gas Conservation Division  
P.O. Box 52000  
Oklahoma City, OK 73152-2000  
405-521-2331  
OCCentralProcessing@OCC.OK.GOV



OKLAHOMA Corporation Commission

FEB 28 2022 Form 1002A Rev. 2021

OKLAHOMA CORPORATION COMMISSION

ORIGINAL AMENDED (Reason)

Rule 165-10-3-25

COMPLETION REPORT

TYPE OF DRILLING OPERATION  
 STRAIGHT HOLE  DIRECTIONAL HOLE  HORIZONTAL HOLE  
 SERVICE WELL  
If directional or horizontal, see reverse for bottom hole location.

SPUD DATE 5/20/2020  
DRLG FINISHED DATE 6/30/2020  
DATE OF WELL COMPLETION 5/13/2021  
1st PROD DATE 5/15/2021

COUNTY Grady SEC 01 TWP03N RGE 06W

LEASE NAME Hale WELL NO. 1-1X36X36X28H

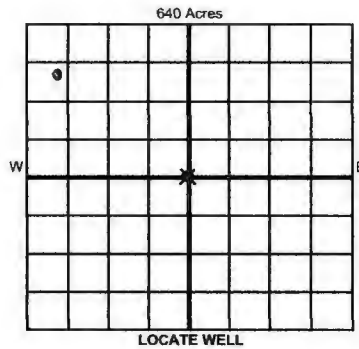
NE 1/4 SW 1/4 NW 1/4 NW 1/4 FNL 742 FWL 630

ELEVATION Ground 1302 Latitude 34.76650525 Longitude -97.78882812

OPERATOR NAME GULFPORT MIDCON LLC OTC / OCC OPERATOR NO. 24020

ADDRESS 3001 QUAIL SPRINGS PARKWAY

CITY OKLAHOMA CITY STATE OK ZIP 73134



COMPLETION TYPE

Table with 2 columns: Completion Type and Remarks. Includes options for SINGLE ZONE, MULTIPLE ZONE, COMMINGLED, LOCATION EXCEPTION, MULTIUNIT ORDER NO., and INCREASED DENSITY.

CASING & CEMENT (Attach Form 1002C)

Table with 9 columns: TYPE, SIZE, WEIGHT, GRADE, FEET, PSI, SAX, TOP OF CMT. Lists conductor, surface, intermediate, production, and liner details.

PACKER @ BRAND & TYPE PLUG @ TYPE PLUG @ TYPE  
PACKER @ BRAND & TYPE PLUG @ TYPE PLUG @ TYPE

TOTAL DEPTH 25801 Per Survey + BHL

COMPLETION & TEST DATA BY PRODUCING FORMATION

Table with 6 columns: FORMATION, SPACING & SPACING ORDER NUMBER, CLASS, PERFORATED INTERVALS, ACID/VOLUME, FRACTURE TREATMENT. Includes handwritten notes like '319 WDFD' and 'Reported'.

Min Gas Allowable (165-10-17-7)

Purchaser/Measurer

WEX



Oil Allowable (165-10-13-3)

First Sales Date

5/15/2021

INITIAL TEST DATA

Table with 6 columns: INITIAL TEST DATE, OIL-BBL/DAY, OIL-GRAVITY (API), GAS-MCF/DAY, GAS-OIL RATIO CU FT/BBL, WATER-BBL/DAY, PUMPING OR FLOWING, INITIAL SHUT-IN PRESSURE, CHOKE SIZE, FLOW TUBING PRESSURE.

A record of the formations drilled through, and pertinent remarks are presented on the reverse. I declare that I have knowledge of the contents of this report and am authorized by my organization to make this report, which was prepared by me or under my supervision and direction, with the data and facts stated herein to be true, correct, and complete to the best of my knowledge and belief.

Monica Pickens

Monica Pickens

2/24/2022 405-252-4703

PLEASE TYPE OR USE BLACK INK ONLY  
FORMATION RECORD

Give formation names and tops, if available, or descriptions and thickness of formations drilled through. Show intervals cored or drillstem tested.

LEASE NAME Hale

WELL NO. 1-1X36X35X26H

NAMES OF FORMATIONS	TOP
Woodford	14,279

FOR COMMISSION USE ONLY

ITD on file  YES  NO

APPROVED \_\_\_\_\_ DISAPPROVED \_\_\_\_\_

2) Reject Codes \_\_\_\_\_

Were open hole logs run?  yes  no

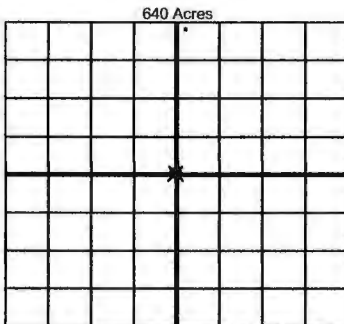
Date Last log was run \_\_\_\_\_

Was CO<sub>2</sub> encountered?  yes  no at what depths? \_\_\_\_\_

Was H<sub>2</sub>S encountered?  yes  no at what depths? \_\_\_\_\_

Were unusual drilling circumstances encountered?  yes  no  
If yes, briefly explain below \_\_\_\_\_

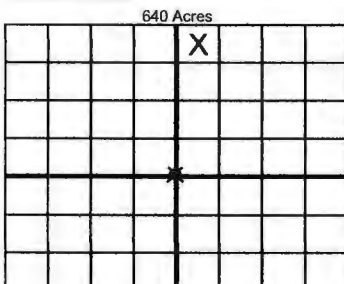
Other remarks: Hale 1-1X36X35X26H Increased Density 710922,710923,710924,719604



If more than three drainholes are proposed, attach a separate sheet indicating the necessary information.

Direction must be stated in degrees azimuth. Please note, the horizontal drainhole and its end point must be located within the boundaries of the lease or spacing unit.

Directional surveys are required for all drainholes and directional wells



BOTTOM HOLE LOCATION FOR DIRECTIONAL HOLE

SEC	TWP	RGE	COUNTY
1/4	1/4	1/4	1/4
Feet From 1/4 Sec Lines			
Measured Total Depth		True Vertical Depth	BHL From Lease, Unit, or Property Line:

BOTTOM HOLE LOCATION FOR HORIZONTAL HOLE: (LATERALS)

LATERAL #1

SEC	TWP	RGE	COUNTY
26	04N	06W	GRADY
NW 1/4	NW 1/4	NW 1/4	NE 1/4
Feet From 1/4 Sec Lines			
Depth of Deviation <u>14,193.3511</u>		Radius of Turn <u>500</u>	Direction <u>342</u>
Measured Total Depth <u>25,801</u>		True Vertical Depth <u>14,793</u>	BHL From Lease, Unit, or Property Line: <u>127</u>

LATERAL #2

SEC	TWP	RGE	COUNTY
1/4	1/4	1/4	1/4
Feet From 1/4 Sec Lines			
Depth of Deviation		Radius of Turn	Direction
Measured Total Depth		True Vertical Depth	Total Length
BHL From Lease, Unit, or Property Line:			

LATERAL #3

SEC	TWP	RGE	COUNTY
1/4	1/4	1/4	1/4
Feet From 1/4 Sec Lines			
Depth of Deviation		Radius of Turn	Direction
Measured Total Depth		True Vertical Depth	Total Length
BHL From Lease, Unit, or Property Line:			