

Oklahoma Corporation Commission
Oil & Gas Conservation Division
Post Office Box 52000
Oklahoma City, Oklahoma 73152-2000
Rule 165: 10-3-25

Form 1002A

API No.: 35073267880000

Completion Report

Spud Date: November 11, 2021

OTC Prod. Unit No.: 073-227558-0-0424

Drilling Finished Date: November 26, 2021

1st Prod Date: December 11, 2021

Completion Date: December 06, 2021

Drill Type: HORIZONTAL HOLE

Min Gas Allowable: Yes

Well Name: LINCOLN SOUTHEAST OSWEGO UNIT 45-3HO

Purchaser/Measurer:

Location: KINGFISHER 13 17N 6W
SE NE SE SE
911 FSL 198 FEL of 1/4 SEC
Latitude: 35.944058 Longitude: -97.782865
Derrick Elevation: 0 Ground Elevation: 1053

First Sales Date:

Operator: HINKLE OIL & GAS INC 21639

5600 N MAY AVE STE 295
OKLAHOMA CITY, OK 73112-4275

Completion Type		Location Exception		Increased Density	
X	Single Zone	Order No		Order No	
	Multiple Zone	There are no Location Exception records to display.		There are no Increased Density records to display.	
	Commingled				

Casing and Cement							
Type	Size	Weight	Grade	Feet	PSI	SAX	Top of CMT
CONDUCTOR	20			90			SURFACE
SURFACE	9 5/8	36	LTC	315		125	SURFACE
PRODUCTION	7	26	P-110	6725		225	2755

Liner								
Type	Size	Weight	Grade	Length	PSI	SAX	Top Depth	Bottom Depth
LINER	4 1/2	13.5	P-110	5461	0	460	6447	11908

Total Depth: 11910

Packer	
Depth	Brand & Type
There are no Packer records to display.	

Plug	
Depth	Plug Type
There are no Plug records to display.	

Initial Test Data

Test Date	Formation	Oil BBL/Day	Oil-Gravity (API)	Gas MCF/Day	Gas-Oil Ratio Cu FT/BBL	Water BBL/Day	Pumpin or Flowing	Initial Shut-In Pressure	Choke Size	Flow Tubing Pressure
Dec 11, 2021	OSWEGO	452	44.7	347	768	2193	PUMPING		OPEN	

Completion and Test Data by Producing Formation

Formation Name: OSWEGO

Code: 404OSWG

Class: OIL

Spacing Orders

Order No	Unit Size
52793	UNIT

Perforated Intervals

From	To
6808	11733

Acid Volumes

196,896 GALLONS 15% HCL, 58,127 BARRELS SLICK WATER

Fracture Treatments

There are no Fracture Treatments records to display.

Formation	Top
OSWEGO	6216

Were open hole logs run? No

Date last log run:

Were unusual drilling circumstances encountered? No

Explanation:

Other Remarks

There are no Other Remarks.

Lateral Holes

Sec: 19 TWP: 17N RGE: 5W County: KINGFISHER

SW SW SW SW

1 FSL 120 FWL of 1/4 SEC

Depth of Deviation: 5674 Radius of Turn: 1238 Direction: 181 Total Length: 4998

Measured Total Depth: 11910 True Vertical Depth: 6435 End Pt. Location From Release, Unit or Property Line: 1

FOR COMMISSION USE ONLY

Status: Accepted

1148180

API NO. 35-073-26788
OTC PROD. UNIT NO. 073-227588
-D-0424

Oil and Gas Conservation Division
P.O. Box 52000
Oklahoma City, OK 73152-2000
405-521-2331
OCCCentralProcessing@OCC.OK.GOV



OKLAHOMA
Corporation
Commission

Form 1002A
Rev. 2021

ORIGINAL
AMENDED (Reason)

Rule 165:10-3-25

COMPLETION REPORT

TYPE OF DRILLING OPERATION

☐ STRAIGHT HOLE ☐ DIRECTIONAL HOLE ☒ HORIZONTAL HOLE
☐ SERVICE WELL

If directional or horizontal, see reverse for bottom hole location.

COUNTY Kingfisher SEC 13 TWP 17N RGE 06W

LEASE NAME Lincoln Southeast Oswego Unit WELL NO. 45-3HO

SE 1/4 NE 1/4 SE 1/4 SE 1/4 FSL 911' E 1/4 198'

ELEVATION Ground 1053' Latitude 35.944058 Longitude -97.782865

OPERATOR NAME Hinkle Oil & Gas, Inc. OTC / OCC OPERATOR NO. 21639

ADDRESS 5600 N. May Avenue, Suite 29

CITY Oklahoma City STATE OK ZIP 73112

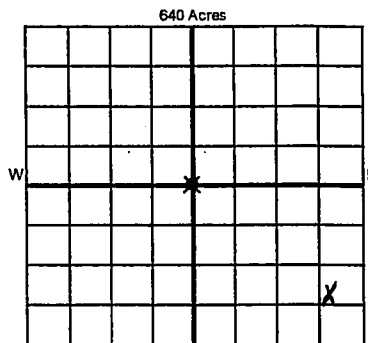
SPUD DATE 11/11/2021

DRLG FINISHED DATE 11/26/2021

DATE OF WELL COMPLETION 12/6/2021

1st PROD DATE 12/11/2021

RECOMP DATE



LOCATE WELL

COMPLETION TYPE

<input checked="" type="radio"/> SINGLE ZONE	
<input type="radio"/> MULTIPLE ZONE	
Application Date	
<input type="radio"/> COMMINGLED	
Application Date	
LOCATION EXCEPTION ORDER NO.	
MULTIUNIT ORDER NO.	
INCREASED DENSITY ORDER NO.	

CASING & CEMENT (Attach Form 1002C)

TYPE	SIZE	WEIGHT	GRADE	FEET	PSI	SAX	TOP OF CMT
CONDUCTOR	20"			90'			Surface
SURFACE	9 5/8"	36#	LTC	315'		125	Surface
INTERMEDIATE	7"	26#	P110	6725'		225	2755'
PRODUCTION							
LINER	4 1/2"	13.5#	P110	6447'-11,908'		460	6447'

PACKER @ BRAND & TYPE PLUG @ TYPE PLUG @ TYPE PLUG @ TYPE
PACKER @ BRAND & TYPE PLUG @ TYPE PLUG @ TYPE
COMPLETION & TEST DATA BY PRODUCING FORMATION 40403WVG

FORMATION	Oswego					Reported to FracFocus
SPACING & SPACING ORDER NUMBER	52793 (unit)					
CLASS: Oil, Gas, Dry, Inj, Disp, Comm Disp, Svc	Oil					
PERFORATED INTERVALS	6808'-11,733'					
ACID/VOLUME						
FRACTURE TREATMENT (Fluids/Prop Amounts)	196896 Gal. 15% HCl 58127 Bbl. Slick Water					

RECEIVED
JAN 31 2022

OKLAHOMA CORPORATION
COMMISSION

Min Gas Allowable (165:10-17-7)

Purchaser/Measurer



OR

First Sales Date

Oil Allowable (165:10-13-3)

INITIAL TEST DATA

INITIAL TEST DATE	12/11/2021				
OIL-BBL/DAY	452				
OIL-GRAVITY (API)	44.7				
GAS-MCF/DAY	347				
GAS-OIL RATIO CU FT/BBL	768				
WATER-BBL/DAY	2193				
PUMPING OR FLOWING	Pumping				
INITIAL SHUT-IN PRESSURE	N/A				
CHOKE SIZE	Open				
FLOW TUBING PRESSURE	N/A				

A record of the formations drilled through, and pertinent remarks are presented on the reverse. I declare that I have knowledge of the contents of this report and am authorized by my organization to make this report, which was prepared by me or under my supervision and direction, with the data and facts stated herein to be true, correct, and complete to the best of my knowledge and belief.

B. Hinkle
SIGNATURE

Bruce A. Hinkle
NAME (PRINT OR TYPE)

1/27/2022 405-848-0924
DATE PHONE NUMBER

5600 N. May Avenue, Suite 295 Oklahoma City OK 73112
ADDRESS CITY STATE ZIP

Laurahinkle@hoagi.com
EMAIL ADDRESS

PLEASE TYPE OR USE BLACK INK ONLY
FORMATION RECORD

Give formation names and tops, if available, or descriptions and thickness of formations drilled through. Show intervals cored or drillstem tested.

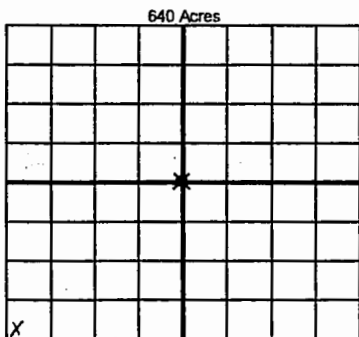
NAMES OF FORMATIONS	TOP
Oswego	TVD 6216'

LEASE NAME Lincoln Southeast Oswego Unit WELL NO. 45-3HO

FOR COMMISSION USE ONLY	
ITD on file <input type="checkbox"/> YES <input type="checkbox"/> NO	
APPROVED	DISAPPROVED
2) Reject Codes	

Were open hole logs run?	<input type="radio"/> yes <input checked="" type="radio"/> no
Date Last log was run	
Was CO ₂ encountered?	<input type="radio"/> yes <input checked="" type="radio"/> no at what depths?
Was H ₂ S encountered?	<input type="radio"/> yes <input checked="" type="radio"/> no at what depths?
Were unusual drilling circumstances encountered?	<input type="radio"/> yes <input checked="" type="radio"/> no
If yes, briefly explain below	

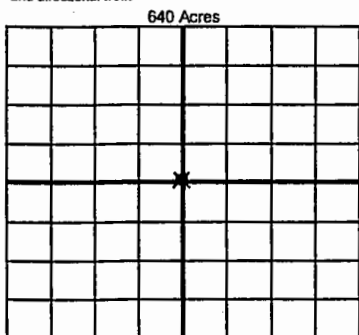
Other remarks:



If more than three drainholes are proposed, attach a separate sheet indicating the necessary information.

Direction must be stated in degrees azimuth. Please note, the horizontal drainhole and its end point must be located within the boundaries of the lease or spacing unit.

Directional surveys are required for all drainholes and directional wells



BOTTOM HOLE LOCATION FOR DIRECTIONAL HOLE

SEC	TWP	RGE	COUNTY
1/4	1/4	1/4	1/4
Measured Total Depth		True Vertical Depth	Feet From 1/4 Sec Lines
			BHL From Lease, Unit, or Property Line:

BOTTOM HOLE LOCATION FOR HORIZONTAL HOLE: (LATERALS)

LATERAL #1			
SEC	TWP	RGE	COUNTY
19	17N	05W	Kingfisher
SW 1/4	SW 1/4	SW 1/4	SW 1/4
Depth of Deviation		Radius of Turn	Direction
5674'		1238'	181 South
Measured Total Depth		True Vertical Depth	BHL From Lease, Unit, or Property Line:
11,910'		6435'	1'

LATERAL #2

SEC	TWP	RGE	COUNTY
1/4	1/4	1/4	1/4
Depth of Deviation		Radius of Turn	Direction
Measured Total Depth		True Vertical Depth	BHL From Lease, Unit, or Property Line:

LATERAL #3

SEC	TWP	RGE	COUNTY
1/4	1/4	1/4	1/4
Depth of Deviation		Radius of Turn	Direction
Measured Total Depth		True Vertical Depth	BHL From Lease, Unit, or Property Line: