

Oklahoma Corporation Commission
Oil & Gas Conservation Division
Post Office Box 52000
Oklahoma City, Oklahoma 73152-2000
Rule 165: 10-3-25

Form 1002A

API No.: 35073267970000

Completion Report

Spud Date: December 15, 2021

OTC Prod. Unit No.: 037-227559-0-0424

Drilling Finished Date: December 30, 2021

1st Prod Date: January 08, 2022

Completion Date: January 03, 2022

Drill Type: HORIZONTAL HOLE

Well Name: LINCOLN SOUTHEAST OSWEGO UNIT 37-3HO

Purchaser/Measurer:

Location: KINGFISHER 17 17N 5W
NE SW SW SE
354 FSL 2277 FEL of 1/4 SEC
Latitude: 35.942307 Longitude: -97.754772
Derrick Elevation: 0 Ground Elevation: 1084

First Sales Date:

Operator: HINKLE OIL & GAS INC 21639

5600 N MAY AVE STE 295
OKLAHOMA CITY, OK 73112-4275

Completion Type	
X	Single Zone
	Multiple Zone
	Commingle

Location Exception	
Order No	
There are no Location Exception records to display.	

Increased Density	
Order No	
There are no Increased Density records to display.	

Casing and Cement							
Type	Size	Weight	Grade	Feet	PSI	SAX	Top of CMT
CONDUCTOR	20			90			SURFACE
SURFACE	9 5/8	36	LTC	328		125	SURFACE
PRODUCTION	7	26	P-110	6690		225	4092

Liner								
Type	Size	Weight	Grade	Length	PSI	SAX	Top Depth	Bottom Depth
LINER	4 1/2	15.1	P-110	5304	0	460	6559	11863

Total Depth: 11866

Packer	
Depth	Brand & Type
There are no Packer records to display.	

Plug	
Depth	Plug Type
There are no Plug records to display.	

Initial Test Data

Test Date	Formation	Oil BBL/Day	Oil-Gravity (API)	Gas MCF/Day	Gas-Oil Ratio Cu FT/BBL	Water BBL/Day	Pumpin or Flowing	Initial Shut-In Pressure	Choke Size	Flow Tubing Pressure
Jan 13, 2022	OSWEGO	514	44.8	442	860	2065	PUMPING		OPEN	

Completion and Test Data by Producing Formation

Formation Name: OSWEGO

Code: 404OSWG

Class: OIL

Spacing Orders

Order No	Unit Size
52793	UNIT

Perforated Intervals

From	To
6850	11770

Acid Volumes

197,064 GALLONS 15% HCL, 57,650 BARRELS SLICK WATER

Fracture Treatments

There are no Fracture Treatments records to display.

Formation	Top
OSWEGO	6226

Were open hole logs run? No
Date last log run:

Were unusual drilling circumstances encountered? No
Explanation:

Other Remarks
There are no Other Remarks.

Lateral Holes
Sec: 17 TWP: 17N RGE: 5W County: KINGFISHER N2 NE NE NW 1 FNL 2310 FWL of 1/4 SEC Depth of Deviation: 5748 Radius of Turn: 1226 Direction: 2 Total Length: 4840 Measured Total Depth: 11866 True Vertical Depth: 6350 End Pt. Location From Release, Unit or Property Line: 1

FOR COMMISSION USE ONLY
Status: Accepted
1148185

API NO. 35-073-26797
OTC PROD. UNIT NO. 037-227559
-0-0474

Oil and Gas Conservation Division
P.O. Box 52000
Oklahoma City, OK 73152-2000
405-521-2331
OCCCentralProcessing@OCC.OK.GOV



OKLAHOMA
Corporation
Commission

Form 1002A
Rev. 2021

ORIGINAL
AMENDED (Reason)

Rule 165:10-3-25

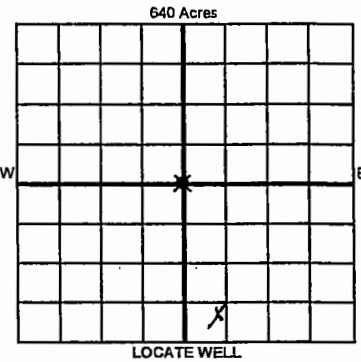
COMPLETION REPORT

TYPE OF DRILLING OPERATION

☐ STRAIGHT HOLE ☐ DIRECTIONAL HOLE ☒ HORIZONTAL HOLE
☐ SERVICE WELL

If directional or horizontal, see reverse for bottom hole location.

COUNTY	Kingfisher	SEC	17	TWP	17N	RGE	05W
LEASE NAME	Lincoln Southeast Oswego Unit			WELL NO.	37-3HO		
NE 1/4 SW 1/4 SW 1/4 SE 1/4	FBL	354'	FEL	2277'	DATE OF WELL COMPLETION	1/3/2022	
ELEVATION Derrick FL	Ground	1084'	Latitude	35.942307	1st PROD DATE	1/8/2022	
RECOMP DATE							
OPERATOR NAME	Hinkle Oil & Gas, Inc.			OTC / OCC OPERATOR NO.	21639		
ADDRESS	5600 N. May Avenue, Suite 295						
CITY	Oklahoma City	STATE	OK	ZIP	73112		



COMPLETION TYPE

<input checked="" type="radio"/> SINGLE ZONE	
<input type="radio"/> MULTIPLE ZONE	
Application Date	
<input type="radio"/> COMMINGLED	
Application Date	
LOCATION EXCEPTION ORDER NO.	
MULTIUNIT ORDER NO.	
INCREASED DENSITY ORDER NO.	

CASING & CEMENT (Attach Form 1002C)

TYPE	SIZE	WEIGHT	GRADE	FEET	PSI	SAX	TOP OF CMT
CONDUCTOR	20"			90'			Surface
SURFACE	9 5/8"	36#	LTC	328'		125	Surface
INTERMEDIATE	7"	26#	P110	6690'		225	4092'
PRODUCTION							
LINER	4 1/2"	15.1#	P110	6559'-11,863'		460	6559'

PACKER @ _____ BRAND & TYPE _____ PLUG @ _____ TYPE _____ PLUG @ _____ TYPE _____ TOTAL DEPTH 11,866'

COMPLETION & TEST DATA BY PRODUCING FORMATION

FORMATION	Oswego					No Frac
SPACING & SPACING ORDER NUMBER	52793 (unit)					
CLASS: Oil, Gas, Dry, Inj, Disp, Comm Disp, Svc	Oil					
PERFORATED INTERVALS	6850'-11,770'					
ACID/VOLUME						
FRACTURE TREATMENT (Fluids/Prop Amounts)	197064 Gal. 15% HCl 57650 Bbl. Slick Wtr					

RECEIVED

JAN 31 2022

OKLAHOMA CORPORATION
COMMISSION

Min Gas Allowable (165:10-17-7)

OR

Oil Allowable (165:10-13-3)

Purchaser/Measurer

First Sales Date

INITIAL TEST DATA

INITIAL TEST DATE	1/13/2022					
OIL-BBL/DAY	514					
OIL-GRAVITY (API)	44.8					
GAS-MCF/DAY	442					
GAS-OIL RATIO CU FT/BBL	860					
WATER-BBL/DAY	2065					
PUMPING OR FLOWING	Pumping					
INITIAL SHUT-IN PRESSURE	N/A					
CHOKE SIZE	Open					
FLOW TUBING PRESSURE	N/A					

A record of the formations drilled through, and pertinent remarks are presented on the reverse. I declare that I have knowledge of the contents of this report and am authorized by my organization to make this report, which was prepared by me or under my supervision and direction, with the data and facts stated herein to be true, correct, and complete to the best of my knowledge and belief.

B. Hinkle

SIGNATURE

Bruce A. Hinkle

NAME (PRINT OR TYPE)

1/27/2022

DATE

405-848-0924

PHONE NUMBER

5600 N. May Avenue, Suite 295

Oklahoma City

OK

73112

ADDRESS

CITY

STATE

ZIP

Laurahinkle@hoagi.com

EMAIL ADDRESS

PLEASE TYPE OR USE BLACK INK ONLY

FORMATION RECORD

Give formation names and tops, if available, or descriptions and thickness of formations drilled through. Show intervals cored or drillstem tested.

NAMES OF FORMATIONS	TOP
Oswego	TVD 6226'

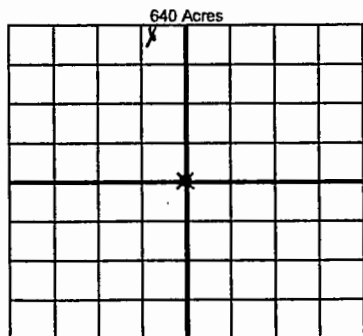
LEASE NAME Lincoln Southeast Oswego Unit

WELL NO. 37-3HO

FOR COMMISSION USE ONLY	
ITD on file <input type="checkbox"/> YES <input type="checkbox"/> NO	
APPROVED _____	DISAPPROVED _____
2) Reject Codes	

Were open hole logs run?	<input type="radio"/> yes <input checked="" type="radio"/> no
Date Last log was run	_____
Was CO ₂ encountered?	<input type="radio"/> yes <input checked="" type="radio"/> no at what depths? _____
Was H ₂ S encountered?	<input type="radio"/> yes <input checked="" type="radio"/> no at what depths? _____
Were unusual drilling circumstances encountered?	<input type="radio"/> yes <input checked="" type="radio"/> no
If yes, briefly explain below	

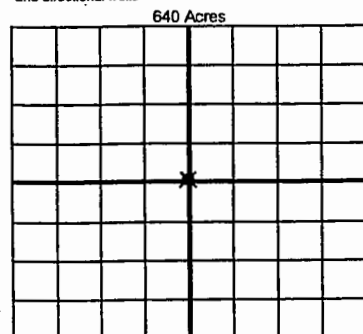
Other remarks: _____



If more than three drainholes are proposed, attach a separate sheet indicating the necessary information.

Direction must be stated in degrees azimuth. Please note, the horizontal drainhole and its end point must be located within the boundaries of the lease or spacing unit.

Directional surveys are required for all drainholes and directional wells



BOTTOM HOLE LOCATION FOR DIRECTIONAL HOLE

SEC	TWP	RGE	COUNTY
17	17N	05W	Kingfisher
1/4	1/4	1/4	1/4
Measured Total Depth		True Vertical Depth	Feet From 1/4 Sec Lines
11,866'		6350'	BHL From Lease, Unit, or Property Line: 1'

BOTTOM HOLE LOCATION FOR HORIZONTAL HOLE: (LATERALS)

LATERAL #1			
SEC	TWP	RGE	COUNTY
17	17N	05W	Kingfisher
N2	NE	NE	NW
1/4	1/4	1/4	1/4
Depth of Deviation 5748'		Radius of Turn 1226'	Direction 2 North
Measured Total Depth 11,866'		True Vertical Depth 6350'	Total Length 4840'
			BHL From Lease, Unit, or Property Line: 1'

LATERAL #2			
SEC	TWP	RGE	COUNTY
17	17N	05W	Kingfisher
1/4	1/4	1/4	1/4
Depth of Deviation		Radius of Turn	Direction
Measured Total Depth		True Vertical Depth	Total Length
			BHL From Lease, Unit, or Property Line:

LATERAL #3			
SEC	TWP	RGE	COUNTY
17	17N	05W	Kingfisher
1/4	1/4	1/4	1/4
Depth of Deviation		Radius of Turn	Direction
Measured Total Depth		True Vertical Depth	Total Length
			BHL From Lease, Unit, or Property Line: