

Oklahoma Corporation Commission  
Oil & Gas Conservation Division  
Post Office Box 52000  
Oklahoma City, Oklahoma 73152-2000  
Rule 165: 10-3-25

Form 1002A

API No.: 35073267920000

**Completion Report**

Spud Date: October 19, 2021

OTC Prod. Unit No.: 073-227563-0-0424

Drilling Finished Date: October 29, 2021

1st Prod Date: November 14, 2021

Completion Date: November 08, 2021

**Drill Type:** HORIZONTAL HOLE

Min Gas Allowable: Yes

Well Name: LINCOLN NORTH UNIT 51-4HO

Purchaser/Measurer:

Location: KINGFISHER 33 18N 5W  
SE SW SW SW  
256 FSL 344 FWL of 1/4 SEC  
Latitude: 35.986323 Longitude: -97.745545  
Derrick Elevation: 0 Ground Elevation: 1128

First Sales Date:

Operator: HINKLE OIL & GAS INC 21639

5600 N MAY AVE STE 295  
OKLAHOMA CITY, OK 73112-4275

Completion Type		Location Exception		Increased Density	
X	Single Zone	Order No		Order No	
	Multiple Zone	There are no Location Exception records to display.		There are no Increased Density records to display.	
	Commingled				

Casing and Cement							
Type	Size	Weight	Grade	Feet	PSI	SAX	Top of CMT
CONDUCTOR	20			80			SURFACE
SURFACE	9 5/8	36	LTC	307		125	SURFACE
PRODUCTION	7	29	P-110	6723		230	4238

Liner								
Type	Size	Weight	Grade	Length	PSI	SAX	Top Depth	Bottom Depth
LINER	4 1/2	13.5	P-110	5320	0	450	6486	11806

**Total Depth: 11806**

Packer	
Depth	Brand & Type
There are no Packer records to display.	

Plug	
Depth	Plug Type
There are no Plug records to display.	

Initial Test Data
-------------------

Test Date	Formation	Oil BBL/Day	Oil-Gravity (API)	Gas MCF/Day	Gas-Oil Ratio Cu FT/BBL	Water BBL/Day	Pumpin or Flowing	Initial Shut-In Pressure	Choke Size	Flow Tubing Pressure
Nov 22, 2021	OSWEGO	364	44.9	359	986	1599	PUMPING		OPEN	

#### Completion and Test Data by Producing Formation

Formation Name: OSWEGO

Code: 404OSWG

Class: OIL

#### Spacing Orders

Order No	Unit Size
119269	UNIT

#### Perforated Intervals

From	To
6750	11625

#### Acid Volumes

195,216 GALLONS 15% HCL, 58,055 BARRELS SLICK WATER

#### Fracture Treatments

There are no Fracture Treatments records to display.

Formation	Top
OSWEGO	6142

Were open hole logs run? No

Date last log run:

Were unusual drilling circumstances encountered? No

Explanation:

#### Other Remarks

There are no Other Remarks.

#### Lateral Holes

Sec: 32 TWP: 18N RGE: 5W County: KINGFISHER

NE NE NE NE

1 FNL 275 FEL of 1/4 SEC

Depth of Deviation: 5636 Radius of Turn: 1285 Direction: 360 Total Length: 4885

Measured Total Depth: 11806 True Vertical Depth: 6253 End Pt. Location From Release, Unit or Property Line: 1

#### FOR COMMISSION USE ONLY

Status: Accepted

1148186

API NO. 35-073-26792  
OTC PROD UNIT NO. 073-227563  
-0-0424

Oil and Gas Conservation Division  
P.O. Box 52000  
Oklahoma City, OK 73152-2000  
405-521-2331  
OCCCentralProcessing@OCC.OK.GOV



OKLAHOMA  
Corporation  
Commission

Form 1002A  
Rev. 2021

☒ ORIGINAL  
☐ AMENDED (Reason)

Rule 165:10-3-25

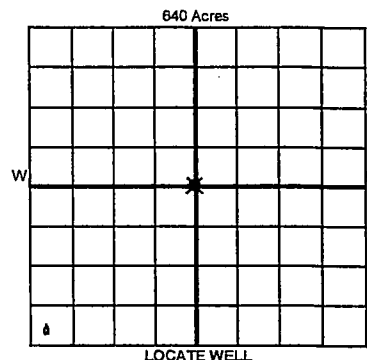
COMPLETION REPORT

TYPE OF DRILLING OPERATION

☐ STRAIGHT HOLE ☐ DIRECTIONAL HOLE ☒ HORIZONTAL HOLE  
☐ SERVICE WELL

If directional or horizontal, see reverse for bottom hole location.

COUNTY	Kingfisher	SEC	33	TWP	18N	RGE	05W	SPUD DATE	10/20/2021		
LEASE NAME	Lincoln North Unit			WELL NO.	51-4HO			DRLG FINISHED DATE	10/29/2021		
SE 1/4 SW 1/4 SW 1/4 SW 1/4	FSL	256'	FWL	344'	DATE OF WELL COMPLETION	11/08/2021			1st PROD DATE	11/14/2021	
ELEVATION Derrick FL	Ground	1128'	Latitude	35.986323		Longitude	-97.745545			RECOMP DATE	
OPERATOR NAME	Hinkle Oil & Gas, Inc.					OTC / OCC OPERATOR NO.	21639				
ADDRESS	5600 N. May Avenue, Suite 295										
CITY	Oklahoma City	STATE	OK	ZIP	73112						



COMPLETION TYPE

<input checked="" type="radio"/> SINGLE ZONE	
<input type="radio"/> MULTIPLE ZONE	Application Date
<input type="radio"/> COMMINGLED	Application Date
LOCATION EXCEPTION ORDER NO.	
MULTIUNIT ORDER NO.	
INCREASED DENSITY ORDER NO.	

CASING & CEMENT (Attach Form 1002C)

TYPE	SIZE	WEIGHT	GRADE	FEET	PSI	SAX	TOP OF CMT
CONDUCTOR	20"			80'		125	Surface
SURFACE	9 5/8	36#	LTC	307'		135	Surface
INTERMEDIATE							
PRODUCTION	7"	29#	P110	6723'		230	4238'
LINER	4 1/2"	13.5#	P110	6486'-11,806'		450	6486'

PACKER @ \_\_\_\_\_ BRAND & TYPE \_\_\_\_\_ PLUG @ \_\_\_\_\_ TYPE \_\_\_\_\_ PLUG @ \_\_\_\_\_ TYPE \_\_\_\_\_ TOTAL DEPTH 11,806'

COMPLETION & TEST DATA BY PRODUCING FORMATION

FORMATION	Oswego								
SPACING & SPACING ORDER NUMBER	119269 (unit)								
CLASS: Oil, Gas, Dry, Inj, Disp, Comm Disp, Svc	Oil	<input checked="" type="checkbox"/>							
PERFORATED INTERVALS	6750'-11625'								
ACID/VOLUME									
FRACTURE TREATMENT (Fluids/Prop Amounts)	195216 Gal. 15% HCL 58055 Bbl. Slick Wtr								

RECEIVED  
DEC 20 2021

OKLAHOMA CORPORATION  
COMMISSION

Reported to Frac Focus

Min Gas Allowable (165:10-17-7)

☒

OR

Oil Allowable (165:10-13-3)

Purchaser/Measurer

First Sales Date

INITIAL TEST DATA

INITIAL TEST DATE	11/22/2021								
OIL-BBL/DAY	364								
OIL-GRAVITY (API)	44.9								
GAS-MCF/DAY	359								
GAS-OIL RATIO CU FT/BBL	986								
WATER-BBL/DAY	1599								
PUMPING OR FLOWING	Pumping								
INITIAL SHUT-IN PRESSURE	N/A								
CHOKE SIZE	Open								
FLOW TUBING PRESSURE	N/A								

A record of the formations drilled through, and pertinent remarks are presented on the reverse. I declare that I have knowledge of the contents of this report and am authorized by my organization to make this report, which was prepared by me or under my supervision and direction, with the data and facts stated herein to be true, correct, and complete to the best of my knowledge and belief.

*B. Hinkle*  
SIGNATURE  
5600 N. May Avenue, Suite 295  
ADDRESS  
Oklahoma City  
CITY  
73112  
STATE  
405-848-0924  
ZIP  
December 17, 2021  
DATE  
Laurahinkle@hoagi.com  
PHONE NUMBER  
EMAIL ADDRESS

PLEASE TYPE OR USE BLACK INK ONLY  
FORMATION RECORD

Give formation names and tops, if available, or descriptions and thickness of formations drilled through. Show intervals cored or drillstem tested.

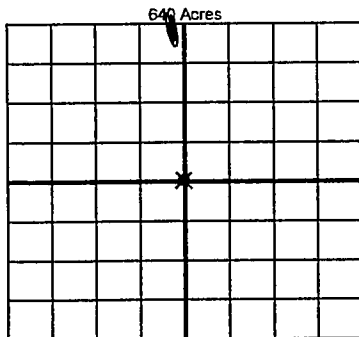
NAMES OF FORMATIONS	TOP
Oswego TVD	6142'

LEASE NAME Lincoln North Unit WELL NO. 51-4HO

FOR COMMISSION USE ONLY	
ITD on file <input type="checkbox"/> YES <input type="checkbox"/> NO	
APPROVED _____	DISAPPROVED _____
2) Reject Codes	

Were open hole logs run?	<input type="radio"/> yes <input checked="" type="radio"/> no
Date Last log was run	_____
Was CO <sub>2</sub> encountered?	<input type="radio"/> yes <input checked="" type="radio"/> no at what depths? _____
Was H <sub>2</sub> S encountered?	<input type="radio"/> yes <input checked="" type="radio"/> no at what depths? _____
Were unusual drilling circumstances encountered?	<input type="radio"/> yes <input checked="" type="radio"/> no
If yes, briefly explain below	

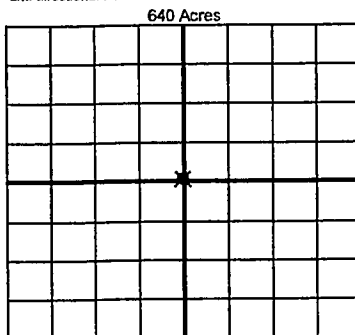
Other remarks:



If more than three drainholes are proposed, attach a separate sheet indicating the necessary information.

Direction must be stated in degrees azimuth. Please note, the horizontal drainhole and its end point must be located within the boundaries of the lease or spacing unit.

Directional surveys are required for all drainholes and directional wells



BOTTOM HOLE LOCATION FOR DIRECTIONAL HOLE

SEC	TWP	RGE	COUNTY
1/4	1/4	1/4	1/4
Measured Total Depth		True Vertical Depth	BHL From Lease, Unit, or Property Line:

BOTTOM HOLE LOCATION FOR HORIZONTAL HOLE: (LATERALS)

LATERAL #1				Kingfisher			
SEC 32	TWP 18N	RGE 05W	COUNTY				
NE 1/4	NE 1/4	NE 1/4	NE 1/4	Feet From 1/4 Sec Lines	FNL 1'	FEL 275'	
Depth of Deviation 5636'		Radius of Turn 1285'		Direction 360 North	Total Length 4885'		
Measured Total Depth 11,806'		True Vertical Depth 6253'		BHL From Lease, Unit, or Property Line: 1'			

LATERAL #2			
SEC	TWP	RGE	COUNTY
1/4	1/4	1/4	1/4
Depth of Deviation		Radius of Turn	Direction
Measured Total Depth		True Vertical Depth	BHL From Lease, Unit, or Property Line:

LATERAL #3			
SEC	TWP	RGE	COUNTY
1/4	1/4	1/4	1/4
Depth of Deviation		Radius of Turn	Direction
Measured Total Depth		True Vertical Depth	BHL From Lease, Unit, or Property Line: